

GQ series of vandal resistant waterproof metal lights

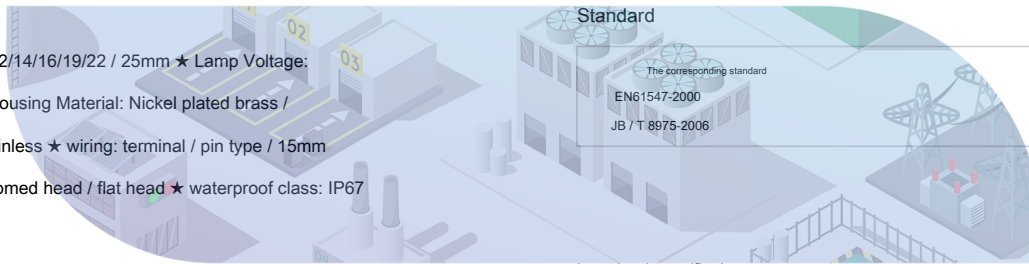
Model Description

GQ	★	■	—	D	/	◆	/	△	/	▲	/	◎
Serial Number	Mounting Hole Size	Head shape	Head shape	Wiring type	With light color	Illuminated part of the voltage	Housing material					
	6 Φ6mm 8 Φ8mm 10 Φ10mm 12 Φ12mm 14 Φ14mm 16 Φ16mm 19 Φ19mm 22 Φ22mm 25 Φ25mm	Spherical G 1 F T discoid discoid 2	A single light emitting point D	L terminal Y lead NOTE: No word represented terminal tabs	Red Yellow Green Y R G B O Orange Blue White W	AC / DC 6V AC / DC 12V AC / DC 24V AC / DC 110V AC / DC 220V	Nickel-plated brass housing N S A stainless steel-plated brass housing black					

Note : Please read the product specific instructions, select the appropriate code in the table according to the different symbols.

Features

- ★ dimensions: 6/8/10/12/14/16/19/22 / 25mm
- ★ Lamp Voltage: 6/12/24/110 / 220V
- ★ housing Material: Nickel plated brass / brass-plated black / stainless
- ★ wiring: terminal / pin type / 15mm leads
- ★ head shape: domed head / flat head
- ★ waterproof class: IP67



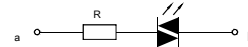
Lamp beads specifications

★ head shape and size can be customized installation

Performance features

Working temperature	- 25 °C ~ + 55 °C (non-frozen) have air flow around the light body 45 ~ 85% RH
Humidity	(non-condensing) ≥ 1000M
Insulation Resistance	resistance and solder maximum pres 500 V, 50 Hz AC, 1 min.
resistance, heat resistance impact	50 Hz, an amplitude of approximately 1.2mm
Vibration	Greater than 10g
	When 320 °C (iron or 30 watts) is not more than 2 seconds

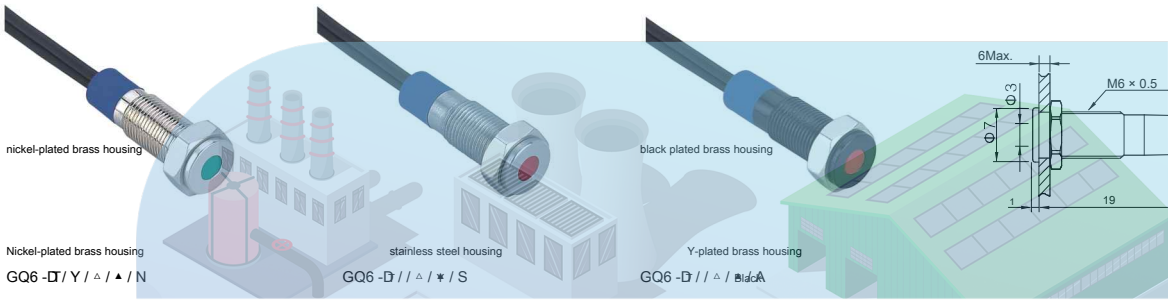
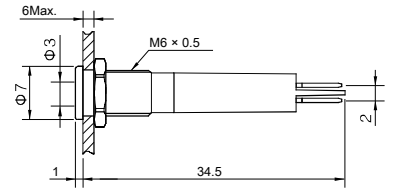
LED type	Bidirectional LED lamp (AC and DC common) R G Y O B W
luminescent color	
lifetime	AC / DC36V, AC / DC220V 40000 hours (reference)
Rated voltage	AC / DC6V, AC / DC12V, AC / DC110V, AC / DC24V.
Current Rating	6 ~ 36V about 15mA; 110 ~ 220V about 2mA
Step-down mode Built-in-resistance	
Lamp beads equivalent circuit	Using AC and DC common LED lamp, the positive and negative terminals without distinction; Lamp beads built-in protection without external resistance.



Note : To a unidirectional DC LED lamp can be customized; other voltage specifications can be customized.



steel housing
GQ6-D / ▲ / ▲ / S stainless



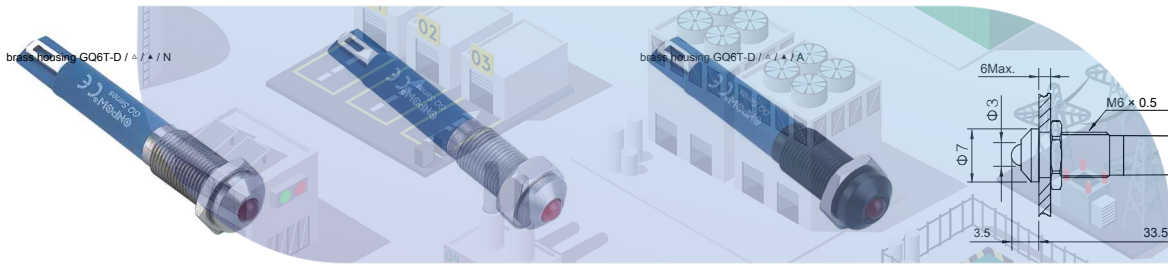
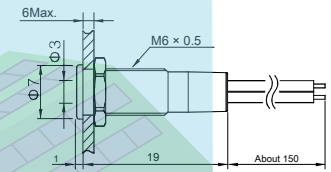
nickel-plated brass housing

Nickel-plated brass housing
GQ6-D / Y / ▲ / ▲ / N

stainless steel housing
GQ6-D / ▲ / ▲ / S

black plated brass housing

Y-plated brass housing
GQ6-D / Y / ▲ / ▲ / A



brass housing GQ6T-D / ▲ / ▲ / N

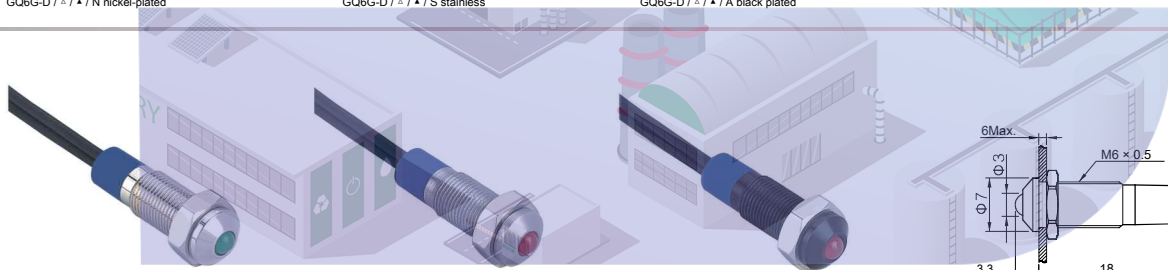
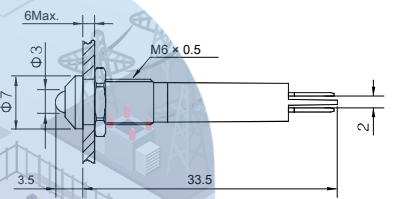
GQ6G-D / ▲ / ▲ / N nickel-plated

steel housing

GQ6G-D / ▲ / ▲ / S stainless

brass housing GQ6T-D / ▲ / ▲ / A

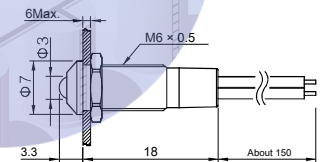
GQ6G-D / ▲ / ▲ / A black plated



nickel-plated brass housing
GQ6-D / Y / ▲ / ▲ / N

steel housing
GQ6-D / Y / ▲ / ▲ / S

housing black
GQ6-D / Y / ▲ / ▲ / A



Light Color (+): **R G Y O B W**

Voltage level (+): 6V, 12V, 24V, 110V, 220V:

Mounting hole size: Φ6mm

LED type: LED

Current Rating: 2mA ~ 20mA

: About Nm

0.1: ~ 6mm

Connection tab (2.8 × 0.5mm) / Cm length of wire

Solder heat resistance: When 320 °C (iron or 30 watts) is not more than 2 seconds

Nickel-plated brass housing material: Nickel-plated brass / stainless steel grades are stainless unlabeled 304)

The shade material: epoxy resin (customizable UV): thickness of

the base material PA

Protection class IP67, IK10

RoHS Customizable

GQ6 lights parameters



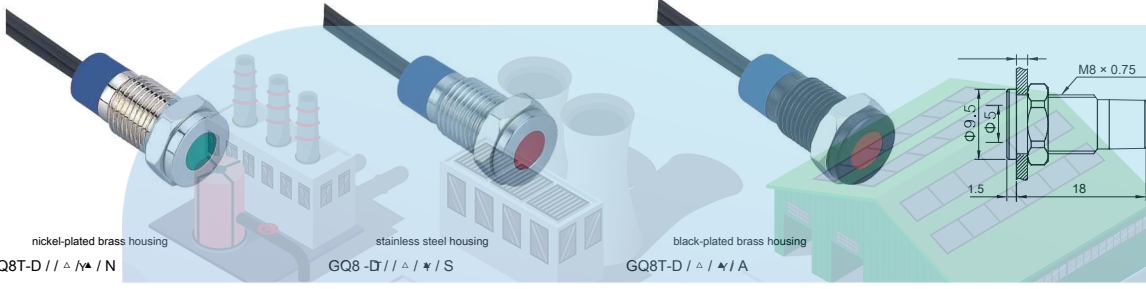
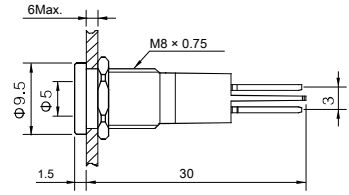
brass housing
GQ8T-D / Δ / ▲ / N nickel-plated



steel housing
GQ8 - D stainlessS



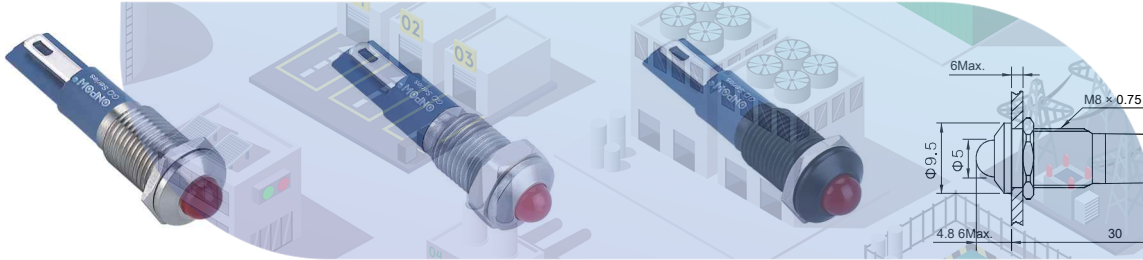
brass housing
GQ8T-D / Δ / ▲ / A black plated



nickel-plated brass housing
GQ8T-D // Δ / ▲ / N

stainless steel housing
GQ8 - D // Δ / ▲ / S

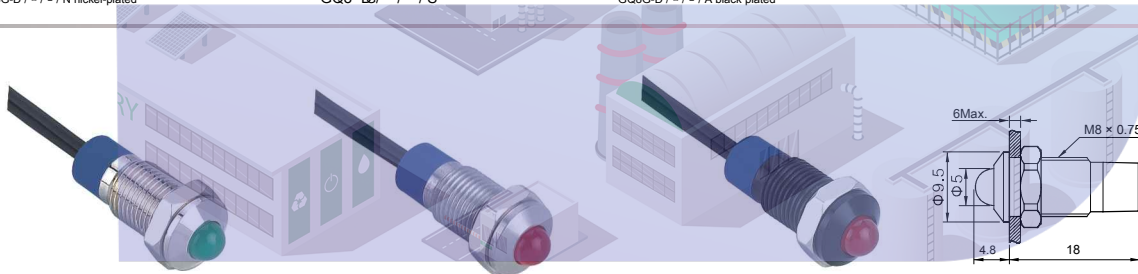
black-plated brass housing
GQ8T-D / Δ / ▲ / A



brass housing
GQ8G-D / Δ / ▲ / N nickel-plated

stainless steel housing
GQ8 - D // Δ / ▲ / S

brass housing
GQ8G-D / Δ / ▲ / A black plated



Nickel-plated brass housing
GQ8G-D // Δ / ▲ / N

Stainless steel housing
GQ8G-D // Δ / ▲ / S

Black-plated brass housing
GQ8G-D // Δ / ▲ / A

Light Color (Δ): **R G Y O B W**

Voltage level (▲): 6V, 12V, 24V, 110V, 220V.

Mounting hole size: Φ8mm

LED type: LED

Current Rating: 2mA ~ 20mA

: From about Nm

0.2:1 ~ 6mm

Connection tab (2.8 × 0.8mm) / Cm length of wire

Solder heat resistance: When 320 °C (iron or 30 watts) is not more than 2 seconds

Nickel-plated brass housing material / black plated brass / stainless steel (labeled grades of stainless steel 304)

The shade material epoxy resin (customizable UV): thickness of

the base material PA

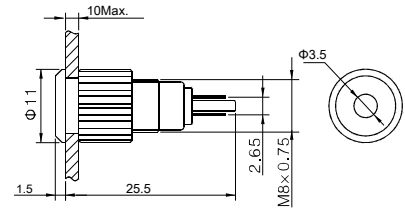
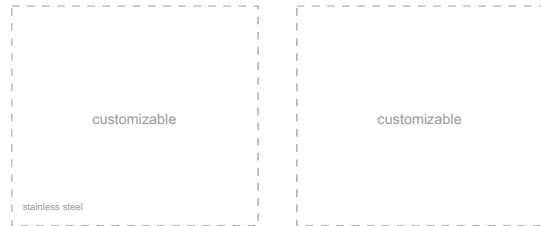
Protection class IP67, IK10

RoHS customizable

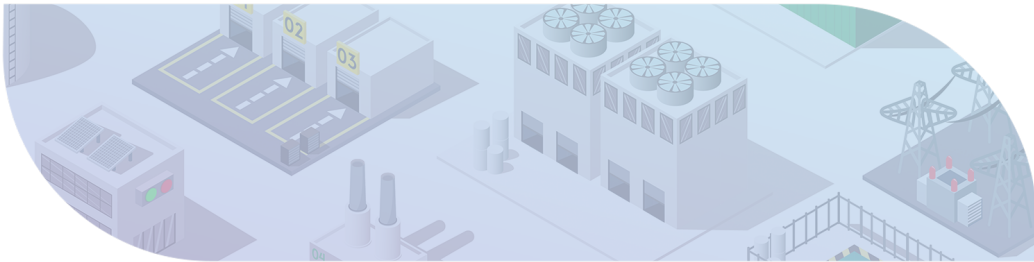
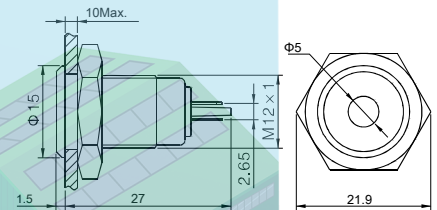
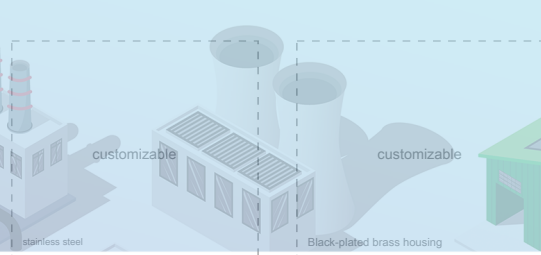
Q08 lights
parameters



Nickel-plated brass housing
G08F-D / A / * / N



Nickel-plated brass housing
GQ12F-D / A / * / N



Light Color (*): **R G Y O B W**

Voltage level (*): 6V, 12V, 24V, 36V

Mounting hole size: $\Phi 8, 12\text{mm LED}$

type: LED

Rated current: 2mA ~ 20mA nut

torque: about 0.3Nm panel thickness:

1 ~ 10mm

Tail configuration: the terminal tabs (1.8 × 0.4mm) Solder heat resistance:

When 320 °C (iron or 30 watts) is not more than 2 seconds

Case Material: Nickel plated brass

lampshade materials: polycarbonate

base material: PBT Protection Level:

IP67, IK10

RoHS customizable

GQ8, GQ12 lights

Related parameters



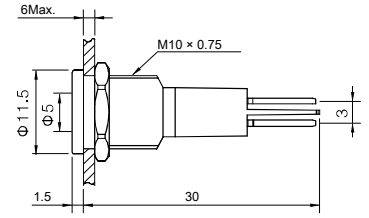
brass housing
GQ10T-D // Δ / ▲ / N nickel-plated



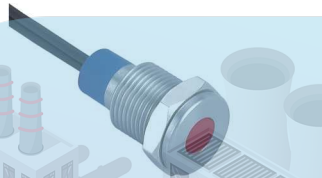
steel housing
GQ10T-D // Δ / ▲ / S stainless



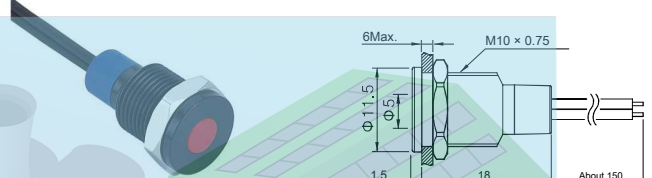
brass housing



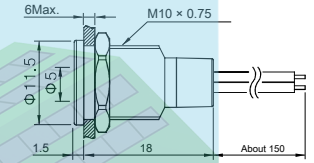
Nickel-plated brass housing
GQ10T-D // Δ / ▲ / N



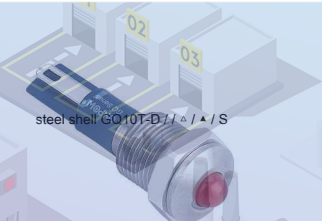
Stainless steel housing
Y



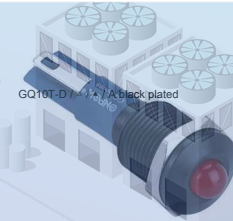
Black-plated brass housing
GQ10T-D // Δ / ▲ / A



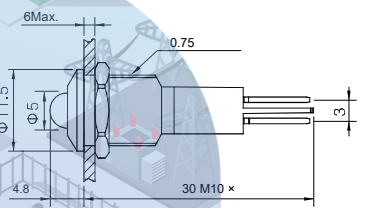
brass housing
GQ10G-D // Δ / ▲ / N nickel-plated



steel shell GQ10G-D // Δ / ▲ / S



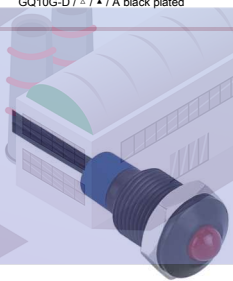
brass housing
GQ10G-D // Δ / ▲ / A black plated



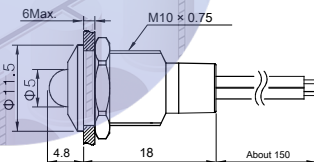
Nickel-plated brass housing
GQ10G-D // Δ / ▲ / N



Stainless steel housing
GQ10G-D // Δ / ▲ / S



Black-plated brass housing
GQ10G-D // Δ / ▲ / A



⊙ Light Color (Δ): **R G Y O B W**

⊙ Voltage level (▲): 6V, 12V, 24V, 110V, 220V:

⊙ Mounting Hole Size: Φ10mm

⊙ LED type: LED

⊙ Current Rating: 2mA ~ 20mA

⊙ Nut torque tail : From about Nm 1

⊙ configuration 0.3~ 6mm

⊙ panel thickness Connection tab (2.8 × 0.8mm) / Cm length of wire

⊙ Solder heat resistance: When 320 °C (iron or 30 watts) is not more than 2 seconds

⊙ Nickel-plated brass housing material / black plated brass / stainless steel (unlabeled grades of stainless steel 304)

⊙ The shade material: epoxy resin (customizable UV)::

⊙ the base material PA

⊙ Protection class IP67, IK10

⊙ **RoHS** Customizable

GQ10 lights
parameters



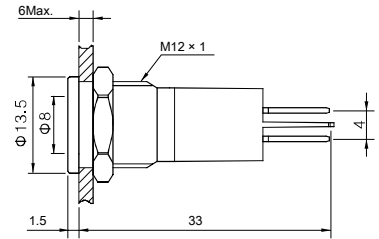
brass housing



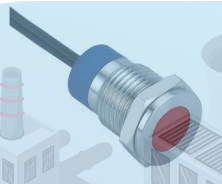
steel housing
GQ12T-D / Δ / ▲ / S stainless



brass housing
GQ12T-D / Δ / ▲ / A black plated



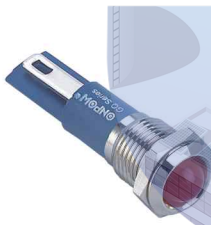
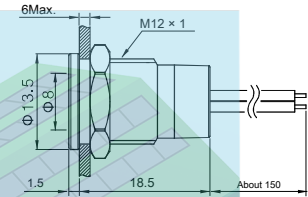
Nickel-plated brass housing
GQ12T-D / Δ / ▲ / N



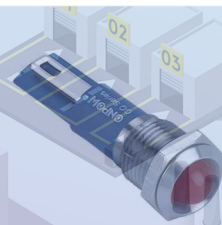
Stainless steel housing
GQ12T-D / Δ / ▲ / S



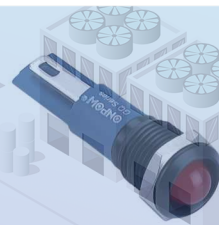
Black-plated brass housing
GQ12T-D / Δ / ▲ / A



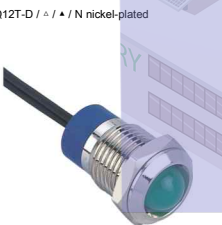
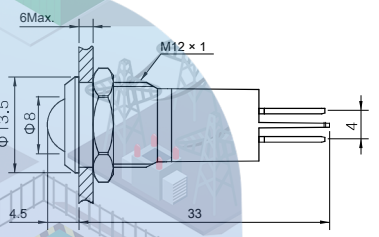
brass housing
GQ12G-D / Δ / ▲ / N nickel-plated



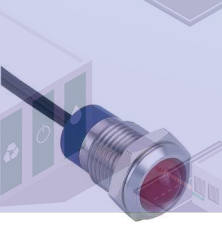
stainless steel housing
GQ12-D / Δ / ▲ / S



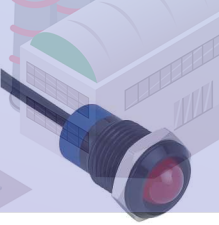
plated brass housing
GQ12-D / Δ / ▲ / A



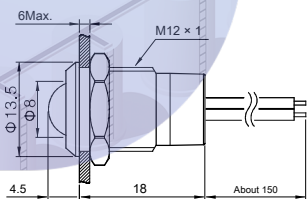
GQ12T-D / Δ / ▲ / N nickel-plated



steel housing
GQ12-D / Δ / ▲ / S



brass housing black
GQ12-D / Δ / ▲ / A



Light Color (-): **R G Y O B W**

Voltage level (▲): 6V, 12V, 24V, 110V, 220V:

Mounting Hole Size: Φ12mm LED

type: LED Rated current: 2mA ~

20mA

Nut torque tail : From about Nm 1

configuration : 0.3~ 6mm

panel thickness Connection tab (2.8 × 0.8mm) / Cm length of wire

Solder heat resistance: When 320 °C (iron or 30 watts) is not more than 2 seconds

Nickel-plated brass housing material / stainless steel / black-plated brass

The shade material epoxy resin (customizable UV):

the base material PA

Protection class IP67, IK10

RoHS Customizable

GQ12 lights
parameters



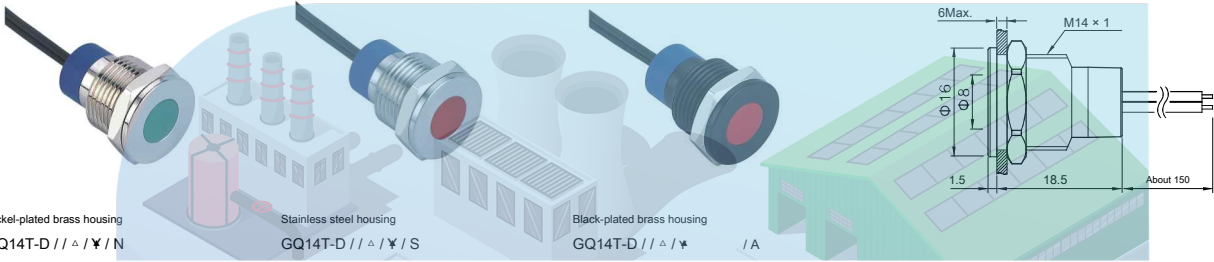
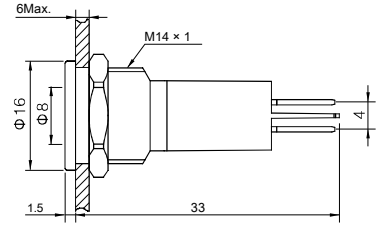
brass housing
GQ14T-D // Δ / ▲ / N nickel-plated



steel housing
GQ14T-D // Δ / ▲ / S stainless



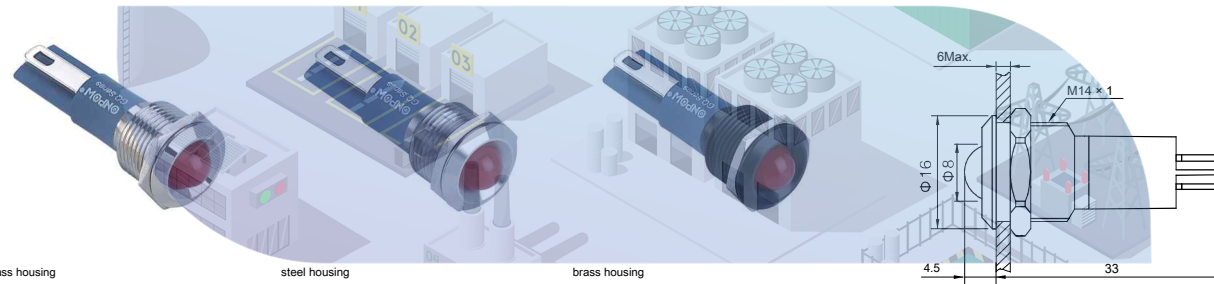
brass housing
GQ14T-D // Δ / ▲ / A black plated



Nickel-plated brass housing
GQ14-D // Δ / ▲ / N

Stainless steel housing
GQ14-D // Δ / ▲ / S

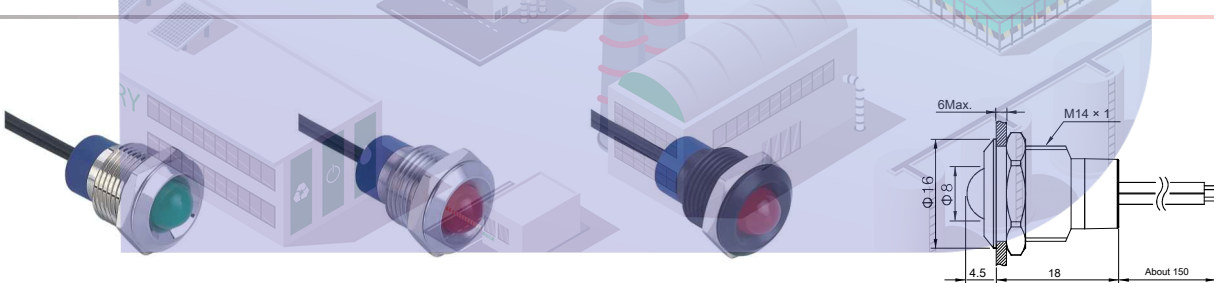
Black-plated brass housing
GQ14-D // Δ / ▲ / A



brass housing
GQ14G-D // Δ / ▲ / N nickel-plated

steel housing
GQ14G-D // Δ / ▲ / S stainless

brass housing
GQ14G-D // Δ / ▲ / A black plated



Nickel-plated brass housing
GQ14G-D // Δ / ▲ / N

Stainless steel housing
GQ14G-D // Δ / ▲ / S

Black-plated brass housing
GQ14G-D // Δ / ▲ / A

Light Color (-): **R G Y O B W**

Voltage level (+): 6V, 12V, 24V, 110V, 220V:

Mounting Hole Size: Φ14mm LED

type: LED Rated current: 2mA ~

20mA

Nut torque tail : About Nm 1

configuration 0.4: 6mm

panel thickness Connection tab (2.8 × 0.8mm) /Cm length of wire

Solder heat resistance: When 320 °C (iron or 30 watts) is not more than 2 seconds

Nickel-plated brass housing material / stainless steel / black-plated brass

The shade material epoxy resin (customizable UV):

the base material PA

Protection class IP67, IK10

RoHS Customizable

GQ14 lights parameters



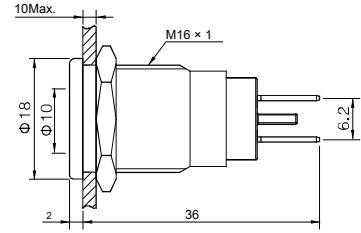
brass housing
GQ16T-D / Δ / ▲ / N nickel-plated



steel housing
GQ16T-D / Δ / ▲ / S stainless



brass housing
GQ16T-D / Δ / ▲ / A black plated



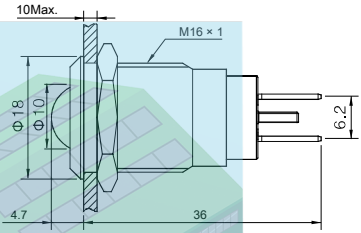
brass housing
GQ16G-D / Δ / ▲ / N nickel-plated



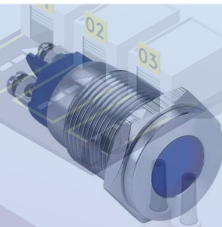
steel housing
GQ16G-D / Δ / ▲ / S stainless



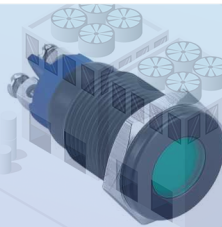
brass housing
GQ16G-D / Δ / ▲ / A black plated



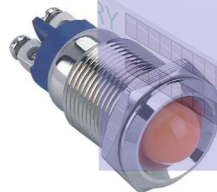
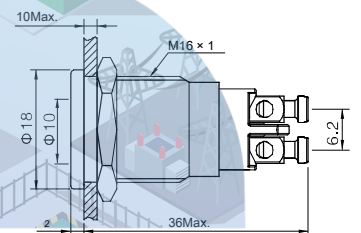
brass housing
GQ16T-D / L / Δ / ▲ / N nickel-plated



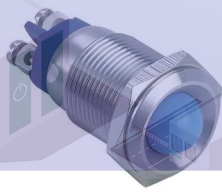
Stainless steel housing
GQ16T-D / Δ / ▲ / S



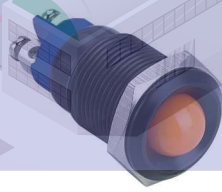
Black-plated brass housing
GQ16T-D / Δ / ▲ / A



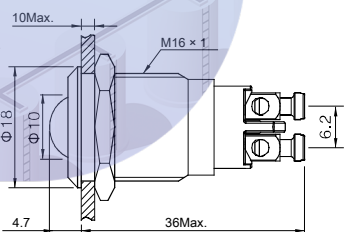
Nickel-plated brass housing
GQ16G-D / Δ / ▲ / L N



Stainless steel housing
GQ16G-D / Δ / ▲ / L S



Black-plated brass housing
GQ16G-D / Δ / ▲ / L A



⊙ Light Color (-): **R G Y O B W**

⊙ Voltage level (▲): 6V, 12V, 24V, 110V, 220V:

⊙ Mounting Hole Size: Φ16mm

⊙ LED type: LED

⊙ Current Rating: 2mA ~ 20mA

⊙ : About Nm 1

⊙ 0.6: 10mm

⊙ Connection tab (2.8 × 0.8mm) / terminal configuration

⊙ Solder heat resistance: When 320 °C (iron or 30 watts) is not more than 2 seconds nut torque of panel Thickness

⊙ Nickel-plated brass housing material / stainless steel / black-plated brass

⊙ Lampshade Material Polycarbonate (UV customizable) base

⊙ material PA

⊙ Protection class IP68, IK10

⊙ **RoHS** Customizable

GQ16 lights parameters



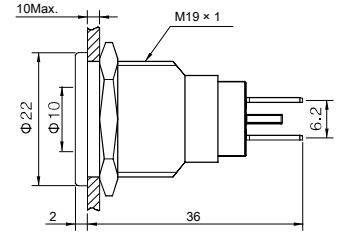
brass housing
GQ19T-D / Δ / ▲ / N nickel-plated



steel housing
GQ19T-D / Δ / ▲ / S stainless



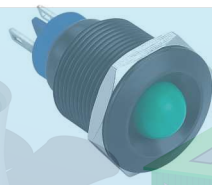
brass housing
GQ19T-D / Δ / ▲ / A black plated



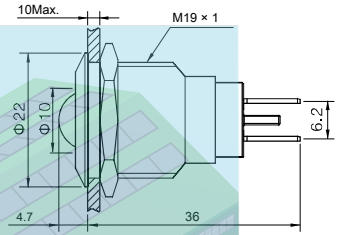
brass housing
GQ19G-D / Δ / ▲ / N nickel-plated



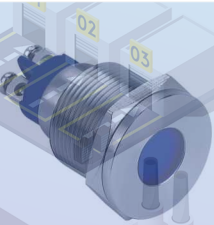
steel housing
GQ19G-D / Δ / ▲ / S stainless



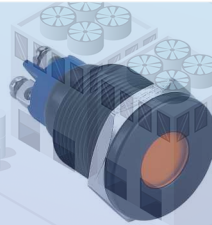
brass housing
GQ19G-D / Δ / ▲ / A black plated



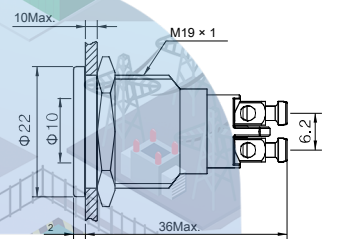
brass housing
GQ19T-D / L / Δ / ▲ / N nickel-plated



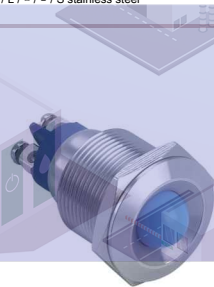
housing
GQ19T-D / L / Δ / ▲ / S stainless steel



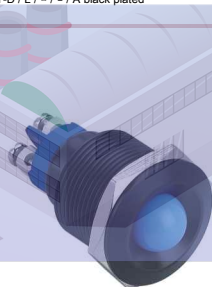
brass housing
GQ19T-D / L / Δ / ▲ / A black plated



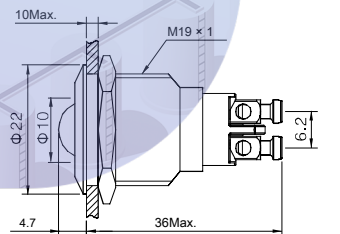
brass housing
GQ19G-D / L / Δ / ▲ / N nickel-plated



housing
GQ19G-D / L / Δ / ▲ / S stainless steel



brass housing
GQ19G-D / L / Δ / ▲ / A black plated



- ⊙ Light Color (-): **R G Y O B W**
- ⊙ Voltage level (+): 6V, 12V, 24V, 110V, 220V.
- ⊙ Mounting Hole Size: Φ19mm LED
- ⊙ type: LED Rated current: 2mA ~ 20mA
- ⊙ : About Nm 1
- ⊙ 0.8: 10mm
- ⊙ Connection tab (2.8 × 0.8mm) / terminal configuration
- ⊙ Solder heat resistance: When 320 °C (iron or 30 watts) is not more than 2 seconds nut torque
- ⊙ Thickness
- ⊙ Nickel-plated brass housing material / stainless steel / black-plated brass
- ⊙ Lampshade Material Polycarbonate (UV customizable) base
- ⊙ material PA
- ⊙ Protection class IP68, IK10
- ⊙ **RoHS** Customizable

GQ19 lights parameters



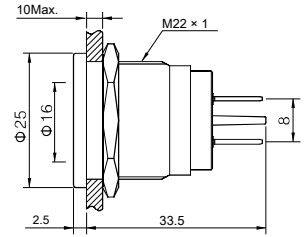
brass housing
GQ22T-D / Δ / ▲ / N nickel-plated



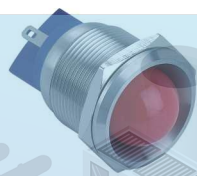
steel housing
GQ22T-D / Δ / ▲ / S stainless



brass housing
GQ22T-D / Δ / ▲ / A black plated



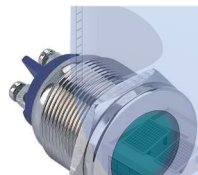
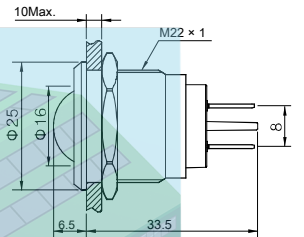
brass housing
GQ22G-D / Δ / ▲ / N nickel-plated



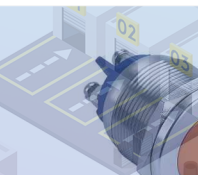
steel housing
GQ22G-D / Δ / ▲ / S stainless



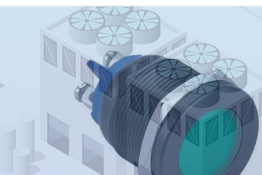
brass housing
GQ22G-D / Δ / ▲ / A black plated



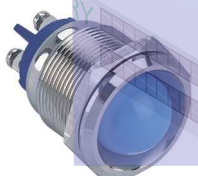
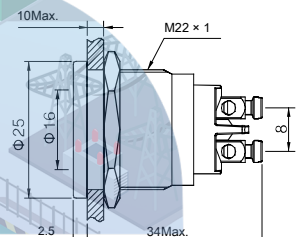
brass housing
GQ22T-D / L / Δ / ▲ / N nickel-plated



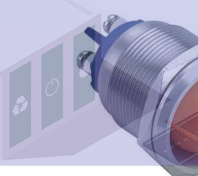
housing
GQ22T-D / L / Δ / ▲ / S stainless steel



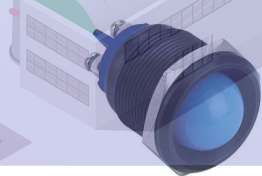
brass housing
GQ22T-D / L / Δ / ▲ / A black plated



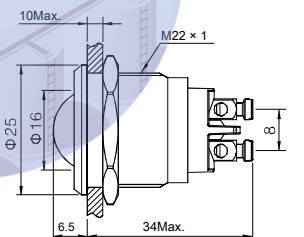
brass housing
GQ22G-D / L / Δ / ▲ / N nickel-plated



housing
GQ22G-D / L / Δ / ▲ / S stainless steel



brass housing
GQ22G-D / L / Δ / ▲ / A black plated



- Light Color (-): **R G Y O B W**
- Voltage level (+): 6V, 12V, 24V, 110V, 220V.
- Mounting Hole Size: Φ22mm LED
- type: LED Rated current: 2mA ~ 20mA
- : 1.0: Nm 1 ~ 10mm
- Connection tab (2.8 × 0.8mm) / terminal configuration
- Solder heat resistance: When 320 °C (iron or 30 watts) is not more than 2 seconds nut torque of panel
- Thickness
- Nickel-plated brass housing material / stainless steel / black-plated brass
- Lampshade Material Polycarbonate (UV customizable) base
- material PA
- Protection class IP68, IK10
- **RoHS** Customizable

GQ22 lights parameters



housing



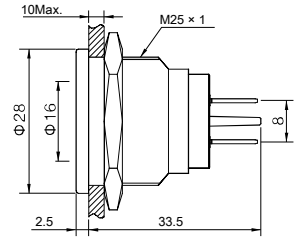
steel housing

GQ25T-D / Δ / ▲ / S stainless

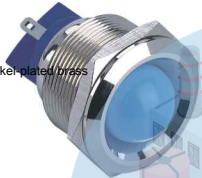


brass housing

GQ25T-D / Δ / ▲ / A black plated

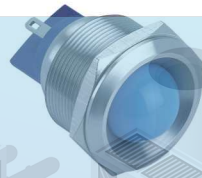


Δ / ▲ / N nickel-plated brass



Nickel-plated brass housing

GQ25G-D / Δ / ▲ / N GQ25T-D /



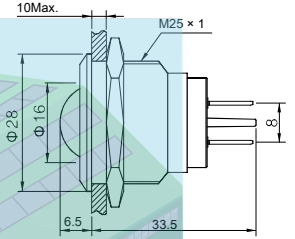
steel housing

GQ25G-D / Δ / ▲ / S stainless



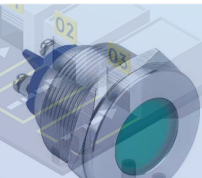
brass housing

GQ25G-D / Δ / ▲ / A black plated



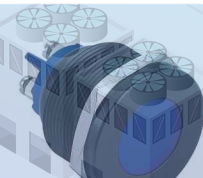
brass housing

GQ25T-D / L / Δ / ▲ / N nickel-plated



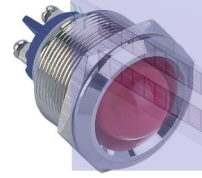
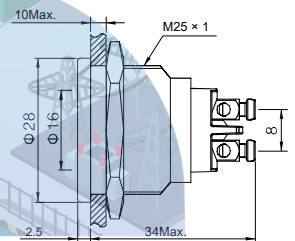
housing

GQ25T-D / L / Δ / ▲ / S stainless steel



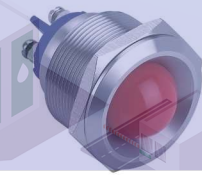
brass housing

GQ25T-D / L / Δ / ▲ / A black plated



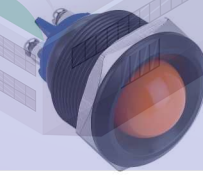
brass housing

GQ25G-D / L / Δ / ▲ / N nickel-plated



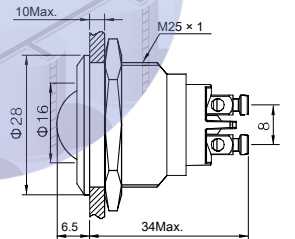
housing

GQ25G-D / L / Δ / ▲ / S stainless steel



brass housing

GQ25G-D / L / Δ / ▲ / A black plated



- Light Color (-): **R G Y O B W**
- Voltage level (+): 6V, 12V, 24V, 110V, 220V:
- Mounting Hole Size: Φ25mm LED
- type: LED Rated current: 2mA ~
- 20mA
- : 1.2:: Nm 1 ~
- 10mm
- Connection tab (2.8 × 0.8mm) / terminal configuration
- Solder heat resistance: When 320 °C (iron or 30 watts) is not more than 2 seconds
- nut torque
- of panel
- Thickness
- Nickel-plated brass housing material / stainless steel / black-plated brass
- Lampshade Material Polycarbonate (UV customizable) base
- material PA
- Protection class IP68, IK10
- **RoHS** Customizable

GQ25 lights parameters