

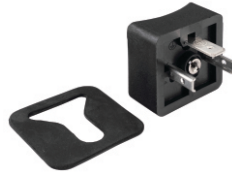
SOLENOID (DIN) CONNECTORS



ME-2/PC

CURVED PLUG

Rated Current	: 10A
Rated Voltage	: 250 V
Connector Type	: 2P+E Solenoid (DIN) connector style A
Mounting	: Screw mounting
Operating Temperature	: -40°C TO +120°C
Center Distance	: 18 mm
Reference Standard	: DIN-43650, ISO 4400, EN-175301-803
Compliance Marking	: CE, RoHS (On Request)
Approvals	: VDE (On Request)



ME-2/PF

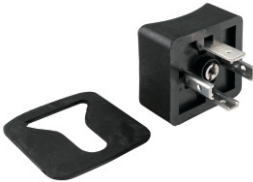
FLAT PLUG

Rated Current	: 10A
Rated Voltage	: 250 V
Connector Type	: 2P+E Solenoid (DIN) connector style A
Mounting	: Screw mounting
Operating Temperature	: -40°C TO +120°C
Center Distance	: 18 mm
Reference Standard	: DIN-43650, ISO 4400, EN-175301-803
Compliance Marking	: CE, RoHS (On Request)
Approvals	: VDE (On Request)



ME-3/PC

Rated Current	: 10A
Rated Voltage	: 250 V
Connector Type	: 3P+E Solenoid (DIN) connector style A
Mounting	: Screw mounting
Operating Temperature	: -40°C TO +120°C
Center Distance	: 18 mm
Reference Standard	: DIN-43650, ISO 4400, EN-175301-803
Compliance Marking	: CE, RoHS (On Request)
Approvals	: VDE (On Request)



ME-3/PF

Rated Current	: 10A
Rated Voltage	: 250 V
Connector Type	: 3P+E Solenoid (DIN) connector style A
Mounting	: Screw mounting
Operating Temperature	: -40°C TO +120°C
Center Distance	: 18 mm
Reference Standard	: DIN-43650, ISO 4400, EN-175301-803
Compliance Marking	: CE, RoHS (On Request)
Approvals	: VDE (On Request)





SOLENOID (DIN) CONNECTORS

MER-2/PF SERIES

Rated Current : 16A
 Rated Voltage : 250 V AC
 Connector Type : 2P+E Solenoid (DIN) connector style B
 Mounting : Screw mounting
 Operating Temperature : -40°C TO +120°C
 Center Distance : 11 mm
 Reference Standard : DIN-43650, ISO 4400, EN-175301-803
 Compliance Marking : CE, RoHS (On Request)
 Approvals : VDE (On Request)



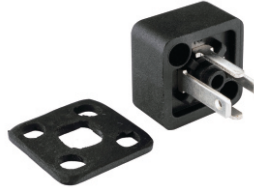
MEM-2/PF 8

Rated Current : 6A
 Rated Voltage : 250 V AC
 Connector Type : 2P+E Solenoid (DIN) connector style C
 Mounting : Screw mounting
 Operating Temperature : -40°C TO +120°C
 Center Distance : 8 mm
 Reference Standard : DIN-43650, ISO 4400, EN-175301-803
 Compliance Marking : CE, RoHS (On Request)
 Approvals : cULus (On Request)



MEM-3/PF 8

Rated Current : 6A
 Rated Voltage : 250 V AC
 Connector Type : 3P+E Solenoid (DIN) connector style C
 Mounting : Screw mounting
 Operating Temperature : -40°C TO +120°C
 Center Distance : 8 mm
 Reference Standard : DIN-43650, ISO 4400, EN-175301-803
 Compliance Marking : CE, RoHS (On Request)
 Approvals : cULus (On Request)



MEM-2/PF 9

Rated Current : 6A
 Rated Voltage : 250 V AC
 Connector Type : 2P+E Solenoid (DIN) connector style C
 Mounting : Screw mounting
 Operating Temperature : -40°C TO +120°C
 Center Distance : 9.4 mm
 Reference Standard : DIN-43650, ISO 4400, EN-175301-803
 Compliance Marking : CE, RoHS (On Request)
 Approvals : NA



MEM-3/PF 9

Rated Current : 6A
 Rated Voltage : 250 V AC
 Connector Type : 3P+E Solenoid (DIN) connector style C
 Mounting : Screw mounting
 Operating Temperature : -40°C TO +120°C
 Center Distance : 9.4 mm
 Reference Standard : DIN-43650, ISO 4400, EN-175301-803
 Compliance Marking : CE, RoHS (On Request)
 Approvals : NA



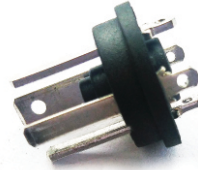


SOLENOID (DIN) CONNECTORS

MICRO (ROUND) PLUG

MEM-3/PR-8

Rated Current	: 6A
Rated Voltage	: 250 V AC
Connector Type	: 3P+E Solenoid (DIN) connector style C
Mounting	: Screw mounting
Operating Temperature	: -40°C TO +120°C
Center Distance	: 8mm
Reference Standard	: DIN-43650, ISO 4400, EN-175301-803
Compliance Marking	: CE, RoHS
Approvals	: cULus



PG-9



ME-209/S

Rated Current	: 10A
Rated Voltage	: 250 V
Connector Type	: 2P+E, Socket, Solenoid (DIN) connector style A, Non-illuminated
Mounting	: Screw mounting
Mounting screw size	: M3x30mm
Operating Temperature	: -40°C TO +120°C
Center Distance	: 18 mm
Reference Standard	: DIN-43650, ISO 4400, EN-175301-803
Compliance Marking	: CE, RoHS (On Request)
Approvals	: VDE (On Request)

PG-11

ME-211/S

Rated Current	: 10A
Rated Voltage	: 250 V
Connector Type	: 2P+E, Socket Solenoid (DIN) connector style A, Non-illuminated
Mounting	: Screw Mounting
Center Distance	: 18MM
Mounting Screw size	: M3x30mm
Operating Temperature	: -40°C TO +120°C
Reference Standard	: DIN-43650, ISO 4400, EN-175301-803
Compliance Marking	: CE, RoHS (On Request)
Approvals	: VDE (On Request)



ME-211/SL

Rated Current	: 10A
Rated Voltage	: 250 V
Connector Type	: 2P+E, Socket Solenoid (DIN) connector style A, illuminated
Mounting	: Screw size M3x30mm
Operating Temperature	: -40°C TO +120°C
Center Distance	: 18 mm
Reference Standard	: DIN-43650, ISO 4400, EN-175301-803
Compliance Marking	: CE, RoHS (On Request)
Approvals	: VDE (On Request)





SOLENOID (DIN) CONNECTORS

PG-9

ME-309/S

Rated Current	: 10A
Rated Voltage	: 250 V
Connector Type	: 3P+E, Socket Solenoid (DIN) connector style A, Non-illuminated
Mounting	: Screw mounting
Center Distance	: 18 mm
Mounting Screw size	: M3x30mm
Operating Temperature	: -40°C TO +120°C
Reference Standard	: DIN-43650, ISO 4400, EN-175301-803
Compliance Marking	: CE, RoHS (On Request)
Approvals	: VDE (On Request)



ME-309/SL

Rated Current	: 10A
Rated Voltage	: 250 V
Connector Type	: 3P+E, Socket Solenoid (DIN) connector style A,illuminated
Mounting	: Screw mounting
Center Distance	: 18 mm
Mounting Screw size	: M3x30mm
Operating Temperature	: -40°C TO +120°C
Reference Standard	: DIN-43650, ISO 4400, EN-175301-803
Compliance Marking	: CE, RoHS (On Request)
Approvals	: VDE (On Request)

PG-11

ME-311/S

Rated Current	: 10A
Rated Voltage	: 250 V
Connector Type	: 3P+E, Socket, Solenoid (DIN) connector style A,Non-illuminated
Mounting	: Screw mounting
Center Distance	: 18 mm
Mounting Screw size	: M3x30mm
Operating Temperature	: -40°C TO +120°C
Reference Standard	: DIN-43650, ISO 4400, EN-175301-803
Compliance Marking	: CE, RoHS (On Request)
Approvals	: VDE (On Request)



ME-311/SL

Rated Current	: 10A
Rated Voltage	: 250 V
Connector Type	: 3P+E, Socket Solenoid (DIN) connector style A,illuminated
Mounting	: Screw mounting
Center Distance	: 18 mm
Mounting Screw size	: M3x30mm
Operating Temperature	: -40°C TO +120°C
Reference Standard	: DIN-43650, ISO 4400, EN-175301-803
Compliance Marking	: CE, RoHS (On Request)
Approvals	: VDE (On Request)





SOLENOID (DIN) CONNECTORS

PG-9

HD-209/S

- Rated Current : 10A
- Rated Voltage : 250 V
- Connector Type : 3P+E, Socket Solenoid (DIN) connector style A, Non-illuminated
- Mounting : Screw mounting
- Center Distance : 18 mm
- Mounting Screw size : M3x35mm
- Operating Temperature : -40°C TO +120°C
- Reference Standard : DIN-43650, ISO 4400, EN-175301-803
- Compliance Marking : CE, RoHS (On Request)
- Approvals : VDE (On Request)



HD-209/SL

- Rated Current : 10A
- Rated Voltage : 250 V AC
- Connector Type : 2P+E, Socket Solenoid (DIN) connector style A, Non-illuminated
- Mounting : Screw mounting
- Center Distance : 18 mm
- Mounting Screw size : M3x35mm
- Operating Temperature : -40°C TO +120°C
- Reference Standard : DIN-43650, ISO 4400, EN-175301-803
- Compliance Marking : CE, RoHS (On Request)
- Approvals : VDE (On Request)



PG-11

HD-211/S

- Rated Current : 10A
- Rated Voltage : 250 V
- Connector Type : 2P+E, Socket Solenoid (DIN) connector style A, Non-illuminated
- Mounting : Screw mounting
- Center Distance : 18 mm
- Mounting Screw size : M3x35mm
- Operating Temperature : -40°C TO +120°C
- Reference Standard : DIN-43650, ISO 4400, EN-175301-803
- Compliance Marking : CE, RoHS (On Request)
- Approvals : VDE (On Request)



HD-211/SL

- Rated Current : 10A
- Rated Voltage : 250 V AC
- Connector Type : 2P+E, Socket Solenoid (DIN) connector style A, illuminated
- Mounting : Screw mounting
- Center Distance : 18 mm
- Mounting Screw size : M3x35mm
- Operating Temperature : -40°C TO +120°C
- Reference Standard : DIN-43650, ISO 4400, EN-175301-803
- Compliance Marking : CE, RoHS (On Request)
- Approvals : VDE (On Request)





SOLENOID (DIN) CONNECTORS

HD-309/S

Rated Current : 10A
 Rated Voltage : 250 V AC
 Connector Type : 3P+E, Socket Solenoid (DIN) connector style A,
 Non-illuminated
 Mounting : Screw mounting
 Center Distance : 18 mm
 Mounting Screw size : M3x35mm
 Operating Temperature : -40°C TO +120°C
 Reference Standard : DIN-43650, ISO 4400, EN-175301-803
 Compliance Marking : CE, RoHS (On Request)
 Approvals : VDE (On Request)

PG-9



HD-309/SL

Rated Current : 10A
 Rated Voltage : 250 V
 Connector Type : 3P+E, Socket Solenoid (DIN) connector style A, illuminated
 Mounting : Screw mounting
 Center Distance : 18 mm
 Mounting Screw size : M3x35mm
 Operating Temperature : -40°C TO +120°C
 Reference Standard : DIN-43650, ISO 4400, EN-175301-803
 Compliance Marking : CE, RoHS (On Request)
 Approvals : VDE (On Request)

HD-311/S

Rated Current : 10A
 Rated Voltage : 250 V AC
 Connector Type : 3P+E, Socket Solenoid (DIN) connector style A, illuminated
 Mounting : Screw mounting
 Center Distance : 18 mm
 Mounting Screw size : M3x35mm
 Operating Temperature : -40°C TO +120°C
 Reference Standard : DIN-43650, ISO 4400, EN-175301-803
 Compliance Marking : CE, RoHS (On Request)
 Approvals : VDE (On Request)

PG-11



HD-311/SL

Rated Current : 10A
 Rated Voltage : 250 V
 Connector Type : 3P+E, Socket Solenoid (DIN) connector style A, Non-illuminated
 Mounting : Screw mounting
 Center Distance : 18 mm
 Mounting Screw size : M3x35mm
 Operating Temperature : -40°C TO +120°C
 Reference Standard : DIN-43650, ISO 4400, EN-175301-803
 Compliance Marking : CE, RoHS (On Request)
 Approvals : VDE (On Request)

MER-209/S

Rated Current : 16A
 Rated Voltage : 250 V AC
 Connector Type : 2P+E, Socket Solenoid (DIN) connector style B,
 Non-illuminated
 Mounting : Screw mounting
 Center Distance : 11 mm
 Mounting Screw size : M3x35mm
 Operating Temperature : -40°C TO +120°C
 Reference Standard : DIN-43650, ISO 4400, EN-175301-803
 Compliance Marking : CE, RoHS (On Request)
 Approvals : VDE (On Request)

PG-9





SOLENOID (DIN) CONNECTORS

MER-209/SL

- Rated Current : 16A
- Rated Voltage : 250 V AC
- Connector Type : 2P+E, Socket Solenoid (DIN) connector style B, illuminated
- Mounting : Screw mounting, Screw size: M3x35mm
- Center Distance : 11 mm
- Operating Temperature : -40°C TO +120°C
- Reference Standard : DIN-43650, ISO 4400, EN-175301-803
- Compliance Marking : CE, RoHS (On Request)
- Approvals : VDE (On Request)



PG-7



- Rated Current : 6A
- Rated Voltage : 250 V AC
- Connector Type : 2P+E, Socket Solenoid (DIN) connector style C, Non-illuminated
- Mounting : Screw mounting, Screw size: M2.5x27mm
- Center Distance : 8 mm
- Operating Temperature : -40°C TO +120°C
- Reference Standard : DIN-43650, ISO 4400, EN-175301-803
- Compliance Marking : CE, RoHS (On Request)
- Approvals : cULus (On request)

MEM-207/S-8

MEM-307/S-8

- Rated Current : 6A
- Rated Voltage : 250 V AC
- Connector Type : 3P+E, Socket Solenoid (DIN) connector style Non-illuminated
- Mounting : Screw mounting, Screw size: M2.5x27mm
- Center Distance : 8 mm
- Operating Temperature : -40°C TO +120°C
- Reference Standard : DIN-43650, ISO 4400, EN-175301-803
- Compliance Marking : CE, RoHS (On Request)
- Approvals : cULus (On request)



MEM-207/S-9



- Rated Current : 6A
- Rated Voltage : 250 V AC
- Connector Type : 2P+E, Socket Solenoid (DIN) connector style C, Non-illuminated
- Mounting : Screw mounting, Screw size: M3x28.40mm
- Center Distance : 9.4 mm
- Operating Temperature : -40°C TO +120°C
- Reference Standard : DIN-43650, ISO 4400, EN-175301-803
- Compliance Marking : CE, RoHS (On Request)
- Approvals : NA

MEM-307/S-9

- Rated Current : 6A
- Rated Voltage : 250 V AC
- Connector Type : 3P+E, Socket Solenoid (DIN) connector style C, Non-illuminated
- Mounting : Screw Mounting, Screw size: M3x28.40mm
- Center Distance : 9.4mm
- Operating Temperature : -40°C TO +120°C
- Reference Standard : DIN-43650, ISO 4400, EN-175301-803
- Compliance Marking : CE, RoHS (On Request)
- Approvals : NA

