

NEMA CONNECTORS



NEMA TWIST LOCK PLUGS

ENP-LD5-20

Connector Type	: Twist lock L5-20P type
Rated Current	: 20A
Rated Voltage	: 125V AC
Mounting	: NA
Operating Temperature	: 0°C TO 75°C
Reference Standard	: UL-498, NEMA WD 6, CSA C22.2 No.42-10
Compliance Marking	: RoHS
Approvals	: cULus



ENP-LD6-20

Connector Type	: Twist lock L6-20P type
Rated Current	: 20A
Rated Voltage	: 250V AC
Mounting	: NA
Operating Temperature	: 0°C TO 75°C
Reference Standard	: UL-498, NEMA WD 6, CSA C22.2 No.42-10
Compliance Marking	: RoHS
Approvals	: cULus



ENP-LD5-30

Connector Type	: Twist lock L5-30P type
Rated Current	: 30A
Rated Voltage	: 125V AC
Mounting	: NA
Operating Temperature	: 0°C TO 75°C
Reference Standard	: UL-498, NEMA WD 6, CSA C22.2 No.42-10
Compliance Marking	: RoHS
Approvals	: cULus



ENP-LD6-30

Connector Type	: Twist lock L6-30P type
Rated Current	: 30A
Rated Voltage	: 250V AC
Mounting	: NA
Operating Temperature	: 0°C TO 75°C
Reference Standard	: UL-498, NEMA WD 6, CSA C22.2 No.42-10
Compliance Marking	: RoHS
Approvals	: cULus





ENP-LD21-20

Connector Type : Twist lock L21-20P type
 Rated Current : 20A
 Rated Voltage : 208V AC
 Mounting : NA
 Operating Temperature : 0°C TO 75°C
 Reference Standard : UL-498, NEMA WD 6, CSA C22.2 No.42-10
 Compliance Marking : RoHS
 Approvals : cULus



ENP-LD21-30

Connector Type : Twist lock L21-30P type
 Rated Current : 30A
 Rated Voltage : 208V AC
 Mounting : NA
 Operating Temperature : 0°C TO 75°C
 Reference Standard : UL-498, NEMA WD 6, CSA C22.2 No 42-10
 Compliance Marking : RoHS
 Approvals : cULus

NEMA 3 GANG RECEPTACLE

ENO-0515-33-X

Connector Type : 5-15R Type
 Rated Current : 15A
 Rated Voltage : 125V AC
 Mounting : Panel, Snap mounting
 Operating Temperature : 0°C TO 75°C* on request upto 125°C
 Reference Standard : UL-498, NEMA WD 6, CSA C22.2 NO. 182.3
 Compliance Marking : RoHS
 Approvals : cULus



ENO-0515-43-X

Connector Type : 5-15R Type
 Rated Current : 15A
 Rated Voltage : 125V AC
 Mounting : Panel, Snap mounting
 Operating Temperature : 0°C TO 75°C* on request upto 125°C
 Reference Standard : UL-498, NEMA WD 6, CSA C22.2 NO. 182.3
 Compliance Marking : RoHS
 Approvals : cULus





ENO-0520-33-X

Connector Type : 5-20R Type
 Rated Current : 20A
 Rated Voltage : 125V AC
 Mounting : Panel, Snap mounting
 Operating Temperature : 0°C TO 75°C* on request upto 125°C
 Reference Standard : UL-498, NEMA WD 6, CSA C22.2 NO. 182.3
 Compliance Marking : RoHS
 Approvals : cULus



NEMA 4 GANG RECEPTACLE



ENO-0520-43-X

Connector Type : 5-20R Type
 Rated Current : 20A
 Rated Voltage : 125V AC
 Mounting : Panel, Snap mounting
 Operating Temperature : 0°C TO 75°C* on request upto 125°C
 Reference Standard : UL-498, NEMA WD 6, CSA C22.2 NO. 182.3
 Compliance Marking : RoHS
 Approvals : cULus

NEMA RECEPTACLE

ENO-1112

Connector Type : 5-20R Type
 Rated Current : 20A
 Rated Voltage : 125V AC
 Mounting : Panel, Snap mounting
 Operating Temperature : 0°C TO 65°C* on request upto 125°C
 Reference Standard : UL-498, NEMA WD 6, CSA C22.2 NO. 182.3
 Compliance Marking : RoHS
 Approvals : cULus



NEMA TWIST LOCK RECEPTACLE



ENO-3112 SERIES

Connector Type : L5-20R Type
 Rated Current : 20A
 Rated Voltage : 125V
 Mounting : Panel, Screw-type
 Operating Temperature : 0°C TO 65°C* on request upto 125°C
 Reference Standard : UL-498, UL-486E, NEMA WD 6, CAN/CSA C22.2 No.0-M91, CSA C22.2 No.42-99
 Compliance Marking : RoHS
 Approvals : cULus, cCSAus



ENO-3113 SERIES

Connector Type : L5-30R Type
 Rated Current : 30A
 Rated Voltage : 125V
 Mounting : Panel, Screw-type
 Operating Temperature : 0°C TO 65°C* on request upto 125°C
 Reference Standard : UL-498, UL-486E, NEMA WD 6, CAN/CSA C22.2 No.0-M91, CSA C22.2 No.42-99
 Compliance Marking : RoHS
 Approvals : cULus, cCSAus



ENO-3112-R, ENO-3112-F-R

Connector Type : L5-30R Type
 Rated Current : 30A
 Rated Voltage : 125V
 Mounting : Panel, Screw-type
 Operating Temperature : 0°C TO 65°C* on request upto 125°C
 Reference Standard : UL-498, UL-486E, NEMA WD 6, CAN/CSA C22.2 No.0-M91, CSA C22.2 No.42-99
 Compliance Marking : RoHS
 Approvals : cCSAus

ENO-3122 SERIES

Connector Type : L6-20R Type
 Rated Current : 20A
 Rated Voltage : 250V
 Mounting : Panel, Screw-type
 Operating Temperature : 0°C TO 65°C* on request upto 125°C
 Reference Standard : UL-498, UL-486E, NEMA WD 6, CAN/CSA C22.2 No.0-M91, CSA C22.2 No.42-99
 Compliance Marking : RoHS
 Approvals : cULus, cCSAus



NEMA TWIST LOCK RECEPTACLE-PCB TERMINAL



ENO-3122-P-X

Connector Type : Twist lock L6-20R PCB type
 Rated Current : 20A
 Rated Voltage : 250 V
 Mounting : Panel, Screw & PCB type
 Operating Temperature : 0°C TO 65°C* on request upto 125°C
 Reference Standard : UL-498, NEMA WD 6, CSA C22.2 No.42-99
 Compliance Marking : RoHS
 Approvals : cULus approval





NEMA TWIST LOCK RECEPTACLE

ENO-3122-X

Connector Type : Twist lock L6-20R type
 Rated Current : 20A
 Rated Voltage : 250 V
 Mounting : Panel, Screw type
 Operating Temperature : 0°C TO 65°C* on request upto 125°C
 Reference Standard : UL-498, UL-486E, NEMA WD 6, CAN/CSA C22.2 No.0-M91, CSA C22.2 No.42-99
 Compliance Marking : RoHS
 Approvals : cULus, cCSAus



ENO-3123 SERIES

Connector Type : Twist lock L6-30R type
 Rated Current : 30A
 Rated Voltage : 250 V
 Mounting : Panel, Screw type
 Operating Temperature : 0°C TO 65°C* on request upto 125°C
 Reference Standard : UL-498, UL-486E, NEMA WD 6, CAN/CSA C22.2 No.0-M91, CSA C22.2 No.42-99
 Compliance Marking : RoHS
 Approvals : cULus, cCSAus



NEMA TWIST LOCK RECEPTACLE-PCB TERMINAL

ENO-3123-P-X

Connector Type : Twist lock L6-30R PCB Mounted type
 Rated Current : 30A
 Rated Voltage : 250 V
 Mounting : Panel, Screw type & PCB type
 Operating Temperature : 0°C TO 65°C* on request upto 125°C
 Reference Standard : UL-498, NEMA WD 6, CSA C22.2 No.42-99
 Compliance Marking : RoHS
 Approvals : cULus, cCSAus



NEMA TWIST LOCK RECEPTACLE

ENO-3123X

Connector Type : Twist lock L6-30R type
 Rated Current : 30A
 Rated Voltage : 250 V
 Mounting : Panel, Screw type
 Operating Temperature : 0°C TO 65°C* on request upto 125°C
 Reference Standard : UL-498, UL-486E, NEMA WD 6, CAN/CSA C22.2 No.0-M91, CSA C22.2 No.42-99
 Compliance Marking : RoHS
 Approvals : cULus, cCSAus



ENO-4123

Connector Type : Twist lock L14-30R type
 Rated Current : 30A
 Rated Voltage : 125/250 V
 Mounting : Panel, Screw type
 Operating Temperature : 0°C TO 65°C* on request upto 125°C
 Reference Standard : UL-498, UL-486E, NEMA WD 6, CAN/CSA C22.2 No.0-M91, CSA C22.2 No.42-99
 Compliance Marking : RoHS
 Approvals : cULus, cCSAus





NEMA SOCKET

ENO-3123-F

Connector Type : Twist lock L6-30R type
 Rated Current : 30A
 Rated Voltage : 250 V
 Mounting : Panel, Screw type
 Operating Temperature : 0°C TO 65°C * on request upto 125°C
 Reference Standard : 486E, NEMA WD 6, CAN/CSA C22.2 No.0-M91,
 CSA C22.2 No.42-99
 Compliance Marking : RoHS
 Approvals : cULus, cCSAus



ENO-3113-F

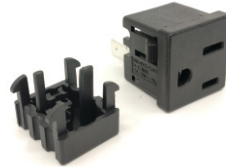
Connector Type : Twist lock L5-30R type
 Rated Current : 30A
 Rated Voltage : 125 V
 Mounting : Panel, Screw type
 Operating Temperature : 0°C TO 65°C * on request upto 125°C
 Reference Standard : UL-498, UL-486E, NEMA WD 6, CAN/CSA
 C22.2 No.0-M91, CSA C22.2 No.42-99
 Compliance Marking : RoHS
 Approvals : cULus, cCSAus



NEMA SOCKET IDC TYPE

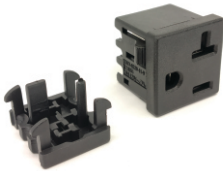
ENO-0515-11-X, ENO-0515-12-X

Connector Type : Nema 5-15R
 Rated Current : 15A
 Rated Voltage : 125 V
 Mounting : Panel, Snap-in type
 Operating Temperature : 0°C TO 65°C* on request upto 125°C
 Reference Standard : NEMA WD 6; UL-498, CSA: 22.2 No. 42-10
 Compliance Marking : RoHS
 Approvals : cULus



ENO-0520-11-X, ENO-0520-12-X

Connector Type : Nema 5-20R
 Rated Current : 20A
 Rated Voltage : 125 V
 Mounting : Panel, Snap-in type
 Operating Temperature : 0°C TO 65°C* on request upto 125°C
 Reference Standard : NEMA WD 6; UL-498, CSA: 22.2 No. 42-10
 Compliance Marking : RoHS
 Approvals : cULus



ENO-1111-X

Connector Type : Nema 5-15R
 Rated Current : 15A
 Rated Voltage : 125 V
 Mounting : Panel, Snap-in type
 Operating Temperature : 0°C TO 65°C* on request upto 125°C
 Reference Standard : NEMA WD 6; UL-498, CSA: 22.2 No. 42-10
 Compliance Marking : RoHS
 Approvals : cULus

