



**COMET**®

An uninterrupted relationship since 1960

**Manufacturers of Cable Glands, Terminals (Lugs) & Accessories**

**National Price List Dt. 28-05-2024  
Cable Glands & Accessories**

**COMET MAKE DOUBLE COMPRESSION TYPE WEATHERPROOF / FLAMEPROOF BRASS CABLE GLANDS DULY NICKEL-PLATED (ARMORED)**

Sr. No.	Cable Overall Diameter (mm)	Thread (ET)	Weatherproof (CBW)		Flameproof IIA/ IIB (CBF)	
			Code	Unit Price (Rs)	Code	Unit Price (Rs)
1	8.0 - 12.5	3/4"	CBW01SS	204.00	CBF01SS	258.00
2	12.6 - 16.5	3/4"	CBW01S	224.00	CBF01S	278.00
3	16.6 - 18.0	3/4"	CBW01	248.00	CBF01	296.00
4	16.6- 18.0	1"	CBW01A	280.00	CBF01A	339.00
5	18.1 - 20.0	1"	CBW02	331.00	CBF02	406.00
6	18.1 - 20.0	3/4"	CBW02A	342.00	CBF02A	428.00
7	20.1 - 23.0	1"	CBW03	355.00	CBF03	460.00
8	23.1 - 26.0	1"	CBW04	460.00	CBF04	586.00
9	23.1 - 26.0	1-1/4"	CBW04A	517.00	CBF04A	656.00
10	26.1 - 30.0	1-1/4"	CBW05	558.00	CBF05	694.00
11	26.1 - 30.0	1-1/2"	CBW05A	585.00	CBF05A	747.00
12	30.1 - 33.0	1-1/2"	CBW06	820.00	CBF06	1001.00
13	30.1 - 33.0	1-1/4"	CBW06A	851.00	CBF06A	1040.00
14	33.1 - 37.0	1-1/2"	CBW07	991.00	CBF07	1173.00
15	37.1 - 41.0	2"	CBW08	1187.00	CBF08	1386.00
16	41.1 - 46.0	2"	CBW09	1401.00	CBF09	1603.00
17	46.1 - 52.0	2"	CBW010	1573.00	CBF010	1845.00
18	46.1 - 52.0	2-1/2"	CBW010A	1799.00	CBF010A	2075.00
19	52.1 - 56.0	2-1/2"	CBW011S	2373.00	CBF011S	2629.00
20	56.1 - 60.0	2-1/2"	CBW011	2373.00	CBF011	2629.00
21	60.1 - 66.0	3"	CBW012	2756.00	CBF012	3114.00
22	66.1 - 72.0	3"	CBW013A	3626.00	CBF013A	3882.00
23	72.1 - 78.0	3-1/4"	CBW013	3626.00	CBF013	3882.00
24	78.1 - 84.0	3-1/2"	CBW014	4558.00	CBF014	4816.00
25	84.1 - 94.0	4"	CBW015	6690.00	CBF015	6811.00
26	94.1 - 104.0	4-1/2"	CBW016	7598.00	CBF016	7911.00

**COMET MAKE DOUBLE COMPRESSION TYPE WEATHERPROOF / FLAMEPROOF BRASS CABLE GLANDS DULY NICKEL-PLATED (UN-ARMORED)**

Sr. No.	Cable Overall Diameter (mm)	Thread	Weatherproof (CBW)		Flameproof IIA/ IIB (CBF)	
			Code	Unit Price (Rs)	Code	Unit Price (Rs)
1	5.0 - 12.5	3/4"ET	CBW01SS (UN)	204.00	CBF01SS (UN)	258.00
2	12.6 - 14.5	3/4" ET	CBW01S (UN)	224.00	CBF01S (UN)	278.00
3	14.6- 18.0	1" ET	CBW01A (UN)	280.00	CBF01A (UN)	339.00
4	18.1 - 20.0	1" ET	CBW02 (UN)	331.00	CBF02 (UN)	406.00
5	20.1 - 22.5	M28	CBW03SP (UN)	355.00	CBF03SP (UN)	460.00
6	22.6 - 26.0	1-1/4" ET	CBW04A (UN)	517.00	CBF04A (UN)	656.00
7	26.1 - 30.0	1-1/2" ET	CBW05A (UN)	585.00	CBF05A (UN)	747.00
8	30.1 - 33.0	M40	CBW06SP (UN)	820.00	CBF06SP (UN)	1001.00
9	33.1 - 36.0	M42	CBW07SP (UN)	991.00	CBF07SP (UN)	1173.00
10	36.1 - 41.0	2" ET	CBW08 (UN)	1187.00	CBF08 (UN)	1386.00
11	41.1 - 44.0	2" ET	CBW09 (UN)	1401.00	CBF09 (UN)	1603.00
12	44.1 - 52.0	2-1/2"	CBW010A (UN)	1799.00	CBF010A (UN)	2075.00
13	52.5 - 56.0	2-1/2"	CBW011S (UN)	2373.00	CBF011S (UN)	2629.00
14	56.1 - 60.0	M70	CBW011SP (UN)	2373.00	CBF011SP (UN)	2629.00
15	60.1 - 66.0	3" ET	CBW012 (UN)	2756.00	CBF012 (UN)	3114.00
16	66.1 - 68.0	3.1/4" ET	CBW013A (UN)	3626.00	CBF013A (UN)	3882.00
17	68.1 - 74.0	3.1/4" ET	CBW013 (UN)	3626.00	CBF013 (UN)	3882.00
18	74.1 - 80.0	3-1/2" ET	CBW014 (UN)	4558.00	CBF014 (UN)	4816.00
19	80.1 - 87.0	4" ET	CBW015 (UN)	6690.00	CBF015 (UN)	6811.00
20	87.1 - 104.0	4-1/2" ET	CBW016 (UN)	7598.00	CBF016 (UN)	7911.00

**COMET MAKE SINGLE COMPRESSION BRASS CABLE GLANDS WITH NICKEL-PLATED**

Sr. No.	COMET MEDIUM DUTY		COMET HEAVY DUTY (SIBG SERIES)	
	Code	Unit Price (Rs)	Code	Unit Price (Rs)
1	1/2"	58.00	1616	90.00
2	5/8"	58.00	1619	90.00
3	3/4"	65.00	2119	131.00
4	7/8"	79.00	2125	127.00
5	1"	114.00	2925	207.00
6	1-1/8"	171.00	2932	200.00
7	1-1/4"	194.00	2938	200.00
8	1-3/8"	245.00	3638	347.00
9	1-1/2"	277.00	4251	627.00
10	1-3/4"	327.00	5451	688.00
11	2"	414.00	5463	688.00
12	2-1/4"	592.00	6063	1052.00
13	2-1/2"	731.00	6675	1242.00
14	2-3/4"	793.00	7882	1726.00
15	3"	955.00		
16	3-1/4"	1052.00		
17	3-1/2"	1815.00		
18	4"	2080.00		
18	4-1/2"	3144.00		

**COMET MAKE DOUBLE COMPRESSION WEATHERPROOF / FLAMEPROOF BRASS CABLE  
GLAND DULY NICKEL PLATED WITH ALTERNATE THREAD (MM)**

Sr. No.	Cable Overall Diameter (mm)	Weatherproof (CBW)			Flameproof IIA/ IIB (CBF)		
		Code	Thread (MM)	Unit Price (Rs)	Code	Thread (MM)	Unit Price (Rs)
1	8.0 - 12.5	CBW01SS	M20	226.00	CBF01SS	M20	284.00
2	12.6 - 16.5	CBW01S	M20	250.00	CBF01S	M20	308.00
3	16.6 - 18.0	CBW01	M20	273.00	CBF01	M20	327.00
4	16.6- 18.0	CBW01A	M25	306.00	CBF01A	M25	372.00
5	18.1 - 20.0	CBW02	M25	360.00	CBF02	M25	445.00
6	18.1 - 20.0	CBW02A	M20	378.00	CBF02A	M20	473.00
7	20.1 - 23.0	CBW03	M25	392.00	CBF03	M25	508.00
8	23.1 - 26.0	CBW04	M25	508.00	CBF04	M25	646.00
9	23.1 - 26.0	CBW04A	M32	561.00	CBF04A	M32	719.00
10	26.1 - 30.0	CBW05	M32	614.00	CBF05	M32	764.00
11	26.1 - 30.0	CBW05A	M40	639.00	CBF05A	M40	820.00
12	30.1 - 33.0	CBW06	M40	900.00	CBF06	M40	1094.00
13	30.1 - 33.0	CBW06A	M32	900.00	CBF06A	M32	1094.00
14	33.1 - 37.0	CBW07	M40	1051.00	CBF07	M40	1244.00
15	37.1 - 41.0	CBW08	M50	1258.00	CBF08	M50	1529.00
16	41.1 - 46.0	CBW09	M50	1545.00	CBF09	M50	1775.00
17	46.1 - 52.0	CBW010	M50	1731.00	CBF010	M50	2023.00
18	46.1 - 52.0	CBW010A	M63	1979.00	CBF010A	M63	2285.00
19	52.1 - 56.0	CBW011S	M63	2541.00	CBF011S	M63	2828.00
20	56.1 - 60.0	CBW011	M63	2541.00	CBF011	M63	2828.00
21	60.1 - 66.0	CBW012	M75	2955.00	CBF012	M75	3341.00
22	66.1 - 72.0	CBW013A	M75	3857.00	CBF013A	M75	4140.00
23	72.1 - 78.0	CBW013	M82	3857.00	CBF013	M82	4140.00
24	78.1 - 84.0	CBW014	M90	5028.00	CBF014	M90	5295.00
25	84.1 - 94.0	CBW015	M100	7354.00	CBF015	M100	7495.00
26	94.1 - 104.0	CBW016	M110	8360.00	CBF016	M110	8706.00

**COMET MAKE DOUBLE COMPRESSION TYPE FLAMEPROOF IIC BRASS CABLE GLANDS DULY NICKEL PLATED WITH ET / MM /NPT THREAD**

Sr. No	Cable Overall Diameter (mm)	Code	Thread (ET)	Unit Price (Rs)	Thread (MM)	Unit Price (Rs)	Code	Thread (NPT)	Unit Price (Rs)
1	8.0 - 12.5	CBF2C01SS	3/4"	370.00	M20	391.00	CBF2C01SS	1/2"NPT	408.00
2	12.6 - 16.5	CBF2C01S	3/4"	399.00	M20	420.00	CBF2C01S	1/2"NPT	441.00
3	16.6 - 18.0	CBF2C01	3/4"	415.00	M20	435.00	CBF2C01S	3/4"NPT	481.00
4	16.6- 18.0	CBF2C01A	1"	474.00	M25	498.00	CBF2C01	1/2"NPT	458.00
5	18.1 - 20.0	CBF2C02	1"	582.00	M25	611.00	CBF2C01	3/4"NPT	543.00
6	18.1 - 20.0	CBF2C02A	3/4"	613.00	M20	645.00	CBF2C02	3/4"NPT	688.00
7	20.1 - 23.0	CBF2C03	1"	659.00	M25	691.00	CBF2C02	1"NPT	732.00
8	23.1 - 26.0	CBF2C04	1"	838.00	M25	880.00	CBF2C03	1"NPT	776.00
9	23.1 - 26.0	CBF2C04A	1-1/4"	937.00	M32	983.00	CBF2C03	1.25"NPT	879.00
10	26.1 - 30.0	CBF2C05	1-1/4"	993.00	M32	1042.00	CBF2C04	1"NPT	1036.00
11	26.1 - 30.0	CBF2C05A	1-1/2"	1066.00	M40	1117.00	CBF2C05	1.25"NPT	1106.00
12	30.1 - 33.0	CBF2C06	1-1/2"	1428.00	M40	1500.00	CBF2C05	1.5"NPT	1309.00
13	30.1 - 33.0	CBF2C06A	1-1/4"	1488.00	M32	1562.00	CBF2C06	1.5"NPT	1589.00
14	33.1 - 37.0	CBF2C07	1-1/2"	1678.00	M40	1763.00	CBF2C07	1.5"NPT	1781.00
15	37.1 - 41.0	CBF2C08	2"	1983.00	M50	2082.00	CBF2C08	1.5"NPT	2207.00
16	41.1 - 46.0	CBF2C09	2"	2294.00	M50	2406.00	CBF2C08	2"NPT	2334.00
17	46.1 - 52.0	CBF2C010	2"	2640.00	M50	2770.00	CBF2C09	2"NPT	2550.00
18	46.1 - 52.0	CBF2C010A	2-1/2"	2967.00	M63	3116.00	CBF2C010	2"NPT	3082.00
19	52.1 - 56.0	CBF2C011S	2-1/2"	3679.00	M63	3862.00	CBF2C011	2.5"NPT	4297.00
20	56.1 - 60.0	CBF2C011	2-1/2"	3679.00	M63	3862.00	CBF2C012	3"NPT	5085.00
21	60.1 - 66.0	CBF2C012	3"	4353.00	M75	4572.00	CBF2C013	3"NPT	6338.00
22	66.1 - 72.0	CBF2C013A	3"	5427.00	M75	5700.00			
23	72.1 - 78.0	CBF2C013	3-1/4"	5427.00	M82	5700.00			
24	78.1 - 84.0	CBF2C014	3-1/2"	6734.00	M90	7069.00			
25	84.1 - 94.0	CBF2C015	4"	9525.00	M100	10000.00			
26	94.1 - 104.0	CBF2C016	4-1/2"	11062.00	M110	11615.00			

**COMET MAKE DOUBLE COMPRESSION WEATHERPROOF / FLAMEPROOF BRASS CABLE  
GLAND DULY NICKEL PLATED WITH ALTERNATE THREAD (NPT/ PG)**

Sr. No	Cable Overall Diameter (mm)	Thread		Weatherproof (CBW)		Flameproof IIA/IIB (CBF)	
		NPT	PG	Code	Unit Price (Rs)	Code	Unit Price (Rs)
1	8.0 - 12.5	1/2"NPT	PG11	CBW01SS	239.00	CBF01SS	293.00
2	12.6 - 16.5	1/2" NPT	PG11	CBW01S	267.00	CBF01S	319.00
3	16.6 - 18.0	1/2" NPT	PG11	CBW01	293.00	CBF01	347.00
4	16.6 - 18.0	3/4" NPT	PG13.5	CBW01	334.00	CBF01	395.00
5	18.1 - 20.0	3/4" NPT	PG13.5	CBW02	428.00	CBF02	508.00
6	18.1 - 20.0	1" NPT	PG16	CBW02	532.00	CBF02	586.00
7	20.1 - 23.0	1" NPT	PG16	CBW03	561.00	CBF03	613.00
8	23.1 - 26.0	1" NPT	PG21	CBW04	625.00	CBF04	736.00
9	23.1 - 26.0	1.1/4" NPT	PG21	CBW04	708.00	CBF04	839.00
10	26.1 - 30.0	1.1/4" NPT	PG29	CBW05	874.00	CBF05	1036.00
11	26.1 - 30.0	1.1/2" NPT	PG29	CBW05	1099.00	CBF05	1250.00
12	30.1 - 33.0	1.1/4" NPT	PG36	CBW06	1132.00	CBF06	1300.00
13	30.1 - 33.0	1.1/2" NPT	PG36	CBW06	1258.00	CBF06	1423.00
14	33.1 - 37.0	1.1/2" NPT	PG36	CBW07	1483.00	CBF07	1639.00
15	37.1 - 41.0	2" NPT	-	CBW08	1789.00	CBF08	2004.00
16	41.1 - 46.0	2" NPT	-	CBW09	2019.00	CBF09	2305.00
17	46.1 - 52.0	2" NPT	-	CBW010	2357.00	CBF010	2675.00
18	52.1 - 56.0	2.1/2" NPT	-	CBW011S	3072.00	CBF011S	3377.00
19	56.1 - 60.0	2.1/2" NPT	-	CBW011	3072.00	CBF011	3377.00
20	60.1 - 66.0	3" NPT	-	CBW012	3684.00	CBF012	4049.00

**COMET MAKE BRASS REDUCER DULY NICKEL PLATED WITHOUT LOCKNUT**

Sr. No.	Size	Weatherproof	Flameproof IIA/IIB	Flameproof IIC
		Unit Price (Rs)	Unit Price (Rs)	Unit Price (Rs)
1	3"ET(M) x 2.1/2"ET(F)	1034.00	1324.00	1457.00
2	2-1/2"ET(M) x 2"ET(F)	861.00	1143.00	1259.00
3	2-1/2"ET(M) x 1.1/2"ET(F)	993.00	1243.00	1364.00
4	2-1/2"ET(M) x 1.1/4"ET(F)	1027.00	1297.00	1428.00
5	2"ET(M) x 1.1/2"ET(F)	614.00	740.00	816.00
6	2"ET(M) x 1.1/4"ET(F)	614.00	740.00	816.00
7	2"ET(M) x 1"ET(F)	659.00	810.00	890.00
8	1.1/2"ET(M) x 1.1/4"ET(F)	492.00	550.00	604.00
9	1.1/2"ET(M) x 1"ET(F)	492.00	550.00	604.00
10	1.1/4"ET(M) x 1"ET(F)	221.00	287.00	315.00
11	1.1/4"ET(M) x 3/4"ET(F)	221.00	287.00	315.00
12	1"ET(M) x 3/4"ET(F)	108.00	134.00	147.00
13	1"ET(M) x 1/2"ET(F)	135.00	208.00	229.00
14	3/4"NPT(M) x 1/2"NPT(F)	135.00	169.00	186.00

**COMET MAKE BRASS REDUCER DULY NICKEL PLATED WITHOUT LOCKNUT**

Sr. No.	Size	Weatherproof	Flameproof IIA/ IIB	Flameproof IIC
		Unit Price (Rs)	Unit Price (Rs)	Unit Price (Rs)
1	M25(M) x M20(F)	119.00	147.00	164.00
2	M32(M) x M20(F)	251.00	315.00	350.00
3	M32(M) x M25(F)	251.00	315.00	350.00
4	M40(M) x M20(F)	611.00	676.00	747.00
5	M40(M) x M25(F)	542.00	611.00	676.00
6	M40(M) x M32(F)	542.00	611.00	676.00
7	M50(M) x M25(F)	747.00	903.00	993.00
8	M50(M) x M32(F)	676.00	813.00	903.00
9	M50(M) x M40(F)	676.00	813.00	903.00
10	M63(M) x M40(F)	1016.00	1308.00	1444.00
11	M63(M) x M50(F)	948.00	1243.00	1353.00
12	M75(M) x M63(F)	1135.00	1444.00	1526.00

**COMET MAKE BRASS STOPPING PLUG DULY NICKEL PLATED WITHOUT LOCKNUT**

Sr. No.	Size (ET)	Weatherproof	Flameproof IIA/ IIB	Flameproof IIC
		Unit Price (Rs)	Unit Price (Rs)	Unit Price (Rs)
1	3/4"ET	90.00	116.00	126.00
2	1"ET	122.00	161.00	175.00
3	1-1/4"ET	195.00	251.00	274.00
4	1-1/2"ET	390.00	459.00	505.00
5	2"ET	586.00	646.00	714.00
6	2-1/2"ET	926.00	1066.00	1170.00
7	3"ET	1234.00	1400.00	1540.00
8	3-1/4"ET	1455.00	1678.00	1845.00
9	3-1/2"ET	1614.00	1839.00	2023.00

**COMET MAKE BRASS STOPPING PLUG DULY NICKEL PLATED WITHOUT LOCKNUT**

Sr. No.	Size (MM)	Weatherproof	Flameproof IIA/ IIB	Flameproof IIC
		Unit Price (Rs)	Unit Price (Rs)	Unit Price (Rs)
1	M20	100.00	126.00	139.00
2	M25	130.00	175.00	192.00
3	M32	215.00	274.00	305.00
4	M40	424.00	505.00	553.00
5	M50	644.00	711.00	778.00
6	M63	1016.00	1173.00	1288.00
7	M75	1353.00	1534.00	1694.00
8	M82	1769.00	1839.00	2030.00

**COMET MAKE BRASS STOPPING PLUG DULY NICKEL PLATED WITHOUT LOCKNUT**

Sr. No.	Size (NPT)	Weatherproof	Flameproof IIA/ IIB	Flameproof IIC
		Unit Price (Rs)	Unit Price (Rs)	Unit Price (Rs)
1	1/2"NPT	126.00	161.00	166.00
2	3/4"NPT	244.00	276.00	293.00
3	1"NPT	369.00	411.00	436.00
4	1.1/4"NPT	614.00	689.00	722.00
5	1.1/2"NPT	942.00	1025.00	1075.00
6	2"NPT	1092.00	1231.00	1290.00

**COMET MAKE BRASS LOCKNUT DULY NICKEL PLATED.**

Sr. No.	Size	Rate / Pcs	Size	Unit Price (Rs)	Size	Unit Price (Rs)
1	01SS	21.00	3/4"ET	23.00	M20	25.00
2	01S	23.00	1"ET	27.00	M25	30.00
3	01	23.00	1-1/4"ET	58.00	M32	59.00
4	01A	27.00	1-1/2"ET	79.00	M40	83.00
5	02	27.00	2"ET	160.00	M50	168.00
6	02A	27.00	2-1/2"ET	226.00	M63	237.00
7	03	27.00	3"ET	250.00	M75	263.00
8	04	48.00	3-1/4"ET	360.00	M82	379.00
9	04A	58.00				
10	05	58.00				
11	05A	68.00				
12	06	68.00				
13	06A	68.00				
14	07	79.00				
15	08	90.00				
16	09	90.00				
17	010	160.00				
18	010A	226.00				
19	011	226.00				
20	012	250.00				
21	013	360.00				



**COMET MAKE PVC SHROUD & BRASS EARTH TAG**

Sr. No.	DOUBLE COMPRESSION				SINGLE COMPRESSION		
	Size	PVC Shrouds	FRLS Shrouds	Earth Tag (Brass)	Size	PVC Shrouds	Earth Tag (Brass)
		Unit Price (Rs)	Unit Price (Rs)	Unit Price (Rs)		Unit Price (Rs)	Unit Price (Rs)
1	01SS	12.00	51.00	18.00	1616	12.00	18.00
2	01S	12.00	51.00	18.00	1619	12.00	18.00
3	01	13.00	56.00	18.00	2119	14.00	18.00
4	01A	13.00	56.00	24.00	2125	14.00	24.00
5	02	14.00	61.00	24.00	2925	21.00	24.00
6	02A	14.00	61.00	18.00	2932	21.00	30.00
7	03	14.00	61.00	24.00	2938	21.00	37.00
8	04	17.00	75.00	24.00	3638	35.00	37.00
9	04A	17.00	75.00	30.00	4251	56.00	55.00
10	05	21.00	89.00	30.00	5451	68.00	55.00
11	05A	21.00	89.00	37.00	5463	68.00	74.00
12	06	29.00	131.00	37.00	6063	74.00	74.00
13	06A	29.00	152.00	30.00	6675	94.00	102.00
14	07	35.00	152.00	37.00	7882	155.00	118.00
15	08	46.00	206.00	55.00			
16	09	56.00	246.00	55.00			
17	010	68.00	300.00	55.00			
18	010A	68.00	300.00	74.00			
19	011S	74.00	328.00	74.00			
20	011	74.00	328.00	74.00			
21	012	94.00	409.00	102.00			
22	013	155.00	684.00	118.00			
23	014	458.00	1764.00	369.00			
24	015	540.00	1871.00	635.00			
25	016	624.00	2396.00				

**COMET MAKE DOUBLE COMPRESSION TYPE WEATHERPROOF / FLAMEPROOF SS-304 / SS-316 CABLE GLANDS**

Sr. No.	Size	Thread (ET)	Thread (MM)	SS-304 CABLE GLAND		SS-316 CABLE GLAND	
				Weatherproof (CBW) Unit Price (Rs)	Flameproof (CBF) Unit Price (Rs)	Weatherproof (CBW) Unit Price (Rs)	Flameproof (CBF) Unit Price (Rs)
1	01SS	3/4"ET	M20	504.00	578.00	661.00	762.00
2	01S	3/4"ET	M20	611.00	677.00	819.00	880.00
3	01	3/4"ET	M20	753.00	857.00	1052.00	1143.00
4	01A	1"ET	M25	791.00	899.00	1104.00	1202.00
5	02	1"ET	M25	1038.00	1166.00	1313.00	1449.00
6	02A	3/4"ET	M20	1090.00	1224.00	1379.00	1518.00
7	03	1"ET	M25	1079.00	1198.00	1394.00	1521.00
8	04	1"ET	M25	1664.00	1796.00	2180.00	2366.00
9	04A	1.1/4"ET	M32	1748.00	1887.00	2291.00	2481.00
10	05	1.1/4"ET	M32	1860.00	2045.00	2500.00	2657.00
11	05A	1.1/2"ET	M40	1876.00	2142.00	2623.00	2791.00
12	06	1.1/2"ET	M40	2260.00	2569.00	3152.00	3419.00
13	06A	1.1/4"ET	M32	2374.00	2698.00	3312.00	3590.00
14	07	1.1/2"ET	M40	3174.00	3425.00	3552.00	3812.00
15	08	2"ET	M50	4171.00	4490.00	4809.00	5126.00
16	09	2"ET	M50	4707.00	5383.00	5258.00	5783.00
17	010	2"ET	M50	6055.00	6360.00	6833.00	7622.00
18	010A	2.5"ET	M63	6358.00	6678.00	7174.00	8003.00
19	011S	2.5"ET	M63	8071.00	8806.00	10184.00	11287.00
20	011	2.5"ET	M63	8071.00	8806.00	10184.00	11287.00
21	012	3"ET	M75	9419.00	10273.00	11563.00	12664.00
22	013	3.25"ET	M82	11008.00	12007.00	14078.00	15487.00

**COMET MAKE SS-304 / 316 LOCKNUT**

Sr. No.	SS-304			SS-316		
	Size	Size	Unit Price (Rs)	Size	Size	Unit Price (Rs)
1	3/4"ET	M20	64.00	3/4"ET	M20	71.00
2	1"ET	M25	100.00	1"ET	M25	121.00
3	1-1/4"ET	M32	124.00	1-1/4"ET	M32	159.00
4	1-1/2"ET	M40	199.00	1-1/2"ET	M40	250.00
5	2"ET	M50	300.00	2"ET	M50	358.00

**COMET MAKE SS-304 / 316 STOPPING PLUG (THREAD - ET / MM) WITHOUT LOCKNUT**

Sr. No.	Size (ET / MM)	SS-304		SS-316	
		Weatherproof Unit Price (Rs)	Flameproof Unit Price (Rs)	Weatherproof Unit Price (Rs)	Flameproof Unit Price (Rs)
1	3/4"ET / M20	199.00	228.00	228.00	278.00
2	1" ET / M25	278.00	338.00	348.00	399.00
3	1-1/4" ET / M32	348.00	447.00	498.00	557.00
4	1-1/2" ET / M40	557.00	697.00	746.00	846.00
5	2" ET / M50	756.00	896.00	945.00	1153.00

**COMET MAKE SS-304 / 316 STOPPING PLUG (THREAD -NPT) WITHOUT LOCKNUT**

Sr. No.	Size (NPT)	SS-304		SS-316	
		Weatherproof Unit Price (Rs)	Flameproof Unit Price (Rs)	Weatherproof Unit Price (Rs)	Flameproof Unit Price (Rs)
1	1/2"NPT	185.00	202.00	236.00	258.00
2	3/4"NPT	247.00	273.00	273.00	299.00
3	1"NPT	399.00	428.00	528.00	557.00
4	1.1/4"NPT	616.00	647.00	796.00	857.00
5	1.1/2"NPT	726.00	796.00	915.00	996.00

**COMET MAKE DOUBLE COMPRESSION TYPE FLAMEPROOF IIC SS-304 / SS-316 CABLE GLANDS WITH ET / MM THREAD**

Sr. No.	Code	Thread		SS-304 Unit Price (Rs)	SS-316 Unit Price (Rs)
		ET	MM		
1	CBF2C01SS	3/4"ET	M20	781.00	1032.00
2	CBF2C01S	3/4"ET	M20	913.00	1188.00
3	CBF2C01	3/4"ET	M20	1156.00	1546.00
4	CBF2C01A	1"ET	M25	1213.00	1624.00
5	CBF2C02	1"ET	M25	1577.00	1958.00
6	CBF2C02A	3/4"ET	M20	1654.00	2050.00
7	CBF2C03	1"ET	M25	1619.00	2059.00
8	CBF2C04	1"ET	M25	2429.00	3198.00
9	CBF2C04A	1.1/4"ET	M32	2550.00	3353.00
10	CBF2C05	1.1/4"ET	M32	2762.00	3590.00
11	CBF2C05A	1.1/2"ET	M40	2896.00	3771.00
12	CBF2C06	1.1/2"ET	M40	3470.00	4620.00
13	CBF2C06A	1.1/4"ET	M32	3646.00	4852.00
14	CBF2C07	1.1/2"ET	M40	4629.00	5151.00
15	CBF2C08	2"ET	M50	6067.00	6928.00
16	CBF2C09	2"ET	M50	7274.00	7815.00
17	CBF2C010	2"ET	M50	8594.00	10299.00
18	CBF2C010A	2.5"ET	M63	9024.00	10815.00
19	CBF2C011S	2.5"ET	M63	11899.00	15254.00
20	CBF2C011	2.5"ET	M63	11899.00	15254.00
21	CBF2C012	3"ET	M75	13884.00	17113.00
22	CBF2C013A	3"ET	M75	16225.00	20930.00
23	CBF2C013	3.25"ET	M82	16225.00	20930.00

**COMET MAKE DOUBLE COMPRESSION WEATHERPROOF / FLAMEPROOF ALUMINIUM CABLE GLANDS**

Sr. No	Cable Overall Diameter (mm)	Thread		Weatherproof (CBW)		Flameproof IIA/ IIB (CBF)	
		ET	MM	Code	Unit Price (Rs)	Code	Unit Price (Rs)
1	8.0 - 12.5	3/4"	M20	CBW01SS	318.00	CBF01SS	386.00
2	12.6 - 16.5	3/4"	M20	CBW01S	342.00	CBF01S	408.00
3	16.6 - 18.0	3/4"	M20	CBW01	421.00	CBF01	504.00
4	16.6- 18.0	1"	M25	CBW01A	453.00	CBF01A	544.00
5	18.1 - 20.0	1"	M25	CBW02	534.00	CBF02	639.00
6	18.1 - 20.0	3/4"	M20	CBW02A	534.00	CBF02A	639.00
7	20.1 - 23.0	1"	M25	CBW03	557.00	CBF03	667.00
8	23.1 - 26.0	1"	M25	CBW04	773.00	CBF04	925.00
9	23.1 - 26.0	1-1/4"	M32	CBW04A	851.00	CBF04A	1020.00
10	26.1 - 30.0	1-1/4"	M32	CBW05	1023.00	CBF05	1226.00
11	26.1 - 30.0	1-1/2"	M40	CBW05A	1088.00	CBF05A	1305.00
12	30.1 - 33.0	1-1/2"	M40	CBW06	1317.00	CBF06	1581.00
13	30.1 - 33.0	1-1/4"	M32	CBW06A	1317.00	CBF06A	1581.00
14	33.1 - 37.0	1-1/2"	M40	CBW07	1613.00	CBF07	1935.00
15	37.1 - 41.0	2"	M50	CBW08	1863.00	CBF08	2235.00
16	41.1 - 46.0	2"	M50	CBW09	2498.00	CBF09	2999.00
17	46.1 - 52.0	2"	M50	CBW010	3179.00	CBF010	3815.00
18	46.1 - 52.0	2-1/2"	M63	CBW010A	3416.00	CBF010A	4098.00
19	52.1 - 56.0	2-1/2"	M63	CBW011S	3974.00	CBF011S	4768.00
20	56.1 - 60.0	2-1/2"	M63	CBW011	4542.00	CBF011	5451.00
21	60.1 - 66.0	3"	M75	CBW012	4768.00	CBF012	5723.00

**COMET MAKE NYLON CABLE GLANDS**

Sr . No	Clamping Range (mm)	Size	Rate / Pcs
1	3.0 - 6.5	PG 7	10.00
2	4.0 - 8.0	PG 9	12.00
3	6.0 - 10.0	PG 11	14.00
4	7.0 - 12.0	PG 13.5	15.00
5	10.0 - 14.0	PG 16	21.00
6	13.0 - 18.0	PG 21	26.00
7	14.0 - 21.0	PG 25	35.00
8	18.0 - 25.0	PG 29	53.00
9	24.0 - 32.0	PG 36	97.00
10	30.0 - 38.0	PG 42	117.00
11	37.0 - 44.0	PG 48	157.00
12	42.0 - 55.0	PG 63	275.00
13	3.0 - 6.5	M12	19.00
14	4.0 - 8.0	M16	20.00
15	5.0 - 12.0	M20	26.00
16	10.0 - 18.0	M25	36.00
17	16.0 - 25.0	M32	77.00
18	22.0 - 32.0	M40	141.00
19	30.0 - 36.0	M50	257.00
20	34.0 - 45.0	M63	343.00

**COMET MAKE BRASS PG TYPE CABLE GLANDS DULY NICKEL PLATED**

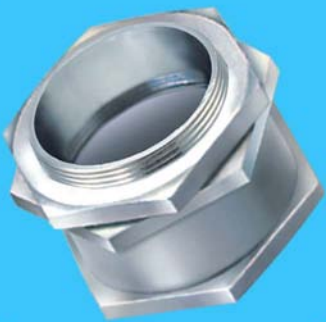
Sr. No.	Clamping Range (mm)	Code	Unit Price (Rs)
1	02 - 6.5	PG 7	46.00
2	03 - 08	PG 9	56.00
3	04 - 10	PG 11	81.00
4	05 - 12	PG 13.5	95.00
5	08 - 14	PG 16	105.00
6	11 - 18	PG 21	168.00
7	16 - 25	PG 29	295.00
8	22 - 32	PG 36	499.00
9	28 - 38	PG 42	770.00
10	34 - 44	PG 48	1045.00
11	02 - 6.5	M 12	47.00
12	03 - 08	M 16	66.00
13	05 - 12	M 20	89.00
14	09 - 16	M 25	140.00
15	12 - 21	M 32	231.00
16	18 - 28	M 40	454.00
17	26 - 36	M 50	887.00
18	36 - 48	M 63	1258.00
19	40 - 53	M 70	1907.00
20	48 - 63	M 75	2212.00
21	53 - 68	M 80	2490.00
22	60 - 75	M 90	2765.00

**Note:**

- For glands other than mentioned above, please refer to us with specific details.
- Single compression glands are offered with 3 MS washers & one rubber ring.
- Brass cable glands are nickel plated as standard.
- For chrome / tin plating charges will be extra.
- This price list supersedes all our earlier price lists.

**TERMS & CONDITIONS:**

1. DISCOUNT : % F.O.R. EX WORKS MUMBAI.
2. GST : EXTRA AS APPLICABLE.
3. PAYMENT :
4. VALIDITY :
5. INSURANCE : AT YOUR A/C.
6. DELIVERY : DEPENDS UPON QUANTITY.





**COMET**<sup>®</sup>



comet@cometgland.com 

www.cometgland.com 

+91 - 22 - 6908 4444 

 Unit No.11 & 12, Vihan Complex,  
Walbhat Road, Goregaon (East),  
Mumbai 400063, INDIA.