

salzer®

# WIRES & CABLES

*Wires for life*





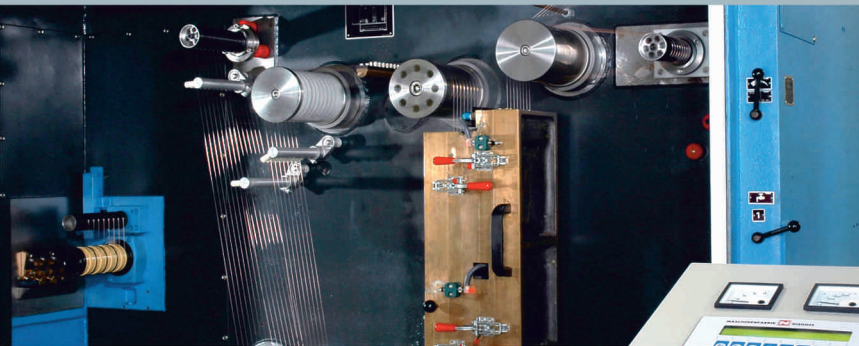
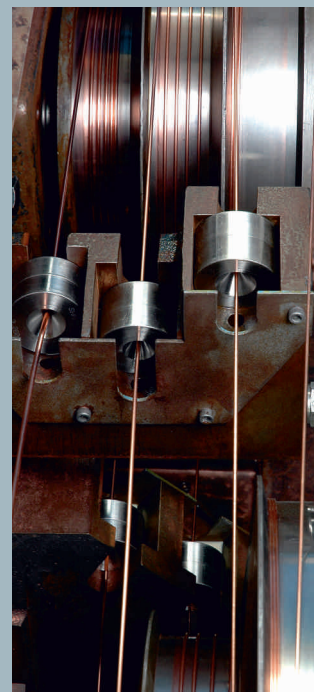
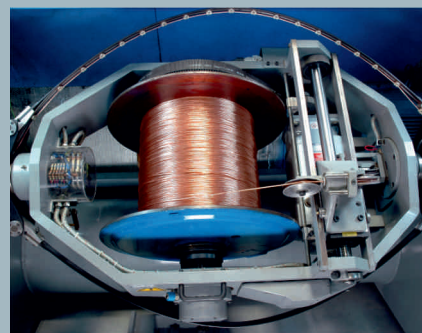
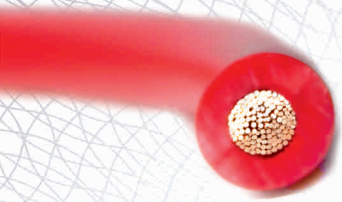
# Quality is the Core

Salzer Wires and Cables division, an ISO 9001 & IATF certified company established in the year 2006, manufactures a wide range of Domestic and Industrial Wires for various applications. Salzer uses 99.997% pure ETP grade copper and high quality flame retardant raw material compounds for superior insulation.

Salzer has a hi-tech manufacturing setup comprising of a fully automated and sophisticated production facility with German machinery for Online Annealing, Uniform Bunching / Insulation with HV testing.

Salzer is equipped with a full-fledged testing laboratory complying with stringent quality benchmarks as per UL, BIS & IEC standards which ensures consistent quality, highly durable and world class wires.

Salzer also specializes in custom-built wires & cables and is a preferred supplier to many leading OEM's and automotive component manufacturers around the world.





## Product Range

### FR Building Wires 1100 V (As per IS 694)

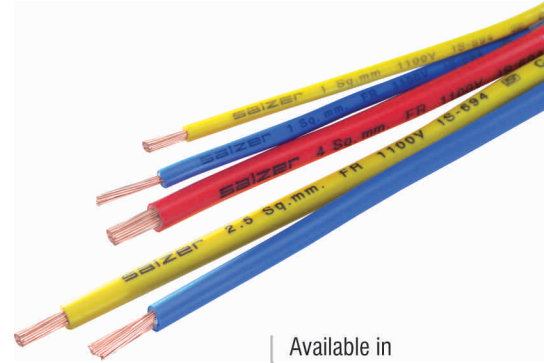
Applications: Houses & Buildings

Construction:

Conductor : Plain Annealed Bare Copper Conductor as per IS : 8130

Insulation : FR - PVC

Colour : Red/Yellow/Blue/Black/Green



Available in  
90 Meters &  
180 Meters length

Nominal Area of Conductor	Nominal Thickness of Insulation	Copper Construction No. of Strands / Strand Dia (Max.)	Approx Overall Diameter of Cable	Current Rating	Max Dc Resistance at 20°C
Sq.mm	mm	mm	mm	Amps	Ohm/Km
0.75	0.60	24/0.2	2.40	7	26.00
1	0.70	14/0.3	2.70	12	18.10
1.5	0.70	22/0.3	3.10	16	12.10
2.5	0.80	36/0.3	3.70	22	7.41
4	0.80	56/0.3	4.10	29	4.95
6	0.80	84/0.3	4.70	37	3.30
10	1.00	80/0.4	6.30	51	1.91
16	1.00	126/0.4	7.30	68	1.21

\*\*Conductor Shall be class-II for 1.0, 1.5 & 2.5 Sqmm & for other size shall be of class V as per IS:8130.

### FRLS Building Wires 1100 V (As per IS 694)

Applications:

- Houses • Factories • Buildings Theatres • Flats • Hospitals
- Apartments • Educational Institutions

Construction:

Conductor : Plain Annealed Bare Copper Conductor as per IS : 8130

Insulation : FRLS - PVC

Colour : Red/Yellow/Blue/Black/Green

Nominal Area of Conductor	Nominal Thickness of Insulation	Copper Construction No. of Strands / Strand Dia (Max.)	Approx Overall Diameter of Cable	Current Rating	Max Dc Resistance at 20°C
Sq.mm	mm	mm	mm	Amps	Ohm/Km
1	0.70	32/0.2	2.70	11	19.50
1.5	0.70	30/0.25	3.10	13	13.30
2.5	0.80	50/0.25	3.70	18	7.980
4	0.80	36/0.3	4.10	24	4.95
6	0.80	56/0.3	4.70	31	3.30

\*\*Conductor Shall be class V as per IS:8130.

Available in  
90 Meters &  
180 Meters length



# PVC Insulated Industrial Cables (Flexible Panel Wires) 1100 V (As per IS 694)

Applications:

● Panels ● Industries ● Machines

Construction:

Conductor : Plain Annealed Bare Copper Conductor as per IS : 8130

Insulation : Unicolour PVC

Colour : Red/Yellow/Blue/Black/Green

Nominal Area of Conductor	Nominal Thickness of Insulation	Copper Construction No. of Strands / Strand Dio (Max.)	Approx Overall Diameter of Cable	Current Rating	Max Dc Resistance at 20°C
Sq.mm	mm	mm	mm	Amps	Ohm/Km
0.5	0.6	16/0.2	2.1	4	39.000
0.75	0.6	24/0.2	2.3	8	26.000
1	0.6	32/0.2	2.45	12	19.50
1.5	0.7	30/0.25	3.00	14	13.30
2.5	0.8	50/0.25	3.60	20	7.980
4	0.8	56/0.3	4.1	26	4.950
6	0.8	84/0.3	4.6	34	3.300
10	1	80/0.4	6	51	1.910
16	1.00	126/0.4	7.20	69	1.210
25	1.20	196/0.4	9.10	89	0.780
35	1.20	276/0.4	10.20	113	0.554
50	1.40	396/0.4	12.30	153	0.386
70	1.40	360/0.5	14.30	238	0.272
95	1.60	484/0.5	17.95	289	0.206
120	1.60	608/0.5	20.00	339	0.161
150	1.80	750/0.5	21.50	394	0.129
185	2.00	925/0.5	23.90	461	0.106

**Note :** Available in 100 Meters length in carton packaging



## PVC Insulated and Sheathed 1100 V Multicore Industrial Cables as per IS:694

Applications:

- Electrical Operated Machines ● Air Conditioners ● Refrigerators ● Motors

Construction:

Conductor : Plain Annealed Bare Copper Conductor as per IS : 8130

Insulation : PVC

Core Colour : 2 Core - Red/Black, 3 Core - Red/Black/Yellow Green, 4 Core - Red/Yellow/Blue/Yellow Green



Nominal Area of Conductor	Nominal Thickness of Insulation	Copper Construction No. of Strands / Strand Dio (Max.)	2 Core		3 Core		4 Core		Max Dc Resistance at 20°C
			Nominal Thickness of Sheath	Approx Overall Dia	Nominal Thickness of Sheath	Approx Overall Dia	Nominal Thickness of Sheath	Approx Overall Dia	
mm <sup>2</sup>	mm	mm	mm	mm	mm	mm	mm	mm	Ohm/Km
0.5	0.6	16/0.2	0.9	6.9	0.9	7.3	0.9	8.0	39.0
0.75	0.6	24/0.2	0.9	7.3	0.9	7.7	0.9	8.4	26.0
1	0.6	32/0.2	0.9	7.6	0.9	8.1	0.9	8.8	19.5
1.5	0.6	30/0.25	0.9	8.9	0.9	9.4	0.9	10.4	13.3
2.5	0.7	50/0.25	1.0	10.3	1.0	10.9	1.0	12.0	7.98
4	0.8	56/0.3	1.0	11.6	1.0	12.4	1.0	13.6	4.95
6	0.8	84/0.3	1.1	13.0	1.2	13.8	1.2	15.5	3.3
10	1.0	80/0.4	1.3	16.5	1.4	17.7	1.4	19.5	1.91
16	1.0	126/0.4	1.4	19.4	1.4	20.6	1.4	23.0	1.21
25	1.2	196/0.4	1.4	23.8	1.5	25.6	1.6	28.5	0.8
35	1.2	276/0.4	1.6	27.2	1.6	29.3	1.7	32.7	0.6

\* Available in 100 Meter Coil Packing

## 3 Core Flat Submersible Cables as per IS 694

Applications:

- Submersible Pumps ● Industrial

Conductor : Plain Annealed Bare Copper Conductor as per IS : 8130

Insulation : PVC

Core Colour : Red/Yellow/Blue



Nominal Area of Conductor	Nominal Thickness of Insulation	Copper Construction No. of Strands / Strand Dio (Max.)	Nominal Thickness of Sheath	Approx Overall Diameter of Cable	Max Dc Resistance at 20°C	Current Carrying Capacity @ 40°C
mm	mm	mm	mm	W x H	Ohms/Km	Ohm/Km
1	0.60	14/0.3	0.90	9.80 x 4.60	18.10	8
1.5	0.60	22/0.3	0.90	11.50 x 5.50	12.10	16
2.5	0.70	36/0.3	1.00	13.50 x 6.50	7.41	22
4	0.80	56/0.3	1.10	15.80 x 7.20	4.95	29
6	0.80	84/0.3	1.10	17.50 x 7.50	3.30	37
10	1.00	80/0.4	1.40	21.40 x 8.80	1.91	51
16	1.00	126/0.4	1.40	24.40 x 9.90	1.21	68
25	1.20	196/0.4	1.50	32.00 x 13.00	0.78	86
35	1.20	276/0.4	1.60	35.50 x 14.50	0.55	110
50	1.40	396/0.4	2.20	46.5 x 19.30	0.38	145

\* Available in 500 Meter Coils & 500/1000 Meter Drum Packaging \*\*Conductor Shall be class-II for 1.0, 1.5 & 2.5 Sqmm & for other size shall be of class V as per IS:8130.



## Pendant Cables

### Application:

For use in Hoist and Pendant applications. Rated for continuous use up to 70°C.

### Construction:

Flexible Stranded Bare Copper Conductors, PVC Insulation, Oil Resistant Yellow/Black PVC Jacket.

Supporting element is Galvanized round steel wire.



Nominal Area of Conductor	No of Strands/ Strand Dia Max.	No of Cores	Nominal Thickness of Insulation	Approx Overall Diameter of Cable	Max Dc Resistance at 20°C
1.5	48/0.2	3	0.7	16.0(8.10)	13.3
1.5	48/0.2	6	0.7	22.5(12.7)	13.3
1.5	48/0.2	10	0.7	25.0(15.10)	13.3
1.5	48/0.2	12	0.7	27.3(15.3)	13.3
1.5	48/0.2	16	0.7	29.0(17.0)	13.3
1.5	48/0.2	18	0.7	30.5(17.5)	13.3
1.5	48/0.2	24	0.7	33.0(20.0)	13.3

## Flat Travelling Cables

### Applications:

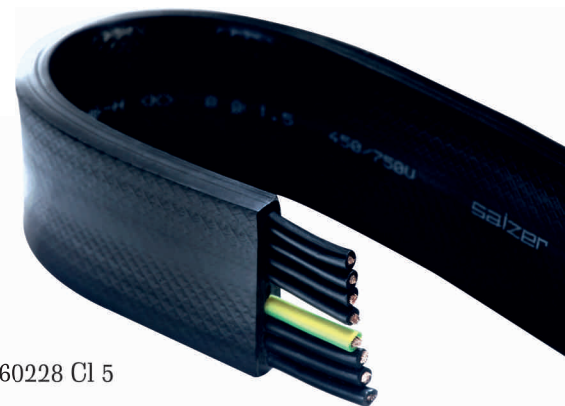
- Elevators ● Lifts

### Construction:

Conductor : Stranded Copper wire According to VDE 0295 Class 5/IEC 60228 Cl 5

Insulation : PVC TI2 according to EN 50363 part 3

Jacket : PVC TM2 according to EN 50363 - 4 -1



Nominal Area of Conductor	No of strands/ Strand Dia	No of Cores	Nominal Thickness of Insulation	Approx Overall Diameter of Cable (W x H)
Sq.mm	mm	mm	Amps	Ohm/Km
0.5	16/0.21	12	0.6	30.0 x 4.0
0.75	24/0.21	12	0.6	34.5 x 4.5
0.5	16/0.21	24	0.6	56.0 x 4.0
0.75	24/0.21	24	0.6	68.0 x 4.5
24C x 0.75+1.5+0.5x4C Travelling Cable				49.0 x 9.0

## Flat Crane Cables

### Applications

Operation of Hoists, handling and conveying equipment under medium mechanical stress conditions.

### Conductor

Multi stranded Copper Conductor as per DIN EN 60228

### Insulation

PVC TI2 according to EN 50363 part 3

Temperature range - 40 deg c to + 70 deg c

### Jacket

PVC TM2 according to EN 50363 - 4 -1

Temperature range - 40 deg c to + 70 deg c



No of Cores/Size	Conductor Construction (No of Strands/Strand dia)	Thickness of Insulation	Overall Diameter of Cable (W x H)	
			Min (mm)	Max (mm)
Sq.mm	Dia in mm	in mm		
4G1.5	80/0.152	0.8	17.0 X 6.0	19.0 X 8.0
4G2.5	135/0.152	0.8	19.0 X 7.0	22.0 X 9.0
4G4	224/0.152	0.9	19.0 X 6.0	22.0 X 8.0
4G6	180/0.2	1.0	26.0 X 8.0	29.0 X 10.0
4G10	196/0.25	1.2	31.0 X 9.0	35.0 X 12.0
4G16	308/0.254	1.4	36.0 X 11.0	40.0 X 14.0
4G25	352/0.3	2.0	41.0 X 12.0	43.0 X 14.0
4G35	476/0.3	1.4	43.5 X 13	46.5 X 15
4G50	396/0.4	1.4	50.5 X 14.5	52.5 X 16.5
8G1.5	80/0.152	0.8	30.0 X 6.0	33.0 X 8.0
8G2.5	135/0.152	0.8	35.0 X 5.0	38.0 X 7.0
12G1.5	80/0.152	0.8	42.0 X 5.0	45.0 X 7.0
12G2.5	135/0.152	0.8	49.5 X 6.5	52.5 X 8.5
13G1.5	80/0.152	0.8	28.0 x 10.0	31.0 x 12.0

\* Available in 500 Meters Drum Packing

## UL Cables

Applications : Internal Wiring of appliances & Machine Tool Wiring (UL-1063)

Standard : Appliance Wiring Material UL 758

Insulation & Sheathing : PVC RoHS

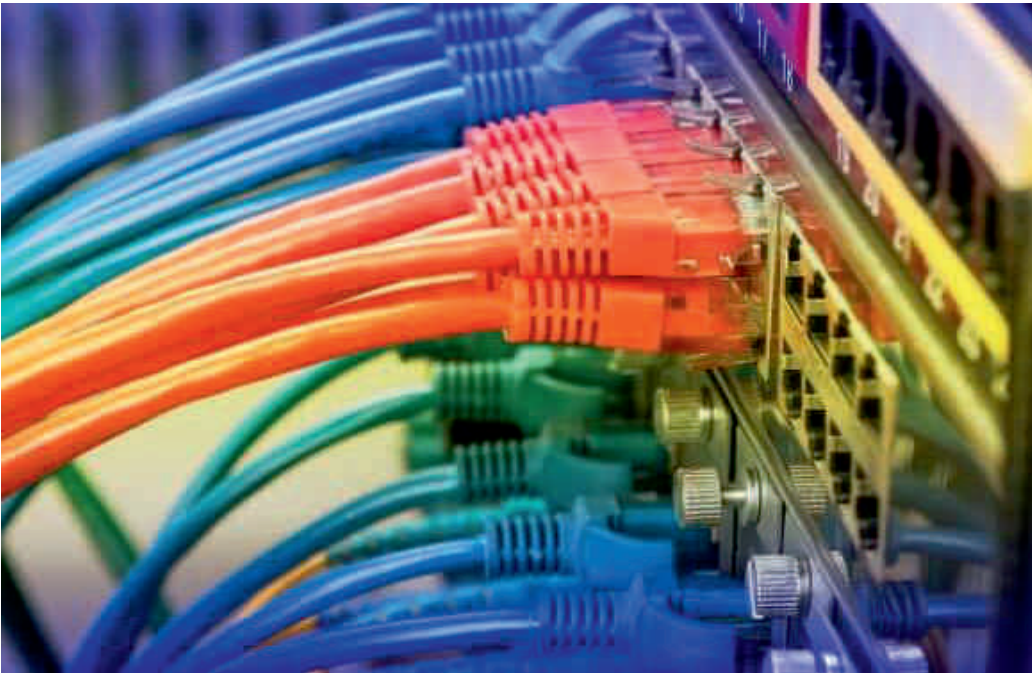
Table of Recognized Styles

Singleconductor, Thermoplastic insulation					Multipleconductor, Thermoplastic insulation		
1007	1032	1284	10107	10531	2129	2464	2587
1015	1275	1569	10269	11343			

\* Available in 91/305 Meters Coil Packing

## Introducing LAN Cables

### From Cat 5 to Cat 7



### Other products

- Cam Operated Rotary Switches
- Load Break Switches
- Terminal Connectors
- General Purpose Relays
- Toroidal Transformers
- Three-phase Transformers, Chokes, Filters & Inductors
- Modular Switches
- Wires & Cables
- Wire Harness
- Motor Control Products
- Limit & Foot Switches
- Control Panels
- Wiring Ducts
- Sensors

## Salzer Electronics Limited

Registered & Corporate Office: Samichettipalayam, Coimbatore - 641 047 India

Salzer Unit IV : Bettadhapuram, Coimbatore - 641 104 | Tel: +91 4254 277100 | Fax: +91 4254 272012

E-mail: salzercables@salzergroup.com