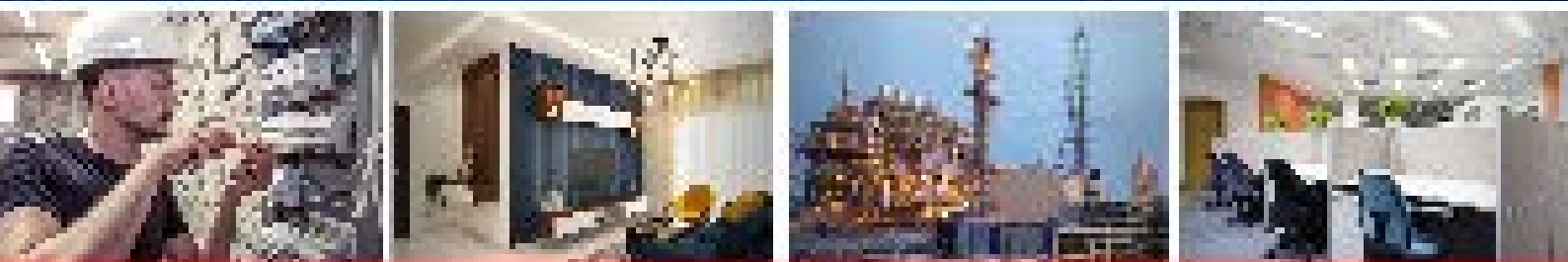


# Technology packed to Protect you



**Price List** Effective 1<sup>st</sup> May, 2024

**Important Note:** This price list represents our standard product price lists unless  
we have specified otherwise within this price sheet document.  
All prices are listed Price exclusive of GST



HPL Electric & Power Limited a leading electrical equipment manufacturer with a strong innovative tradition, constantly striving for new level of excellence, developing innovative products and solutions.

HPL Product range which features high quality electronic energy meters, switchgears, lighting, wires & cables, as well as modular switches and accessories. With years of research and development Introducing our latest work of art.

The breathlessly gorgeous range.



## Contents

Techno N MCB & Isolator .....	1
Techno MCB Changeover Switch, RCCB & RCBO .....	3
RCBO .....	4
Rakshak N MCB, Isolator & ACCL .....	5
Entero Series Distribution Boards .....	6
Belloza Series Distribution Boards .....	12
Duro Series Distribution Boards .....	13
Osaf MCB .....	14
Osaf MCB Isolator .....	16
Osaf MCB Isolator & MCB Changeover Switch .....	17
Osaf MCB Accessories .....	18
Osaf RCCB & RCBO .....	19
Osaf Distribution Boards .....	21
Modular Switches - Edeno .....	22
Modular Switches - Smart .....	24
Tuff - Solo Switches .....	28
Modular Accessories - Smarters .....	29



## Miniature Circuit Breakers 10kA

### Techno 'N' Miniature Circuit Breakers (MCB)

ISI marked 240/415 V 50Hz. Breaking capacity 10KA.

HSN Code: 85362030



Single Pole		B CURVE		C CURVE	
Rating Amps	Item Code	List Price Unit (₹)	Item Code	List Price Unit (₹)	List Price Unit (₹)
0.5-5A	NTSPB0.5-5	----	NTSPC0.5-5	477	
6-32A	NTSPB6-32	261	NTSPC6-32	270	
40A	NTSPB40	621	NTSPC40	630	
50-63A	NTSPB50-63	684	NTSPC50-63	684	



Single Pole + N		B CURVE		C CURVE	
Rating Amps	Item Code	List Price Unit (₹)	Item Code	List Price Unit (₹)	List Price Unit (₹)
0.5-5A	NTSPNB0.5-5	----	NTSPNC0.5-5	1152	
6-32A	NTSPNB6-32	846	NTSPNC6-32	828	
40A	NTSPNB40	1278	NTSPNC40	1278	
50-63A	NTSPNB50-63	1431	NTSPNC50-63	1440	



Double Pole		B CURVE		C CURVE	
Rating Amps	Item Code	List Price Unit (₹)	Item Code	List Price Unit (₹)	List Price Unit (₹)
0.5-5A	NTDPB0.5-5	----	NTDPC0.5-5	1269	
6-32A	NTDPB6-32	891	NTDPC6-32	909	
40A	NTDPB40	1350	NTDPC40	1404	
50-63A	NTDPB50-63	1486	NTDPC50-63	1566	



Three Pole		B CURVE		C CURVE	
Rating Amps	Item Code	List Price Unit (₹)	Item Code	List Price Unit (₹)	List Price Unit (₹)
0.5-5A	NTTPB0.5-5	----	NTTPC0.5-5	1683	
6-32A	NTTPB6-32	----	NTTPC6-32	1458	
40A	NTTPB40	----	NTTPC40	2061	
50-63A	NTTPB50-63	----	NTTPC50-63	2385	



Three Pole + N		B CURVE		C CURVE	
Rating Amps	Item Code	List Price Unit (₹)	Item Code	List Price Unit (₹)	List Price Unit (₹)
0.5-5A	NTTPNB0.5-5	----	NTTPNC0.5-5	2205	
6-32A	NTTPNB6-32	----	NTTPNC6-32	1908	
40A	NTTPNB40	----	NTTPNC40	2430	
50-63A	NTTPNB50-63	----	NTTPNC50-63	2565	



Four Pole		B CURVE		C CURVE	
Rating Amps	Item Code	List Price Unit (₹)	Item Code	List Price Unit (₹)	List Price Unit (₹)
0.5-5A	NTFPB0.5-5	----	NTFPC0.5-5	2412	
6-32A	NTFPB6-32	----	NTFPC6-32	1980	
40A	NTFPB40	----	NTFPC40	2691	
50-63A	NTFPB50-63	----	NTFPC50-63	2862	

\*D curve price on request.



## Miniature Circuit Breakers 10kA

### Techno 'N' Isolator

HSN Code: 85362030



Double Pole		Three Pole		Four Pole	
Rating Amps.	Item Code	List Price Unit (₹)	Item Code	List Price Unit (₹)	List Price Unit (₹)
40A	NTIDP40	576	NTITP40	1134	NTIFP40 1287
63A	NTIDP63	729	NTITP63	1215	NTIFP63 1386
80A	TIDP80	873	TITP80	1449	TIFP80 1701
100A	TIDP100	891	TITP100	1467	TIFP100 1701
125A	TIDP125	945	TITP125	1548	TIFP125 1854

### DC MCB upto 220 VDC

HSN Code: 85362030



Single Pole DC		Double Pole DC	
Rating Amps.	Item Code	List Price Unit (₹)	List Price Unit (₹)
0.5-5 Amp	NTSPDCC0.5-5	558	NTDPDCC0.5-5 1341
SP 06 - 32Amp	NTSPDCC06-32	531	NTDPDCC06-32 1035
SP 40 Amp	NTSPDCC40	711	NTDPDCC40 1413
SP 50 - 63 Amp	NTSPDCC50-63	810	NTDPDCC50-63 1656

### Higher Rating MCB

Ref. Std. IEC 60947-2 240/415V 50Hz  
Breaking Capacity 10KA

HSN Code: 85362030



Item Code	Description	List Price Unit (₹)
NTSPC80	NEW TECHNO MCB C CURVE SP 80 AMP	2511
NTSPC100	NEW TECHNO MCB C CURVE SP 100 AMP	2781
NTSPC125	NEW TECHNO MCB C CURVE SP 125 AMP	3366
NTDPC80	NEW TECHNO MCB C CURVE DP 80 AMP	5814
NTDPC100	NEW TECHNO MCB C CURVE DP 100 AMP	6246
NTDPC125	NEW TECHNO MCB C CURVE DP 125 AMP	6831
NTTPC80	NEW TECHNO MCB C CURVE TP 80 AMP	8460
NTTPC100	NEW TECHNO MCB C CURVE TP 100 AMP	9126
NTTPC125	NEW TECHNO MCB C CURVE TP 125 AMP	9909
NTFPC80	NEW TECHNO MCB C CURVE FP 80 AMP	11133
NTFPC100	NEW TECHNO MCB C CURVE FP 100 AMP	11484
NTFPC125	NEW TECHNO MCB C CURVE FP 125 AMP	13032



Technology packed to  
Protect your home



**Techno MCB - Changeover Switch**

MCB Changeover switch conforms to IS : 13947 / part III & IEC 60947.

MCB Changeover switch provides changeover from Electricity Board supply to Generator Supply & Vice-Versa.

HSN Code: 85362030



Double Pole			Four Pole	
Rating Amps	Item Code	List Price Unit (₹)	Item Code	List Price Unit (₹)
25	TCODP25	1548	TCOFP25	2907
40	TCODP40	2079	TCOFP40	3915
63	TCODP63	2412	TCOFP63	4581

**Residual Current Circuit Breakers (RCCB)**

HPL Residual Current Circuit Breakers conforms to IEC/EN: 61008 & IS: 12640, 240/415V, 50Hz with 10kA short circuit withstand capacity.

HSN Code: 85362040



Double Pole			Four Pole	
Rating Amps	Item Code	List Price Unit (₹)	Item Code	List Price Unit (₹)
25A	25DP30mA	3123	25FP30mA	3960
25A	25DP100mA	3213	25FP100mA	4032
25A	25DP300mA	3213	25FP300mA	4032
40A	40DP30mA	3204	40FP30mA	3969
40A	40DP100mA	3258	40FP100mA	4041
40A	40DP300mA	3258	40FP300mA	4041
63A	63DP30mA	4275	63FP30mA	4383
63A	63DP100mA	4302	63FP100mA	4428
63A	63DP300mA	4302	63FP300mA	4428
80A	80DP30mA	7605	80FP30mA	8127
80A	80DP100mA	7605	80FP100mA	8253
80A	80DP300mA	7605	80FP300mA	8253
100A	100DP30mA	8605	100FP30mA	10476
100A	100DP100mA	8605	100FP100mA	10476
100A	100DP300mA	8605	100FP300mA	10476

**Residual Current Operated Circuit Breakers (RCBO)**

Electro Magnetic Type AC - 10kA with Single pole Neutral - 'C' Curve

HSN Code: 85362040



SPN			
Sensitivity	Rating Amps	Item Code	List Price Unit (₹)
30mA	16A	HRCBOSN16-30	3537
	25A	HRCBOSN25-30	3537
	32A	HRCBOSN32-30	3879
	40A	HRCBOSN40-30	4212
100mA	16A	HRCBOSN16-100	3537
	25A	HRCBOSN25-100	3537
	32A	HRCBOSN32-100	3879
300mA	16A	HRCBOSN16-300	3537
	25A	HRCBOSN25-300	3537
	32A	HRCBOSN32-300	3879
	40A	HRCBOSN40-300	4212

**Residual Current Operated Circuit Breakers (RCBO)**

Electronic Type AC - 10kA with Double & Four pole - 'C' Curve

HSN Code: 85362030



Double Pole			Four Pole		
Sensitivity	Rating Amps	Item Code	List Price Unit (₹)	Item Code	List Price Unit (₹)
30mA	6A	HRCBODPCE6-30	4725	HRCBOFPCE6-30	7938
	10A	HRCBODPCE10-30	4725	HRCBOFPCE10-30	7938
	16A	HRCBODPCE16-30	4725	HRCBOFPCE16-30	7938
	20A	HRCBODPCE20-30	4725	HRCBOFPCE20-30	7938
	25A	HRCBODPCE25-30	4725	HRCBOFPCE25-30	7938
	32A	HRCBODPCE32-30	4725	HRCBOFPCE32-30	7938
	40A	HRCBODPCE40-30	5004	HRCBOFPCE40-30	8316
	50A	HRCBODPCE50-30	5202	HRCBOFPCE50-30	8604
100mA	6A	HRCBODPCE6-100	4725	HRCBOFPCE6-100	7938
	10A	HRCBODPCE10-100	4725	HRCBOFPCE10-100	7938
	16A	HRCBODPCE16-100	4725	HRCBOFPCE16-100	7938
	20A	HRCBODPCE20-100	4725	HRCBOFPCE20-100	7938
	25A	HRCBODPCE25-100	4725	HRCBOFPCE25-100	7938
	32A	HRCBODPCE32-100	4725	HRCBOFPCE32-100	7938
	40A	HRCBODPCE40-100	5004	HRCBOFPCE40-100	8316
	50A	HRCBODPCE50-100	5202	HRCBOFPCE50-100	8604
300mA	6A	HRCBODPCE6-300	4725	HRCBOFPCE6-300	7938
	10A	HRCBODPCE10-300	4725	HRCBOFPCE10-300	7938
	16A	HRCBODPCE16-300	4725	HRCBOFPCE16-300	7938
	20A	HRCBODPCE20-300	4725	HRCBOFPCE20-300	7938
	25A	HRCBODPCE25-300	4725	HRCBOFPCE25-300	7938
	32A	HRCBODPCE32-300	4725	HRCBOFPCE32-300	7938
	40A	HRCBODPCE40-300	5004	HRCBOFPCE40-300	8316
	50A	HRCBODPCE50-300	5202	HRCBOFPCE50-300	8604
63A	HRCBODPCE63-300	5202	HRCBOFPCE63-300	8604	

**MCB Accessories**

(Factory fitted only)

**Auxiliary Contact**

Description	Item Code	List Price Unit (₹)
Aux-Cont 1NO+1NC	NTAUX1NO+1NC	603
Shunt trip 230V/415V AC	SHUNTTRIP	801
Under Voltage 230V / 415 V AC	----	684



## Miniature Circuit Breakers 6kA

### Rakshak N Miniature Circuit Breakers (MCB)

Ref. Standard IEC 60898-1 ISI Marked, 240/415 V 50Hz, Tested at CPRI. Breaking capacity 6 KA.

HSN Code: 85362030



B CURVE			C CURVE	
Rating Amps.	Item Code	List Price Unit (₹)	Item Code	List Price Unit (₹)
<b>Single Pole</b>				
6-32A	NRSPB6-32	216	NRSPC6-32	225
40A	NRSPB40	468	NRSPC40	495
50-63A	NRSPB50-63	522	NRSPC50-63	594
<b>Single Pole - N</b>				
6-32A	NRSPNB6-32	720	NRSPNC6-32	720
40A	NRSPNB40	1017	NRSPNC40	1026
50-63A	NRSPNB50-63	1125	NRSPNC50-63	1278
<b>Double Pole</b>				
6-32A	NRDPB6-32	756	NRDPC6-32	765
40A	NRDPB40	1071	NRDPC40	1098
50-63A	NRDPB50-63	1272	NRDPC50-63	1278
<b>Three Pole</b>				
6-32A	NRTPB6-32	----	NRTPC6-32	1260
40A	NRTPB40	----	NRTPC40	1755
50-63A	NRTPB50-63	----	NRTPC50-63	1944
<b>Three Pole - N</b>				
6-32A	NRTPNB6-32	----	NRTPC6-32	1647
40A	NRTPNB40	----	NRTPC40	2205
50-63A	NRTPNB50-63	----	NRTPC50-63	2322
<b>Four Pole</b>				
6-32A	NRFPB6-32	----	NRFPC6-32	1710
40A	NRFPB40	----	NRFPC40	2223
50-63A	NRFPB50-63	----	NRFPC50-63	2502

### Rakshak N MCB Isolator



Double Pole			Three Pole		Four Pole	
Rating Amps.	Item Code	List Price Unit (₹)	Item Code	List Price Unit (₹)	Item Code	List Price Unit (₹)
40A	NRIDP40	522	NRITP40	963	NRIFP40	1161
63A	NRIDP63	648	NRITP63	1098	NRIFP63	1215

### ACCL



HSN Code: 85362030

Rating Amps	Item Code	Description	List Price Unit (₹)
0.6A	HACCLSN30-0.6	ACO WITH CURRENT LIMITER -0.6A	1,818
1.5A	HACCLSN30-1.5	ACO WITH CURRENT LIMITER -1.5A	1,818
2.5A	HACCLSN30-2.5	ACO WITH CURRENT LIMITER -2.5A	1,818
3.0A	HACCLSN30-3.0	ACO WITH CURRENT LIMITER -3.0A	1,818
4.0A	HACCLSN30-4.0	ACO WITH CURRENT LIMITER -4.0A	1,818
5.0A	HACCLSN30-5.0	ACO WITH CURRENT LIMITER -5.0A	1,818
6.0A	HACCLSN30-6.0	ACO WITH CURRENT LIMITER -6.0A	1,818
8.0A	HACCLSN30-8.0	ACO WITH CURRENT LIMITER -8.0A	1,818
10A	HACCLSN30-10	ACO WITH CURRENT LIMITER -10A	1,818

## ENTERO Series Distribution Board

## Distribution Boards

### EX Range - Single Door Distribution Board

MCB Distribution Boards Sheet steel, Powder coated, suitable for MCB's, fitted with Bus Bar, Neutral Link, Earth Bar and Din Rail (Conforms to IS : 13032 - 1991).

HSN Code: 85371000



Single Phase & Neutral			Three Phase & Neutral	
Rating Amps	Item Code	List Price Unit (₹)	Item Code	List Price Unit (₹)
4	MEXDBSD04	1026	MEXDBTD04	3096
6	MEXDBSD06	1152	MEXDBTD06	3726
8	MEXDBSD08	1152	MEXDBTD08	4419
12	MEXDBSD12	1737	MEXDBTD12	5850
16	MEXDBSD16	2124	----	----

### EX Range - Double Door IP-43 Projects Distribution Board

Double Door MCB Distribution Boards Sheet steel, Powder coated, suitable for MCB's, fitted with Bus Bar, Neutral Link, Earth Bar and Din Rail (Conforms to IS : 13032 - 1991).



Three Phase & Neutral		
No. of Ways	Item Code	List Price Unit (₹)
4	MDBECOTDD04	3942
6	MDBECOTDD06	4761
8	MDBECOTDD08	5850
12	MDBECOTDD12	7407

### DX Range - Double Door IP-43 Distribution Board

Double Door MCB Distribution Boards Sheet steel, Powder coated, suitable for MCB's, fitted with Bus Bar, Neutral Link, Earth Bar and Din Rail (Conforms to IS : 13032 - 1991).



Single Phase & Neutral						
Rating Amps	Item Code	List Price Unit (₹)	ITEM CODE (1.2MM)	List Price Unit (₹)	ITEM CODE (1.6MM)	List Price Unit (₹)
4	MDBDD04	1647	MDBDD04-1.2	2205	MDBDD04DX	2862
6	MDBDD06	1836	MDBDD06-1.2	2457	MDBDD06DX	3184
8	MDBDD08	2007	MDBDD08-1.2	2601	MDBDD08DX	3384
10	MDBDD10	2236	MDBDD10-1.2	3033	MDBDD10DX	3951
12	MDBDD12	2574	MDBDD12-1.2	3438	MDBDD12DX	4464
16	MDBDD16	3231	MDBDD16-1.2	4329	MDBDD16DX	5625

Three Phase & Neutral						
Rating Amps	Item Code	List Price Unit (₹)	ITEM CODE (1.2MM)	List Price Unit (₹)	ITEM CODE (1.6MM)	List Price Unit (₹)
4	MDBTDD04	4275	MDBTDD04-1.2	4707	MDBTDD04DX	6417
6	MDBTDD06	5040	MDBTDD06-1.2	5805	MDBTDD06DX	7695
8	MDBTDD08	6255	MDBTDD08-1.2	7182	MDBTDD08DX	9540
12	MDBTDD12	8847	MDBTDD12-1.2	10170	MDBTDD12DX	13482

Note: Double Door with Acrylic Cover Price On Request

# ENTERO Series Distribution Board

## Distribution Boards

### IP-43 Vertical Distribution Board

Multiphase outgoing suitable for mounting HPL MCCB as incomer.

HSN Code: 85371000



Double Door 160 TAB1 (without MCCB)			Double Door 250 TAB 1 (without MCCB)	
No. of Ways	Item Code	List Price Unit (₹)	Item Code	List Price Unit (₹)
4	MDBVDD04160TAB	12906	MDBVDD04-250TAB	18927
6	MDBVDD06160TAB	13896	MDBVDD06-250TAB	20367
8	MDBVDD08160TAB	14589	MDBVDD08-250TAB	21402
12	MDBVDD12160TAB	17298	MDBVDD12-250TAB	25362

Vertical Double Door TP & N Distribution Board with TAB-1 MCCB

No. of Ways	Item Code	MCCB	List Price Unit (₹)
4	MDBVDD04160TAB100A	TP 100A MCCB	16974
4	MDBVDD04160TAB125A	TP 125A MCCB	17937
4	MDBVDD04160TAB160A	TP 160A MCCB	20826
6	MDBVDD06160TAB100A	TP 100A MCCB	17946
6	MDBVDD06160TAB125A	TP 125A MCCB	18900
6	MDBVDD06160TAB160A	TP 160A MCCB	21780
8	MDBVDD08160TAB100A	TP 100A MCCB	18630
8	MDBVDD08160TAB125A	TP 125A MCCB	19998
8	MDBVDD08160TAB160A	TP 160A MCCB	22932
12	MDBVDD12160TAB100A	TP 100A MCCB	21717
12	MDBVDD12160TAB125A	TP 125A MCCB	22698
12	MDBVDD12160TAB160A	TP 160A MCCB	26730



Suitable for 63 & 100 Amp isolator.

Description	Item Code	List Price Unit (₹)
MODERN 04 WAY TPN VERT D/D W/O ISO.	MDBVDD04	10152
MODERN 06 WAY TPN VERT D/D W/O ISO.	MDBVDD06	11637
MODERN 08 WAY TPN VERT D/D W/O ISO.	MDBVDD08	12996
MODERN 12 WAY VERT DB D/D W/O ISO.	MDBVDD12	17010

IP-43 Vertical Distribution Board For Multiphase Outgoings fitted with 4 Pole Techno Isolator as incomer.



Fitted with 100A 4P Isolator Double Door			Fitted with 63A 4P Isolator Double Door	
No. of Ways	Item Code	List Price Unit (₹)	Item Code	List Price Unit (₹)
4	MDBVDD04-ISO	11007	MDBVDD04-ISO63	10800
6	MDBVDD06-ISO	12510	MDBVDD06-ISO63	12402
8	MDBVDD08-ISO	13824	MDBVDD08-ISO63	13707
12	MDBVDD12-ISO	17847	MDBVDD12-ISO63	17676

### MCB Enclosures Fitted with DIN Rail



Plastic Enclosure			Sheet Steel Enclosure	
No. of Ways	Item Code	List Price Unit (₹)	Item Code	List Price Unit (₹)
2	DBPE01/02	207	MDBSS01/02	405
4	DBPE03/04	306	MDBSS03/04	450

# ENTERO Series Distribution Board

## Distribution Boards

### Tier Distribution Board

Single / Double / Tripple / four rows, sheet steel powder coated Double door Distribution board, Fitted with Bus-bar, Neutral bar, Earth bar suitable for SP/MP outgoing.

HSN Code: 85371000



No. of Ways	Single Row		Double Row		Triple Row		Four Row	
	Item Code	List Price Unit (₹)	Item Code	List Price Unit (₹)	Item Code	List Price Unit (₹)	Item Code	List Price Unit (₹)
12	MDBDDRS12	2232	MDBDDRD12	3393	MDBDDRT12	5697	MDBDDRF12	9792
16	MDBDDRS16	2772	MDBDDRD16	4167	MDBDDRT16	6876	MDBDDRF16	11682

### Cable end Box - Horizontal



No. of Ways	Single Door				Double Door			
	Item Code	List Price Unit (₹)	Item Code	List Price Unit (₹)	Item Code	List Price Unit (₹)	Item Code	List Price Unit (₹)
Single Phase & Neutral		Three Phase & Neutral		Single Phase & Neutral		Three Phase & Neutral		
4	MCBSD04	396	MCBTD04	856	MCBDD04	459	MCBTD04	856
6	MCBSD06	441	MCBTD06	963	MCBDD06	585	MCBTD06	1053
8	MCBSD08	549	MCBTD08	1161	MCBDD08	639	MCBTD08	1278
12	MCBSD12	657	MCBTD12	1539	MCBDD12	783	MCBTD12	1756
16	MCBSD16	774	-----	-----	MCBDD16	1017	-----	-----

### Cable end Box - Vertical



No. of Ways	Single Door		Double Door	
	Item Code	List Price Unit (₹)	Item Code	List Price Unit (₹)
4	MCBVS04	1206	MCBVDD04	1458
8	MCBVS08	1206	MCBVDD08	1458
12	MCBVS12	1206	MCBVDD12	1458

### HPL - Phase Selector Distribution Board

HPL Phase Selector DB in Sheet Steel Enclosure, Power coated has one compartment with 3 Nos HPL Elektra Selector Switches and indicating light duly wired suitable for use on 240/415V 50 Hz supply.



No. of Ways	Item Code	List Price Unit (₹)
40 Amp 1P + 3 way + OFF	MHPSDB-40913	5652
63 Amp 1P + 3way + OFF	MHPSDB-63913	7695

# ENTERO Series Distribution Board

# Distribution Boards

## HPL - Horizontal Phase Selector Distribution Board

HSN Code: 85371000

HPL Horizontal type Phase Selector DB in Sheet Steel Enclosure powder coated. Has two separate compartments for MCB's and Phase selector switches with indicating lights, fitted with Bus Bar, Neutral Link, Earth Bar, DB consists of 3 Nos HPL-Elektra selector switches with indicating lights duly wired suitable for use on 240 / 415V, 50 Hz supply & provision for 4P, 63A MCB / Isolator as incomer.

Double Door



No. of Ways	Item Code	List Price Unit (₹)
4 way DB with 40A Selector Switch	MPSDBDD440	10746
6 way DB with 40A Selector Switch	MPSDBDD640	11691
8 way DB with 40A Selector Switch	MPSDBDD840	12231
4 way DB with 63A Selector Switch	MPSDBDD463	11574
6 way DB with 63A Selector Switch	MPSDBDD663	12510
8 way DB with 63A Selector Switch	MPSDBDD863	13032

## VERTICAL Phase Selector



No. of Ways	Item Code	List Price Unit (₹)
4	MPSDBDD440V	11268
4	MPSDBDD460V	12132
6	MPSDBDD640V	12258
6	MPSDBDD660V	13122
8	MPSDBDD840V	12816
8	MPSDBDD863V	13653

## HPL - 7 Segment Distribution Board



Double Door

No. of Ways	Item Code	List Price Unit (₹)
4 way	MDBSSEG04	11367
6 way	MDBSSEG06	12870
8 way	MDBSSEG08	14796
12 way	MDBSSEG12	18495

## Per Phase Isolation Double Door Distribution Board

HSN Code: 85371000



No. of Ways	Item Code	List Price Unit (₹)
2+8	MDBPPI08	12942
2+12	MDBPPI12	15273

## Horizontal PPI Double Door Distribution Board

HSN Code: 85371000

No. of Ways	Item Code	List Price Unit (₹)
2+2	MDBTDD04HPPI	5202
2+4	MDBTDD06HPPI	6210
2+6	MDBTDD08HPPI	8415
2+10	MDBTDD12HPPI	9981

# ENTERO Series Distribution Board

# Distribution Boards

## Consumer Unit Distribution Board

Single Phase - With / without plastic cover Consumer units, sheet steel, powder coated, fitted with bus bar, neutral link, earth bar and din rail.



No. of Ways	Item Code	List Price Unit (₹)
2+4	MDBCUSPWO04	1638
2+6	MDBCUSPWO06	1737
2+8	MDBCUSPWO08	1980
2+10	MDBCUSPWO10	2025
2+12	MDBCUSPWO12	2268

## TV / TEL Socket Distribution Board

Double door sheet steel powder coated Distribution system, fitted with Bus-bar, Neutral bar, Earth bar having telephone socket & TV co-axial socket suitable for apartments.



No. of Ways	Item Code	List Price Unit (₹)
2+6	MDBDDTVTL2+06	5490
2+8	MDBDDTVTL2+08	5634
2+10	MDBDDTVTL2+10	6192
2+12	MDBDDTVTL2+12	6291
9+9	MDBDDTVTL9+9	6345
12+12	MDBDDTVTL12+12	7416

## Pre-Wired Distribution Board

HSN Code: 85371000

Double door sheet steel powder coated distribution system in 1.6mm and 1.2mm sheet steel thickness, fitted with Bus-bar, Terminal blocks for incoming / outgoing phase, Neutral & Earthing duly wired with provision of Isolator / RCCB / MCB at incoming & SP outgoing.



No. of Ways	Item Code	1.6 mm		1.2 mm	
		List Price Unit (₹)	Item Code	List Price Unit (₹)	Item Code
2+4	MDBPWDDSPD04	5976	MDBPWDDSP04	5220	
2+6	MDBPWDDSPD06	6804	MDBPWDDSP06	5616	
2+8	MDBPWDDSPD08	7695	MDBPWDDSP08	6345	
2+10	MDBPWDDSPD10	8595	MDBPWDDSP10	7407	
2+12	MDBPWDDSPD12	9603	MDBPWDDSP12	8190	
8+12	MDBPWDDTPD04	14367	MDBPWDDTP04	12807	
8+18	MDBPWDDTPD06	17577	MDBPWDDTP06	14337	
8+24	MDBPWDDTPD08	20763	MDBPWDDTP08	16974	
8+36	MDBPWDDTPD12	27342	MDBPWDDTP12	22293	

## Distribution Boards

## ENTERO Series Distribution Board

### Plug & Socket Enclosure with MCB

Enclosure fitted with Techno (10KA)



Rating Amps.	Item Code SP & N	List Price Unit (₹)	Item Code TP & N	List Price Unit (₹)
20A	MDBSPMT20	1467	MDBTPMT20	3780
30A	----	----	MDBTPMT30	5004

### Plug & Socket Enclosure with MCB

Enclosure fitted with Rakshak (6KA)



Rating Amps.	Item Code SP & N	List Price Unit (₹)	Item Code TP & N	List Price Unit (₹)
20A	MDBSPMR20	1314	MDBTPMR20	3330
30A	----	----	MDBTPMR30	4536

### Plug & Socket Enclosure

Enclosure with 1 & 2 pole and earth Metal Plug & Socket for incorporating SP & TPN MCB (Without MCB).

HSN Code: 85381090



Rating Amps.	Item Code SP & N	List Price Unit (₹)	Item Code TP & N	List Price Unit (₹)
20A	MDBSP20	1170	MDBTP20	2340
30A	----	----	MDBTP30	3267

### Rotary Switches

HSN Code: 85381090



Rating Amps.	Item Code SP & N	List Price Unit (₹)
40A	MDBROTARY40A	792
63A	MDBROTARY63A	963

### Metal Clad Plug & Sockets



Cat No.	Rating	Plug		Socket	
		Item Code	List Price Unit (₹)	Item Code	List Price Unit (₹)
2 Pole + Earth 250V	20A	HP2P20	270	HP2S20	270
3 Pole + Earth 440V	20A	HP3P20	333	HP3S20	333
3 Pole + Earth 440V	30A	HP3P30	576	HP3S30	576

\*Price of Spares, DIN Rails, Copper Bus bar on request

## Distribution Boards

## BELLOZA Series Distribution Board

### SP & N Double Door Distribution Board

Single Phase and Neutral Sheet Steel, Powder Coated Distribution system fitted single cover with Magnetic Lock for protection of MCB's fitted with Bus Bar, Neutral Link, Earthing Bar and Din Rail. Suitable for use on 240/415V, 50Hz supply.



No. of Ways	Item Code	List Price Unit (₹)
4	BEDBDD04	1764
6	BEDBDD06	1962
8	BEDBDD08	2142
10	BEDBDD10	2430
12	BEDBDD12	2740
16	BEDBDD16	3465

### TP & N Double Door Distribution Board

Three Phase and Neutral Sheet Steel, Powder Coated Distribution system fitted single cover with Magnetic Lock for protection of MCB's fitted with Bus Bar, Neutral Link, Earthing Bar and Din Rail. Suitable for use on 240/415V, 50Hz supply.



No. of Ways	Item Code	List Price Unit (₹)
4	BEDBTDD04	4563
6	BEDBTDD06	5391
8	BEDBTDD08	6705
12	BEDBTDD12	9468

## BELLOZA Series Distribution Board



### Features

- Suitable for flush mounting & surface mounting.
- Insulated Bus Bar rated upto 200A.
- Safe Neutral link covered with FR Housing.
- Provided Door Earthing.
- Unique feature of PAN Assembly for ease of installation. This is an advantage during maintenance.
- All the MCB's mounted inside the DB can be take out in just one shot by the easy removal of the four screws.
- Special care of Cable Management.
- Adequate wiring space has been provided below the Pan Assembly for proper termination and safety.
- Two finger holes to lift the plate have been duly plugged for making the board dust free and safe.
- Level marks for providing indication for fitment in wall.
- Cable knockouts on all sides for speed of installation.
- White Texture (SM) HMT 1609 with new look & new innovative DB.
- Supplied with masking sheet to protect components from cement during plastering.
- As per IP-43 Protection.

# DURO Series Distribution Board

## SP & N Double Door Distribution Board

Single Phase and Neutral Sheet Steel, Powder Coated Double Door Distribution system fitted with two cover- one screwed cover for incoming and out going for MCB and second for protection of MCB's fitted with Bus Bar, Neutral Link, Earthing Bar and Din Rail. Suitable for use on 240/415V, 50Hz supply.



No. of Ways	Item Code	List Price Unit (₹)
4	DUDBDD04	1566
6	DUDBDD06	1746
8	DUDBDD08	1908
10	DUDBDD10	2160
12	DUDBDD12	2448
16	DUDBDD16	3087

## TP & N Double Door Distribution Board

Three Phase and Neutral Sheet Steel, Powder Coated Double Door Distribution system fitted with two cover- one screwed cover for incoming and out going for MCB and second for protection of MCB's fitted with Bus Bar, Neutral Link, Earthing Bar and Din Rail. Suitable for use on 240/415V, 50Hz supply.



No. of Ways	Item Code	List Price Unit (₹)
4	DUDBTDD04	4059
6	DUDBTDD06	4797
8	DUDBTDD08	5940

# DURO Series Distribution Board

### Features

- Suitable for flush mounting & surface mounting.
- Insulated Bus Bar rated upto 200A.
- With Neutral & Earthing link.
- Special care of Cable Management.
- Matt finish (HYY-0527 ss White) with new look.
- Cable knockouts on all sides for speed of installation.
- Supplied with masking sheet to protect components from cement during plastering.
- As per IP-43 Protection.



## Osäfe Miniature Circuit Breakers (MCB)

Ref. Standard IEC 60898-1 ISI Marked, 240/415 V 50Hz, Tested at CPRI. Breaking capacity 10 KA.

HSN Code: 85362030



### Single Pole B Curve

Description	Item Code	Packing Qty.	List Price Unit (₹)
Osäfe MCB SP B Curve 06-32 Amp	O1B6-32	12	324
Osäfe MCB SP B Curve 40 Amp	O1B40	12	711
Osäfe MCB SP B Curve 50 Amp	O1B50	12	810
Osäfe MCB SP B Curve 63 Amp	O1B63	12	810



### Single Pole Neutral B Curve

Description	Item Code	Packing Qty.	List Price Unit (₹)
Osäfe MCB SPN B Curve 06-32 Amp	O1NB6-32	6	963
Osäfe MCB SPN B Curve 40 Amp	O1NB40	6	1440
Osäfe MCB SPN B Curve 50 Amp	O1NB50	6	1665
Osäfe MCB SPN B Curve 63 Amp	O1NB63	6	1665



### Double Pole B Curve

Description	Item Code	Packing Qty.	List Price Unit (₹)
Osäfe MCB DP B Curve 06-32 Amp	O2B6-32	6	1053
Osäfe MCB DP B Curve 40 Amp	O2B40	6	1557
Osäfe MCB DP B Curve 50 Amp	O2B50	6	1737
Osäfe MCB DP B Curve 63 Amp	O2B63	6	1737

## Osäfe Miniature Circuit Breakers (MCB)



### Single Pole C Curve

Description	Item Code	Packing Qty.	List Price Unit (₹)
Osäfe MCB SP C Curve 0.5-5 Amp	O1C0.5-5	12	531
Osäfe MCB SP C Curve 06-32 Amp	O1C6-32	12	333
Osäfe MCB SP C Curve 40 Amp	O1C40	12	729
Osäfe MCB SP C Curve 50-63 Amp	O1C50-63	12	774



**Single Pole Neutral C Curve**

Description	Item Code	Packing Qty.	List Price Unit (₹)
Osäfe MCB SPN C Curve 0.5-5 Amp	O1NC0.5-5	6	1278
Osäfe MCB SPN C Curve 06-32 Amp	O1NC6-32	6	990
Osäfe MCB SPN C Curve 40 Amp	O1NC40	6	1377
Osäfe MCB SPN C Curve 50-63 Amp	O1NC50-63	6	1584



**Double Pole C Curve**

Description	Item Code	Packing Qty.	List Price Unit (₹)
Osäfe MCB DP C Curve 0.5-5 Amp	O2C0.5-5	6	1368
Osäfe MCB DP C Curve 06-32 Amp	O2C6-32	6	1053
Osäfe MCB DP C Curve 40 Amp	O2C40	6	1638
Osäfe MCB DP C Curve 50-63 Amp	O2C50-63	6	1737



**Three Pole C Curve**

Description	Item Code	Packing Qty.	List Price Unit (₹)
Osäfe MCB TP C Curve 0.5-5 Amp	O3C0.5-5	4	1944
Osäfe MCB TP C Curve 06-32 Amp	O3C6-32	4	1683
Osäfe MCB TP C Curve 40Amp	O3C40	4	2304
Osäfe MCB TP C Curve 50-63Amp	O3C50-63	4	2754



**Three Pole Neutral C Curve**

Description	Item Code	Packing Qty.	List Price Unit (₹)
Osäfe MCB TPN C Curve 0.5-5 Amp	O3NC.5-5	3	2529
Osäfe MCB TPN C Curve 06-32 Amp	O3NC6-32	3	2061
Osäfe MCB TPN C Curve 40Amp	O3NC40	3	2817
Osäfe MCB TPN C Curve 50-63Amp	O3NC50-63	3	2997



**Four Pole C Curve**

Description	Item Code	Packing Qty.	List Price Unit (₹)
Osäfe MCB FP C Curve 0.5-5 Amp	O4C0.5-5	3	2763
Osäfe MCB FP C Curve 06-32 Amp	O4C6-32	3	2286
Osäfe MCB FP C Curve 40Amp	O4C40	3	3096
Osäfe MCB FP C Curve 50-63Amp	O4C50-63	3	3321

**Osäfe Miniature Circuit Breakers (MCB)**



**Single Pole D Curve**

Description	Item Code	Packing Qty.	List Price Unit (₹)
Osäfe MCB SP D Curve 0.5-5 Amp	O1D0.5-5	12	531
Osäfe MCB SP D Curve 06-32 Amp	O1D6-32	12	450
Osäfe MCB SP D Curve 40Amp	O1D40	12	765
Osäfe MCB SP D Curve 50-63Amp	O1D50-63	12	810



**Double Pole D Curve**

Description	Item Code	Packing Qty.	List Price Unit (₹)
Osäfe MCB DP D Curve 0.5-5 Amp	O2D0.5-5	6	1368
Osäfe MCB DP D Curve 06-32 Amp	O2D6-32	6	1134
Osäfe MCB DP D Curve 40Amp	O2D40	6	1638
Osäfe MCB DP D Curve 50-63Amp	O2D50-63	6	1908



**Three Pole D Curve**

Description	Item Code	Packing Qty.	List Price Unit (₹)
Osäfe MCB TP D Curve 0.5-5 Amp	O3D.5-5	4	1908
Osäfe MCB TP D Curve 06-32 Amp	O3D6-32	4	1710
Osäfe MCB TP D Curve 40Amp	O3D40	4	2331
Osäfe MCB TP D Curve 50-63Amp	O3D50-63	4	2646



**Four Pole D Curve**

Description	Item Code	Packing Qty.	List Price Unit (₹)
Osäfe MCB FP D Curve 0.5-5 Amp	O4D0.5-5	3	2727
Osäfe MCB FP D Curve 06-32 Amp	O4D6-32	3	2268
Osäfe MCB FP D Curve 40Amp	O4D40	3	3132
Osäfe MCB FP D Curve 50-63Amp	O4D50-63	3	3546

**Osäfe Isolator**

Ref. Standard IEC 60947-3



**Double Pole Isolator**

Description	Item Code	Packing Qty.	List Price Unit (₹)
Osäfe Isolator DP 40Amp	O2ISB40	6	720
Osäfe Isolator DP 63Amp	O2ISB63	6	891



**Three Pole Isolator**

Description	Item Code	Packing Qty.	List Price Unit (₹)
Osäfe Isolator TP 40Amp	O3ISB40	4	1206
Osäfe Isolator TP 63Amp	O3ISB63	4	1368



**Four Pole Isolator**

Description	Item Code	Packing Qty.	List Price Unit (₹)
Osäfe Isolator FP 40Amp	O4ISB40	3	1458
Osäfe Isolator FP 63Amp	O4ISB63	3	1548

**Osäfe Isolator - Double Break**

**Double Pole Isolator**

Description	Item Code	Packing Qty.	List Price Unit (₹)
Osäfe ISOLATOR DOUBLE BREAK DP 80A	O2IDB80	6	1170
Osäfe ISOLATOR DOUBLE BREAK DP 100A	O2IDB100	6	1188
Osäfe ISOLATOR DOUBLE BREAK DP 125A	O2IDB125	6	1260


**Three Pole Isolator**

Description	Item Code	Packing Qty.	List Price Unit (₹)
Osäfe ISOLATOR DOUBLE BREAK TP 80A	O3IDB80	4	1665
Osäfe ISOLATOR DOUBLE BREAK TP 100A	O3IDB100	4	1775
Osäfe ISOLATOR DOUBLE BREAK TP 125A	O3IDB125	4	1926


**Four Pole Isolator**

Description	Item Code	Packing Qty.	List Price Unit (₹)
Osäfe ISOLATOR DOUBLE BREAK FP 80A	O4IDB80	3	2142
Osäfe ISOLATOR DOUBLE BREAK FP 100A	O4IDB100	3	2241
Osäfe ISOLATOR DOUBLE BREAK FP 125A	O4IDB125	3	2231

**Osäfe MCB Changeover Switch**

Ref. Standard IEC 60947-3


**Double Pole MCB Changeover**

Description	Item Code	Packing Qty.	List Price Unit (₹)
Osäfe DP MCB Changeover Switch 25 Amp	O2CO25	6	1638
Osäfe DP MCB Changeover Switch 32 Amp	O2CO32	6	2052
Osäfe DP MCB Changeover Switch 40 Amp	O2CO40	6	2052
Osäfe DP MCB Changeover Switch 63 Amp	O2CO63	6	2421


**Four Pole MCB Changeover**

Description	Item Code	Packing Qty.	List Price Unit (₹)
Osäfe FP MCB Changeover Switch 25 Amp	O4CO25	3	2673
Osäfe FP MCB Changeover Switch 32 Amp	O4CO32	3	3942
Osäfe FP MCB Changeover Switch 40 Amp	O4CO40	3	3942
Osäfe FP MCB Changeover Switch 63 Amp	O4CO63	3	4698

**Osäfe MCB Accessories**
**Auxiliary Contact**

Description	Item Code	List Price Unit (₹)
Osäfe Auxiliary Contact 1 NO +1 NC	OAX1NO+1NC	657
Osäfe Shunt Trip 230V / 415V AC	OSHUNT	873
Osäfe Under Voltage 230V / 415V AC	-----	684

**Single Pole MCB Suitable for DC Voltage upto 220V**

Description	Item Code	Packing Qty.	List Price Unit (₹)
Osäfe Single Pole 0.5-5 Amp DC	O1DC0.5-05	12	684
Osäfe Single Pole 06-32 Amp DC	O1DC6-32	12	621
Osäfe Single Pole 40 Amp DC	O1DC40	12	1107
Osäfe Single Pole 50-63 Amp DC	O1DC63	12	1143

**Double Pole MCB Suitable for DC Voltage upto 220V**

Description	Item Code	Packing Qty.	List Price Unit (₹)
Osäfe Double Pole 0.5-5 Amp DC	O2DC0.5-05	6	1297
Osäfe Double Pole 06-32 Amp DC	O2DC6-32	6	1206
Osäfe Double Pole 40 Amp DC	O2DC40	6	2115
Osäfe Double Pole 50-63 Amp DC	O2DC63	6	2187

**DC MCB Single Pole 250V**

Description	Item Code	Packing Qty.	List Price Unit (₹)
Osäfe MCB SP DC C CURVE 6 Amp -250V	O1DCC6-250	12	621
Osäfe MCB SP DC C CURVE 10 Amp -250V	O1DCC10-250	12	621
Osäfe MCB SP DC C CURVE 12 Amp -250V	O1DCC12-250	12	621
Osäfe MCB SP DC C CURVE 16 Amp -250V	O1DCC16-250	12	621
Osäfe MCB SP DC C CURVE 20 Amp -250V	O1DCC20-250	12	621
Osäfe MCB SP DC C CURVE 25 Amp -250V	O1DCC25-250	12	621
Osäfe MCB SP DC C CURVE 32 Amp -250V	O1DCC32-250	12	621
Osäfe MCB SP DC C CURVE 40 Amp -250V	O1DCC40-250	12	1107
Osäfe MCB SP DC C CURVE 50 Amp -250V	O1DCC50-250	12	1143
Osäfe MCB SP DC C CURVE 63 Amp -250V	O1DCC63-250	12	1143

**DC MCB Double Pole 500V**

Description	Item Code	Packing Qty.	List Price Unit (₹)
Osäfe MCB DP DC C CURVE 6 Amp -500V	O2DCC6-500	6	1305
Osäfe MCB DP DC C CURVE 10 Amp -500V	O2DCC10-500	6	1305
Osäfe MCB DP DC C CURVE 12 Amp -500V	O2DCC12-500	6	1305
Osäfe MCB DP DC C CURVE 16 Amp -500V	O2DCC16-500	6	1305
Osäfe MCB DP DC C CURVE 20 Amp -500V	O2DCC20-500	6	1305
Osäfe MCB DP DC C CURVE 25 Amp -500V	O2DCC25-500	6	1305
Osäfe MCB DP DC C CURVE 32 Amp -500V	O2DCC32-500	6	1305
Osäfe MCB DP DC C CURVE 40 Amp -500V	O2DCC40-500	6	2313
Osäfe MCB DP DC C CURVE 50 Amp -500V	O2DCC50-500	6	2394
Osäfe MCB DP DC C CURVE 63 Amp -500V	O2DCC63-500	6	2394

**DC MCB Four Pole 1000V**

Description	Item Code	Packing Qty.	List Price Unit (₹)
Osäfe MCB FP DC C CURVE 6 Amp -1000V	O4DCC6-1000	3	2493
Osäfe MCB FP DC C CURVE 10 Amp -1000V	O4DCC10-1000	3	2493
Osäfe MCB FP DC C CURVE 12 Amp -1000V	O4DCC12-1000	3	2493
Osäfe MCB FP DC C CURVE 16 Amp -1000V	O4DCC16-1000	3	2493
Osäfe MCB FP DC C CURVE 20 Amp -1000V	O4DCC20-1000	3	2493
Osäfe MCB FP DC C CURVE 25 Amp -1000V	O4DCC25-1000	3	2493
Osäfe MCB FP DC C CURVE 32 Amp -1000V	O4DCC32-1000	3	2493
Osäfe MCB FP DC C CURVE 40 Amp -1000V	O4DCC40-1000	3	4410
Osäfe MCB FP DC C CURVE 50 Amp -1000V	O4DCC50-1000	3	4590
Osäfe MCB FP DC C CURVE 63 Amp -1000V	O4DCC63-1000	3	4590


**Double Pole Netural RCBO (2M)**

Description	Item Code	Packing Qty.	List Price Unit (₹)
Osäfe RCBO DP 6A 30mA C TYPE 10KA Electronic	OHRCBODPCE6-30	1	5130
Osäfe RCBO DP 10A 30mA C TYPE 10KA Electronic	OHRCBODPCE10-30	1	5130
Osäfe RCBO DP 16A 30mA C TYPE 10KA Electronic	OHRCBODPCE16-30	1	5130
Osäfe RCBO DP 20A 30mA C TYPE 10KA Electronic	OHRCBODPCE20-30	1	5130
Osäfe RCBO DP 25A 30mA C TYPE 10KA Electronic	OHRCBODPCE25-30	1	5130
Osäfe RCBO DP 32A 30mA C TYPE 10KA Electronic	OHRCBODPCE32-30	1	5130
Osäfe RCBO DP 40A 30mA C TYPE 10KA Electronic	OHRCBODPCE40-30	1	5454
Osäfe RCBO DP 50A 30mA C TYPE 10KA Electronic	OHRCBODPCE50-30	1	5670
Osäfe RCBO DP 63A 30mA C TYPE 10KA Electronic	OHRCBODPCE63-30	1	5670
Osäfe RCBO DP 6A 100mA C TYPE 10KA Electronic	OHRCBODPCE6-100	1	5130
Osäfe RCBO DP 10A 100mA C TYPE 10KA Electronic	OHRCBODPCE10-100	1	5130
Osäfe RCBO DP 16A 100mA C TYPE 10KA Electronic	OHRCBODPCE16-100	1	5130
Osäfe RCBO DP 20A 100mA C TYPE 10KA Electronic	OHRCBODPCE20-100	1	5130
Osäfe RCBO DP 25A 100mA C TYPE 10KA Electronic	OHRCBODPCE25-100	1	5130
Osäfe RCBO DP 32A 100mA C TYPE 10KA Electronic	OHRCBODPCE32-100	1	5130
Osäfe RCBO DP 40A 100mA C TYPE 10KA Electronic	OHRCBODPCE40-100	1	5454
Osäfe RCBO DP 50A 100mA C TYPE 10KA Electronic	OHRCBODPCE50-100	1	5670
Osäfe RCBO DP 63A 100mA C TYPE 10KA Electronic	OHRCBODPCE63-100	1	5670
Osäfe RCBO DP 6A 300mA C TYPE 10KA Electronic	OHRCBODPCE6-300	1	5130
Osäfe RCBO DP 10A 300mA C TYPE 10KA Electronic	OHRCBODPCE10-300	1	5130
Osäfe RCBO DP 16A 300mA C TYPE 10KA Electronic	OHRCBODPCE16-300	1	5130
Osäfe RCBO DP 20A 300mA C TYPE 10KA Electronic	OHRCBODPCE20-300	1	5130
Osäfe RCBO DP 25A 300mA C TYPE 10KA Electronic	OHRCBODPCE25-300	1	5130
Osäfe RCBO DP 32A 300mA C TYPE 10KA Electronic	OHRCBODPCE32-300	1	5130
Osäfe RCBO DP 40A 300mA C TYPE 10KA Electronic	OHRCBODPCE40-300	1	5454
Osäfe RCBO DP 50A 300mA C TYPE 10KA Electronic	OHRCBODPCE50-300	1	5670
Osäfe RCBO DP 63A 300mA C TYPE 10KA Electronic	OHRCBODPCE63-300	1	5670

**Osäfe Residual Current Circuit Breakers**

HSN Code: 85362040


**Double Pole RCCB**

Description	Item Code	Packing Qty.	List Price Unit (₹)
Osäfe 25A RCCB-2Pole 30mA	O25DP30mA	1	3627
Osäfe 25A RCCB-2Pole 100mA	O25DP100mA	1	3645
Osäfe 25A RCCB-2Pole 300mA	O25DP300mA	1	3645
Osäfe 40A RCCB-2Pole 30mA	O40DP30mA	1	3708
Osäfe 40A RCCB-2Pole 100mA	O40DP100mA	1	3915
Osäfe 40A RCCB-2Pole 300mA	O40DP300mA	1	3915
Osäfe 63A RCCB-2Pole 30mA	O63DP30mA	1	4842
Osäfe 63A RCCB-2Pole 100mA	O63DP100mA	1	4842
Osäfe 63A RCCB-2Pole 300mA	O63DP300mA	1	4842


**Four Pole RCCB**

Description	Item Code	Packing Qty.	List Price Unit (₹)
Osäfe 25A RCCB-4Pole 30mA	O25FP30mA	1	4518
Osäfe 25A RCCB-4Pole 100mA	O25FP100mA	1	4554
Osäfe 25A RCCB-4Pole 300mA	O25FP300mA	1	4554
Osäfe 40A RCCB-4Pole 30mA	O40FP30mA	1	4482
Osäfe 40A RCCB-4Pole 100mA	O40FP100mA	1	4635
Osäfe 40A RCCB-4Pole 300mA	O40FP300mA	1	4635
Osäfe 63A RCCB-4Pole 30mA	O63FP30mA	1	5040
Osäfe 63A RCCB-4Pole 100mA	O63FP100mA	1	5076
Osäfe 63A RCCB-4Pole 300mA	O63FP300mA	1	5076


**Four Pole Netural RCBO (2M)**

Description	Item Code	Packing Qty.	List Price Unit (₹)
Osäfe RCBO FP 6A 30mA C TYPE 10KA Electronic	OHRCBOFPCE6-30	1	8658
Osäfe RCBO FP 10A 30mA C TYPE 10KA Electronic	OHRCBOFPCE10-30	1	8658
Osäfe RCBO FP 16A 30mA C TYPE 10KA Electronic	OHRCBOFPCE16-30	1	8658
Osäfe RCBO FP 20A 30mA C TYPE 10KA Electronic	OHRCBOFPCE20-30	1	8658
Osäfe RCBO FP 25A 30mA C TYPE 10KA Electronic	OHRCBOFPCE25-30	1	8658
Osäfe RCBO FP 32A 30mA C TYPE 10KA Electronic	OHRCBOFPCE32-30	1	8658
Osäfe RCBO FP 40A 30mA C TYPE 10KA Electronic	OHRCBOFPCE40-30	1	9063
Osäfe RCBO FP 50A 30mA C TYPE 10KA Electronic	OHRCBOFPCE50-30	1	9378
Osäfe RCBO FP 63A 30mA C TYPE 10KA Electronic	OHRCBOFPCE63-30	1	9378
Osäfe RCBO FP 6A 100mA C TYPE 10KA Electronic	OHRCBOFPCE6-100	1	8658
Osäfe RCBO FP 10A 100mA C TYPE 10KA Electronic	OHRCBOFPCE10-100	1	8658
Osäfe RCBO FP 16A 100mA C TYPE 10KA Electronic	OHRCBOFPCE16-100	1	8658
Osäfe RCBO FP 20A 100mA C TYPE 10KA Electronic	OHRCBOFPCE20-100	1	8658
Osäfe RCBO FP 25A 100mA C TYPE 10KA Electronic	OHRCBOFPCE25-100	1	8658
Osäfe RCBO FP 32A 100mA C TYPE 10KA Electronic	OHRCBOFPCE32-100	1	8658
Osäfe RCBO FP 40A 100mA C TYPE 10KA Electronic	OHRCBOFPCE40-100	1	9063
Osäfe RCBO FP 50A 100mA C TYPE 10KA Electronic	OHRCBOFPCE50-100	1	9378
Osäfe RCBO FP 63A 100mA C TYPE 10KA Electronic	OHRCBOFPCE63-100	1	9378
Osäfe RCBO FP 6A 300mA C TYPE 10KA Electronic	OHRCBOFPCE6-300	1	8658
Osäfe RCBO FP 10A 300mA C TYPE 10KA Electronic	OHRCBOFPCE10-300	1	8658
Osäfe RCBO FP 16A 300mA C TYPE 10KA Electronic	OHRCBOFPCE16-300	1	8658
Osäfe RCBO FP 20A 300mA C TYPE 10KA Electronic	OHRCBOFPCE20-300	1	8658
Osäfe RCBO FP 25A 300mA C TYPE 10KA Electronic	OHRCBOFPCE25-300	1	8658
Osäfe RCBO FP 32A 300mA C TYPE 10KA Electronic	OHRCBOFPCE32-300	1	8658
Osäfe RCBO FP 40A 300mA C TYPE 10KA Electronic	OHRCBOFPCE40-300	1	9063
Osäfe RCBO FP 50A 300mA C TYPE 10KA Electronic	OHRCBOFPCE50-300	1	9378
Osäfe RCBO FP 63A 300mA C TYPE 10KA Electronic	OHRCBOFPCE63-300	1	9378

**Osäfe Residual Current Circuit Breakers with Over Current Protection**

**Single Pole Netural RCBO (2M)**

Description	Item Code	Packing Qty.	List Price Unit (₹)
Osäfe RCBO SPN 16A 30mA C TYPE 10KA	OHRCBOSN16-30	1	3780
Osäfe RCBO SPN 16A 100mA C TYPE 10KA	OHRCBOSN16-100	1	3780
Osäfe RCBO SPN 16A 300mA C TYPE 10KA	OHRCBOSN16-300	1	3780
Osäfe RCBO SPN 25A 30mA C TYPE 10KA	OHRCBOSN25-30	1	3837
Osäfe RCBO SPN 25A 100mA C TYPE 10KA	OHRCBOSN25-100	1	3837
Osäfe RCBO SPN 25A 300mA C TYPE 10KA	OHRCBOSN25-300	1	3837
Osäfe RCBO SPN 40A 30mA C TYPE 10KA	OHRCBOSN40-30	1	4491
Osäfe RCBO SPN 40A 100mA C TYPE 10KA	OHRCBOSN40-100	1	4491
Osäfe RCBO SPN 40A 300mA C TYPE 10KA	OHRCBOSN40-300	1	4491



HSN Code: 85371000

**Double Door SPN Distribution Boards**

Description	Item Code	Packing Qty.	List Price Unit (₹)
Osäfe 4 WAY SPN DB Double Door	OSDBDD04	1	1926
Osäfe 6 WAY SPN DB Double Door	OSDBDD06	1	2124
Osäfe 8 WAY SPN DB Double Door	OSDBDD08	1	2304
Osäfe 10 WAY SPN DB Double Door	OSDBDD10	1	2646
Osäfe 12 WAY SPN DB Double Door	OSDBDD12	1	2976
Osäfe 14 WAY SPN DB Double Door	OSDBDD14	1	3483
Osäfe 16 WAY SPN DB Double Door	OSDBDD16	1	3789

**Double Door TPN Distribution Boards**

Description	Item Code	Packing Qty.	List Price Unit (₹)
Osäfe 04 WAY TPN DB Double Door	OSDBTDD04	1	4986
Osäfe 06 WAY TPN DB Double Door	OSDBTDD06	1	5877
Osäfe 08 WAY TPN DB Double Door	OSDBTDD08	1	7263
Osäfe 10 WAY TPN DB Double Door	OSDBTDD10	1	8883
Osäfe 12 WAY TPN DB Double Door	OSDBTDD12	1	10332

**Double Door Phase Selector (Without Isolator)**

Description	Item Code	Packing Qty.	List Price Unit (₹)
Osäfe 4 W D/D 40A PH.SEL. W/O ISO	OSPSDBDD440	1	12951
Osäfe 4 W D/D 40A PH.SEL. W/O ISO	OSPSDBDD463	1	14022
Osäfe 6 W D/D 40A PH.SEL. W/O ISO	OSPSDBDD640	1	14788
Osäfe 6 W D/D 63A PH.SEL. W/O ISO	OSPSDBDD663	1	15705
Osäfe 8 W D/D 40A PH.SEL. W/O ISO	OSPSDBDD840	1	15246
Osäfe 8 W D/D 63A PH.SEL. W/O ISO	OSPSDBDD863	1	16407

HSN Code: 85365090

**Switches**

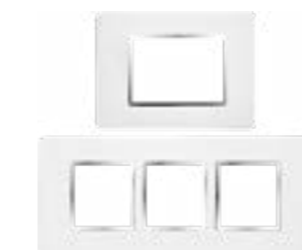

ITEM CODE	MODULE	STD. PACK	DESCRIPTION	List Price Unit (₹)
NSWR1W006	1	1/20/600	EDENO 6AX One Way Switch	38
NSWR2W006	1	1/20/600	EDENO 6AX Two Way Switch	68
NSWRBP006	1	1/20/600	EDENO 6AX BP Switch	71
NSWRBP1006	1	1/10/300	EDENO 6AX BP Switch with Indicator 2M	131
NSWR1W016	1	1/20/600	EDENO 16AX One Way Switch	87
NSWR2W020	1	1/20/600	EDENO 20A Two Way Switch	116
NSWRW1016	1	1/20/600	EDENO 16AX One Way Switch with Indicator	95
NSWRDPW1032	1	1/10/300	EDENO 32A DP Switch with Indicator	299

**Socket/Accessories**


ITEM CODE	MODULE	STD. PACK	DESCRIPTION	List Price Unit (₹)
NSWRX2P006	1	1/20/400	EDENO 6 AMP. 2 PIN Socket	63
NSWRX3P006	1	1/10/300	EDENO 6 AMP. 3 PIN Socket	72
NSWRX16	1	1/10/300	EDENO 16 AMP. Combined Shutter Socket	149
NSWRXU	1	1/10/300	EDENO 6/10/13A Universal Socket	205
NSWRX3P006	1	1/10/300	EDENO 6A 3 PIN Round Socket	72
NSWRXRJ2L	1	1/20/400	EDENO RJ-11, 2 Line Socket	105
NSWRXRJ45C	1	1/15/300	EDENO RJ-45 Socket CAT	562
NSWRXTV	1	1/20/400	EDENO Television Socket	95
NSWRXNIR	1	1/20/400	EDENO Neon Indicator Red	82
NSWRFR1M	1	1/10/360	EDENO Fan Regulator 1 Module 4 Step 80W	305
NSWRFR2M	1	1/5/180	EDENO Fan Regulator 2 Module 100W	352
NSWRD1M	1	1/10/360	EDENO Dimmer 1 Module 450 W	315
NSWRD2M650W	1	1/5/180	EDENO Dimmer 2 Module 650 WATT	415
NSWRUSBC1M	1	1/10/125	EDENO USB Charger 1M 2.1A 5V DC	998
NSWRBP1M	1	1/40/720	EDENO Blank Plate (1M)	21
NSWRMS25A	1	1/5/125	EDENO Motor Starter 25A	431
NSWRX25	1	1/10/300	EDENO 25A Combined Shutter Socket	171


**Plate**


ITEM CODE	MODULE	STD. PACK	DESCRIPTION	List Price Unit (₹)
NSWRP1M	1	1/10/240	EDENO 1 Module Plate	84
NSWRP2M	1	1/10/240	EDENO 2 Module Plate	84
NSWRP3M	1	1/10/180	EDENO 3 Module Plate	100
NSWRP4M	1	1/10/180	EDENO 4 Module Plate	116
NSWRP6M	1	1/10/120	EDENO 6 Module Plate	147
NSWRP8MH	1	1/10/120	EDENO 8 Module Plate (H)	208
NSWRP8MV	1	1/10/120	EDENO 8 Module Plate (V)	208
NSWRP12M	1	1/10/70	EDENO 12 Module Plate	225
NSWRP18M	1	1/10/60	EDENO 18 Module Plate	350

**Chrome Plate**


ITEM CODE	MODULE	STD. PACK	DESCRIPTION	List Price Unit (₹)
NSWRP1MC	1	1/10/240	EDENO 1 MODULE CHROME PLATE	88
NSWRP2MC	2	1/10/240	EDENO 2 MODULE CHROME PLATE	88
NSWRP3MC	3	1/10/180	EDENO 3 MODULE CHROME PLATE	105
NSWRP4MC	4	1/10/180	EDENO 4 MODULE CHROME PLATE	121
NSWRP6MC	6	1/10/120	EDENO 6 MODULE CHROME PLATE	154
NSWRP8MHC	8	1/10/120	EDENO 8 MODULE CHROME PLATE (H)	218
NSWRP8MVC	8	1/10/120	EDENO 8 MODULE CHROME PLATE (V)	218
NSWRP12MC	12	01/10/70	EDENO 12 MODULE CHROME PLATE	234
NSWRP18MC	18	01/10/60	EDENO 18 MODULE CHROME PLATE	367

Single Plate



ITEM CODE	MODULE	STD. PACK	DESCRIPTION	List Price Unit (₹)
NSWRSP1M	1	1/10/240	EDENO 1 Module Single Plate	53
NSWRSP2M	1	1/10/240	EDENO 2 Module Single Plate	53
NSWRSP3M	1	1/10/180	EDENO 3 Module Single Plate	63
NSWRSP4M	1	1/10/180	EDENO 4 Module Single Plate	79
NSWRSP6M	1	1/10/120	EDENO 6 Module Single Plate	110
NSWRSP8MH	1	1/10/120	EDENO 8 Module Single Plate (H)	139
NSWRSP12M	1	1/10/70	EDENO 12 Module Single Plate	168
NSWRSP18M	1	1/10/60	EDENO 18 Module Single Plate	210

Modular MCB



ITEM CODE	MODULE	STD. PACK	DESCRIPTION	List Price Unit (₹)
NSWRSP25	1	1/20/400	EDENO Modular MCB SP 25A	326
NSWRSP32	1	1/20/400	EDENO Modular MCB SP 32A	326
NSWRDP20	1	1/10/200	EDENO Modular MCB DP 20A	641
NSWRDP32	1	1/10/200	EDENO Modular MCB DP 32A	641



**SWITCH LIFE ON**

We present Edeno, the most fitting ornaments for your walls. The seamless design, vibrant colours and modern safety features make this range ideal for every home.



- Low Noise
- Brass Terminals
- Captive Screws
- Tunnel Terminals
- Shuttered Sockets
- Wire Capability of 6 sq. mm



www.hplindia.com

Switches

HSN Code: 85365090



ITEM CODE	MODULE	STD. PACK	DESCRIPTION	List Price Unit (₹)
MSSMS1W006	1	1/20/600	6AX One Way Switch	95
MSSMS1W010	1	1/20/600	10AX One Way Switch	95
MSSMS1W006	1	1/20/600	6AX One Way Switch With Indicator	142
MSSMS1W010	1	1/20/600	10AX One Way Switch With Indicator	142
MSSMS2W006	1	1/20/600	6AX Two Way Switch	133
MSSMS2W010	1	1/20/600	10AX Two Way Switch	133
MSSMSBP006	1	1/20/600	6A BP Switch	141
MSSMSBP010	1	1/20/600	10A BP Switch	141
MSSMSBP006	1	1/20/600	6A BP Switch With Indicator	236
MSSMSBP010	1	1/20/600	10A BP Switch With Indicator	236
MSSMSBPW02M006	2	1/10/300	6A BP Switch With Indicator	396
MSSMSBPW02M010	2	1/10/300	10A BP Switch With Indicator	396
MSSMS2W2M06	2	1/20/600	6AX TWO WAY SWITCH 2 MODULE	396
MSSMS2W2M10	2	1/20/600	10AX TWO WAY SWITCH 2 MODULE	396
MSSMSBP2M006	2	1/20/600	6AX BP SWITCH + 2 MODULE	396
MSSMSBP2M010	2	1/20/600	10AX BP SWITCH + 2 MODULE	396
MSSMS1W016	1	1/20/600	16AX One Way Switch	171
MSSMS1W020	1	1/20/600	20A One Way Switch	171
MSSMS1W016	1	1/20/600	16AX One Way Switch With Indicator	189
MSSMS1W020	1	1/20/600	20A One Way Switch With Indicator	189
MSSMS2W016	1	1/20/600	16AX Two Way Switch	189
MSSMS2W020	1	1/20/600	20A Two Way Switch	189
MSSMSDPW032	2	1/10/300	32A DP Switch With Indicator	350

Power Sockets

HSN Code: 85369090



ITEM CODE	MODULE	STD. PACK	DESCRIPTION	List Price Unit (₹)
MSSMX2P006	1	1/10/480	6 AMP. 2 PIN SOCKET	123
MSSMX3P006	2	1/10/300	6 AMP. 3 PIN SOCKET	160
MSSMX616	2	1/10/300	6 /16 AMP. COMBINED SOCKET	246
MSSMXU	2	1/10/300	6/10/13A UNIVERSAL SOCKET	255
MSSMX25	2	1/10/300	25AMP SOCKET	265

Regulators & Dimmers

HSN Code: 85437090



ITEM CODE	MODULE	STD. PACK	DESCRIPTION	List Price Unit (₹)
MSSMFR1M	1	1/10/240	FAN REGULATOR	441
MSSMFR2M	2	1/5/120	FAN REGULATOR	513
MSSMD1M	1	1/10/240	DIMMER 200 WATT	433
MSSMD2M400W	2	1/5/120	DIMMER 400 WATT	510
MSSMD3M1000W	3	1/5/75	DIMMER 1000 WATT	718

Single Phase Motor Starter

HSN Code: 85369010



ITEM CODE	MODULE	STD. PACK	DESCRIPTION	List Price Unit (₹)
MSSMMS1625	3	1/5/120	16-25 AMP. MOTOR STARTER	727
MSSMMS10A	2	1/5/120	MOTOR STARTER 10A	727
MSSMMS16A	2	1/5/120	MOTOR STARTER 16A	727
MSSMMS20A	2	1/5/120	MOTOR STARTER 20A	727
MSSMMS25A	2	1/5/120	MOTOR STARTER 25A	727

Communication Sockets

HSN Code: 85437090



ITEM CODE	MODULE	STD. PACK	DESCRIPTION	List Price Unit (₹)
MSSMXRJ2L	1	1/10/480	RJ-11, 2 LINE SOCKET	171
MSSMXRJ4L	1	1/10/480	RJ-11, 4 LINE SOCKET	288
MSSMXRJ2LTJ	1	1/10/480	RJ-11, 2 LINE-TWIN JACK	312
MSSMXRJ45	1	1/10/480	RJ-45 SOCKET	406
MSSMXRJ45C	1	1/10/480	RJ-45 SOCKET CAT6	510
MSSMXCO	1	1/10/480	CORD OUTLET	123
MSSMXTV	1	1/10/480	TELEVISION SOCKET	246
MSSMXA	1	1/10/480	AUDIO SOCKET	425
MSSMXD	1	1/10/480	DVD SOCKET	425
MSSMXNIR	1	1/10/480	NEON INDICATOR RED	132
MSSMXNIG	1	1/10/480	NEON INDICATOR GREEN	132

Hotel / Hospitality Range

HSN Code: 85365090



ITEM CODE	MODULE	STD. PACK	DESCRIPTION	List Price Unit (₹)
MSSMSKTS	2	1/1/48	KEY TAG SWITCH STANDALONE	2286

HSN Code: 94054090

ITEM CODE	MODULE	STD. PACK	DESCRIPTION	List Price Unit (₹)
MSSMSL3M	3	1/5/75	SKIRTING LIGHT 3M WITH LED	694
MSSMSL2M	2	1/5/120	SKIRTING LIGHT 2M WITH LED	737

Speciality Products

HSN Code: 85365090



ITEM CODE	MODULE	STD. PACK	DESCRIPTION	List Price Unit (₹)
MSSMUSBC2M2P	2	5	USB CHARGER - 2 PORT	1417

Support Modules

HSN Code: 94054090



ITEM CODE	MODULE	STD. PACK	DESCRIPTION	List Price Unit (₹)
MSSMNL	2	1/5/120	NIGHT LIGHT	236

HSN Code: 85311090

ITEM CODE	MODULE	STD. PACK	DESCRIPTION	List Price Unit (₹)
MSSMBZ	2	1/5/120	BUZZER	350

HSN Code: 85389000

ITEM CODE	MODULE	STD. PACK	DESCRIPTION	List Price Unit (₹)
MSSMBP1M	1	1/40/1200	BLANK	47
MSSMBP2M	2	1/10/480	BLANK PLATE	76

HSN Code: 85389000

ITEM CODE	MODULE	STD. PACK	DESCRIPTION	List Price Unit (₹)
MSSMSP10	1	1/20/360	MODULAR MCB SINGLE POLE 10 A	311
MSSMSP16	1	1/20/360	MODULAR MCB SINGLE POLE 16 A	311
MSSMSP20	1	1/20/360	MODULAR MCB SINGLE POLE 20 A	311
MSSMSP32	1	1/20/360	MODULAR MCB SINGLE POLE 32 A	311
MSSMDP10	2	1/10/180	MODULAR MCB DOUBLE POLE 10 A	604
MSSMDP16	2	1/10/180	MODULAR MCB DOUBLE POLE 16 A	604
MSSMDP20	2	1/10/180	MODULAR MCB DOUBLE POLE 20 A	604
MSSMDP32	2	1/10/180	MODULAR MCB DOUBLE POLE 32 A	604

Plates White

HSN Code: 85389000



ITEM CODE	MODULE	STD. PACK	DESCRIPTION	List Price Unit (₹)
MSSMP1M	1	1/10/180	1 MODULE PLATE	95
MSSMP2M	2	1/10/180	2 MODULE PLATE	95
MSSMP3M	3	1/10/180	3 MODULE PLATE	123
MSSMPS3M	3	1/10/180	3 MODULE PLATE STANDALONE	123
MSSMPS4M	4	1/10/330	4 MODULE PLATE STANDALONE	142
MSSMP4M	4	1/10/330	4 MODULE PLATE	142
MSSMP6M	6	1/10/250	6 MODULE PLATE	195
MSSMP8MH	8	1/10/210	8 MODULE PLATE (H)	238
MSSMP8MV	8	1/10/210	8 MODULE PLATE (V)	238
MSSMP12M	12	1/10/150	12 MODULE PLATE	272
MSSMP16M	16	1/10/120	16 MODULE PLATE	426
MSSMP18M	18	1/10/100	18 MODULE PLATE	426

Coloured Plates

HSN Code: 85389000



ITEM CODE	MODULE	STD. PACK	DESCRIPTION	List Price Unit (₹)
MSSMPC1M	1	1/10/180	1 MODULE COLOURED PLATE	150
MSSMPC2M	2	1/10/180	2 MODULE COLOURED PLATE	150
MSSMPC3M	3	1/10/180	3 MODULE COLOURED PLATE	189
MSSMPC4M	4	1/10/330	4 MODULE COLOURED PLATE	217
MSSMPC6M	6	1/10/250	6 MODULE COLOURED PLATE	312
MSSMPC8MH	8	1/10/210	8 MODULE COLOURED PLATE (H)	491
MSSMPC8MV	8	1/10/120	8 MODULE COLOURED PLATE (V)	491
MSSMPC12M	12	1/10/150	12 MODULE COLOURED PLATE	435
MSSMPC16M	16	1/10/120	16 MODULE COLOURED PLATE	491
MSSMPC18M	18	1/10/120	18 MODULE COLOURED PLATE	709

Metal Boxes (for Smart & Edeno)

HSN Code: 85389000



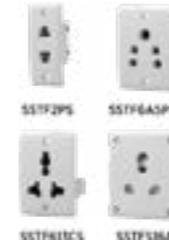
ITEM CODE	STD. PACK	DESCRIPTION	List Price Unit (₹)
MSSM2MMB	1/10/108	1 / 2 MODULE METAL BOX	87
MSSM3MMB	1/1/80	3 MODULE METAL BOX	97
MSSM4MMB	1/1/58	4 MODULE METAL BOX	119
MSSM6MMB	1/1/40	6 MODULE METAL BOX	180
MSSM8MMBH	1/1/36	8 MODULE METAL BOX (H)	218
MSSM8MMBV	1/1/29	8 MODULE METAL BOX (V)	218
MSSM12MMB	1/1/21	12/16 MODULE METAL BOX	293
MSSM18MMB	1/1/14	18 MODULE METAL BOX	350

Switches



ITEM CODE	STD. PACK	DESCRIPTION	HSN CODE	List Price Unit (₹)
SSTF6A1W	1/40/760	6A 1 Way Switch	85365090	37
SSTF6ABP	1/40/760	6A Bell Push Switch	85365090	55
SSTF6A2W	1/40/760	6A 2 Way Switch	85365090	55
SSTF16AS	1/10/180	16A Switch	85365090	108
SSTF16A2WS	1/10/180	16A 2Way Switch	85365090	141
SSTFBED	1/15/390	6A 1 Way Bed Switch	85365090	64

Sockets



ITEM CODE	STD. PACK	DESCRIPTION	HSN CODE	List Price Unit (₹)
SSTF2PS	1/20/400	2 Pin Socket	85369090	55
SSTF6A3PS	1/10/260	6A, 3 Pin Socket	85369090	55
SSTF613CS	1/15/420	6/13A Combination Socket	85369090	87
SSTFS16A	1/10/180	16A Socket	85369090	119

Supports



ITEM CODE	STD. PACK	DESCRIPTION	HSN CODE	List Price Unit (₹)
SSTF6ANI	1/40/760	Neon Indicator 240V	85312000	64
SSTFKKF	1/20/400	Kit Kat Fuse	85361010	64

Connectors



ITEM CODE	STD. PACK	DESCRIPTION	HSN CODE	List Price Unit (₹)
SSTFTVOM	1/20/400	T.V. Outlet Mini	85369090	55
SSTFTJM	1/20/400	Telephone Jack Mini	85369090	87
SSTFTVOD	1/20/400	T.V. Outlet Deluxe	85369090	64

Controllers



ITEM CODE	STD. PACK	DESCRIPTION	HSN CODE	List Price Unit (₹)
SSTFMD	1/10/260	Mini Dimmer 400W	85437090	271
SSTFMFR	1/20/400	Mini Fan Regulator (Rotary Step 80W)	85437090	236
SSTFDFR	1/10/240	Deluxe Fan Regulator (Rotary Step 80W)	85437090	358
SSTFDD	1/10/240	Deluxe Dimmer 400W	85437090	281



**Deco Angle & Batten Holder**

HSN Code : 85366910



ITEM CODE	MODULE	STD. PACK	DESCRIPTION	List Price Unit (₹)
EASMBHN	1	20/240	Batten Holder Deco	68
EASMBHAN	1	20/240	Batten Holder Angular Deco	69
EASMBHWG	1	20/240	Batten Holder with Glass	70
EASMBHAWG	1	20/240	Batten Holder Angular with Glass	70

**Jumbo Holder**

HSN Code : 85366910



ITEM CODE	MODULE	STD. PACK	DESCRIPTION	List Price Unit (₹)
EASMBHJ	1	20/120	Batten Holder Jumbo	75

**Angle & Batten Holder**

HSN Code : 85366910



ITEM CODE	MODULE	STD. PACK	DESCRIPTION	List Price Unit (₹)
EASSTFBHN	1	20/200	Batten Holder	55
EASSTFAHN	1	20/200	Angle Holder	55
EASSTFBHAR	1	20/200	Batten Holder With Aluminum Ring	57
EASSTFBHAAR	1	20/200	Batten Holder With Aluminum Ring	57
EASSTFBHE27	1	20/200	Batten Holder - E27	57

**Angle & Batten Holder with Plate**

HSN Code : 85366910



ITEM CODE	MODULE	STD. PACK	DESCRIPTION	List Price Unit (₹)
EASSTFAHWPL	1	5/80	Angle Holder with Plate	108
EASSTFBHWPL	1	5/80	Batten Holder with Plate	108

**Pendent Holder**

HSN Code : 85366910



ITEM CODE	MODULE	STD. PACK	DESCRIPTION	List Price Unit (₹)
EASSTFPTHN	1	15/360	Pendent Holder	55

**Plano Batten Holder & Ceiling Rose**

HSN Code : 85366910



ITEM CODE	MODULE	STD. PACK	DESCRIPTION	List Price Unit (₹)
EASMBHPL	1	Jun-60	Batten Holder Plano	97
EASMCRLPL	1	Jun-60	Ceiling Rose Plano	89

**Multi Plug**

HSN Code : 85366910



ITEM CODE	MODULE	STD. PACK	DESCRIPTION	List Price Unit (₹)
EASSTFMPRP	1	20/200	Muti Plug Round Pin	130
EASMMPP	1	1/20/80	Multi Plug	142
EASMMPC6-16	1	1/6/60	Multi Plug Converter 6A to 16A	168

**Ceiling Rose**

HSN Code : 85366910



ITEM CODE	MODULE	STD. PACK	DESCRIPTION	List Price Unit (₹)
EASSTFCR	1	20/400	Ceiling Rose Small	41
EASMCRN	1	20/360	Ceiling Rose Big	43
EASSTFCR3P6A	1	20/420	Ceiling Rose 6A 3 Plate	55

**Plug Top**

HSN Code : 85311090



ITEM CODE	MODULE	STD. PACK	DESCRIPTION	List Price Unit (₹)
EASMP6AN1	1	20/240	Plug 6 Amp N1	66
EASMP16AN1	1	20/180	Plug 16 Amp N1	104
EASMP6N	1	1/20/240	PLUG 6A	68
EASMP16N	1	1/20/180	PLUG 16A	107
EASMP16I	1	1/20/180	Plug 16A With Indicator	130
EASMP6ABA	1	1/20/240	Plug 6 Amp Base Amber	80
EASMP16ABA	1	1/20/180	Plug 16 Amp Base Amber	110
EASSTF2P6ATN	1	20/520	6A 2 Pin Top	33
EASSTF2PMFN	1	15/390	2 Pin Male Female	66

**Extension Cord**

HSN Code : 85311090



ITEM CODE	MODULE	STD. PACK	DESCRIPTION	List Price Unit (₹)
EASMECO2C4M	1	1/20	Extension Cord 2 Core 4 mtr ORANGE	441
EASMECO3C4M	1	1/20	Extension Cord 3 Core 4 mtr ORANGE	499
EASMECR2C4M	1	1/20	Extension Cord 2 Core 4 mtr RED	441
EASMECR3C4M	1	1/20	Extension Cord 3 Core 4 mtr RED	499
EASMER	1	1/20	Extension Cord 2 Core White	418
EASME3R	1	1/20	Extension Cord 3 Pin White	487
EASMECR2C4MR	1	1/20	Ext. Cord 2 Core 4 mtr Red shade Round	425
EASMECR3C4MR	1	1/20	Extension Cord 3 Core 4 mtr Red Shade Round	452
EASMECW2C4MD	1	1/20	Ext. Cord 2 Core 4 mtr White Shade Diam	389

**Power Strip**

HSN Code : 85311090



ITEM CODE	MODULE	STD. PACK	DESCRIPTION	List Price Unit (₹)
EASMP54W4M	1	1/20	Power Strip 4 way 4mtr ECO	404
EASMP54W3M	1	1/20	Power Strip 4 way 3mtr DELUX	539
EASMP54W3MRS	1	1/20	Power Strip 4 way 3mtr White Round switch	562
EASMECWUSBR	1	1/20	Extention Cord with USB Charges Round with Mobile Stand	719
EASMECW6SR	1	1/20	Extention Cord with 6 Socket Round	693



## Branch Offices:

### AHMEDABAD

B-02, Icon Elegance, Nr. Pashad Nagar Corner, Opp. Karmaveer Club, E.O. Highway, Ahmedabad-380051  
Ph.: 079 - 9816886539  
E-mail: ahmadabad@hplindia.com

### BANGALORE

No.20, 2nd Floor, Farah Wineloft, 133, Infantry Road, Bangalore - 560001  
Ph.: 080-2260286788  
E-mail: bangalore@hplindia.com

### BHUBANESHWAR

The Metropolis, Plot No. A- 157, Bhaad Nagar, Bhubaneswar - 751007 (Orissa).  
Ph.: 91+ 8891374378, 8018027834  
E-mail: orissa@hplindia.com

### CHANDIGARH

SCO-18, Second Floor, Industrial Area, Phase-II, Chandigarh-160002  
Ph.: 0173-26391877 9148404442  
E-mail: chandigarh@hplindia.com

### CHENNAI

"Anar Bindu" B-4, 2nd Floor, No.-48, Paribon Road, Egmore, Chennai-600 028  
Ph.: 044-26591630, 26591837  
Fax: 044-42332943  
E-mail: chennai@hplindia.com

### COCHIN

1st Floor, A.K.B. Mahal Building, XL/7613J, Achutha Menon Lane, M.G.Road, Ernakulam, Cochin-682008  
Tel/cax: 844-2354596  
E-mail: cochin@hplindia.com

### DEHRADUN

0948, 1st Floor, East Canal Road, (Near Dazn Defence Academy) Dehradun-249061  
Ph.: 8135-284087, 2864387  
E-mail: uhradun@hplindia.com

### GURGAHATI

Rajgarh Road, Opposite China Town Restaurant, Bhowhall-761003  
Ph.: 0361-2456669  
E-mail: gurgaohati@hplindia.com

### HYDERABAD

No. 7-1-88, Flat No.403, 4th Floor, Concourse Building, Green Laxmi Road, Hyderabad-500016,  
Ph.: 040-66657378  
E-mail: hyderabad@hplindia.com

### INDORE

411 Balguru Pathway Opp. C21 Mall, Near Patika Showroom Indore-462010  
Ph.: 0731-4260828, 4228840  
E-mail: indore@hplindia.com

### JAIPOUR

512, 5th Floor, Plot No. 8-8, Corporate Park, Gopal Bari, Ajmer Road, Jaipur-302001  
Ph.: 0141-4821088  
E-mail: jaipur@hplindia.com

### KOLKATA

88, Gemani Chandra Avenue, India House, 7th Floor, Block-C, Kolkata-700013  
Ph.: +91 9038094379  
E-mail: kolkata@hplindia.com

### LUDHIANA

1st Floor, Jain Building, 14A5, Park Road Harimagar, Ludhiana-142001  
Ph.: 0622-4821687  
E-mail: ludhiana@hplindia.com

### MUMBAI

204, Rushabh Chambers, 2nd Floor, Off-Mahatma Road, Near Rishi Hotel, Marol, Andheri East, Mumbai-400009  
E-mail: mumbai@hplindia.com

### NAGPUR

Jagtap House, Flat No. 07, 1st Floor, Ganesh Grah Nirmam Society, Near Ganesh Mandir, Ring Road, Pratap Nagar, Nagpur-440022,  
Ph.: 0713-2222996  
E-mail: nagpur@hplindia.com

### PATNA

Hean Plaza, 5th Floor - 610, Paster Road, Patna-800001(Bihar),  
Ph.: +91 9034687288  
E-mail: patna@hplindia.com

### PUNE

Sunrise Signia 3rd Floor, Plot No. 282 Solans No. 11 B Opp. M255 Office Sonapur Path Puna-411001 Ph.: +91 9026032724  
E-mail: pune@hplindia.com

### RAMPUR

1st Floor, Near Holy Heart School Chhatrapati College Road, Civil Line, Raipur (C.G.)-492008,  
Ph.: 0771-421902384  
E-mail: raipur@hplindia.com

### VARANASI

408A10, Silver Oak Complex, Near Shreevik Park, Char Rasta, Productivity Road, Akola, Varanasi - 226028 Gujarat  
Ph.: 0265-400699, Fax:0265-2362107  
E-mail: varanasi@hplindia.com

### VIJAYAWADA

D.No.-29-37-135, 2nd Floor, G. R. Plaza, Eluru Road, Beside Canara Bank, Vijayawada-520002 Ph.: 8888-8822281  
E-mail: vijayawada@hplindia.com

## Resident Offices:

Agartala	Balmore	Cuttack	Jamshapur	Mada	Rajkot	Tirupati
Agri	Belgaun	Devgangra	Jalandhar	Mangalore	Rourkela	Tirchy
Alahabad	Bornampur	Durg	Jhansuapala	Morut	Baion	Tiruvandrum
Anantpuram	Bhilai	Goa	Jodhpur	Moradabad	Siber	Udaipur
Aurangabad	Bhopal	Gorekhpur	Kanyakumari	Mysore	Siliguri	Vapi
Ammavall	Bilaspur	Guilberga	Kolhapur	Nagarkoil	Guntur	Varanasi
Alola	Bijapur	Habli	Kota	Nasik	Gwalapur	Vellore
Angul	Calicut	Jaunpur	Ludhiana	Patna	Grinagar	Vizag
Banali	Colmatore	Jabal	Madurai	Pondicherry	Barrabatur	

## Works:

- Gurgaon - Haryana
- Sonapat - Haryana
- Kurdil - Haryana
- Karnal - Haryana
- Jabli - Himachal Pradesh

**Terms & Conditions**  
 • Prices are inclusive of Duties, GST and any other taxes as applicable.  
 • The prices are subject to change without any prior notice.  
 • Company reserved the right to issue amendments, which may arise due to any error in price list.  
 • All disputes are subject to Delhi Jurisdiction only.  
 Please refer separate price list for other product range.



## HPL Electric & Power Ltd

Corp. Office: 78-B, Phase-IV, Sector-87, HSIIDC Industrial Estate, Kundli-131028, Sonapat, Haryana INDIA.  
 Tel: +91-130-360 8868, 360 3437  
 Registered Office: 1/20, Asaf Ali Road, Near Delhi-110 002, INDIA.  
 E-mail: hpl@hplindia.com

Follow us:

Customer Care No.: 1800-168188  
 E-mail: customercare@hplindia.com  
 For online Complaint Registration  
<https://www.hplindia.com/registration-complaint.php>  
[www.hplindia.com](http://www.hplindia.com)