

Crosby® Screw Pin Shackles



- Capacities 1/3 Ton to 55 metric tons, grade 6.
- Forged - Quenched and Tempered, with alloy pins. Hot Dip galvanized or Self Colored
- Fatigue rated. Approved for use at -40°C to 204°C
- Shackles are Quenched and Tempered and can meet DNV impact requirements
- Sizes 1/2t-25t meet the performance requirements of EN13889:2003
- Meets or exceeds all requirements of ASME B30.26
- Type Approval and certification in accordance with ABS 2006 Steel Vessel Rules 1-1-17.7 and ABS Guide for Certification of Cranes



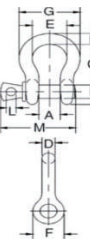
G-209 / S-209 Screw Pin Anchor Shackles

Nominal Size (in.)	Working Load Limit (t) [†]	Stock No.		Weight Each (kg)	Dimensions(mm)														Tolerance +/-	
		G-209	S-209		A	B	C	D	E	F	G	H	L	M	P	C	A			
3/16	1/3	1018357	-	.03	9.65	6.35	22.4	4.85	15.2	14.2	24.9	37.3	4.06	28.4	4.85	1.50	1.50			
1/4	1/2	1018375	1018384	.05	11.9	7.85	28.7	6.35	19.8	15.5	32.5	46.7	4.85	35.1	6.35	1.50	1.50			
5/16	3/4	1018393	1018400	.09	13.5	9.65	31.0	7.85	21.3	19.1	37.3	53.0	5.60	42.2	7.85	3.30	1.50			
3/8	1	1018419	1018428	.14	16.8	11.2	36.6	9.65	26.2	23.1	45.2	63.0	6.35	51.5	9.65	3.30	1.50			
7/16	1-1/2	1018437	1018446	.17	19.1	12.7	42.9	11.2	29.5	26.9	51.5	74.0	7.85	60.5	11.2	3.30	1.50			
1/2	2	1018455	1018464	.33	20.6	16.0	47.8	12.7	33.3	30.2	58.5	83.5	9.65	68.5	12.7	3.30	1.50			
5/8	3-1/4	1018473	1018482	.62	26.9	19.1	60.5	16.0	42.9	38.1	74.5	106	11.2	85.0	17.5	6.35	1.50			
3/4	4-3/4	1018491	1018507	1.07	31.8	22.4	71.5	19.1	51.0	46.0	89.0	126	12.7	101	20.6	6.35	1.50			
7/8	6-1/2	1018516	1018525	1.64	36.6	25.4	84.0	22.4	58.0	53.0	102	148	12.7	114	24.6	6.35	1.50			
1	8-1/2	1018534	1018543	2.28	42.9	28.7	95.5	25.4	68.5	60.5	119	167	14.2	129	26.9	6.35	1.50			
1-1/8	9-1/2	1018552	1018561	3.36	46.0	31.8	108	29.5	74.0	68.5	131	190	16.0	142	31.8	6.35	1.50			
1-1/4	12	1018570	1018589	4.31	51.5	35.1	119	32.8	82.5	76.0	146	210	17.5	156	35.1	6.35	1.50			
1-3/8	13-1/2	1018598	1018605	6.14	57.0	38.1	133	36.1	92.0	84.0	162	233	19.1	174	38.1	6.35	3.30			
1-1/2	17	1018614	1018623	7.80	60.5	41.4	146	39.1	98.5	92.0	175	254	20.6	187	41.1	6.35	3.30			
1-3/4	25	1018632	1018641	12.6	73.0	51.0	178	46.7	127	106	225	313	25.4	231	57.0	6.35	3.30			
2	35	1018650	1018669	20.4	82.5	57.0	197	53.0	146	122	253	348	31.0	263	61.0	6.35	3.30			
2-1/2	55	1018678	1018687	38.9	105	70.0	267	69.0	184	145	327	453	35.1	330	79.5	6.35	6.35			

SCREW PIN ANCHOR SHACKLE



G-209 / S-209



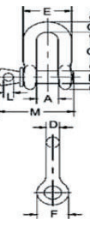
G-210 / S-210 Screw Pin Anchor Shackles

Nominal Size (in.)	Working Load Limit (t) [†]	Stock No.		Weight Each (kg)	Dimensions(mm)														Tolerance +/-	
		G-210	S-210		A	B	C	D	E	F	G	K	L	M	G	A				
1/4	1/2	1019150	1019169	.05	11.9	7.85	6.35	6.35	24.6	15.5	22.4	40.4	4.85	35.1	1.50	1.50				
5/16	3/4	1019178	1019187	.08	13.5	9.65	7.85	7.85	29.5	19.1	26.2	48.5	5.60	42.2	1.50	1.50				
3/8	1	1019196	1019203	.13	16.8	11.2	9.65	9.65	35.8	23.1	31.8	58.5	6.35	51.5	3.30	1.50				
7/16	1-1/2	1019212	1019221	.20	19.1	12.7	11.2	11.2	41.4	26.9	36.6	67.5	7.85	60.5	3.30	1.50				
1/2	2	1019230	1019249	.27	20.6	16.0	12.7	12.7	46.0	30.2	41.4	77.0	9.65	68.5	3.30	1.50				
5/8	3-1/4	1019258	1019267	.57	26.9	19.1	15.7	16.0	58.5	38.1	51.0	95.5	11.2	85.0	3.30	1.50				
3/4	4-3/4	1019276	1019285	1.20	31.8	22.4	20.6	19.1	70.0	46.0	60.5	115	12.7	101	6.35	1.50				
7/8	6-1/2	1019294	1019301	1.43	36.6	25.4	24.6	22.4	81.0	53.0	71.5	135	12.7	114	6.35	1.50				
1	8-1/2	1019310	1019329	2.15	42.9	28.7	25.4	25.4	93.5	60.5	81.0	151	14.2	129	6.35	1.50				
1-1/8	9-1/2	1019338	1019347	3.06	46.0	31.8	31.8	28.7	103	68.5	91.0	172	16.0	142	6.35	1.50				
1-1/4	12	1019356	1019365	4.11	51.5	35.1	35.1	31.8	115	76.0	100	191	17.5	156	6.35	3.30				
1-3/8	13-1/2	1019374	1019383	5.28	57.0	38.1	38.1	35.1	127	84.0	111	210	19.1	174	6.35	3.30				
1-1/2	17	1019392	1019409	7.23	60.5	41.4	41.1	38.1	137	92.0	122	230	20.6	187	6.35	3.30				
1-3/4	25	1019418	1019427	12.1	73.0	51.0	54.0	44.5	162	106	146	279	25.4	231	6.35	3.30				
2	35	1019436	1019445	19.2	82.5	57.0	60.0	51.0	184	122	172	312	31.0	263	6.35	3.30				
2-1/2	55	1019454	1019463	32.5	105	70.0	66.5	66.5	238	145	203	377	35.1	330	6.35	6.35				

SCREW PIN CHAIN



G-210 / S-210

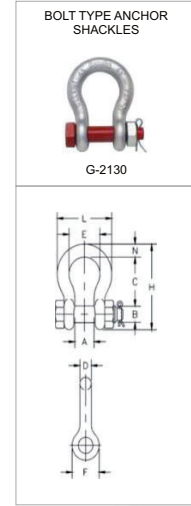


Crosby® Bolt Type Shackles



- Capacities 1/3 thru 150 metric tons, grade 6
- Forged – Quenched and Tempered, with alloy pins. Hot Dip galvanized or Self Colored are all hot dip galvanized/Meets or exceeds all requirements of ASME B30.26
- Crosby 2t through 25t G2130 anchor shackles are type approved to DNV Certification Notes 2.7-1- Offshore Containers
- All other 2130 and all 2150 shackles can meet charpy requirements of 42 joules (31 ft-lbs) avg at -20°C (-4°F) upon special request

G-2130 – Bolt Type Anchor Shackle



Nominal Size (in.)	Working Load Limit (t) [†]	Stock No.		Weight Each (lbs)	Dimensions(mm)														Tolerance +/-	
		G-2130	S-2130		A	B	C	D	E	F	H	L	N	C	A					
3/16	1/3t	1019464	-	.06	9.65	6.35	22.4	4.85	15.2	14.2	24.9	37.3	4.06	28.4	4.85	1.50	1.50			
1/4	1/2	1019466	-	.11	11.9	7.85	28.7	6.35	19.8	15.5	32.5	46.7	4.85	35.1	6.35	1.50	1.50			
5/16	3/4	1019468	-	.22	13.5	9.65	31.0	7.85	21.3	19.1	37.3	53.0	5.60	42.2	7.85	3.30	1.50			
3/8	1	1019470	-	.33	16.8	11.2	36.6	9.65	26.2	23.1	45.2	63.0	6.35	51.5	9.65	3.30	1.50			
7/16	1-1/2	1019471	-	.49	19.1	12.7	42.9	11.2	29.5	26.9	51.5	74.0	7.85	60.5	11.2	3.30	1.50			
1/2	2	1019472	1019481	.79	20.6	16.0	47.8	12.7	33.3	30.2	58.5	83.5	9.65	68.5	12.7	3.30	1.50			
5/8	3-1/4	1019490	1019506	1.68	26.9	19.1	60.5	16.0	42.9	38.1	74.5	106	11.2	85.0	17.5	6.35	1.50			
3/4	4-3/4	1019515	1019524	2.72	31.8	22.4	71.5	19.8	51.0	46.0	89.0	126	12.7	101	20.6	6.35	1.50			
7/8	6-1/2	1019533	1019542	3.95	36.6	25.4	84.0	22.4	58.0	53.0	102	148	12.7	114	24.6	6.35	1.50			
1	8-1/2	1019551	1019560	5.66	42.9	28.7	95.5	25.4	68.5	60.5	119	167	14.2	129	26.9	6.35	1.50			
1-1/8	9-1/2	1019579	1019588	8.27	46.0	31.8	108	28.7	74.0	68.5	131	190	16.0	142	31.8	6.35	1.50			
1-1/4	12	1019597	1019604	11.71	51.5	35.1	119	31.8	82.5	76.0	146	210	17.5	156	35.1	6.35	1.50			
1-3/8	13-1/2	1019613	1019622	15.83	57.0	38.1	133	35.1	92.0	84.0	162	233	19.1	174	38.1	6.35	3.30			
1-1/2	17	1019631	1019640	19.00	60.5	41.4	146	38.1	98.5	92.0	175	254	20.6	187	41.1	6.35	3.30			
1-3/4	25	1019659	1019668	33.91	73.0	51.0	178	44.5	127	106	146	231	25.4	231	57.0	6.35	3.30			
2	35	1019677	1019686	52.25	82.5	57	197	51.0	146	122	348	253	31.0	263	61.0	6.35	3.30			
2-1/2	55	1019695	1019702	98.25	105	70	267	66.5	184	145	453	327	35.1	330	79.5	6.35	6.35			
3	†85	1019711	-	154.00	127	82.5	330	76.0	200	165	546	365	41.0	330	82.5	6.35	6.35			
3-1/2	†120t	1019739	-	265.00	133	95.5	372	92.0	229	203	626	419	44.5	330	95.5	6.35	6.35			
4	†150t	1019757	-	338.00	140	108	368	104	254	229	653	468	46.0	330	108	6.35	6.35			

Crosby G417 Closed Spelter Sockets

Rope Dia. (mm)	Rope Dia. (in.)	Structural Strand Dia. (mm)	Ultimate Load (t)	Stock No.		Weight Each (kg)	Dimensions(mm)													
				G-417 Galv.	S-417 S.C.		A	B	C	D*	F	G	H	J	K	L				
6-7	1/4	-	4.50	1039897	1039904	.23	116	12.7	39.6	22.4	9.65	17.5	39.6	57.2	12.7	46.0				
8-10	5/16-3/8	-	12.0	1039913	1039922	.34	125	15.8	42.9	24.6	12.7	20.6	42.9	57.2	17.5	52.3				
11-13	7/16-1/2	-	20.0	1039931	1039940	.68	140	17.5	51.0	29.5	14.2	23.9	51.0	63.5	22.4	58.7				
14-16	9/16-5/8	12-13	30.8	1039959	1039968	1.13	162	20.6	67.0	35.8	17.5	30.2	67.0	76.2	25.4	65.0				
18	3/4	14-16	43.5	1039977	1039986	1.92	194	26.9	76.2	42.2	22.4	33.3	70.0	89.0	31.8</					

Crosby Forged Wire Rope Clip



- Each base has a Product Identification Code (PIC) for material traceability, the name CROSBY or CG and a size forged into it
- Based on the catalog breaking strength of wire rope, Crosby wire rope clips have an efficiency rating of 80% for 3-4mm to 22mm sizes and 90% for sizes 24-26mm through 90mm
- Entire Clip-Galvanized to resist corrosive and rusting action
- Sizes 1/8" through 2-1/2" and 3" (3mm through 65mm and 75-78mm) have forged bases.
- All Clips are individually bagged or tagged with proper application instructions and warning information
- Clip sizes up through 1-1/2" (38mm) have rolled threads
- Meets or exceeds all requirements of ASME B30.26 including identification, ductility, design factor, proof load and temperature requirements. Importantly, these wire rope clips meet other critical performance requirements including fatigue life, impact properties and material traceability, not addressed by ASME B30.26
- Look for the Red-U-Bolt®, your assurance of Genuine Crosby Clips



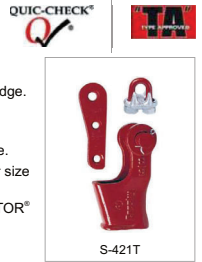
G-450 Crosby® Clips

Rope Size		Stock No.	Std. Package Qty.	Weight Per 100 (kg)	Dimensions(mm)						Tolerance +/-	
(mm)	(in.)	G-450			A	B	C	D	E	F	G	H
3-4"	1/8"	1010015	100	2.72	5.60	18.3	11.2	11.9	10.4	9.65	20.6	23.9
5"	3/16"	1010033	100	4.54	6.35	24.6	14.2	15.0	12.7	11.2	23.9	29.5
6-7"	1/4"	1010051	100	8.62	7.85	26.2	12.7	19.1	16.8	14.2	30.2	36.6
8"	5/16"	1010079	100	12.7	9.65	35.1	19.1	22.4	18.3	17.5	33.3	42.9
9-10"	3/8"	1010097	100	21.8	11.2	38.1	19.1	25.4	23.1	19.1	41.4	49.3
11"	7/16"	1010113	50	35.4	12.7	47.8	25.4	30.2	26.2	22.4	46.0	58.0
12-13"	1/2"	1010131	50	36.3	12.7	47.8	25.4	30.2	28.7	22.4	48.5	58.0
14-15"	9/16"	1010159	50	49.4	14.2	57.0	31.8	33.3	31.0	23.9	52.5	63.5
16"	5/8"	1010177	50	49.9	14.2	60.5	31.8	33.3	34.0	23.9	52.5	63.5
18-20"	3/4"	1010195	25	64	15.7	70.0	36.6	38.1	35.8	26.9	57.0	72.0
22"	7/8"	1010211	25	96	19.1	79.0	41.1	44.5	40.4	31.8	62.0	80.5
24-26"	1"	1010239	10	114	19.1	89.0	46.0	47.8	45.2	31.8	67.0	88.0
28-30"	1-1/8"	1010257	10	128	19.1	98.5	51.0	51.0	48.5	31.8	71.5	91.0
32-34"	1-1/4"	1010275	10	199	22.4	108	54.0	59.4	55.5	36.6	79.5	105
36"	1-3/8"	1010293	10	200	22.4	118	58.5	59.4	58.5	36.6	79.5	106
38"	1-1/2"	1010319	10	247	22.4	125	60.5	66.5	62.0	36.6	86.5	113
41-42"	1-5/8"	1010337	Bulk	319	25.4	135	66.5	70.0	67.5	41.4	92.0	121
44-46"	1-3/4"	1010355	Bulk	424	28.7	146	70.0	77.5	74.5	46.0	97.0	134
48-52"	2"	1010373	Bulk	590	31.8	164	76.0	86.0	77.0	51.0	113	149
56-58"	2-1/4"	1010391	Bulk	726	31.8	181	81.0	98.5	81.0	51.0	114	162
62-65"	2-1/2"	1010417	Bulk	862	31.8	195	87.5	105	93.5	51.0	119	168
** 68-72"	** 2-3/4"	1010435	Bulk	1043	31.8	211	90.5	111	124	51.0	127	175
75-78"	3"	1010453	Bulk	1406	38.1	233	98.5	121	119	60.5	149	194
** 85-90"	** 3-1/2"	1010426	Bulk	1814	38.1	273	114	140	152	60.5	157	213

Crosby S-421T Wedge Sockets

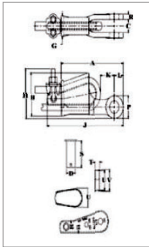


- Wedge socket terminations have an efficiency rating of 80% based on the catalog strength of XXIP wire rope.
- Meets or exceeds all requirements of ASME B30.26 including identification, ductility, design factor, proof load and temperature requirements. Importantly, these sockets meet other critical performance requirements including fatigue life, impact properties and material traceability, not addressed by ASME B30.26.
- Type Approval and certification in accordance with ABS 2007 Steel Vessel Rules. 1-1-17.7, and ABS Guide for Certification of Cranes.
- Basket is cast steel and individually magnetic particle inspected.
- Secures the tail or "dead end" of the wire rope to the wedge, thus eliminates loss or "Punch out" of the wedge.
- Eliminates the need for an extra piece of rope, and is easily installed.
- The TERMINATOR® wedge eliminates the potential breaking off of the tail due to fatigue.
- The tail, which is secured by the base of the clip and the wedge, is left undeformed and available for reuse.
- Incorporates Crosby's patented QUIC-CHECK® "Go" and "No-Go" feature cast into the wedge. The proper size rope is determined when the following criteria are met:
 - The 9-10mm through 28mm standard S-421 wedge socket can be retrofitted with the new style TERMINATOR® wedge.
- Meets the performance requirements of EN 13411-6: 2003.

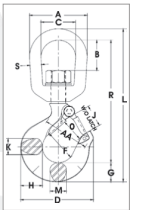


S-421T Wedge Sockets Assembly includes Socket, Wedge, Pin and Wire Rope Clip

Wire Rope Dia.		Stock No.		Weight Each (kg)	Stock No.		Wedge Only Weight Each (kg)	Optional G-4082 Bolt, Nut & Cotter	
(mm)	(in.)	S-421T	API2C S-421T		S-4421TW Wedge Only	API2C S-421TW Wedge Only		Stock No. G-4082	Weight Each(kg)
9-10	3/8	1035000	1035005	1.44	1035555	1092230	.23	1092227	.17
11-13	1/2	1035009	1035014	2.79	1035564	1092248	.48	1092236	.31
14-16	5/8	1035018	1035023	4.40	1035573	1092257	.81	1092254	.52
18-19	3/4	1035027	1035032	6.58	1035582	1092293	1.18	1092281	.86
20-22	7/8	1035036	1035041	9.75	1035591	1092319	1.82	1092307	1.46
24-26	1	1035045	1035050	13.9	1035600	1092337	2.44	1092325	2.44
28	1-1/8	1035054	1035059	20.5	1035609	1092364	3.56	1092343	3.40
30-32	1-1/4	1035063	1035068	29.4	1035618	1092375	4.80	1092372	4.70



- Forged - Quenched and Tempered
- Swivel hooks are load rated
- Hoist hooks incorporate markings forged into the product which address two (2) QUIC-CHECK® features:
- Type Approval and certification in accordance with ABS 2007 Steel Vessel Rules 1-1-17.7, and ABS Guide for Certification of Cranes.



Working Load Limit(t)*		Weight		Dimensions(mm)																
Carbon	Alloy	L-322 CN Stock No.	L-322 AN Stock No.	Each (lbs.)	A	B	C	D	F	G	H	J	K	L	M	O †	R	S	AA	Rep. Latch Stock No.
.75	1.25	1048603	1048807	.34	51.0	20.8	31.8	72.5	31.8	18.5	20.6	23.6	16.0	144	16.0	23.6	116	9.65	38.1	1096325
1	1.60	1048612	1048816	.57	63.5	33.3	38.1	80.0	35.1	21.3	23.9	24.6	18.0	170	18.0	24.6	136	12.7	50.8	1096374
1.6	2.50	1048621	1048825	1.02	76.0	38.1	44.5	91.0	38.1	25.4	29.5	26.9	22.4	197	22.4	26.9	155	16.0	50.8	1096421
2	3.20	1048630	1048834	1.04	76.0	38.1	44.5	102	41.1	28.7	33.3	30.2	23.9	210	23.9	29.5	165	16.0	50.8	1096468
3.2	5.4	1048639	1048840	2.25	89.0	41.7	50.8	123	51.0	36.6	41.4	38.1	33.3	246	28.7	35.8	191	19.1	63.5	1096515
5	8.0	1048648	1048859	4.67	116	58.0	63.5	160	63.5	46.0	52.5	45.2	42.2	317	36.6	42.9	245	25.4	76.2	1096562
7.5	11.5	1048657	1048868	8.80	127	64.5	70.0	192	76.0	57.0	67.0	51.0	47.8	375	41.4	56.5	289	28.7	101	1096609
10	16	1048666	1048880	10.5	143	63.0	79.0	212	82.5	66.0	74.5	66.5	55.5	417	49.3	61.0	311	31.8	101	1096657
15	22	1048675	1048889	21.3	180	95.5	104	263	108	76.0	89.0	86.5	68.5	542	60.5	81.0	424	38.1	127	1096704
-	31.5	-	-	32.0	180	95.5	104	346	127	93.0	118	102	72.5	590	76.2	82.6	459	38.1	165	1093716

- NOTE:
- Carbon swivel hooks 750C-150C: proof load is 2 times working load limit. Designed with a 5 to 1 safety factor.
 - Alloy swivel hooks 1,250A-3,150A: proof load is 2.5 times working load limit. Designed with a 4 to 1 safety factor.
 - Alloy swivel hook 300A: proof load is 2 times working load limit. Designed with a 4 to 1 design factor.
 - † Dimensions for hooks 3/4" carbon thru 22" alloy are for S-4320 latch kits. Dimensions for hooks 31.5t alloy are for PL latch kit.

Marketed by:



Crosby® Eye Hooks



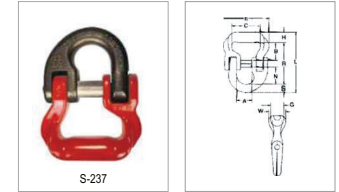
S-320 & S-320N EYE HOOKS

- The most complete line of Eye hoist hooks
- Available in carbon steel and alloy steel
- Designed with a 5:1 Design Factor for (Carbon Steel); 4.5:1 Design Factor for 30t - 60t (Alloy Steel)
- Eye hooks are load rated. Proper design, careful forging and precision controlled quenched and tempering give maximum strength without excessive weight and bulk
- Every Crosby Eye Hook has a pre-drilled cam which can be equipped with a latch.
- Type Approval and certification in accordance with ABS 2011 Steel Vessel Rules 1-1-17.7 and ABS 2007 Guide for certification of Cranes
- Metric Rated at 5:1 Design Factor for (Carbon Steel); 5:1 Design Factor for 1t - 22t (Alloy Steel)
- Can be proof tested to 2 times the working Load Limit.
- Low profile hook tip
- New integrated latch (S-4320) meets the World class standard for lifting



Working Load Limit		Hook ID Code	Eye Hook Stock No.					Weight Each (kg.)	Replacement Latch Kits		
Carbon	Alloy		Carbon S-320C S-320CN S.C.	Carbon L-320C L-320CN S.C.	Carbon G-320CN Galv.	Alloy S-320A S-320AN S.C.	Alloy L-320A L-320AN S.C.		S-4320	PL	SS-4055
.75	1.25	†D	1022200	1022205	1022208	1022375	1022380	.28	1096325	-	-
1	1.6	†F	1022211	1022216	1022219	1022386	1022391	.40	1096374	-	-
1.6	2.5	†G	1022222	1022227	1022230	1022397	1022402	.65	1096421	-	-
2	3	†H	1022233	1022238	1022241	1022406	1022413	.94	1096468	-	-
3.2	5.4	†I	1022244	1022246	1022249	1022419	1022424	1.95	1096515	1092000	-
5	8	†J	1022255	1022260	1022262	1022430	1022435	3.76	1096562	1092001	-
7.5	11.5	†K	1022264	1022271	1022274	1022441	1022446	6.80	1096609	1092002	-
10	16	†L	1022277	1022282	1022285	1022452	1022457	9.42	1096657	1092003	-
15	22	†N	1022288	1022293	1022296	1022465	1022468	17.9	1096704	1092004	-
20	31.5	O	1023289	1022302	-	1023546	1022477	27.2	-	1093716	1090161
25	37	P	1023305	-	-	1023564	-	47.6	-	1093717	1090189
30	45	S	1023323	-	-	1023582	-	67	-	1093718	1090189
40	60	T	1023341	-	-	1023608	-	103	-	1093719	1090205

High Performance Sling Connector

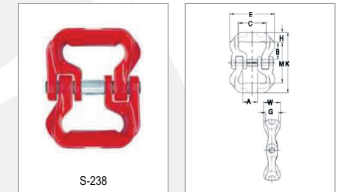


Crosby S-237 High Performance Sling Connector

Working Load Limit	S-237 Webto Lok-A-Loy Assy. StockNo.	Frame No.	Nominal Sling Body Width (mm)	Lok-A-Loy Size (mm)	Weight Each (kg)	Dimensions(mm)												
						A	B	C	E	G	H	L	N	R	S	W		
2835	2268	1020695	5	51	10	.52	22.4	36.1	50.8	80.8	25.4	20.3	107	26.4	74.2	12.2	35.1	
5670	4536	1020704	10	76	16	1.34	36.1	38.6	69.9	105	31.8	24.9	144	43.4	100	19.0	44.5	
8505	6804	1020713	15	76	20	2.15	41.4	40.1	69.9	111	35.1	27.9	165	51.8	113	23.6	47.8	
14175	11340	1020722	25	102	22	3.90	50.8	59.2	95.3	152	44.5	35.8	202	57.7	140	26.9	57.2	
17010	13607	1020731	30	102	22	4.19	50.8	55.9	95.3	157	44.5	35.8	199	57.7	137	26.9	60.5	
22680	18145	1020740	40	127	25	7.1	57.2	73.9	121	184	57.2	45.2	240	62.0	164	31.0	78.5	
34020	27215	1020759	60	152	32	11.8	65.0	85.3	146	232	58.7	47.2	281	78.0	196	38.1	80.3	

Crosby S-238 High Performance Sling Connector

Working Load Limit (Kg)	S-237 Webto Lok-A-Loy Assy. StockNo.	Frame No.	Nominal Sling Body Width (mm)	Lok-A-Loy Size (mm)	Weight Each (kg)	Dimensions(mm)										
						A	B	C	E	G	H	K	M	W		
2268	1020415	5	50.8	10	.73	22.4	36.1	50.8	80.8	25.4	20.3	124	83.8	35.1		
4536	1020423	10	76.2	16	1.50	36.1	38.6	69.9	105	31.8	24.9	145	95.5	44.5		
6804	1020432	15	76.2	20	2.22	41.4	40.1	69.9	111	35.1	27.9	156	101	47.8		
11340	1020441	25	102	22	4.58	50.8	59.2	95.3	152	44.5	35.8	213	142	57.2		
13608	1020450	30	102	22	5.17	50.8	55.9	95.3	157	44.5	35.8	207	135	60.5		
18144	1020469	40	127	25	9.39	57.2	73.9	121	184	57.2	45.2	266	176	78.5		
27216	1020478	60	152	32	14.5	65.0	85.3	146	232	58.7	47.2	298	203	80.3		

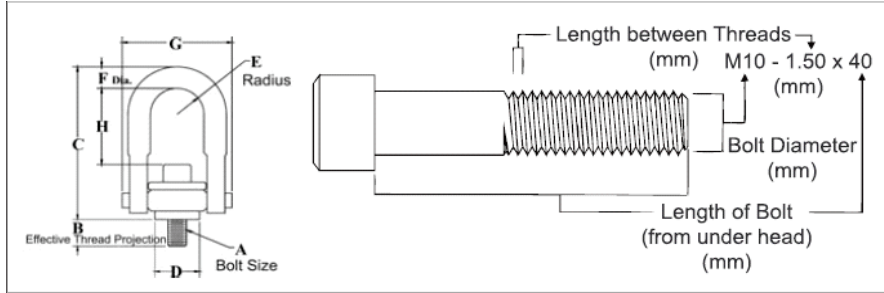


Metric Swivel Hoist Rings



Load Rated | **Sling Saver** | **CE**

- Top washer has the following features:
 - a. The Working Load Limit and Recommended Torque value are permanently stamped into each washer
 - b. Washer is color coded for easy identification: Silver - Metric thread
- Individually Proof Tested to 2-1/2 times Working Load Limit
- Bolt specification is a Grade 12.9 Alloy socket head cap screw to Din 912. All threads listed are metric (ASME/ANSI B18.3.1m)
- Designed to be used with ferrous workpiece only
- BOLT SIZE IDENTIFICATION: The size of the bolt will be stated as in the drawing below. Illustration shows meaning of each dimension given
- NOTE: For Special Applications, see page 473
- Frame 2 and larger RFID EQUIPPED



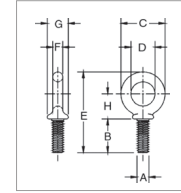
HR-125M Metric Threads

Frame Size No.	HR-125M Stock No.	Working Load Limit (kg)		Torque in Nm*	Dimensions (mm)							Weight Each (kg)	
		At a 5:1 Design	At a 4:1 Design		Bolt Size (A) †	Effective Thread Length	C	D	Radius E	Diameter F	G		H
1	1016602	400	500	10	M8 X 1.25 X 40	16.9	69.9	24.6	11.8	8.5	47.5	29.9	.17
1	1016613	450	550	16	M10 X 1.50 X 40	16.9	69.9	24.6	11.8	8.5	47.5	28.1	.18
2	1016624	1050	1300	38	M12 X 1.75 X 50	16.9	123	49.8	22.3	17.5	85.1	60.4	1.05
2	1016635	1900	2400	81	M16 X 2.00 X 60	26.9	123	49.8	22.3	17.5	85.1	56.3	1.11
2	1016644	2150	2700	136	M20 X 2.50 X 65	31.9	123	49.8	22.3	17.5	85.1	52.3	1.17
3	1016657	3000	3750	136	M20 X 2.50 X 75	27.8	167	75.2	34.7	25.4	124	76.6	3.09
3	1016668	4200	5250	312	M24 X 3.00 X 80	32.8	167	75.2	34.7	25.4	124	70.5	3.21
4	1016679	7000	8750	637	M30 X 3.50 X 120	61.7	222	94.2	44.5	30.5	157	102	6.53
5	1016690	11000	13750	1005	M36 X 4.00 X 150	54.0	318	120	60.7	44.5	215	142	16.8
5	1016701	12500	15600	1005	M48 X 5.00 X 160	64.0	318	120	60.7	44.5	215	136	17.4
5	1016712	13500	16900	1350	M48 X 5.00 X 160	74.0	318	120	60.7	44.5	215	130	18.0

Machinery Eye Bolts



- Forged Steel - Quenched & Tempered
- Working Load Limits shown are for in-line pull. For angle loading, see page 196
- Fatigue rated at 1-1/2 times the Working Load Limit at 20,000 cycles
- Meets or exceeds all requirements of ASME B30.26 including identification, ductility, design factor, proof load and temperature requirements. Importantly, these bolts meet other critical performance requirements including fatigue life, impact properties and material traceability, not addressed by ASME B30.26
- Recommended for in-line pull
 - S-279 threaded UNC
 - M-279 metric threaded



Shoulder Type Machinery Eye Bolts S-279 UNC

Size	S-279 Stock No.	Working Load Limit (t)*	Weight Each (kg.)	Dimensions (mm)							
				A** Thread	B	C	D	E	F	G	H
6.35 x 25.4	9900182	.29	.02	1/4 - 20	25.9	28.7	19.1	58.0	4.85	13.5	19.6
7.94 x 28.6	9900191	.54	.04	5/16 - 18	29.2	35.1	22.4	69.5	6.35	15.0	24.1
9.53 x 31.8	9900208	.70	.06	3/8 - 16	32.3	41.1	25.4	78.0	7.85	17.5	26.7
12.7 x 38.1	9900217	1.18	.12	1/2 - 13	38.9	49.5	30.2	94.0	9.65	23.1	32.3
15.9 x 44.5	9900226	2.35	.24	5/8 - 11	45.5	60.5	35.1	113	12.7	28.7	38.9
19.1 x 51.0	9900235	3.26	.43	3/4 - 10	52.0	70.0	38.1	129	16.0	35.1	43.4
22.2 x 57.0	9900244	4.80	.70	7/8 - 9	58.5	82.5	44.5	149	19.1	39.6	50.8
25.4 x 63.5	9900253	6.03	1.1	1 - 8	65.5	95.5	51.0	169	22.4	46.0	58.4
28.5 x 70.0	9900257	6.80	1.5	1-1/8 - 7	69.8	107	57.1	183	24.6	52.3	59.7
31.8 x 76.0	9900262	9.52	1.8	1-1/4 - 7	78.5	114	63.5	202	25.4	58.0	69.3
38.1 x 89.0	9900271	10.8	3.2	1-1/2 - 6	91.5	140	76.0	241	31.8	70.0	83.3
44.5 x 95.0	9900280	15.4	4.7	1-3/4 - 5	95.2	159	88.9	266	35.0	76.2	91.4
51 x 102	9900289	19.0	8.6	2 - 4-1/2	102	194	101	313	46.0	85.9	114
63.5 x 127	9900298	29.5	14.5	2-1/2 - 4	127	223	114	378	53.8	108	140

M-279 METRIC

Size	S-279 Stock No.	Working Load Limit (t)*	Weight Each (kg.)	Dimensions (mm)							
				A** Thread	B	C	D	E	F	G	H
M6 x 13	1045753	.20	.03	M6 x 1.0	13.0	28.7	19.1	47.0	4.9	13.5	19.6
M8 x 13	1045789	.40	.05	M8 x 1.25	13.0	35.1	22.4	54.6	6.4	15.0	24.1
M10 x 17	1045833	.64	.07	M10 x 1.5	17.0	41.1	25.4	64.3	7.9	17.5	26.7
M12 x 20.5	1045869	1.0	.11	M12 x 1.75	20.5	49.5	30.2	77.7	9.7	23.1	32.3
M16 x 27	1045913	1.8	.25	M16 x 2.0	27.0	60.5	35.1	96.0	12.7	28.7	38.9
M20 x 30	1045995	2.5	.42	M20 x 2.5	30.0	70.0	38.1	108	16.0	35.1	43.4
M24 x 36	1046029	4.0	1.05	M24 x 3.0	36.0	95.5	51.0	142	22.4	46.0	58.4
M27 x 69.8	1046038	5.0	1.42	M27 x 3.0	69.8	107	57.1	183	24.6	52.3	59.7
M30 x 45	1046075	6.0	1.77	M30 x 3.5	45.0	114	63.5	171	25.4	58.0	69.3
M36 x 54	1046109	8.5	3.12	M36 x 4.0	54.0	140	76.0	207	31.8	70.0	83.3
M42 x 95.2	1046118	14.0	4.58	M42 x 4.5	95.2	159	88.9	266	35.0	76.2	91.4
M48 x 102	1046127	17.3	8.71	M48 x 5.0	102	194	101	313	46.0	85.9	114
M64 x 127	1046136	29.5	14.74	M64 x 6.0	127	223	114	378	53.8	108	140



Crosby® Wide Body Shackles & Vertical Clamps



- Forged alloy steel from 7 through 300 metric tons. Cast alloy steel from 400 through 1550 metric tons.
- Sizes 300 metric tons and smaller are proof tested to 2 times the Working Load Limit.
- Sizes 400 metric tons and larger are tested to 1.33 times Working Load Limit.
- Shackles, 30t and larger, are RFID EQUIPPED.
- Can be used to connect HIGH STRENGTH Synthetic Web Slings, HIGH STRENGTH Synthetic Round Slings or Wire Rope Slings.
- Increase in shackle bow radius provides minimum 58% gain in sling bearing surface and eliminates need for a thimble.
- Increases usable sling strength minimum of 15%.
- Pin is non-rotating, with weld-on handles for easier use (75t and larger).

- Approved for use at -40 degree C (-40 degree F) to 204 degree C (400 degree F).
- Bow and bolt are Certified to meet chamy impact testing of 42 joules (31 ft-lbs.) min. ave. at -20 degree C (-4 degree F).
- Shackles requiring ABS, Lloyds and other certifications are available upon special request and must be specified at time of order.
- Shackles 18t and larger have DNV Type Approval to Rules for Certification of Lifting Appliances and are produced in accordance with DNV MSA requirements. Databook is provided that includes required documents.
 - Serialization / Identification
 - Material Testing (Physical / Chemical / Charpy)
 - Proof Testing

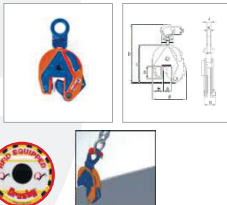


G-2160 Crosby® "Wide Body" Shackles

Working Load Limit (t)*	Stock No.		Weight Each (kg)	Dimensions (mm)											Effective Body Diameter
	G-2160	S-2160		A	B +/- 6.35	C	D +/- .5	E	G	H	J	K	P	R	
7	1021256	1021548	1.81	105	31.8	17.5	22.4	46.2	31.8	90.4	40.6	31.8	104	149	53.3
12.5	1021265	1021557	4.54	137	42.9	23.4	28.7	60.5	34.8	118	54.1	41.4	140	194	61.0
18	1021274	1021566	6.80	170	51.6	29.5	35.1	68.3	38.1	148	63.5	50.8	172	238	71.1
30	1021283	1021575	11.34	195	60.2	35.1	41.4	88.9	63.5	176	79.5	63.5	216	289	104
40	1021285	1021584	20.9	236	73.2	42.9	50.8	102	44.4	205	95.3	76.2	270	346	91.4
55	1021287	1021593	32.21	263	82.6	50.8	57.2	118	66.8	238	114	88.9	311	397	109
75	1021290	-	45	365	105	53.8	69.9	127	89.0	293	121	92.5	312	468	125
400	1021334	-	500	772	220	131	160	320	203	575	320	185	690	985	363
500	1021343	-	650	849	250	146	180	340	205	630	340	225	790	1085	376
600	1021352	-	860	916	275	158	200	394	330	700	370	247	865	1200	516
700	1021361	-	1109	990	300	167	215	433	223	735	400	270	940	1275	422
800	1021254	-	1368	1059	325	185	230	449	248	750	420	277	975	1323	457
900	1021389	-	1559	1112	350	198	250	478	330	757	440	293	1025	1387	569
1000	1021370	-	1824	1169	380	212	270	508	261	760	460	308	1075	1405	490
1250	1021272	-	2588	1278	432	233	300	573	354	1006	530	323	1175	1660	620
1550	1021281	-	3650	1588	465	282	320	616	318	1075	580	338	1316	1896	693

Universal - For Lifting in any Direction

- Available in capacities of .5 thru 30 metric tons (Higher Working Load Limits are available upon request).
- Wide variety of jaw openings available: 0 to 155mm.
- Welded alloy steel body for strength and smaller size. Forged alloy components, where required.
- Individually Proof Tested to 2 times the Working Load Limit with certification.
- Full 180° turning range for material transfer, turning or moving.
 - Lock open, lock closed ability with latch for pretension on material and then release of material.
 - Optional IP-5000 Stinger assembly available (see page 420). Allows for easy connection between the clamp and hoist hook.
 - Minimum WLL of 10% of Maximum WLL.
 - Maintenance replacement kits are available.
 - Manufactured by a ISO 9001 facility.
 - All sizes are RFID EQUIPPED.



Model IPU10

Model	Working Load Limit (t)*	IPU10 Stock No.	Weight Each (kg.)	Dimensions (mm)										
				Jaw A	B	C	D	E	F	G	H	J	K	
IPU10	0.5	2701675	1.9	0 - 16	44	128	228	40	115	41	28	-	11	
IPU10	1	2701663	2.4	0 - 20	45	139	222	40	126	41	38	-	11	
IPU10	2	2701677	8.5	0 - 35	78	201	372	70	190	61	55	-	16	
IPU10	3	2701665	14.8	0 - 40	100	253	445	75	225	78	60	-	20	
IPU10	4.5	2701667	16.0	0 - 40	100	253	445	75	232	82	65	-	20	
IPU10	6	2701669	24.0	0 - 50	126	302	525	80	292	84	95	44	20	
IPU10/J	6	2702469	30.5	50 - 100	126	302	525	80	342	84	95	44	20	
IPU10	9	2701671	29.5	0 - 50	126	325	557	80	310	92	105	44	20	
IPU10/J	9	2701673	30.5	50 - 100	126	325	562	80	360	92	105	44	20	
IPU10	12	2701679	57.0	0 - 54	160	391	623	80	331	117	137	41	25	
IPU10/J	12	2701681	59.0	54 - 108	178	439	673	80	415	117	137	41	25	
IPU10	16	2701683	72.0	5 - 64	178	465	734	88	397	119	153	45	25	
IPU10/J	16	2701685	85.0	64 - 128	208	521	790	88	472	119	161	45	25	
IPU10	22.5	2701687	127	5 - 80	222	554	855	110	470	136	186	49	25	
IPU10/J	22.5	2701689	130	80 - 155	253	628	930	110	575	136	196	49	25	
IPU10	30	2701691	153	5 - 80	222	545	860	110	470	152	186	54	30	
IPU10/J	30	2701693	165	80 - 155	250	620	935	110	565	152	196	54	30	

*Design Factor based on EN 13155 and ASME B30.20.

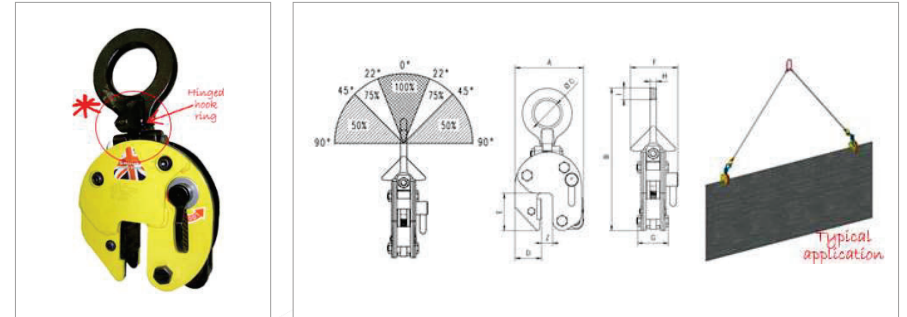
CY 'HINGED' VERTICAL PLATE CLAMPS



The CY plate clamps with hinged hook rings can be used for the safe handling of plate at various angles. It can lift plate from the horizontal and put down in the vertical. The hinged hook ring ensures adequate gripping pressure in every position, but the load capacity is reduced as seen in the diagram below showing the load / force capacities.

The main benefit of the CY hinged plate clamps is that longer plates can be lifted or handled, using two clamps on a two legged chain sling (as shown in illustration), thus eliminating the need for a spreader beam.

NB: The plate surface of the material must have a hardness level below HRC 30/Brinell 300.



Model	WLL Kg*	Jaw (Z) Capacity mm	A	B	C	D	E	F	G	H	HI	Weight Kgs**
Cyl	200-1000	0-20	126	270	50	49	70	95	95	12	23	4.6
Cyl	400-2000	0-32	192	382	80	75	96	132	92	20	30	14
Cyl	600-3000	0-32	192	382	80	75	96	132	92	20	30	14

*Per clamp **Weight per clamp with hook ring.

TPM PERMANENT LIFTING MAGNETS

TPM permanent lifting magnets are ideal tools for easy, quick and economical transport of heavy objects made from ferro-magnetic material. Typical operating areas are workshops and warehouses, loading and unloading of machines as well as construction of jigs and fixtures.

Model	Flat material		Round material		Dimensions					Weight		
	Maximum capacity SWL	Minimum thickness to obtain max. SWL	Maximum length of material mm	Maximum capacity SWL	Diameter	Maximum length of material mm	Tear off force	A	B		C	D
TPM 1	100	15	2000	50	200-300	2000	300	122	69	185	160	6
TPM 3	300	19	2500	150	200-300	2500	900	192	95	225	250	15.5
TPM 5	500	25	3000	250	200-300	3000	1500	232	120	270	250	29.5
TPM 8	800	35	3500	400	200-300	3500	2400	302	154	320	450	53
TPM 10	1000	40	3500	500	200-300	3500	3000	332	154	320	450	60



**Maximum lifting capacity is achieved by using mild steels with the noted minimum thickness.

Mild steel st37 - Fe 360 to BS EN 10 025 1990 (DIN 17100).