



# SKF INDUSTRIAL BEARINGS

RECOMMENDED SELLING PRICE LIST

EFFECTIVE  
FROM  
4<sup>TH</sup> DECEMBER  
2025



## SKF AUTHORIZED INDUSTRIAL DISTRIBUTORS: YOUR ONE-STOP DESTINATION FOR GENUINE INDUSTRIAL SOLUTIONS



Inventory Management

Technical Trainings

Root Cause Failure Analysis

Application Engineering

Condition Monitoring

Lubrication Management

Maintenance Expertise

Scan to view authorised industrial distributors



Newly  
Launched

# Designed for the challenging low speed applications



New series of SKF Spherical roller bearing optimized with improved lubrication flow and full interchangeability

## Trusted across various industrial applications

### General Industrial

- Overhead crane
- Trolley wheel
- Gantry crane



### Material Handling

- Conveyor pulley
- Stacker wheel



### Metal

- Slab caster wheel
- CCM support roll
- Trolley wheel
- Run out table



### Pulp and Paper

- Felt / wire roll
- Deflection drum
- Dryer
- Line shaft



### Food and Beverage, Agriculture

- Oil expeller
- Feed grinder
- Peeler machine



### Textile

- Soaper mangle
- Blow room
- Spinning
- Water separator



# SKF Spherical Roller Bearing VA9A1 series – customized for low speed, engineered for consistent performance



## Demonstrated advantages of the SKF VA9A1 series

-  Cooler operation with reduced energy loss
-  Up to 50% extended grease life
-  Accommodates misalignment and shaft deflection
-  Lower operating & maintenance costs
-  Longer bearing life through uniform load distribution
-  Increased wear resistance and reduced maintenance
-  Features to facilitate relubrication

## New SRB series- VA9A1: Speed-Specific Fit for Horizontal Applications

Designation	Limiting speed, rpm
22205 K/C3W33VA9A1	1700
22206 K/C3W33VA9A1	1400
22207 K/C3W33VA9A1	1200
22208 K/C3W33VA9A1	1100
22209 K/C3W33VA9A1	1000
22210 K/C3W33VA9A1	950
22211 K/C3W33VA9A1	850
22212 K/C3W33VA9A1	750
22213 K/C3W33VA9A1	700
22214 K/C3W33VA9A1	670
22215 K/C3W33VA9A1	630
22216 K/C3W33VA9A1	600
22217 K/C3W33VA9A1	560
22218 K/C3W33VA9A1	530
22219 K/C3W33VA9A1	480
22220 K/C3W33VA9A1	450
22222 K/C3W33VA9A1	400
22224 K/C3W33VA9A1	380
22226 K/C3W33VA9A1	360
22228 K/C3W33VA9A1	320
22230 K/C3W33VA9A1	300
22232 K/C3W33VA9A1	280

variants are available in straight and taper bore configurations, with normal and C3 clearance design



# India Distribution Center

A milestone in our continued journey towards customer centricity

- Increased stock availability
- Online tracking facility
- Faster delivery turnarounds
- Cutting-edge infrastructure
- Error-free support and service
- LEED certified logistics centre



# Comprehensive solutions from SKF

## SKF SEAL JET DD MACHINE

- High speed, flexibility and customer proximity with low investment
- Satisfy approximately 80% of standard industrial application demands



## SKF Food Line ball bearing units – Blue Range

- Completely sealed
- Lubricated for life
- Corrosion resistant
- Food grade components



## SKF ball bearing units – UC range

- Higher reliability through secure SKF locking system
- Widely available via the SKF distribution network
- Superior quality and long service life



## SKF ball bearing units – UC range

- Higher reliability through secure SKF locking system
- Widely available via the SKF distribution network
- Superior quality and long service life

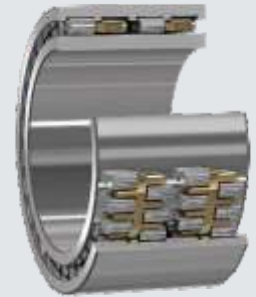
## High performance INSOCOAT bearings

- Fully interchangeable design
- Stable electrical performance
- Robust during handling, storage and operation



## SKF Agri Hub Disc Plough

This cost effective and ready-to-mount solution for Disc Plough applications comes with a robust sealing system to withstand highly contaminated environment and completes the competitive range of SKF Agri Hubs that are ready to mount and are virtually maintenance free



## SKF UC insert

- Easy to order, easy to replace
- UP to 16% better holding power on shafts
- Increased availability
- Interchangeable with JIS\* standard bearing
- Improved productivity





## Condition monitoring solutions from SKF

It helps you determining the condition of machinery while in operation to reduce the possibility of catastrophic failure



## Power transmission products and solutions from SKF

Helping your business reduce the total cost of ownership in the long-run

## Bearings, units and housings from SKF

Expertise in manufacturing virtually every type of ball and roller bearing



## Sealing solutions from SKF

Customized for your system performance



## Maintenance products from SKF

Help your bearing achieve its maximum service life and increase your plant productivity and efficiency by applying the right maintenance practices and using the correct tools



## Lubrication solutions from SKF

Help you realize the true potential of lubrication



## SKF Cooper Split Bearings

Designed for today, tomorrow and the years after



# Remote diagnostic services

Enabling world-class predictive maintenance for any industry, anywhere worldwide

Machine condition data is collected, either with an on-line system or with hand-held devices by skilled personnel – your own, a service partner or by SKF. Certified SKF analysts interpret and report on the data from Remote Diagnostic Centres using the most advanced, cloud-based technology and proprietary SKF signal analysis techniques. These subscription based services provide access to machine data and to expert SKF diagnostics from anywhere, any time.

## Key benefits :



### Cost savings

Avoid capital investments for hardware and software.



### Global access

View reports or actual vibration data plots any time day or night from any location.



### Data integrity

Automatic data uploading minimizes human error and establishes consistency and standardization throughout your organization.



### Expert analysis

SKF knowledge enables us to apply 110 years of accumulated experience to diagnose collected data and make recommendations for actions.



# Are you sure it's genuine?

Do you think that you may have accidentally bought a counterfeit SKF product?

The SKF Authenticate app includes clear instructions on how to photograph the product and automatically submit a request, all in one process. Dedicated SKF experts then review the information, authenticate the product and reply through email.

How to use authenticate application



Scan to download the SKF Authenticate app



Google  
Play Store



Apple  
App Store

The new SKF Authenticate 2.0 comes with scan code feature for scanning QR code on SKF product carton and distributor certificates.

If you have any questions, contact SKF at [genuine@skf.com](mailto:genuine@skf.com)



Extreme temperature bearings



Roller bearings



Solid oil bearing



Ball bearings

# Bearings



Plain bearings



# Tough job?

## Get a tough bearing.

New upgraded SKF Explorer self-aligning roller bearings can provide up to twice the service life as the original under tough operating conditions

Combining clean and homogenous high-quality steel with an improved heat treatment, new upgraded SKF Explorer bearings have a superior balance between hardness and toughness. This advancement gives upgraded SKF Explorer self-aligning roller bearings a higher degree of wear resistance, enabling as much as twice the service life as the original, in applications where there are high levels of contamination or poor lubrication conditions.

All standard SKF spherical roller bearings, CARB toroidal bearings and most spherical roller thrust bearings have now been upgraded to the SKF Explorer performance class.

For more information on the product and actual test results, download the brochure from [www.skf.com/upgrade](http://www.skf.com/upgrade).



**SKF India (Industrial) Limited**

Recommended Selling Price list for SKF Industrial Products

(Not to be photocopied and/or given to others without permission of the issuing authority)

• Approved by: CS • Issued by: GH

• RSP 2025 Edition No 1, Effective from 4th December 2025

Product Designation	RSP (INR)	Product Designation	RSP (INR)
ACBB-Angular Contact Ball Bearings		3205 A-2RS1	6,577
305701 C-2Z	5,636	3205 A-2RS1/C3	6,135
305702 C-2Z	5,841	3205 A-2RS1/MT33	6,213
305703 C-2Z	5,955	3205 A-2RS1TN9/MT33	5,944
305704 C-2Z	6,782	3205 A-2Z	6,386
305705 C-2Z	7,798	3205 A-2Z/C3	6,386
305706 C-2Z	7,912	3205 A-2Z/MT33	6,311
305707 C-2Z	8,256	3205 A-2ZTN9/MT33	5,423
305800 C-2Z	7,510	3205 ATN9	3,911
305801 C-2Z	7,843	3205 ATN9/C3	3,911
305802 C-2Z	8,125	3206 A	7,446
305803 C-2Z	8,748	3206 A/C3	7,446
305804 C-2Z	9,376	3206 A-2RS1	7,196
305805 C-2Z	9,427	3206 A-2RS1TN9/C3MT33	6,297
305806 C-2Z	9,749	3206 A-2RS1TN9/MT33	6,297
305807 C-2Z	12,040	3206 A-2Z	7,446
3200 A-2RS1TN9/MT33	4,766	3206 A-2Z/C3	7,446
3200 A-2ZTN9/MT33	4,221	3206 A-2Z/C3MT33	8,265
3200 ATN9	3,136	3206 A-2Z/MT33	8,265
3200 ATN9/C3	3,136	3206 A-2ZTN9/C3MT33	5,955
3201 A-2RS1TN9/MT33	4,372	3206 A-2ZTN9/MT33	5,955
3201 A-2ZTN9/MT33	4,303	3206 ATN9	4,874
3201 ATN9	3,416	3206 ATN9/C3	4,874
3201 ATN9/C3	3,416	3207 A	7,467
3202 A-2RS1TN9	4,352	3207 A/C3	7,467
3202 A-2RS1TN9/MT33	4,572	3207 A-2RS1	7,993
3202 A-2ZTN9	4,281	3207 A-2RS1/MT33	8,714
3202 A-2ZTN9/MT33	4,352	3207 A-2RS1TN9/MT33	8,067
3202 ATN9	3,571	3207 A-2Z	7,642
3202 ATN9/C3	3,571	3207 A-2ZTN9/C3MT33	7,609
3203 A-2RS1TN9	4,758	3207 A-2ZTN9/MT33	8,600
3203 A-2RS1TN9/C3MT33	5,736	3207 ATN9	5,671
3203 A-2RS1TN9/MT33	4,811	3207 ATN9/C3	5,671
3203 A-2ZTN9	4,381	3208 A	8,856
3203 A-2ZTN9/MT33	4,472	3208 A/C3	8,856
3203 ATN9	3,648	3208 A-2RS1	9,770
3203 ATN9/C3	3,648	3208 A-2RS1/C3	9,770
3204 A	6,106	3208 A-2RS1/MT33	10,258
3204 A/C3	6,106	3208 A-2RS1TN9/C3MT33	10,193
3204 A-2RS1	6,197	3208 A-2RS1TN9/MT33	10,193
3204 A-2RS1/MT33	6,283	3208 A-2Z	9,016
3204 A-2RS1TN9/MT33	5,423	3208 A-2Z/C3	9,016
3204 A-2Z	6,226	3208 A-2Z/C3MT33	10,821
3204 A-2ZTN9/MT33	5,129	3208 A-2ZTN9/MT33	9,016
3204 ATN9	3,817	3208 ATN9	7,382
3204 ATN9/C3	3,875	3208 ATN9/C3	7,382
3205 A	6,261	3209 A	10,802
3205 A/C3	6,261	3209 A/C3	10,802
		3209 A-2RS1	11,663
		3209 A-2RS1/MT33	11,340

Note : \*\*\* Price on request - subject to availability.

**SKF India (Industrial) Limited**

Recommended Selling Price list for SKF Industrial Products

(Not to be photocopied and/or given to others without permission of the issuing authority)

• Approved by: CS • Issued by: GH

• RSP 2025 Edition No 1, Effective from 4th December 2025

Product Designation	RSP (INR)	Product Designation	RSP (INR)
3209 A-2RS1TN9/MT33	11,720	3220 A/C3	55,914
3209 A-2Z	10,738	3222 A	86,000
3209 A-2Z/C3	10,738	3302 A-2RS1TN9/C3MT33	6,871
3209 A-2ZTN9/MT33	10,370	3302 A-2RS1TN9/MT33	6,428
3209 ATN9	8,230	3302 A-2ZTN9/MT33	5,487
3209 ATN9/C3	8,230	3302 ATN9	4,673
3210 A	12,236	3302 ATN9/C3	4,673
3210 A/C3	12,236	3303 A-2RS1TN9/MT33	6,711
3210 A-2RS1	16,643	3303 A-2ZTN9/MT33	5,937
3210 A-2RS1/MT33	18,504	3303 ATN9	4,881
3210 A-2RS1TN9/C3MT33	13,705	3303 ATN9/C3	4,881
3210 A-2RS1TN9/MT33	13,705	3304 A	7,183
3210 A-2Z	12,167	3304 A/C3	7,183
3210 A-2Z/C3	12,167	3304 A-2RS1TN9/C3MT33	7,657
3210 A-2ZTN9/MT33	12,484	3304 A-2RS1TN9/MT33	7,657
3210 ATN9	9,615	3304 A-2Z/C3	6,593
3210 ATN9/C3	9,615	3304 A-2ZTN9/MT33	6,773
3211 A	13,425	3304 ATN9	5,366
3211 A/C3	13,425	3304 ATN9/C3	5,366
3211 A-2RS1/C3	16,849	3305 A	7,970
3211 A-2Z	14,998	3305 A/C3	7,970
3211 ATN9	13,115	3305 A-2RS1TN9/C3MT33	8,447
3212 A	16,877	3305 A-2RS1TN9/MT33	8,447
3212 A/C3	16,877	3305 A-2Z	7,497
3212 A-2RS1	21,098	3305 A-2Z/C3	7,497
3212 A-2RS1/C3	21,098	3305 A-2ZTN9/MT33	7,470
3212 A-2RS1/MT33	23,923	3305 ANR	6,335
3212 A-2RS1TN9/MT33	20,674	3305 ATN9	6,283
3212 A-2Z/C3MT33	21,266	3305 ATN9/C3	6,283
3212 A-2Z/MT33	21,266	3306 A	9,553
3212 ATN9	17,080	3306 A/C3	9,553
3213 A	19,056	3306 A-2RS1	9,761
3213 A/C3	19,056	3306 A-2RS1TN9/C3MT33	9,806
3213 A-2Z/C3	23,602	3306 A-2RS1TN9/MT33	10,755
3214 A	22,905	3306 A-2Z	8,985
3214 A/C3	22,905	3306 A-2Z/C3	8,985
3214 A-2Z	25,198	3306 A-2Z/C3MT33	11,061
3214 A-2Z/MT33	28,064	3306 A-2ZTN9/MT33	9,792
3215 A	24,018	3306 ATN9	7,532
3215 A/C3	24,018	3306 ATN9/C3	7,532
3215 A-2Z/C3MT33	27,594	3307 A	11,159
3216 A	28,629	3307 A/C3	11,159
3216 A/C3	28,629	3307 A-2RS1	11,400
3217 A	33,236	3307 A-2RS1TN9/C3MT33	11,822
3217 A/C3	33,236	3307 A-2RS1TN9/MT33	11,822
3218 A	39,594	3307 A-2Z/C3	10,133
3218 A/C3	39,594	3307 A-2ZTN9/MT33	10,454
3219 A	51,977	3307 ATN9	8,798
3219 A/C3	51,531	3307 ATN9/C3	8,798
3220 A	55,914	3308 A	14,021

Note : \*\*\* Price on request - subject to availability.

**SKF India (Industrial) Limited**

Recommended Selling Price list for SKF Industrial Products

(Not to be photocopied and/or given to others without permission of the issuing authority)

• Approved by: CS • Issued by: GH

• RSP 2025 Edition No 1, Effective from 4th December 2025

Product Designation	RSP (INR)	Product Designation	RSP (INR)
3308 A/C3	14,021	3317 A/C3	76,444
3308 A-2RS1/C3	15,913	3318 A	91,982
3308 A-2RS1TN9/MT33	15,783	3318 A/C3	91,982
3308 A-2RS1TN9/MT33F8	14,390	3319 A	158,606
3308 A-2Z	12,731	3319 A/C3	158,606
3308 A-2Z/C3	12,731	3320 A	192,711
3308 A-2Z/C3MT33	12,891	3320 A/C3	192,711
3308 A-2ZTN9/MT33	13,958	3322 A	211,978
3308 ATN9	11,053	7200 BECBP	4,113
3308 ATN9/C3	11,053	7200 BEP	2,200
3308 DMA	34,102	7201 BECBP	4,131
3309 A	16,612	7201 BEGAP	4,324
3309 A/C3	16,612	7201 BEP	2,274
3309 A-2RS1	21,006	7202 BECBP	4,212
3309 A-2RS1/C3MT33	22,056	7202 BEP	2,250
3309 A-2RS1/MT33	22,056	7203 BE-2RZP	4,262
3309 A-2Z	16,718	7203 BECBM	7,147
3309 A-2Z/C3	16,718	7203 BECBP	4,458
3309 A-2Z/C3MT33	18,905	7203 BEP	2,243
3309 ANR	17,441	7204 BE-2RZP	3,996
3309 ATN9	15,630	7204 BECBJ	5,010
3309 ATN9/C3	15,630	7204 BECBM	8,425
3310 A	19,386	7204 BECBP	4,680
3310 A/C3	19,386	7204 BEGAP	5,148
3310 A-2RS1	22,616	7204 BEP	2,649
3310 A-2RS1/C3	22,616	7205 BE-2RZP	4,009
3310 A-2Z	20,160	7205 BECBM	9,248
3310 A-2Z/C3	20,160	7205 BECBP	4,868
3310 A-2Z/C3MT33	23,612	7205 BECBY	9,536
3310 ANR	23,070	7205 BEGAP	5,986
3310 ATN9	19,386	7205 BEP	2,922
3310 ATN9/C3	19,386	7206 BE-2RZP	4,443
3311 A	23,024	7206 BECBM	9,224
3311 A/C3	23,024	7206 BECBP	5,587
3311 ATN9/C3	15,236	7206 BEGAP	5,091
3312 A	26,294	7206 BEP	3,254
3312 A/C3	26,294	7207 BECBM	10,452
3312 A-2Z/C3	32,881	7207 BECBP	6,330
3312 A-2Z/C3MT33	36,909	7207 BEGAP	6,366
3313 A	32,128	7207 BEGBP	6,366
3313 A/C3	32,128	7207 BEP	4,113
3313 A-2Z/C3MT33	41,672	7208 BECBJ	8,990
3314 A	39,844	7208 BECBM	11,410
3314 A/C3	39,844	7208 BECBP	7,320
3314 A-2Z/C3	37,969	7208 BEP	4,892
3315 A	55,055	7209 BECBJ	10,427
3315 A/C3	55,055	7209 BECBM	13,234
3316 A	56,430	7209 BECBP	8,020
3316 A/C3	56,430	7209 BEGAP	7,267
3317 A	76,444	7209 BEP	5,366

Note : \*\*\* Price on request - subject to availability.

**SKF India (Industrial) Limited**

Recommended Selling Price list for SKF Industrial Products

(Not to be photocopied and/or given to others without permission of the issuing authority)

• Approved by: CS • Issued by: GH

• RSP 2025 Edition No 1, Effective from 4th December 2025

Product Designation	RSP (INR)	Product Designation	RSP (INR)
7210 BECBJ	10,919	7222 BECBM	70,346
7210 BECBM	13,860	7222 BECBP	49,840
7210 BECBP	8,646	7222 BEP	47,419
7210 BEP	6,054	7224 BCBM	85,329
7211 BE-2RZP	4,751	7224 BGAM	85,472
7211 BECBJ	13,390	7226 BCBM	100,887
7211 BECBM	15,451	7228 BCBM	128,334
7211 BECBP	10,301	7230 BCBM	178,390
7211 BEP	7,209	7301 BEP	4,130
7212 BECBJ	15,666	7302 BECBP	5,411
7212 BECBM	21,070	7302 BEGAP	5,327
7212 BECBP	12,394	7302 BEP	2,802
7212 BEP	8,779	7303 BECBP	5,760
7213 BECBJ	17,971	7303 BEP	2,807
7213 BECBM	23,500	7304 BE-2RZP	3,614
7213 BECBP	14,635	7304 BECBM	8,591
7213 BEP	10,674	7304 BECBP	5,705
7214 BECBJ	24,352	7304 BEP	2,952
7214 BECBM	26,020	7305 BE-2RZP	4,814
7214 BECBP	16,698	7305 BECBM	10,667
7214 BECBY	18,786	7305 BECBP	6,156
7214 BEP	12,614	7305 BECBY	5,129
7215 BECBJ	25,143	7305 BEP	3,103
7215 BECBM	28,497	7306 BE-2RZP	5,977
7215 BECBP	17,780	7306 BECBM	11,835
7215 BEGAP	14,529	7306 BECBP	7,007
7215 BEP	14,630	7306 BEP	3,853
7216 BECBJ	29,254	7307 BE-2RZP	4,948
7216 BECBM	31,913	7307 BECBM	12,804
7216 BECBP	21,275	7307 BECBP	7,571
7216 BECBY	17,730	7307 BEGAP	8,607
7216 BEGAF	29,254	7307 BEP	4,639
7216 BEGAP	15,602	7308 BE-2RZP	7,516
7216 BEP	17,019	7308 BECBJ	11,042
7217 BECBJ	34,299	7308 BECBM	16,699
7217 BECBM	36,442	7308 BECBP	9,637
7217 BECBP	25,724	7308 BEGAM	16,595
7217 BEP	20,650	7308 BEGAP	9,634
7218 BECBJ	38,005	7308 BEP	6,089
7218 BECBM	42,611	7309 BECBJ	13,192
7218 BECBP	30,711	7309 BECBM	20,055
7218 BEP	24,875	7309 BECBP	11,875
7219 BECBM	50,023	7309 BEGAP	11,625
7219 BECBP	32,396	7309 BEP	7,289
7219 BEP	30,014	7310 BE-2RZP	5,182
7220 BECBM	51,846	7310 BECBJ	16,865
7220 BECBP	39,883	7310 BECBM	23,438
7220 BEP	34,868	7310 BECBP	13,879
7221 BECBM	56,254	7310 BEGAM	23,131
7221 BEP	41,306	7310 BEGBP	13,880

Note : \*\*\* Price on request - subject to availability.

**SKF India (Industrial) Limited**

Recommended Selling Price list for SKF Industrial Products

(Not to be photocopied and/or given to others without permission of the issuing authority)

• Approved by: CS • Issued by: GH

• RSP 2025 Edition No 1, Effective from 4th December 2025

Product Designation	RSP (INR)	Product Designation	RSP (INR)
7310 BEP	9,176	7320 BECBP	82,632
7311 BECBJ	18,918	7320 BEP	74,369
7311 BECBM	27,998	7321 BECBM	116,857
7311 BECBP	16,079	7321 BECBP	81,958
7311 BEGAM	28,377	7321 BEP	64,245
7311 BEGAP	16,459	7322 BECBM	140,758
7311 BEGAY	18,444	7322 BECBP	118,121
7311 BEP	11,257	7322 BEP	106,308
7312 BECBJ	25,162	7324 BCBM	172,808
7312 BECBM	34,892	7326 BCBM	211,121
7312 BECBP	20,129	7328 BCBM	275,418
7312 BEGAM	34,593	7330 BCBM	316,418
7312 BEGAP	20,380	7406 BCBM	19,668
7312 BEP	14,092	7408 BCBM	23,203
7313 BECBJ	30,184	7409 BGM	52,176
7313 BECBM	36,488	7410 BCBM	41,215
7313 BECBP	24,818	QJ 203 N2MA/C2L	16,947
7313 BECCM	36,486	QJ 206 MA	8,932
7313 BEGAF	38,769	QJ 206 N2MA/C2L	14,123
7313 BEGAM	36,488	QJ 207 N2MA/C2L	15,251
7313 BEGAP	25,355	QJ 208 MA	10,454
7313 BEP	18,311	QJ 209 MA	11,263
7314 BECBJ	35,776	QJ 209 MA/C3	11,263
7314 BECBM	43,249	QJ 210 MA	12,596
7314 BECBP	29,415	QJ 210 MA/C3	12,596
7314 BEGAP	30,050	QJ 211 MA	16,027
7314 BEP	21,464	QJ 211 MA/C3	16,027
7315 BECBJ	47,061	QJ 211 N2MA/C2L	18,547
7315 BECBM	48,944	QJ 212 MA	20,623
7315 BECBP	36,602	QJ 212 MA/C3	20,623
7315 BEGAM	56,891	QJ 212 N2PHAS/C2L	21,875
7315 BEGAP	36,602	QJ 213 MA	23,223
7315 BEP	27,451	QJ 213 MA/C3	23,223
7316 BECBJ	51,316	QJ 214 N2MA	27,054
7316 BECBM	56,507	QJ 214 N2MA/C3	27,054
7316 BECBP	42,260	QJ 214 N2PHAS/C2L	26,189
7316 BEGAP	42,259	QJ 215 MA	27,833
7316 BEP	33,808	QJ 215 N2MA/C3	28,390
7317 BECBJ	63,363	QJ 216 MA	33,729
7317 BECBM	58,145	QJ 216 N2MA	34,403
7317 BECBP	50,690	QJ 217 MA	42,943
7317 BEP	40,551	QJ 217 N2MA	42,391
7318 BECBJ	76,881	QJ 217 N2MA/C3	42,391
7318 BECBM	69,151	QJ 218 N2MA	48,046
7318 BECBP	58,181	QJ 218 N2MA/C3	48,046
7318 BEP	53,860	QJ 219 N2MA	53,741
7319 BECBM	88,927	QJ 219 N2MA/C3	53,741
7319 BECBP	70,419	QJ 220 N2MA	66,617
7319 BEP	61,566	QJ 220 N2MA/C3	66,617
7320 BECBM	98,214	QJ 222 N2MA	81,642

Note : \*\*\* Price on request - subject to availability.

**SKF India (Industrial) Limited**

Recommended Selling Price list for SKF Industrial Products

(Not to be photocopied and/or given to others without permission of the issuing authority)

• Approved by: CS • Issued by: GH

• RSP 2025 Edition No 1, Effective from 4th December 2025

Product Designation	RSP (INR)	Product Designation	RSP (INR)
QJ 222 N2MA/C3	81,642	81109 TN	6,940
QJ 224 N2MA	100,138	81110 TN	7,530
QJ 224 N2MA/C3	100,138	81111 TN	9,761
QJ 226 N2MA	116,109	81112 TN	10,721
QJ 304 MA	7,922	81113 TN	12,033
QJ 306 MA	10,091	81114 TN	12,786
QJ 307 MA	12,520	81115 TN	14,386
QJ 307 N2MA/C2L	18,965	81116 TN	15,609
QJ 308 MA	14,094	81117 TN	17,202
QJ 308 MA/C3	14,094	81118 TN	20,872
QJ 308 N2MA/C2L	22,463	81120 TN	22,728
QJ 309 MA	17,486	81122 TN	37,493
QJ 309 MA/C2L	17,888	81124 TN	48,009
QJ 309 MA/C3	17,486	81206 TN	6,594
QJ 310 MA	20,348	81207 TN	8,705
QJ 311 MA	27,030	81208 TN	8,889
QJ 311 N2MA/C3	25,996	81209 TN	10,088
QJ 312 MA	32,824	81210 TN	11,899
QJ 312 MA/C3	32,824	81211 TN	15,795
QJ 313 MA	37,456	81212 TN	17,293
QJ 313 MA/C2L	37,081	81213 TN	17,864
QJ 314 MA	45,346	81214 TN	18,342
QJ 314 N2MA/C2L	48,845	81215 TN	21,343
QJ 315 N2MA	44,305	81216 TN	23,131
QJ 316 N2MA	63,702	81220 TN	39,035
QJ 316 N2MA/C3	63,702	81222 TN	68,889
QJ 317 N2MA	65,809	81224 TN	69,890
QJ 317 N2MA/C3	65,809	BC1B 320308 A	13,813
QJ 318 N2MA	78,374	HJ 216 EC	24,912
QJ 318 N2MA/C3	78,374	HJ 218 EC	26,614
QJ 319 N2MA	93,805	HJ 220 EC	28,800
QJ 320 N2MA	111,267	HJ 224 EC	31,899
QJ 336 N2MA	508,368	HJ 2311 EC	23,793
		HJ 310 EC	9,876
CARB Toroidal Roller Bearings		HJ 314 EC/VA301	15,946
		HJ 318 EC/VA301	22,413
C 4020 V/C3	62,169	HJ 320 EC/VA301	32,527
C 4024 V/C3	90,362	HJ 320 EC/VA301/45	***
C 4026 V/C3	97,281	HJ 326 EC/VA301	51,502
C 4030 V/C3	151,649	LBC4-0103	44,207
		LBC4-0108	45,724
CRB-Cylindrical Roller Bearings		LBC4-0114	52,290
		LBC4-8150 B	***
81102 TN	3,994	N 203 ECP	5,652
81103 TN	4,128	N 204 ECP	5,967
81104 TN	4,329	N 205 ECP	6,042
81105 TN	4,742	N 206 ECP	7,389
81106 TN	4,986	N 207 ECP	7,910
81107 TN	5,693	N 208 ECP	10,557
81108 TN	6,230	N 208 ECP/C3	10,557

Note : \*\*\* Price on request - subject to availability.

**SKF India (Industrial) Limited**

Recommended Selling Price list for SKF Industrial Products

(Not to be photocopied and/or given to others without permission of the issuing authority)

• Approved by: CS • Issued by: GH

• RSP 2025 Edition No 1, Effective from 4th December 2025

Product Designation	RSP (INR)	Product Designation	RSP (INR)
N 209 ECP	9,613	N 320 ECP	71,624
N 210 ECP	9,789	N 320 ECP/C3	71,624
N 211 ECP	17,119	N 321 ECP	84,669
N 212 ECP	17,154	N 321 ECP/C3	84,669
N 213 ECP	23,395	N 322 ECP	94,115
N 214 ECP	23,891	N 322 ECP/C3	94,115
N 215 ECP	25,516	NCF 2930 CV	51,824
N 215 ECP/C3	25,516	NCF 2952 CV	165,146
N 216 ECP	26,185	NCF 3004 CV	7,578
N 216 ECP/C3	26,185	NCF 3006 CV	8,397
N 217 ECP	29,531	NCF 3014 CV/C3	31,703
N 217 ECP/C3	29,531	NH 320 EMRD/C4VA301	***
N 218 ECP	45,016	NJ 2004 EV/C3	11,194
N 218 ECP/C3	45,016	NJ 202 ECP	3,645
N 219 ECP	49,326	NJ 202 ECP/C3	3,645
N 220 ECP	49,326	NJ 203 ECP	3,863
N 220 ECP/C3	49,326	NJ 203 ECP/C3	3,863
N 222 ECP	58,616	NJ 204 ECP	4,102
N 222 ECP/C3	58,616	NJ 204 ECP/C3	4,102
N 226 ECP	102,995	NJ 205 ECJ	6,015
N 304 ECP	7,424	NJ 205 ECJ/C3	6,015
N 305 ECP	7,549	NJ 205 ECP	4,135
N 306 ECP	8,072	NJ 205 ECP/C3	4,135
N 306 ECP/C3	8,072	NJ 206 ECJ	6,252
N 307 ECP	8,072	NJ 206 ECJ/C3	6,252
N 308 ECP	10,401	NJ 206 ECP	4,983
N 309 ECP	12,162	NJ 206 ECP/C3	4,983
N 310 ECP	15,637	NJ 207 ECJ	7,393
N 310 ECP/C3	15,637	NJ 207 ECJ/C3	7,393
N 311 ECP	18,110	NJ 207 ECP	5,934
N 312 ECJ/C3	41,194	NJ 207 ECP/C3	5,934
N 312 ECM	46,340	NJ 208 ECJ	8,196
N 312 ECP	26,235	NJ 208 ECJ/C3	8,196
N 312 ECP/C3	26,235	NJ 208 ECP	6,395
N 313 ECM	54,281	NJ 208 ECP/C3	6,395
N 313 ECP	25,011	NJ 209 ECJ	8,509
N 313 ECP/C3	25,011	NJ 209 ECJ/C3	8,509
N 314 ECM	60,972	NJ 209 ECP	7,411
N 314 ECP	28,696	NJ 209 ECP/C3	7,411
N 314 ECP/C3	28,696	NJ 210 ECJ	9,269
N 315 ECP	34,962	NJ 210 ECJ/C3	9,269
N 315 ECP/C3	34,962	NJ 210 ECP	7,898
N 316 ECP	40,102	NJ 210 ECP/C3	7,898
N 316 ECP/C3	40,102	NJ 211 ECJ	10,958
N 317 ECP	41,062	NJ 211 ECJ/C3	10,958
N 317 ECP/C3	41,062	NJ 211 ECP	9,474
N 318 ECP	42,955	NJ 211 ECP/C3	9,474
N 318 ECP/C3	42,955	NJ 212 ECJ	13,032
N 319 ECP	57,904	NJ 212 ECJ/C3	13,032
N 319 ECP/C3	57,904	NJ 212 ECP	10,378

Note : \*\*\* Price on request - subject to availability.

**SKF India (Industrial) Limited**

Recommended Selling Price list for SKF Industrial Products

(Not to be photocopied and/or given to others without permission of the issuing authority)

• Approved by: CS • Issued by: GH

• RSP 2025 Edition No 1, Effective from 4th December 2025

Product Designation	RSP (INR)	Product Designation	RSP (INR)
NJ 212 ECP/C3	10,378	NJ 2209 ECP/C3	9,660
NJ 213 ECJ	14,259	NJ 221 ECJ	54,650
NJ 213 ECJ/C3	14,259	NJ 221 ECJ/C3	54,650
NJ 213 ECP	13,681	NJ 221 ECP	40,174
NJ 213 ECP/C3	13,681	NJ 221 ECP/C3	40,174
NJ 214 ECJ	16,283	NJ 2210 ECP	9,885
NJ 214 ECJ/C3	16,283	NJ 2210 ECP/C3	9,885
NJ 214 ECP	14,197	NJ 2211 ECP	11,354
NJ 214 ECP/C3	14,197	NJ 2211 ECP/C3	11,354
NJ 215 ECJ	20,086	NJ 2212 ECJ	18,382
NJ 215 ECJ/C3	20,086	NJ 2212 ECP	14,861
NJ 215 ECP	17,424	NJ 2212 ECP/C3	14,861
NJ 215 ECP/C3	17,424	NJ 2213 ECP	17,874
NJ 216 ECJ	21,725	NJ 2213 ECP/C3	17,874
NJ 216 ECJ/C3	21,725	NJ 2214 ECP	19,185
NJ 216 ECP	18,371	NJ 2214 ECP/C3	19,185
NJ 216 ECP/C3	18,371	NJ 2215 ECJ	22,950
NJ 217 ECJ	29,281	NJ 2215 ECP	20,838
NJ 217 ECJ/C3	29,281	NJ 2215 ECP/C3	20,838
NJ 217 ECP	22,754	NJ 2216 ECJ	28,088
NJ 217 ECP/C3	22,754	NJ 2216 ECJ/C3	28,088
NJ 218 ECJ	36,130	NJ 2216 ECP	25,514
NJ 218 ECJ/C3	36,130	NJ 2216 ECP/C3	25,514
NJ 218 ECP	24,498	NJ 2217 ECP	28,272
NJ 218 ECP/C3	24,498	NJ 2217 ECP/C3	28,272
NJ 219 ECJ	38,218	NJ 2218 ECP	35,052
NJ 219 ECJ/C3	38,218	NJ 2218 ECP/C3	35,052
NJ 219 ECML/C3	54,503	NJ 2219 ECP	44,715
NJ 219 ECP	30,155	NJ 222 ECJ	48,910
NJ 220 ECJ	39,902	NJ 222 ECJ/C3	48,910
NJ 220 ECJ/C3	39,902	NJ 222 ECP	48,103
NJ 220 ECP	31,314	NJ 222 ECP/C3	48,103
NJ 220 ECP/C3	31,314	NJ 2220 ECJ/C3	39,336
NJ 2203 ECP	7,035	NJ 2220 ECP	47,952
NJ 2204 ECP	5,535	NJ 2220 ECP/C3	47,952
NJ 2204 ECP/C3	5,535	NJ 2222 ECP	65,288
NJ 2205 ECP	6,048	NJ 2222 ECP/C3	65,288
NJ 2205 ECP/C3	6,048	NJ 224 ECJ	58,024
NJ 2206 ECJ	7,991	NJ 224 ECJ/C3	58,024
NJ 2206 ECP	6,517	NJ 224 ECP	51,810
NJ 2206 ECP/C3	6,517	NJ 224 ECP/C3	51,810
NJ 2207 ECJ	9,011	NJ 226 ECJ	70,685
NJ 2207 ECP	7,561	NJ 226 ECJ/C3	70,685
NJ 2207 ECP/C3	7,561	NJ 226 ECP	60,885
NJ 2208 ECJ	10,803	NJ 226 ECP/C3	60,885
NJ 2208 ECJ/C3	10,803	NJ 228 ECJ	88,860
NJ 2208 ECP	8,794	NJ 228 ECJ/C3	88,860
NJ 2208 ECP/C3	8,794	NJ 230 ECJ	111,298
NJ 2209 ECJ	10,796	NJ 2304 ECP	7,136
NJ 2209 ECP	9,660	NJ 2304 ECP/C3	7,136

Note : \*\*\* Price on request - subject to availability.

**SKF India (Industrial) Limited**

Recommended Selling Price list for SKF Industrial Products

(Not to be photocopied and/or given to others without permission of the issuing authority)

• Approved by: CS • Issued by: GH

• RSP 2025 Edition No 1, Effective from 4th December 2025

Product Designation	RSP (INR)	Product Designation	RSP (INR)
NJ 2305 ECML/C3	23,894	NJ 2318 ECJ/C3	83,083
NJ 2305 ECP	7,374	NJ 2318 ECML/C3	*** #
NJ 2305 ECP/C3	7,374	NJ 2318 ECML/C4	*** #
NJ 2305 ECP/C4	8,597	NJ 2319 ECJ	90,345
NJ 2306 ECML/C3	24,066	NJ 2320 ECJ	106,709
NJ 2306 ECP	8,984	NJ 2320 ECJ/C3	106,709
NJ 2306 ECP/C3	8,984	NJ 2324 ECML/C3	127,593
NJ 2307 ECP	11,005	NJ 303 ECP	4,723
NJ 2307 ECP/C3	11,005	NJ 304 ECP	5,040
NJ 2308 ECJ	14,407	NJ 304 ECP/C3	5,040
NJ 2308 ECJ/C3	14,407	NJ 305 ECJ	9,187
NJ 2308 ECML	24,336	NJ 305 ECJ/C3	9,187
NJ 2308 ECML/C3	24,336	NJ 305 ECP	5,060
NJ 2308 ECP	12,977	NJ 305 ECP/C3	5,060
NJ 2308 ECP/C3	12,977	NJ 305 ECP/C4	5,912
NJ 2308 ECP/C4	15,573	NJ 306 ECJ	9,365
NJ 2309 ECML/C3	28,337	NJ 306 ECJ/C3	9,365
NJ 2309 ECP	15,766	NJ 306 ECP	6,846
NJ 2309 ECP/C3	15,766	NJ 306 ECP/C3	6,846
NJ 2309 ECP/C4	17,387	NJ 307 ECJ	9,592
NJ 2310 ECML/C3	33,958	NJ 307 ECJ/C3	9,592
NJ 2310 ECP	18,734	NJ 307 ECM	24,534
NJ 2310 ECP/C3	18,734	NJ 307 ECP	7,205
NJ 2311 ECML/C3	35,451	NJ 307 ECP/C3	7,205
NJ 2311 ECML/C4	44,402	NJ 308 ECJ	10,258
NJ 2311 ECP	22,799	NJ 308 ECJ/C3	10,258
NJ 2311 ECP/C3	22,799	NJ 308 ECM	21,970
NJ 2312 ECML	45,007	NJ 308 ECP	8,192
NJ 2312 ECML/C3	45,007	NJ 308 ECP/C3	8,192
NJ 2312 ECML/C4	45,007	NJ 309 ECJ	11,756
NJ 2312 ECP	27,572	NJ 309 ECJ/C3	11,756
NJ 2312 ECP/C3	27,572	NJ 309 ECP	9,656
NJ 2312 ECP/C4	32,190	NJ 309 ECP/C3	9,656
NJ 2313 ECML/C3	45,007	NJ 310 ECJ	14,720
NJ 2313 ECP	32,530	NJ 310 ECJ/C3	14,720
NJ 2313 ECP/C3	32,530	NJ 310 ECM	30,353
NJ 2313 ECP/C4	37,983	NJ 310 ECM/C3	30,353
NJ 2314 ECML/C4	63,958	NJ 310 ECM/C4	37,407
NJ 2314 ECP	39,686	NJ 310 ECP	11,624
NJ 2314 ECP/C3	39,686	NJ 310 ECP/C3	11,624
NJ 2314 ECP/C4	43,762	NJ 310 ECP/C4	14,168
NJ 2315 ECML/C3	76,709	NJ 311 ECJ	17,172
NJ 2315 ECP	50,501	NJ 311 ECJ/C3	17,172
NJ 2315 ECP/C3	50,501	NJ 311 ECM	30,845
NJ 2315 ECP/C4	62,285	NJ 311 ECP	15,630
NJ 2316 ECP	60,537	NJ 311 ECP/C3	15,630
NJ 2316 ECP/C3	60,537	NJ 312 ECJ	20,991
NJ 2317 ECP	61,586	NJ 312 ECJ/C3	20,991
NJ 2317 ECP/C3	61,586	NJ 312 ECP	18,430
NJ 2318 ECJ	83,083	NJ 312 ECP/C3	18,430

Note : \*\*\* Price on request - subject to availability.

**SKF India (Industrial) Limited**

Recommended Selling Price list for SKF Industrial Products

(Not to be photocopied and/or given to others without permission of the issuing authority)

• Approved by: CS • Issued by: GH

• RSP 2025 Edition No 1, Effective from 4th December 2025

Product Designation	RSP (INR)	Product Designation	RSP (INR)
NJ 312 ECP/C4	21,462	NNF 5011 ADB-2LSV	27,026
NJ 313 ECJ	25,028	NNF 5012 ADB-2LSV	36,682
NJ 313 ECJ/C3	25,028	NNF 5013 ADB-2LSV	37,687
NJ 313 ECM/C4	45,712	NNF 5014 ADB-2LSV	37,978
NJ 313 ECP	22,111	NNF 5014 ADB-2LSV/C3	37,978
NJ 313 ECP/C3	22,111	NNF 5015 ADB-2LSV	38,669
NJ 313 ECP/C4	26,534	NNF 5016 ADA-2LSV	50,279
NJ 314 ECJ	29,030	NNF 5017 ADA-2LSV	64,440
NJ 314 ECJ/C3	29,030	NNF 5018 ADA-2LSV	75,226
NJ 314 ECM	52,718	NNF 5020 ADA-2LSV	81,843
NJ 314 ECP	26,163	NNF 5022 ADA-2LSV	109,648
NJ 314 ECP/C3	26,163	NNF 5024 ADA-2LSV	110,940
NJ 315 ECJ	33,361	NU 1005	6,742
NJ 315 ECJ/C3	33,361	NU 1006	7,026
NJ 315 ECP	30,358	NU 1007 ECP	8,669
NJ 315 ECP/C3	30,358	NU 1007 ECP/C3	8,669
NJ 316 ECJ	41,670	NU 1008 ML	13,292
NJ 316 ECJ/C3	41,670	NU 1009 ECP	11,827
NJ 316 ECP	34,025	NU 1009 ECP/C3	11,827
NJ 316 ECP/C3	34,025	NU 1010 ECP	16,417
NJ 316 ECP/C4	42,107	NU 1010 ML	15,958
NJ 317 ECJ	56,829	NU 1010 ML/C3	15,958
NJ 317 ECJ/C3	56,829	NU 1011 ECP	15,093
NJ 317 ECP	39,825	NU 1012 ML	20,841
NJ 317 ECP/C3	39,825	NU 1013 ML	24,749
NJ 318 ECJ	57,472	NU 1014 ML	25,779
NJ 318 ECJ/C3	57,472	NU 1014 ML/C3	25,779
NJ 318 ECP	44,257	NU 1015 ML	26,679
NJ 318 ECP/C3	44,257	NU 1015 ML/C3	26,679
NJ 319 ECJ	58,009	NU 1016	26,700
NJ 319 ECJ/C3	58,009	NU 1016 ECML	46,326
NJ 319 ECP	73,375	NU 1016/C3	26,700
NJ 319 ECP/C3	73,375	NU 1017 ML	43,421
NJ 320 ECJ	73,375	NU 1018 ML	32,021
NJ 320 ECJ/C3	73,375	NU 1019 ML	35,227
NJ 320 ECP	75,357	NU 1020 M/C3	38,881
NJ 320 ECP/C3	75,357	NU 1020 ML	38,881
NJ 321 ECJ	84,442	NU 1020 ML/C3	38,881
NJ 321 ECJ/C3	84,442	NU 1021 ML	48,532
NJ 322 ECJ	107,263	NU 1021 ML/C3	48,532
NJ 322 ECJ/C3	107,263	NU 1022 M/C3	53,948
NJ 324 ECJ	119,877	NU 1022 ML	46,278
NJ 324 ECJ/C3	119,877	NU 1022 ML/C3	46,278
NNF 5004 ADB-2LSV	18,991	NU 1024 ML	46,278
NNF 5005 ADB-2LSV	19,156	NU 1024 ML/C3	46,278
NNF 5006 ADB-2LSV	19,873	NU 1026 ML	66,325
NNF 5007 ADB-2LSV	22,056	NU 1026 ML/C3	66,325
NNF 5008 ADB-2LSV	22,255	NU 1028 ML	76,566
NNF 5009 ADB-2LSV	24,023	NU 1030 M/C3	70,515
NNF 5010 ADB-2LSV	25,676	NU 1030 ML	79,268

Note : \*\*\* Price on request - subject to availability.

**SKF India (Industrial) Limited**

Recommended Selling Price list for SKF Industrial Products

(Not to be photocopied and/or given to others without permission of the issuing authority)

• Approved by: CS • Issued by: GH

• RSP 2025 Edition No 1, Effective from 4th December 2025

Product Designation	RSP (INR)	Product Designation	RSP (INR)
NU 1030 ML/C3	79,268	NU 209 ECP	6,527
NU 1032 ML	105,486	NU 209 ECP/C3	6,527
NU 1032 ML/C3	105,486	NU 210 ECJ	8,889
NU 1034 ML	142,731	NU 210 ECJ/C3	8,889
NU 1034 ML/C3	142,731	NU 210 ECKP/C3	11,479
NU 1036 ML	151,341	NU 210 ECM	26,798
NU 1036 ML/C3	151,341	NU 210 ECM/C3	26,798
NU 1038 ML	162,927	NU 210 ECML	11,123
NU 1038 ML/C3	162,927	NU 210 ECML/C3	11,123
NU 1040 ML	169,453	NU 210 ECP	7,501
NU 1040 ML/C3	169,453	NU 210 ECP/C3	7,501
NU 1044 ML	220,074	NU 211 ECJ	10,053
NU 202 ECP	3,050	NU 211 ECJ/C3	10,053
NU 202 ECP/C3	3,050	NU 211 ECM	26,798
NU 203 ECP	3,375	NU 211 ECM/C3	26,798
NU 203 ECP/C3	3,375	NU 211 ECML	11,134
NU 204 ECP	3,464	NU 211 ECML/C3	11,134
NU 204 ECP/C3	3,464	NU 211 ECP	8,242
NU 205 ECJ/C3M	5,833	NU 211 ECP/C3	8,242
NU 205 ECML/C3	22,198	NU 212 ECJ	12,098
NU 205 ECP	3,720	NU 212 ECJ/C3	12,098
NU 205 ECP/C3	3,720	NU 212 ECM	27,260
NU 206 ECJ	6,111	NU 212 ECM/C3	27,260
NU 206 ECJ/C3	6,111	NU 212 ECML	27,260
NU 206 ECKP/C3	6,503	NU 212 ECP	9,407
NU 206 ECP	4,360	NU 212 ECP/C3	9,407
NU 206 ECP/C3	4,360	NU 213 ECJ	14,493
NU 207 ECJ	6,632	NU 213 ECJ/C3	14,493
NU 207 ECJ/C3	6,632	NU 213 ECM	27,986
NU 207 ECKP/C3	7,661	NU 213 ECM/C3	27,986
NU 207 ECM	15,972	NU 213 ECML	27,986
NU 207 ECM/C3	15,972	NU 213 ECML/C3	27,986
NU 207 ECML/C3	15,972	NU 213 ECP	11,287
NU 207 ECP	5,284	NU 213 ECP/C3	7,006
NU 207 ECP/C3	5,284	NU 214 ECJ	14,906
NU 208 ECJ	7,387	NU 214 ECJ/C3	14,906
NU 208 ECJ/C3	7,387	NU 214 ECM	33,072
NU 208 ECKP/C3	8,173	NU 214 ECM/C3	33,072
NU 208 ECM	16,964	NU 214 ECML	29,496
NU 208 ECM/C3	17,016	NU 214 ECML/C3	29,496
NU 208 ECML	18,954	NU 214 ECP	12,456
NU 208 ECML/C3	18,954	NU 214 ECP/C3	12,456
NU 208 ECP	5,478	NU 215 ECJ	16,897
NU 208 ECP/C3	5,478	NU 215 ECJ/C3	16,897
NU 209 ECJ	8,469	NU 215 ECM	32,883
NU 209 ECJ/C3	8,469	NU 215 ECM/C3	32,883
NU 209 ECM	24,632	NU 215 ECML	32,883
NU 209 ECM/C3	24,632	NU 215 ECP	15,490
NU 209 ECML	10,119	NU 215 ECP/C3	15,490
NU 209 ECML/C3	10,119	NU 216 ECJ	18,853

Note : \*\*\* Price on request - subject to availability.

**SKF India (Industrial) Limited**

Recommended Selling Price list for SKF Industrial Products

(Not to be photocopied and/or given to others without permission of the issuing authority)

• Approved by: CS • Issued by: GH

• RSP 2025 Edition No 1, Effective from 4th December 2025

Product Designation	RSP (INR)	Product Designation	RSP (INR)
NU 216 ECJ/C3	18,853	NU 2208 ECJ	7,503
NU 216 ECM	34,605	NU 2208 ECJ/C3	7,503
NU 216 ECM/C3	34,605	NU 2208 ECP	8,512
NU 216 ECML	34,488	NU 2208 ECP/C3	8,512
NU 216 ECML/C3	34,488	NU 2209 ECJ	9,431
NU 216 ECP	16,140	NU 2209 ECJ/C3	9,431
NU 216 ECP/C3	16,140	NU 2209 ECP	9,066
NU 217 ECJ	23,358	NU 2209 ECP/C3	9,066
NU 217 ECJ/C3	23,358	NU 221 ECJ	48,093
NU 217 ECM	35,272	NU 221 ECJ/C3	48,093
NU 217 ECM/C3	35,272	NU 221 ECP	36,246
NU 217 ECML	35,272	NU 221 ECP/C3	36,246
NU 217 ECML/C3	35,272	NU 2210 ECJ	10,203
NU 217 ECP	20,705	NU 2210 ECJ/C3	10,203
NU 217 ECP/C3	20,705	NU 2210 ECML/C3	22,203
NU 218 ECJ	27,704	NU 2210 ECP	10,365
NU 218 ECJ/C3	27,704	NU 2210 ECP/C3	10,365
NU 218 ECM	35,444	NU 2211 ECJ	14,250
NU 218 ECM/C3	35,444	NU 2211 ECJ/C3	14,250
NU 218 ECML	36,263	NU 2211 ECP	11,213
NU 218 ECML/C3	36,263	NU 2211 ECP/C3	11,213
NU 218 ECP	24,618	NU 2212 ECJ	16,297
NU 218 ECP/C3	24,618	NU 2212 ECJ/C3	16,297
NU 219 ECJ	30,998	NU 2212 ECML/C3	34,488
NU 219 ECJ/C3	30,998	NU 2212 ECP	14,322
NU 219 ECM	57,178	NU 2212 ECP/C3	14,322
NU 219 ECM/C3	57,178	NU 2213 ECJ	19,615
NU 219 ECP	28,800	NU 2213 ECJ/C3	19,615
NU 219 ECP/C3	28,800	NU 2213 ECP	15,640
NU 220 ECJ	37,945	NU 2213 ECP/C3	15,640
NU 220 ECJ/C3	37,945	NU 2214 ECJ	27,369
NU 220 ECM	64,101	NU 2214 ECJ/C3	27,369
NU 220 ECM/C3	64,101	NU 2214 ECML/C3	39,739
NU 220 ECML	55,859	NU 2214 ECP	17,477
NU 220 ECML/C3	55,859	NU 2214 ECP/C3	17,477
NU 220 ECP	28,965	NU 2215 ECJ	28,112
NU 220 ECP/C3	28,965	NU 2215 ECJ/C3	28,112
NU 2203 ECP	4,713	NU 2215 ECML/C4	***
NU 2204 ECP	5,263	NU 2216 ECJ	30,231
NU 2204 ECP/C3	5,263	NU 2216 ECJ/C3	30,231
NU 2205 ECP	5,311	NU 2216 ECML/C3	39,870
NU 2205 ECP/C3	5,311	NU 2216 ECML/P63	49,582
NU 2206 ECJ	6,034	NU 2216 ECP	23,693
NU 2206 ECJ/C3	6,034	NU 2216 ECP/C3	23,693
NU 2206 ECP	6,030	NU 2217 ECJ	31,392
NU 2206 ECP/C3	6,030	NU 2217 ECJ/C3	31,392
NU 2207 ECJ	6,957	NU 2217 ECML/C3	42,752
NU 2207 ECJ/C3	6,957	NU 2217 ECP	27,979
NU 2207 ECP	7,203	NU 2217 ECP/C3	27,979
NU 2207 ECP/C3	7,203	NU 2218 ECJ	33,526

Note : \*\*\* Price on request - subject to availability.

**SKF India (Industrial) Limited**

Recommended Selling Price list for SKF Industrial Products

(Not to be photocopied and/or given to others without permission of the issuing authority)

• Approved by: CS • Issued by: GH

• RSP 2025 Edition No 1, Effective from 4th December 2025

Product Designation	RSP (INR)		Product Designation	RSP (INR)	
NU 2218 ECJ/C3	33,526		NU 230 ECJ/C3	***	#
NU 2218 ECM	41,373		NU 230 ECM	***	#
NU 2218 ECML/C3	46,519		NU 230 ECM/C3	***	#
NU 2218 ECP	32,781		NU 230 ECML	***	#
NU 2218 ECP/C3	32,781		NU 2304 ECP	7,098	
NU 2219 ECJ	44,388		NU 2305 ECJ	14,887	
NU 2219 ECJ/C3	44,388		NU 2305 ECP	7,098	
NU 2219 ECP	35,625		NU 2305 ECP/C3	7,098	
NU 2219 ECP/C3	35,625		NU 2306 ECP	8,351	
NU 222 ECJ	46,744		NU 2306 ECP/C3	8,351	
NU 222 ECJ/C3	46,744		NU 2307 ECP	10,120	
NU 222 ECM	64,101		NU 2307 ECP/C3	10,120	
NU 222 ECM/C3	64,101		NU 2308 ECJ	13,946	
NU 222 ECML	60,288		NU 2308 ECJ/C3	13,946	
NU 222 ECML/C3	60,288		NU 2308 ECML	30,050	
NU 222 ECP	37,632		NU 2308 ECML/C3	30,050	
NU 222 ECP/C3	37,632		NU 2308 ECP	12,425	
NU 2220 ECJ	71,034		NU 2308 ECP/C3	12,425	
NU 2220 ECJ/C3	71,034		NU 2309 ECML	29,010	
NU 2220 ECM	60,888		NU 2309 ECML/C3	29,010	
NU 2220 ECM/C3	60,888		NU 2309 ECP	14,381	
NU 2220 ECML	81,184		NU 2309 ECP/C3	14,381	
NU 2220 ECML/C3	81,184		NU 2310 ECML	32,305	
NU 2220 ECP	44,945		NU 2310 ECML/C3	32,305	
NU 2220 ECP/C3	44,945		NU 2310 ECP	14,656	
NU 2222 ECJ/C3	73,807		NU 2310 ECP/C3	14,656	
NU 2222 ECML	108,188		NU 2311 ECML	41,471	
NU 2222 ECML/C3	108,188		NU 2311 ECML/C3	41,471	
NU 2222 ECP	62,981		NU 2311 ECP	19,333	
NU 2222 ECP/C3	62,981		NU 2311 ECP/C3	19,333	
NU 2224 ECML	136,054		NU 2312 ECM	55,979	
NU 2224 ECML/C3	136,054		NU 2312 ECM/C3	55,979	
NU 2224 ECP	81,750		NU 2312 ECML	41,471	
NU 2224 ECP/C3	81,750		NU 2312 ECML/C3	41,471	
NU 2226 ECML	143,374		NU 2312 ECP	26,875	
NU 2226 ECML/C3	143,374		NU 2312 ECP/C3	26,875	
NU 2234 ECML	268,950		NU 2313 ECML	60,069	
NU 224 ECJ/C3	55,871		NU 2313 ECML/C3	60,069	
NU 224 ECM/C3	***	#	NU 2313 ECP	26,847	
NU 224 ECML/C3	61,260		NU 2313 ECP/C3	26,847	
NU 224 ECP	***	#	NU 2314 ECML	71,581	
NU 224 ECP/C3	***	#	NU 2314 ECML/C3	71,581	
NU 226 ECJ	70,448		NU 2314 ECP	35,838	
NU 226 ECJ/C3	70,448		NU 2314 ECP/C3	35,838	
NU 226 ECP	43,956		NU 2315 ECJ	55,286	
NU 226 ECP/C3	43,956		NU 2315 ECJ/C3	55,286	
NU 228 ECJ	91,523		NU 2315 ECP	43,356	
NU 228 ECJ/C3	91,523		NU 2315 ECP/C3	43,356	
NU 2292 MA/VA454	***	#	NU 2316 ECML	89,091	
NU 230 ECJ	***	#	NU 2316 ECML/C3	89,091	

Note : \*\*\* Price on request - subject to availability.

**SKF India (Industrial) Limited**

Recommended Selling Price list for SKF Industrial Products

(Not to be photocopied and/or given to others without permission of the issuing authority)

• Approved by: CS • Issued by: GH

• RSP 2025 Edition No 1, Effective from 4th December 2025

Product Designation	RSP (INR)	Product Designation	RSP (INR)
NU 2316 ECP	51,086	NU 309 ECM/C3	24,933
NU 2316 ECP/C3	51,086	NU 309 ECML	24,933
NU 2317 ECJ	69,944	NU 309 ECML/C3	24,933
NU 2317 ECJ/C3	69,944	NU 309 ECP	8,722
NU 2317 ECP	60,707	NU 309 ECP/C3	8,722
NU 2318 ECJ	76,353	NU 310 ECJ	11,364
NU 2318 ECJ/C3	76,353	NU 310 ECJ/C3	11,364
NU 2318 ECP	67,218	NU 310 ECM	24,933
NU 2318 ECP/C3	67,218	NU 310 ECM/C3	24,933
NU 2319 ECJ	87,987	NU 310 ECM/C4	29,216
NU 2319 ECJ/C3	87,987	NU 310 ECML	24,933
NU 2319 ECP	68,912	NU 310 ECML/C3	24,933
NU 2319 ECP/C3	68,912	NU 310 ECP	10,504
NU 2320 ECJ	106,337	NU 310 ECP/C3	10,504
NU 2320 ECJ/C3	106,337	NU 311 ECJ	13,036
NU 2320 ECP	85,709	NU 311 ECJ/C3	13,036
NU 2320 ECP/C3	85,709	NU 311 ECM	28,717
NU 2324 ECML	191,130	NU 311 ECM/C3	28,717
NU 2328 ECML/C3	***	NU 311 ECML/C3	28,717
NU 236 ECM	182,652	NU 311 ECP	12,578
NU 240 ECM	236,835	NU 311 ECP/C3	12,578
NU 244 ECML/C3	313,688	NU 312 ECJ	15,052
NU 303 ECP	4,663	NU 312 ECJ/C3	15,052
NU 304 ECP	4,799	NU 312 ECM	29,259
NU 304 ECP/C3	4,799	NU 312 ECM/C3	29,259
NU 305 ECJ	6,522	NU 312 ECML	29,259
NU 305 ECJ/C3	6,522	NU 312 ECP	14,952
NU 305 ECP	5,279	NU 312 ECP/C3	14,952
NU 305 ECP/C3	5,279	NU 313 ECJ	18,131
NU 306 ECJ	6,741	NU 313 ECJ/C3	18,131
NU 306 ECJ/C3	6,741	NU 313 ECM	38,304
NU 306 ECP	5,676	NU 313 ECM/C3	38,304
NU 306 ECP/C3	5,676	NU 313 ECML	35,112
NU 307 ECJ	7,871	NU 313 ECML/C3	35,112
NU 307 ECJ/C3	7,871	NU 313 ECP	17,460
NU 307 ECM	19,789	NU 313 ECP/C3	17,460
NU 307 ECM/C3	19,789	NU 314 ECJ	21,230
NU 307 ECP	6,395	NU 314 ECJ/C3	21,230
NU 307 ECP/C3	6,395	NU 314 ECM	24,548
NU 308 ECJ	7,546	NU 314 ECM/C3	37,737
NU 308 ECJ/C3	7,546	NU 314 ECP	13,413
NU 308 ECM	16,619	NU 314 ECP/C3	13,413
NU 308 ECM/C3	16,619	NU 315 ECJ	27,721
NU 308 ECML	16,619	NU 315 ECJ/C3	27,721
NU 308 ECML/C3	16,619	NU 315 ECM	***
NU 308 ECP	7,226	NU 315 ECM/C3	***
NU 308 ECP/C3	7,226	NU 315 ECML	40,749
NU 309 ECJ	10,987	NU 315 ECML/C3	40,749
NU 309 ECJ/C3	10,987	NU 315 ECP	13,958
NU 309 ECM	24,933	NU 315 ECP/C3	13,958

Note : \*\*\* Price on request - subject to availability.

**SKF India (Industrial) Limited**

Recommended Selling Price list for SKF Industrial Products

(Not to be photocopied and/or given to others without permission of the issuing authority)

• Approved by: CS • Issued by: GH

• RSP 2025 Edition No 1, Effective from 4th December 2025

Product Designation	RSP (INR)		Product Designation	RSP (INR)	
NU 316 ECJ	***	#	NU 322 ECP/C3	59,634	#
NU 316 ECJ/C3	21,272	#	NU 324 ECJ	96,556	
NU 316 ECM	***	#	NU 324 ECJ/C3	96,556	
NU 316 ECM/C3	***	#	NU 324 ECM	***	#
NU 316 ECML/C3	46,937		NU 324 ECM/C3	***	#
NU 316 ECP	17,800	#	NU 324 ECP	***	#
NU 316 ECP/C3	17,800	#	NU 324 ECP/C3	49,298	#
NU 317 ECJ	32,991		NU 326 ECJ	121,100	
NU 317 ECJ/C3	32,991		NU 326 ECJ/C3	121,100	
NU 317 ECM	***	#	NU 326 ECM	***	#
NU 317 ECM/C3	***	#	NU 326 ECM/C3	***	#
NU 317 ECML/C3	53,292		NU 326 ECP	70,214	
NU 317 ECP	22,128	#	NU 326 ECP/C3	70,214	
NU 317 ECP/C3	22,128	#	NU 326 EM/C4VA301	***	#
NU 318 ECJ	36,811	#	NU 328 ECJ	151,527	
NU 318 ECJ/C3	36,811	#	NU 328 ECJ/C3	151,527	
NU 318 ECM	40,910	#	NU 328 EMRD/C4VA301	***	#
NU 318 ECM/C3	***	#	NU 330 ECM	***	#
NU 318 ECML	63,311		NU 330 ECM/C3	***	#
NU 318 ECP	23,667	#	NU 330 ECMA/P64VA301/45	***	#
NU 318 ECP/C3	23,667	#	NU 336 ECM/C3	505,888	
NU 319 ECJ	40,359	#	NUP 203 ECP	5,824	
NU 319 ECJ/C3	40,359	#	NUP 204 ECP	5,824	
NU 319 ECM	43,014	#	NUP 204 ECP/C3	5,824	
NU 319 ECM/C3	43,014	#	NUP 205 ECP	5,901	
NU 319 ECML	75,775		NUP 205 ECP/C3	5,901	
NU 319 ECML/C3	75,775		NUP 206 ECP	5,927	
NU 319 ECP	26,283	#	NUP 206 ECP/C3	5,927	
NU 319 ECP/C3	26,283	#	NUP 207 ECJ	10,502	
NU 320 ECJ	52,847		NUP 207 ECP	7,460	
NU 320 ECJ/C3	52,847		NUP 207 ECP/C3	7,460	
NU 320 ECM	48,912		NUP 208 ECJ	11,108	
NU 320 ECM/C3	48,912		NUP 208 ECP	7,757	
NU 320 ECML	89,235		NUP 208 ECP/C3	7,757	
NU 320 ECML/C3	89,235		NUP 209 ECP	8,253	
NU 320 ECP	57,008		NUP 209 ECP/C3	8,253	
NU 320 ECP/C3	57,008		NUP 210 ECJ	14,181	
NU 321 ECJ	69,478		NUP 210 ECP	9,584	
NU 321 ECJ/C3	69,478		NUP 210 ECP/C3	9,584	
NU 321 ECP	57,197		NUP 211 ECP	12,928	
NU 321 ECP/C3	57,197		NUP 212 ECJ	20,332	
NU 321 EM	***	#	NUP 212 ECP	13,741	
NU 321 EM/C3	***	#	NUP 212 ECP/C3	13,741	
NU 322 ECJ	82,084		NUP 213 ECP	16,968	
NU 322 ECJ/C3	82,084		NUP 213 ECP/C3	16,968	
NU 322 ECM	***	#	NUP 214 ECP	18,653	
NU 322 ECM/C3	***	#	NUP 215 ECP	20,354	
NU 322 ECML	89,763		NUP 216 ECP	24,892	
NU 322 ECML/C3	89,763		NUP 216 ECP/C3	24,892	
NU 322 ECP	59,634	#	NUP 217 ECP	27,983	

Note : \*\*\* Price on request - subject to availability.

**SKF India (Industrial) Limited**

Recommended Selling Price list for SKF Industrial Products

(Not to be photocopied and/or given to others without permission of the issuing authority)

• Approved by: CS • Issued by: GH

• RSP 2025 Edition No 1, Effective from 4th December 2025

Product Designation	RSP (INR)	Product Designation	RSP (INR)
NUP 218 ECP	30,303	NUP 307 ECP	9,033
NUP 219 ECP	40,795	NUP 307 ECP/C3	9,033
NUP 220 ECP	40,795	NUP 308 ECP	10,910
NUP 2203 ECP	6,111	NUP 309 ECJ	14,188
NUP 2205 ECP	6,135	NUP 309 ECJ/C3	14,188
NUP 2206 ECP	7,690	NUP 309 ECP	12,081
NUP 2206 ECP/C3	7,690	NUP 310 ECJ	16,543
NUP 2207 ECP	8,822	NUP 310 ECJ/C3	16,543
NUP 2208 ECP	10,814	NUP 310 ECP	15,502
NUP 2208 ECP/C3	10,814	NUP 310 ECP/C3	15,502
NUP 2209 ECP	11,844	NUP 311 ECJ	29,403
NUP 2210 ECJ	14,405	NUP 311 ECP	16,488
NUP 2210 ECP	12,606	NUP 312 ECJ	33,280
NUP 2210 ECP/C3	12,606	NUP 312 ECP	21,858
NUP 2211 ECP	14,768	NUP 312 ECP/C3	21,858
NUP 2211 ECP/C3	14,768	NUP 313 ECJ	34,508
NUP 2212 ECP	17,164	NUP 313 ECP	24,990
NUP 2212 ECP/C3	17,164	NUP 314 ECP	30,860
NUP 2213 ECP	18,831	NUP 315 ECJ	64,118
NUP 2214 ECP	21,662	NUP 315 ECP	40,413
NUP 2215 ECP	24,298	NUP 316 ECP	43,010
NUP 2216 ECP	28,365	NUP 317 ECJ	78,606
NUP 2217 ECP	40,979	NUP 317 ECP	47,161
NUP 2217 ECP/C3	40,979	NUP 318 ECJ	103,883
NUP 2218 ECP	43,544	NUP 320 ECJ	113,221
NUP 2218 ECP/C3	43,544	RBC4-0095 A	***
NUP 222 ECP	52,360	RBC4-0096 A	***
NUP 2220 ECP	66,146	RBC4-8150 B	***
NUP 2222 ECP	69,132	RNU 203 ECP	3,853
NUP 224 ECJ	79,254	RNU 204 ECP	3,872
NUP 224 ECJ/C3	79,254	RNU 305	7,073
NUP 226 ECJ	127,452	RNU 306	7,417
NUP 228 ECJ	129,401	RNU 307 ECP	6,589
NUP 230 ECJ	158,603		
NUP 2304 ECP	10,817	DGBB-Deep Groove Ball Bearings	
NUP 2305 ECP	11,713	16002	841
NUP 2306 ECP	12,699	16002/C3	841
NUP 2307 ECP	12,518	16002-2Z	1,011
NUP 2308 ECP	15,224	16004	857
NUP 2309 ECP	17,609	16004/C3	857
NUP 2310 ECP	21,450	16005	1,115
NUP 2311 ECP	31,261	16005/C3	1,115
NUP 2312 ECP	32,226	16006	1,391
NUP 2312 ECP/C3	32,226	16006/C3	1,391
NUP 2313 ECP	45,776	16008	595
NUP 2314 ECP	47,663	16008/C3	607
NUP 304 ECP	6,245	16009	2,384
NUP 305 ECP	6,508	16009/C3	2,384
NUP 306 ECP	7,798	16010	2,745
NUP 307 ECJ	13,161		

Note : \*\*\* Price on request - subject to availability.

**SKF India (Industrial) Limited**

Recommended Selling Price list for SKF Industrial Products

(Not to be photocopied and/or given to others without permission of the issuing authority)

• Approved by: CS • Issued by: GH

• RSP 2025 Edition No 1, Effective from 4th December 2025

Product Designation	RSP (INR)		Product Designation	RSP (INR)	
16010/C3	2,745		4206 ATN9	4,957	
16011	4,288		4207 ATN9	5,344	
16011/C3	4,288		4208 ATN9	6,109	
16012	4,592		4209 ATN9	7,659	
16012/C3	4,592		4210 ATN9	7,795	
16013	5,046		4211 ATN9	13,098	
16013/C3	5,046		4212 ATN9	14,945	
16014	6,056		4213 ATN9	21,450	
16014/C3	6,056		4214 ATN9	22,056	
16015	8,060		4215 ATN9	25,638	
16015/C3	8,060		4301 ATN9	4,412	
16016	8,328		4302 ATN9	4,797	
16016/C3	8,328		4303 ATN9	4,799	
16017	9,094		4304 ATN9	5,145	
16017/C3	9,094		4305 ATN9	6,116	
16018	10,074		4305 ATN9/C3	6,116	
16018/C3	10,074		4306 ATN9	7,198	
16019	11,280		4307 ATN9	8,304	
16019/C3	11,280		4308 ATN9	9,245	
16020	12,895		4309 ATN9	20,160	
16020/C3	12,895		4310 ATN9	22,087	
16021	18,206		4311 ATN9	26,220	
16021/C3	18,206		4312 ATN9	32,941	
16022	18,333		6000	196	^
16022/C3	18,333		6000/C3	196	^
16024	18,753		6000-2RS1	273	^
16024/C3	18,753		6000-2RS1/C3	273	^
16032	46,099		6000-2RSH/C3	346	
16100	1,309		6000-2RSH/C3GJN	599	
16100-2Z	1,484		6000-2Z	212	^
1838001/C3	411	^	6000-2Z/C3	212	^
1838001/C4	405	^	6000-RSH	249	
207-2Z	6,756		6000-Z	214	^
211-2Z	10,898		6000-Z/C3	214	^
212-Z	12,283		6001	199	^
307	6,579		6001/C3	199	^
308	6,763		6001-2RS1	277	^
308 TN9/C3	7,308		6001-2RS1/C3	277	^
313 NR	18,715		6001-2RSH	295	^
361202 R	1,627		6001-2RSH/C3	301	
361204 R	2,000		6001-2Z	228	^
361205 R	2,781		6001-RSH	251	
361206 R	7,668		6001-Z	216	^
361207 R	7,847		6001-Z/C3	216	^
4200 ATN9	2,805		6002	212	^
4201 ATN9	2,809		6002/C3	212	^
4202 ATN9	2,912		6002-2RS1	297	^
4203 ATN9	3,079		6002-2RSH	507	
4204 ATN9	3,210		6002-2RSH/C3	507	
4205 ATN9	3,411		6002-2Z	266	^

Note : \*\*\* Price on request - subject to availability.

**SKF India (Industrial) Limited**

Recommended Selling Price list for SKF Industrial Products

(Not to be photocopied and/or given to others without permission of the issuing authority)

• Approved by: CS • Issued by: GH

• RSP 2025 Edition No 1, Effective from 4th December 2025

Product Designation	RSP (INR)		Product Designation	RSP (INR)	
6002-2Z/C3	266	^	6006-2RS1/C3	489	^
6002-2Z/C3LHT23	516		6006-2Z	484	^
6002-RS1	277	^	6006-2Z/C3	484	^
6002-RSH	454		6006-2Z/C3GJN	1,015	
6002-Z	238	^	6006-2Z/VA208	12,178	
6002-Z/C3	238	^	6006-RS1	470	
6003	258	^	6006-Z	447	^
6003/C3	258	^	6006-Z/C3	473	
6003-2RS1	352	^	6007	433	^
6003-2RSH	645		6007 NR/C3	2,102	
6003-2RSH/C3	645		6007/C3	433	^
6003-2Z	298	^	6007-2RS1	563	^
6003-2Z/C3	298	^	6007-2RS1/C3	563	^
6003-RSH	513		6007-2RS1/C4	1,662	
6003-RSH/C3	513		6007-2Z	565	^
6003-Z	280	^	6007-2Z/C3GJN	1,493	
6004	280	^	6007-2Z/C3WT	1,581	
6004 TN9/C3	858		6007-RS1	492	^
6004/C3	280	^	6007-Z	946	
6004-2RS1	357	^	6007-Z/C3	946	
6004-2RS1/C3	357	^	6008	1,171	
6004-2RSH	654		6008 NR	2,251	
6004-2RSH/C3	654		6008/C3	1,171	
6004-2RZ/LHT23	482		6008-2RS1	1,092	
6004-2Z	336	^	6008-2RS1/C3	1,092	
6004-2Z/C3	336	^	6008-2RS1NR/C3	2,184	
6004-2Z/C3LHT23	688		6008-2Z	1,431	
6004-2Z/VA208	10,482		6008-2Z/C3	1,431	
6004-RSH	514		6008-2Z/VA208	17,931	
6004-Z	307	^	6008-RS1	1,527	
6004-Z/C3	307	^	6008-RS1/C3	1,527	
6005	315	^	6008-Z	1,386	
6005 TN9/C3	958		6008-Z/C3	1,386	
6005/C3	315	^	6009	972	
6005-2RS1	401	^	6009 NR	2,810	
6005-2RS1/C3	401	^	6009/C2	2,093	
6005-2RSH	654		6009/C3	1,612	
6005-2RSH/C3	654		6009-2RS1	1,099	
6005-2RSLTN9/C3VT162	869		6009-2RS1/C3	1,099	
6005-2Z	373	^	6009-2Z	1,842	
6005-2Z/C3	373	^	6009-2Z/C3	1,842	
6005-2Z/C3WT	798		6009-2Z/C3GJN	2,570	
6005-2Z/VA201	6,416		6009-RS1	1,999	
6005-RSH	538		6009-RS1/C3	1,999	
6005-RSH/C3	538		6009-Z	1,840	
6005-Z	347	^	6009-Z/C3	1,840	
6005-Z/C3	347	^	6010	953	^
6006	405	^	6010 NR	2,998	
6006/C3	405	^	6010/C3	953	^
6006-2RS1	489	^	6010-2RS1	1,096	^

Note : \*\*\* Price on request - subject to availability.

**SKF India (Industrial) Limited**

Recommended Selling Price list for SKF Industrial Products

(Not to be photocopied and/or given to others without permission of the issuing authority)

• Approved by: CS • Issued by: GH

• RSP 2025 Edition No 1, Effective from 4th December 2025

Product Designation	RSP (INR)	Product Designation	RSP (INR)
6010-2RS1/C3	1,118	6015-2Z/C3	5,373
6010-2RS1/C3GJN	3,440	6015-Z	5,212
6010-2Z	1,079	6015-Z/C3	5,212
6010-2Z/C3	1,101	6016	5,227
6010-RS1	2,064	6016/C3	5,227
6010-RS1/C3	2,064	6016-2RS1	7,955
6010-Z	1,902	6016-2RS1/C3	7,955
6010-Z/C3	1,902	6016-2Z	6,354
6011	2,308	6016-2Z/C3	6,354
6011/C3	2,308	6016-Z	5,876
6011-2RS1	3,352	6017	5,731
6011-2RS1/C3	3,352	6017/C3	6,261
6011-2RS1/C3GJN	4,128	6017-2RS1	8,915
6011-2Z	2,730	6017-2RS1/C3	9,930
6011-2Z/C3	2,730	6017-2Z	7,398
6011-Z	2,723	6017-2Z/C3	7,398
6011-Z/C3	2,723	6017-Z	6,512
6012	2,534	6018	6,136
6012/C3	2,534	6018/C3	6,136
6012-2RS1	3,731	6018/C4	7,986
6012-2RS1/C3	3,731	6018-2RS1	9,766
6012-2Z	3,127	6018-2RS1/C3	9,766
6012-2Z/C3	3,127	6018-2Z	7,729
6012-RS1	2,974	6018-2Z/C3	7,729
6012-Z	2,829	6018-Z	7,031
6013	3,110	6019	7,381
6013 NR	5,459	6019/C3	8,120
6013/C3	3,110	6019/C4	10,686
6013-2RS1	4,768	6019-2RS1	12,286
6013-2RS1/C3	4,768	6019-2RS1/C3	12,286
6013-2Z	3,920	6019-2Z	8,304
6013-2Z/C3	3,920	6019-2Z/C3	8,304
6013-Z	3,342	6019-Z	7,762
6013-Z/C3	3,342	6020	8,085
6014	3,629	6020 M/C4	23,485
6014 M	18,538	6020/C3	8,085
6014 M/C3S0	28,488	6020/C4	10,915
6014/C3	3,872	6020-2RS1	13,337
6014-2RS1	5,251	6020-2RS1/C3	13,337
6014-2RS1/C3	5,251	6020-2Z	9,863
6014-2Z	4,591	6020-2Z/C3	9,863
6014-2Z/C3	4,591	6020-2Z/C4S1GJN	17,336
6014-Z	4,364	6020-Z	8,352
6015	4,434	6021/C4	17,633
6015 M/C3	21,552	6022 M/C4	28,260
6015 NR	7,984	6024	18,663
6015/C3	4,434	6024-2RS1	23,794
6015-2RS1	6,534	6024-2Z	24,484
6015-2RS1/C3	6,534	6024-Z	19,080
6015-2Z	5,373	6026/C4	26,968

Note : \*\*\* Price on request - subject to availability.

**SKF India (Industrial) Limited**

Recommended Selling Price list for SKF Industrial Products

(Not to be photocopied and/or given to others without permission of the issuing authority)

• Approved by: CS • Issued by: GH

• RSP 2025 Edition No 1, Effective from 4th December 2025

Product Designation	RSP (INR)	Product Designation	RSP (INR)
6026-2Z/C3	30,652	61802-2RS1	1,469
6030 M/C3	62,481	61802-2Z	1,299
6030-2Z/C3	45,735	61803	571
6032	48,009	61803-2RS1	1,588
6032 M/C3	78,184	61803-2Z	1,049
6032/C3	48,009	61804-2RS1	1,734
6032-2Z	57,716	61804-2RZ	1,821
6034 M/C3	98,159	61805	352
6040 M/C3	148,095	61805/C3	571
604-2Z	688	61805-2RS1	2,071
6048 MA/C3	303,886	61805-2RZ	2,539
607	275	61806	2,105
607-2RSH	399	61806/C3	2,105
607-2RSH/C3	399	61806-2RS1	2,544
607-2Z	320	61806-2RZ	3,228
607-2Z/C3	320	61807	2,374
607-Z	294	61807/C3	2,374
608	301	61807-2RS1	2,943
608/C3	301	61807-2RZ	4,073
608-2RSH	420	61808	2,792
608-2RSH/C3	420	61808/C3	2,792
608-2RSL/C3	408	61808-2RS1	4,369
608-2Z	232	61808-2RZ	4,960
608-2Z/C3	232	61809	3,670
608-2Z/C3GJN	449	61809-2RS1	4,983
608-2Z/C3WT	389	61809-2RZ	6,207
608-RSH	361	61810	4,305
608-Z	330	61810-2RS1	5,851
608-Z/C3	330	61810-2RZ	7,272
609	342	61811	4,917
609-2RSH	480	61811-2RS1	7,716
609-2RSH/C3	480	61811-2RZ	8,585
609-2Z	358	61812	5,764
609-2Z/C3	358	61812-2RS1	7,826
609-RSH	433	61812-2RZ	10,377
609-Z	342	61813	7,620
618/4	1,328	61813/C3	7,620
618/5	1,443	61813-2RS1	9,070
618/6	1,135	61814	9,092
618/7	1,404	61814-2RS1	9,092
618/8	1,180	61814-2RZ	12,881
618/9	1,491	61815	8,392
61800	994	61815/C3	8,392
61800-2RS1	1,352	61815-2RS1	12,444
61800-2Z	1,254	61815-2RZ	7,413
61801	1,017	61816	8,954
61801-2RS1	1,405	61816-2RS1	14,114
61801-2Z	1,261	61816-2RZ	14,326
61802	1,078	61817	11,235
61802/C3	1,078	61817-2RS1	17,578

Note : \*\*\* Price on request - subject to availability.

**SKF India (Industrial) Limited**

Recommended Selling Price list for SKF Industrial Products

(Not to be photocopied and/or given to others without permission of the issuing authority)

• Approved by: CS • Issued by: GH

• RSP 2025 Edition No 1, Effective from 4th December 2025

Product Designation	RSP (INR)	Product Designation	RSP (INR)
61817-2RZ	17,842	619/9-2Z	593
61818	12,424	61900	986
61818/C3	12,424	61900-2RS1	1,261
61818-2RS1	19,439	61900-2Z	1,213
61819-2RS1/C3	16,882	61901	1,011
61820	18,535	61901-2RS1	1,211
61820/C3	18,535	61901-2RZ	865
61820-2RS1	25,951	61901-2Z	1,213
61820-2RZ	17,513	61902	344
61821	20,690	61902-2RS1	1,361
61822	23,229	61902-2RZ	1,137
61822/C3	23,229	61902-2Z	341
61822-2RZ	30,711	61902-2Z/C3	347
61824	27,231	61903	1,090
61824-2RZ	37,161	61903/C3	1,090
61826	29,400	61903-2RS1	1,477
61826-2RZ	45,236	61903-2RZ	1,300
61828	34,806	61903-2Z	1,481
61830	47,947	61904	1,168
61830 MA	66,248	61904/C3	1,168
61830 MA/C3	66,248	61904-2RS1	1,531
61832	50,270	61904-2RZ	1,376
61832 MA	73,570	61905	372
61832 MA/C3	73,570	61905/C3	364
61834/C3	53,563	61905-2RS1	1,778
61836 MA	92,199	61905-2RS1/C3	1,778
61836 MA/C3	94,992	61905-2RZ	1,840
61838 MA	92,290	61906	1,644
61838 MA/C3	92,290	61906/C3	1,644
61840 MA	108,580	61906-2RS1	2,160
61840 MA/C3	108,580	61906-2RZ	1,878
61844 MA	128,491	61907	3,199
61844 MA/C3	128,491	61907/C3	3,199
61848 MA	155,034	61907-2RS1	4,032
61848 MA/C3	155,034	61907-2RZ	4,021
61852 MA	172,423	61908	5,064
61852 MA/C3	172,423	61908/C3	5,064
61856 MA	195,017	61908-2RS1	6,877
61856 MA/C3	195,017	61908-2RZ	7,343
619/4	416	61909	5,889
619/4-2Z	456	61909/C3	5,889
619/5	445	61909-2RS1	7,993
619/5-2Z	458	61909-2RZ	7,762
619/6	456	61910	6,207
619/6-2Z	459	61910/C3	6,207
619/7	480	61910-2RS1	8,428
619/7-2Z	531	61910-2RZ	11,739
619/8-2RS1	516	61911	6,964
619/8-2Z	537	61911-2RS1	10,339
619/9	494	61912	7,902

Note : \*\*\* Price on request - subject to availability.

**SKF India (Industrial) Limited**

Recommended Selling Price list for SKF Industrial Products

(Not to be photocopied and/or given to others without permission of the issuing authority)

• Approved by: CS • Issued by: GH

• RSP 2025 Edition No 1, Effective from 4th December 2025

Product Designation	RSP (INR)		Product Designation	RSP (INR)	
61912/C3	7,902		6201-RSH	356	
61912-2RS1	10,721		6201-Z	174	^
61913	8,784		6201-Z/C3	174	^
61913/C3	8,784		6202	165	^
61914	10,255		6202/C3	165	^
61914/C3	10,255		6202/VA201	2,707	
61915	11,908		6202-2RS1	238	^
61916-2RS1	16,672		6202-2RS1/C2LHT23	238	^
61917	17,188		6202-2RS1/C3	238	^
61918	20,231		6202-2RSH/C3	244	^
61922 MA	64,717		6202-2RSH/C3WT	628	
61922 MA/C3	64,717		6202-2RSLTN9/C3VT162	743	
61924 MA/C3	80,921		6202-2Z	217	^
61928 MA	107,330		6202-2Z/C3	217	^
61928 MA/C3	107,330		6202-2Z/C3GJN	468	
61932 MA	126,384		6202-2Z/VA201	4,257	
61932 MA/C3	126,539		6202-2Z/VA228	7,855	
61936 MA	130,275		6202-RS1	206	^
61936 MA/C3	129,994		6202-RSH	394	
61938 MA	132,149		6202-RSH/C3	394	
61938 MA/C3	132,149		6202-Z	191	^
61940 MA	148,157		6202-Z/C3	191	^
61940 MA/C3	148,157		6203	217	^
61944 MA	168,634		6203 Tn9	249	
61944 MA/C3	168,634		6203/C3	217	^
6200	180	^	6203-2RS1	288	^
6200/C3	180	^	6203-2RS1/C3	288	^
6200-2RS1	266	^	6203-2RSH	475	
6200-2RS1/C3	266	^	6203-2RSH/C3	535	
6200-2RSH	449		6203-2RSH/C3WT	640	
6200-2RSH/C3	449		6203-2RSLTN9/C3VT162	621	
6200-2Z	229	^	6203-2Z	271	^
6200-2Z/C3	229	^	6203-2Z/C3	271	^
6200-2Z/C3LHT23	411		6203-2Z/VA228	8,289	
6200-RS1	219	^	6203-RS1	224	^
6200-RSH	349		6203-RSH	437	
6200-Z	170	^	6203-RSH/C3	437	
6200-Z/C3	170	^	6203-Z	236	^
6201	140	^	6203-Z/C3	236	^
6201/C3	140	^	6204	314	^
6201-2RS1	223	^	6204 N	314	^
6201-2RS1/C3	223	^	6204 TN9/C4	960	
6201-2RSH/C3	473		6204/C3	314	^
6201-2RSH/C3GJN	487		6204/VA201	3,086	
6201-2RSL/C3GJN	449		6204-2RS1	416	^
6201-2Z	199	^	6204-2RS1/C3	416	^
6201-2Z/C3	199	^	6204-2RS1N	398	^
6201-2Z/VA201	3,865		6204-2RSH/C3	736	
6201-2Z/VA228	7,694		6204-2RSH/C3GJN	483	
6201-RS1	170	^	6204-2RSH/C3WT	655	

Note : \*\*\* Price on request - subject to availability.

**SKF India (Industrial) Limited**

Recommended Selling Price list for SKF Industrial Products

(Not to be photocopied and/or given to others without permission of the issuing authority)

• Approved by: CS • Issued by: GH

• RSP 2025 Edition No 1, Effective from 4th December 2025

Product Designation	RSP (INR)		Product Designation	RSP (INR)	
6204-2RSLTN9/C3VT162	893		6206-Z	678	^
6204-2Z	383	^	6206-Z/C3	678	^
6204-2Z/C3	383	^	6207	634	^
6204-2Z/VA201	5,274		6207 N	619	^
6204-2Z/VA228	8,535		6207 NR	604	^
6204-RS1	349	^	6207/C3	634	^
6204-RSH	538		6207/VA201	4,389	
6204-RSH/C3	538		6207-2RS1	755	^
6204-Z	347	^	6207-2RS1/C3	755	^
6204-Z/C3	347	^	6207-2RS1/C3GJN	1,364	^
6205	416	^	6207-2RS1/C3WT	***	
6205 TN9/C3	1,176		6207-2RS1/C4	***	
6205/C3	416	^	6207-2RS1/GFJ	***	
6205/VA201	3,101		6207-2RS1K	4,680	
6205-2RS1	540	^	6207-2RS1NR	***	
6205-2RS1/C3	540	^	6207-2RZ/C3VT350	***	
6205-2RSH/C3WT	1,068		6207-2Z	713	^
6205-2RSHK	1,933		6207-2Z/C3	713	^
6205-2Z	506	^	6207-2Z/C3GJN	1,314	
6205-2Z/C3	506	^	6207-2Z/GJN	***	
6205-2Z/VA201	5,772		6207-2Z/VA208	13,093	
6205-2Z/VA228	9,608		6207-2Z/VA228	15,666	
6205-RS1	460	^	6207-2ZNR	***	
6205-RS1/C3	460	^	6207-RS1	654	^
6205-RSH/C3	628		6207-RS1/C3	667	
6205-Z	459	^	6207-Z	681	^
6205-Z/C3	459	^	6207-Z/C3	681	^
6206	626	^	6208	750	^
6206 ETN9/C3	4,969		6208 M/C3S0VQ335	***	
6206 N	610	^	6208 N	742	^
6206 NR	664		6208 NR	767	^
6206 TN9/C3	1,582		6208/C3	750	^
6206/C3	632	^	6208/C4	1,698	
6206/C4	1,111		6208/VA201	5,146	
6206/VA201	3,954		6208-2RS1	899	^
6206-2RS1	725	^	6208-2RS1/C3	899	^
6206-2RS1/C3	725	^	6208-2RS1/C3GJN	2,098	
6206-2RS1/C3GJN	1,359		6208-2RS1/C3WT	2,776	
6206-2RS1/C3WT	1,625		6208-2RS1/C4	2,675	
6206-2RZTN9/C3VT162	2,800		6208-2RS1K	4,727	
6206-2Z	708	^	6208-2Z	855	^
6206-2Z/C3	708	^	6208-2Z/C3	855	^
6206-2Z/C3GJN	1,109		6208-2Z/C3HTVT530	811	^
6206-2Z/C3HT	1,545		6208-2Z/VA201	10,636	
6206-2Z/C4	***		6208-2Z/VA208	13,724	
6206-2Z/VA201	6,350		6208-2Z/VA228	17,401	
6206-2Z/VA208	12,293		6208-2ZNR	2,387	
6206-2Z/VA228	11,784		6208-RS1/C3	848	
6206-2ZNR	1,140		6208-Z	791	^
6206-RS1	664	^	6208-Z/C3	791	^

Note : \*\*\* Price on request - subject to availability.

**SKF India (Industrial) Limited**

Recommended Selling Price list for SKF Industrial Products

(Not to be photocopied and/or given to others without permission of the issuing authority)

• Approved by: CS • Issued by: GH

• RSP 2025 Edition No 1, Effective from 4th December 2025

Product Designation	RSP (INR)		Product Designation	RSP (INR)	
6208-ZNR	***		6211/C4	2,723	
6209	904	^	6211-2RS1	1,356	^
6209 TN9W/C4H	***		6211-2RS1/HTF7	1,356	^
6209/C3	904	^	6211-2Z	1,379	^
6209/C4	1,770		6211-2Z/C3	1,379	^
6209/C5	***		6211-2Z/C3GJN	3,347	
6209-2RS1	1,027	^	6211-2Z/VA208	19,381	
6209-2RS1/C3	1,027	^	6211-RS1	1,325	^
6209-2RS1/C3GJN	2,246		6211-Z	1,305	^
6209-2RS1/C3WT	***		6211-Z/C3	1,331	
6209-2RS1/C4	3,734		6212	1,418	^
6209-2RS1/WT	***		6212 M/C3	17,570	
6209-2RS1K	5,170		6212/C3	1,418	^
6209-2Z	1,025	^	6212/C4	3,710	
6209-2Z/C3	1,025	^	6212-2RS1	1,635	^
6209-2Z/C3HT	1,046		6212-2RS1/C3	1,635	^
6209-2Z/C3HTVT530	971	^	6212-2Z	1,561	^
6209-2Z/C3WT	2,724		6212-2Z/C3	1,561	^
6209-2Z/C4	***		6212-2Z/C3GJN	3,978	
6209-2Z/C4HT	2,523		6212-2Z/C3HTVT530	1,546	^
6209-2Z/C5	***		6212-2Z/C3WT	3,296	
6209-RS1	1,871		6212-RS1	3,459	
6209-RS1/C3	1,871		6212-Z	1,658	
6209-Z	941	^	6212-Z/C3	1,625	^
6209-Z/C3	941	^	6212-Z/C4	5,590	
6210	951	^	6212-ZNR	6,137	
6210 MA/C3	41,779		6213	1,509	^
6210 N	929	^	6213 M/C3	18,444	
6210 NR	980	^	6213/C3	1,509	^
6210/C3	951	^	6213-2RS1	1,698	
6210/C4	2,418		6213-2RS1/C3	1,664	^
6210/VA201	6,247		6213-2Z	1,661	^
6210-2RS1	1,254	^	6213-2Z/C3	1,661	^
6210-2RS1/C3	1,254	^	6213-2Z/C3GJN	6,749	
6210-2RS1/C3GJN	1,243	^	6213-2Z/C3HTVT530	1,575	^
6210-2Z	1,074	^	6213-RS1	5,922	
6210-2Z/C3	1,074	^	6213-Z	5,681	
6210-2Z/C3GJN	2,611		6213-Z/C3	5,681	
6210-2Z/C3HTVT530	1,027	^	6213-ZNR	9,004	
6210-2Z/C3WT	2,922		6214	4,912	
6210-2Z/C4	3,046		6214 M/C3	18,951	
6210-2Z/VA208	14,976		6214/C3	4,912	
6210-2Z/VA228	20,984		6214/C4	5,556	
6210-RS1	2,059		6214-2RS1	7,097	
6210-RS1/C3	2,059		6214-2Z	6,171	
6210-Z	1,000	^	6214-2Z/C3	6,171	
6210-Z/C3	1,000	^	6214-RS1	6,175	
6211	1,212	^	6214-Z	5,858	
6211 N	3,519		6214-Z/C3	5,858	
6211/C3	1,212	^	6215	5,815	

Note : \*\*\* Price on request - subject to availability.

**SKF India (Industrial) Limited**

Recommended Selling Price list for SKF Industrial Products

(Not to be photocopied and/or given to others without permission of the issuing authority)

• Approved by: CS • Issued by: GH

• RSP 2025 Edition No 1, Effective from 4th December 2025

Product Designation	RSP (INR)		Product Designation	RSP (INR)	
6215 M/C3	21,970		6219-2Z	15,201	
6215/C3	5,815		6219-2Z/C3	15,201	
6215/C4	6,202		6219-Z	14,269	
6215/VA201	18,450		6219-Z/C3	14,269	
6215-2RS1	9,592		6220	13,722	#
6215-2RS1/C3	9,592		6220 M/C3	33,783	
6215-2Z	7,415		6220/C3	13,722	#
6215-2Z/C3	7,415		62200-2RS1	1,543	
6215-2Z/C3GJN	8,050		62200-2RS1/C3	1,383	
6215-2Z/C3WT	4,809		62201-2RS1	1,773	
6215-RS1	7,425		62201-2RS1/C3	1,773	
6215-Z	7,133		62202-2RS1	1,778	
6215-Z/C3	7,133		62202-2RS1/C3	1,778	
6216	6,113	#	6220-2RS1	20,367	#
6216 M/C4	32,609		6220-2RS1/C3	20,367	#
6216/C3	6,113	#	6220-2Z	17,279	#
6216/C4	6,492	#	6220-2Z/C3	17,279	#
6216-2RS1	10,083	#	62203-2RS1	1,856	
6216-2RS1/C3	10,083	#	62203-2RS1/C3	1,856	
6216-2Z	7,794	#	62204-2RS1	2,138	
6216-2Z/C3	7,794	#	62204-2RS1/C3	2,138	
6216-RS1	7,499		62205-2RS1	2,150	
6216-Z	6,914		62205-2RS1/C3	2,150	
6216-Z/C3	7,196	#	62206-2RS1	2,800	
6217	7,448	#	62206-2RS1/C3	2,800	
6217 M/C3	24,938		62207-2RS1	3,939	
6217/C3	7,448	#	62207-2RS1/C3	3,939	
6217/C4	8,193	#	62208-2RS1	4,436	
6217-2RS1	11,111	#	62208-2RS1/C3	4,436	
6217-2RS1/C3	11,111	#	62209-2RS1	5,611	
6217-2Z	8,248	#	6220-Z	14,560	
6217-2Z/C3	8,248	#	6220-Z/C3	14,560	
6217-Z	8,340		62210-2RS1	6,997	
6217-Z/C3	8,340		62210-2RS1/C3	6,997	
6218	9,480	#	62211-2RS1	10,072	
6218 M/C3	26,847		62212-2RS1	11,008	
6218 M/C4	40,165		62213-2RS1	16,161	
6218 NR	16,813		62214-2RS1	18,810	
6218/C3	9,480	#	6222-2Z/C3	33,088	
6218-2RS1	15,068	#	6224/C4	39,159	
6218-2RS1/C3	15,068	#	6224-2RS1/C3	30,459	
6218-2Z	11,153	#	6226 M/C3	85,073	
6218-2Z/C3	11,153	#	6226-2Z/C3	21,359	
6218-Z	10,348		6228 MA/C3	106,205	
6218-Z/C3	10,348		623	408	
6219	13,055		62300-2RS1	2,133	
6219/C3	13,055		62301-2RS1	2,176	
6219/C4	14,324		62302-2RS1	2,286	
6219-2RS1	19,034		62302-2RS1/C3	2,286	
6219-2RS1/C3	19,034		62303-2RS1	2,549	

Note : \*\*\* Price on request - subject to availability.

**SKF India (Industrial) Limited**

Recommended Selling Price list for SKF Industrial Products

(Not to be photocopied and/or given to others without permission of the issuing authority)

• Approved by: CS • Issued by: GH

• RSP 2025 Edition No 1, Effective from 4th December 2025

Product Designation	RSP (INR)		Product Designation	RSP (INR)	
62303-2RS1/C3	2,549		629-2RSH/C3	671	
62304-2RS1	3,029		629-2Z	172	^
62305-2RS1	3,739		629-2Z/C3	172	^
62306-2RS1	5,298		63/28/C3HN3	843	^
62306-2RS1/C3	5,298		630/8-2RS1	2,532	
62307-2RS1	7,370		63000-2RS1	1,744	
62308-2RS1	8,206		63001-2RS1	1,830	
62309-2RS1	11,627		63002-2RS1	1,928	
62310-2RS1	13,517		6300-2RSH	561	
62311-2RS1	28,850		6300-2RSH/C3	561	
62312-2RS1	29,744		63003-2RS1	2,004	
623-2RS1	628		63004-2RS1	2,319	
623-2Z	306		63004-2RS1/C3	2,319	
623-2Z/C3	488		63005-2RS1	2,544	
6234/C3	178,335		63006-2RS1	2,955	
624	411		63007-2RS1	3,129	
624-2RS1	533		63008-2RS1	4,025	
624-2Z	306		6301	153	^
624-2Z/C3	526		6301/C3	153	^
625	416		6301-2RS1	204	^
625-2RS1	547		6301-2RS1/C3	204	^
625-2Z	322		6301-2RSH	609	
625-2Z/C3	531		6301-2RSH/C3	609	
625-Z	322		6301-2Z	201	^
626	420		6301-2Z/C3	201	^
626/C3	420		6301-Z	179	^
626-2RSH	595		6301-Z/C3	179	^
626-2RSH/C3	595		6302	278	^
626-2Z	323		6302/C3	278	^
626-2Z/C3	323		6302-2RS1	398	^
626-2Z/C3GJN	315		6302-2RS1/C3	398	^
626-2Z/LHT23	445		6302-2RSH	648	
626-Z	335		6302-2RSH/C3	648	
627	433		6302-2Z	356	^
627-2RSH	660		6302-2Z/C3	356	^
627-2RSH/C3	660		6302-2Z/C3GJN	607	
627-2Z	325		6302-RS1	347	^
627-2Z/C3	325		6302-Z	336	^
627-Z	342		6302-Z/C3	336	^
628/4-2Z	1,230		6303	357	^
628/5-2Z	1,240		6303/C3	357	^
628/6-2RS1	1,412		6303-2RS1	435	^
628/6-2Z	1,245		6303-2RS1/C3	435	^
628/7-2Z	1,345		6303-2RSH/C3	750	
628/8-2RS1	1,648		6303-2Z	423	^
628/8-2Z	1,531		6303-2Z/C3	423	^
628/9-2Z	1,708		6303-2Z/C3GJN	793	
628/D8	199	^	6303-RSH	542	
629-2RS1	196	^	6303-Z	391	^
629-2RSH	671		6303-Z/C3	391	^

Note : \*\*\* Price on request - subject to availability.

**SKF India (Industrial) Limited**

Recommended Selling Price list for SKF Industrial Products

(Not to be photocopied and/or given to others without permission of the issuing authority)

• Approved by: CS • Issued by: GH

• RSP 2025 Edition No 1, Effective from 4th December 2025

Product Designation	RSP (INR)		Product Designation	RSP (INR)	
6304	307	^	6306-2Z/C3GJN	1,421	
6304 N	325	^	6306-2Z/C4	715	^
6304/C3	307	^	6306-2Z/C4GJN	***	
6304/VA201	4,900		6306-2Z/C4WT	***	
6304-2RS1	423	^	6306-2Z/GJN	***	
6304-2RS1/C3	423	^	6306-2Z/VA208	10,040	
6304-2RSH/C3	857		6306-RS1	1,082	
6304-2Z	383	^	6306-RS1/C3	1,168	
6304-2Z/C3	383	^	6306-Z	700	^
6304-2Z/C3WT	1,006		6306-Z/C3	700	^
6304-Z	344	^	6307	767	^
6304-Z/C3	344	^	6307 M/C3	9,682	
6305	472	^	6307 N	749	^
6305 ETN9/C3	3,039		6307 NR	776	^
6305 N	462	^	6307/C3	767	^
6305 N/C3	462	^	6307/C4	1,902	
6305 NR	614		6307-2RS1	1,067	^
6305 TN9/C3	***		6307-2RS1/C3	1,067	^
6305/C3	472	^	6307-2RS1/C3GJN	2,436	
6305-2RS1	545	^	6307-2RS1NR/C3	1,087	^
6305-2RS1/C3	545	^	6307-2Z	863	^
6305-2RS1/C4	1,362		6307-2Z/C3	863	^
6305-2Z	538	^	6307-2Z/VA208	12,871	
6305-2Z/C3	538	^	6307-RS1	1,677	
6305-2Z/C3GJN	***		6307-RS1/C3	1,677	
6305-2Z/C3WT	***		6307-Z	809	^
6305-2Z/VA228	14,622		6307-Z/C3	809	^
6305-RS1	497	^	6307-ZNR	1,108	
6305-RS1/C3	497	^	6308	1,123	^
6305-Z	507	^	6308 N	1,101	^
6305-Z/C3	507	^	6308 NR	1,135	^
6305-ZNR	1,211		6308/C3	1,123	^
6306	678	^	6308-2RS1	1,575	^
6306 N	644	^	6308-2RS1/C3	1,575	^
6306 N/C3	644	^	6308-2RS1/C3GJN	3,645	
6306 NR	669	^	6308-2RS1/C3WT	3,899	
6306 NR/C3	***		6308-2RS1/C4	***	
6306/C3	678	^	6308-2RZNR/C3	1,280	^
6306/C4	1,101		6308-2Z	1,251	^
6306-2RS1	755	^	6308-2Z/C3	1,251	^
6306-2RS1/C2	797	^	6308-2Z/C3GJN	***	
6306-2RS1/C3	755	^	6308-2Z/C3HTVT530	1,187	^
6306-2RS1/C3GJN	1,708		6308-2Z/C4	2,681	
6306-2RS1/C4	***		6308-2Z/C4WT	***	
6306-2RS1/WT	***		6308-2Z/VA208	18,547	
6306-2RS1NR	***		6308-RS1	1,727	
6306-2RZ	***		6308-RS1/C3	1,727	
6306-2RZ/C3GJN	***		6308-Z	1,195	^
6306-2Z	747	^	6308-Z/C3	1,195	^
6306-2Z/C3	747	^	6308-ZNR	1,143	^

Note : \*\*\* Price on request - subject to availability.

**SKF India (Industrial) Limited**

Recommended Selling Price list for SKF Industrial Products

(Not to be photocopied and/or given to others without permission of the issuing authority)

• Approved by: CS • Issued by: GH

• RSP 2025 Edition No 1, Effective from 4th December 2025

Product Designation	RSP (INR)		Product Designation	RSP (INR)	
6309	1,715	^	6310-Z/C3	1,939	^
6309 2ZJEM	3,605		6310-ZNR	5,618	
6309 M	***		6311	2,720	^
6309 M/C3	***		6311/C3	2,720	^
6309 MA/C3	***		6311/C4	5,762	
6309 N	1,801	^	6311-2RS1	2,770	^
6309 NR	1,856	^	6311-2RS1/C3	2,770	^
6309 NR/C3	1,856	^	6311-2RS1/C3WT	9,529	
6309/C3	1,839	^	6311-2RS1/GJN	6,309	
6309/C5	3,039		6311-2RS1/HTF7	2,851	^
6309-2RS1	2,001	^	6311-2Z	2,934	^
6309-2RS1/C3	2,001	^	6311-2Z/C3	2,934	^
6309-2RS1/C3GJN	4,346		6311-2Z/C3GJN	7,250	
6309-2RS1/C3WT	***		6311-RS1	5,537	
6309-2RS1/C4	***		6311-Z	2,779	^
6309-2RS1NR	***		6311-Z/C3	2,779	^
6309-2Z	1,983	^	6312	3,215	^
6309-2Z/C3	1,983	^	6312 M/C3	21,770	
6309-2Z/C3GJN	3,638		6312/C3	3,215	^
6309-2Z/C3HTVT530	1,898	^	6312/C4	6,846	
6309-2Z/C3WT	4,553		6312-2RS1	3,418	^
6309-2Z/C4	***		6312-2RS1/C3	3,418	^
6309-2Z/C4WT	***		6312-2Z	3,434	^
6309-2Z/C5	3,655		6312-2Z/C3	3,434	^
6309-2Z/GJN	***		6312-2Z/C3GJN	7,778	
6309-2ZNR	***		6312-2Z/C3HTVT530	3,257	^
6309-RS1	1,870	^	6312-RS1	7,112	
6309-Z	1,890	^	6312-RS1/C3	7,112	
6309-Z/C3	1,890	^	6312-Z	3,269	^
6309-Z/C4	***		6312-Z/C3	3,269	^
6309-Z/C5	***		6313	4,022	#
6310	1,804	^	6313 M/C3	23,444	
6310 M/C3	15,865		6313 NR	16,228	
6310 N	1,811	^	6313/C3	4,022	#
6310 N/C3	1,811	^	6313/C4	4,022	#
6310 NR	1,870	^	6313-2RS1	4,246	#
6310 NR/C3	1,870	^	6313-2RS1/C3	4,246	#
6310/C3	1,804	^	6313-2Z	4,275	#
6310-2RS1	2,094	^	6313-2Z/C3	4,275	#
6310-2RS1/C3	2,094	^	6313-2ZNR	3,925	^
6310-2RS1/C3GJN	6,120		6313-RS1	9,154	
6310-2Z	1,984	^	6313-Z	4,070	#
6310-2Z/C3	1,984	^	6313-Z/C3	4,070	#
6310-2Z/C3GJN	4,665		6314	4,396	#
6310-2Z/C3HTVT530	1,920	^	6314 M/C3	24,677	
6310-2Z/C4	5,224		6314 MA/C3	32,797	
6310-2Z/VA208	21,290		6314 NR/C3	15,967	
6310-RS1	4,057		6314/C3	4,326	#
6310-RS1/C3	4,057		6314/C4	4,888	#
6310-Z	1,939	^	6314-2RS1	12,113	#

Note : \*\*\* Price on request - subject to availability.

**SKF India (Industrial) Limited**

Recommended Selling Price list for SKF Industrial Products

(Not to be photocopied and/or given to others without permission of the issuing authority)

• Approved by: CS • Issued by: GH

• RSP 2025 Edition No 1, Effective from 4th December 2025

Product Designation	RSP (INR)		Product Designation	RSP (INR)	
6314-2RS1/C3	12,113	#	6319/C3	21,342	#
6314-2Z	10,180	#	6319/C4	23,209	#
6314-2Z/C3	10,180	#	6319-2RS1	35,216	#
6314-2Z/C3GJN	13,179		6319-2RS1/C3	35,216	#
6314-Z	8,572	#	6319-2Z	28,377	#
6314-Z/C3	8,572	#	6319-2Z/C3	28,377	#
6315	4,854	#	6319-Z	23,088	
6315 M/C3	30,062		6319-Z/C3	23,088	
6315 M/C4	30,705		6320	30,157	
6315/C3	9,668	#	6320/C3	30,157	
6315/C4	10,634	#	6320/C4	31,099	
6315-2RS1	14,726	#	6320-2RS1	34,304	
6315-2RS1/C3	14,726	#	6320-2RS1/C3	34,304	
6315-2Z	12,500	#	6320-2Z	41,631	
6315-2Z/C3	12,500	#	6320-2Z/C3	41,631	
6315-Z	10,359	#	6321	43,562	
6315-Z/C3	10,359	#	6321/C3	43,562	
6316	10,472	#	6322	48,573	
6316 M/C3	35,325		6322/C3	48,573	
6316 M/C4	44,340		6324	76,356	
6316/C3	10,472	#	6324/C3	76,356	
6316/C4	12,734	#	6326	95,391	
6316-2RS1	18,534	#	6328/C3	123,169	
6316-2RS1/C3	18,534	#	635	382	
6316-2Z	15,593	#	635-2Z	609	
6316-2Z/C3	15,593	#	638/4-2Z	1,655	
6316-Z	12,743	#	638/5-2Z	1,711	
6316-Z/C3	12,743	#	638/8-2Z	1,901	
6317	13,670	#	63800-2Z	2,135	
6317 M/C3	48,712		6403	2,714	
6317/C3	13,670	#	6403/C3	2,714	
6317/C4	14,864	#	6403-2RS1	3,455	
6317-2RS1	22,375	#	6403-2RS1/C3	3,455	
6317-2RS1/C3	22,375	#	6404	3,590	
6317-2Z	16,992	#	6404/C3	3,590	
6317-2Z/C3	16,992	#	6405	3,603	
6317-Z	15,074	#	6405/C3	3,603	
6317-Z/C3	15,074	#	6406	4,271	
6318	17,279	#	6406/C3	4,271	
6318/C3	17,279	#	6407	5,623	
6318/C4	18,791	#	6407 NR	8,435	
6318-2RS1	28,520	#	6407/C3	5,623	
6318-2RS1/C3	28,520	#	6408	7,472	
6318-2Z	22,459	#	6408/C3	7,472	
6318-2Z/C3	22,459	#	6409	8,865	
6318-Z	17,881		6409 NR	13,325	
6318-Z/C3	18,609	#	6409/C3	8,865	
6319	21,342	#	6410	10,722	
6319 M/C3	56,638		6410/C3	10,722	
6319 M/C4	60,934		6410/C4	12,111	

Note : \*\*\* Price on request - subject to availability.

**SKF India (Industrial) Limited**

Recommended Selling Price list for SKF Industrial Products

(Not to be photocopied and/or given to others without permission of the issuing authority)

• Approved by: CS • Issued by: GH

• RSP 2025 Edition No 1, Effective from 4th December 2025

Product Designation	RSP (INR)	Product Designation	RSP (INR)
6411	13,165	AXK 3047	437
6411/C3	13,165	AXK 3552	506
6412	15,237	AXK 4060	602
6412/C3	15,237	AXK 4565	611
6413	20,958	AXK 5070	712
6413/C3	20,958	AXK 5578	817
6413/C4	29,403	HK 0306 TN	404
6414	28,074	HK 0408	396
6414/C3	28,074	HK 0509	396
6414/C4	30,628	HK 0608	396
6415	40,779	HK 0609	432
6415/C3	40,779	HK 0709	408
6416	45,038	HK 0808	428
6418	74,266	HK 0810	428
BB1-4591 A	***	HK 0812.2RS	630
BB1B 420205	219	HK 0908	630
E2.6204-2Z/C3	605	HK 0910	630
E2.6207-2Z/C3	***	HK 0912	630
E2.6208-2Z/C3	***	HK 1010 E	196
E2.6209-2Z/C3	***	HK 1012	631
E2.6305-2Z/C3	***	HK 1014.2RS	631
E2.6306-2Z/C3	***	HK 1015	654
E2.6309-2Z/C3	***	HK 1210 E	327
RLS 10	6,221	HK 1212	458
RLS 10-2Z	9,887	HK 1216.2RS	703
RLS 11	6,283	HK 1312	473
RLS 12	6,533	HK 1412	487
RLS 5	4,852	HK 1512	490
RLS 5-2RS1	2,881	HK 1516	518
RLS 5-2Z	2,824	HK 1522	528
RLS 7-2RS1	8,700	HK 1612	537
RLS 8-2Z	8,241	HK 1616	540
RLS 9-2Z	9,187	HK 1616.2RS	686
RMS 10	7,038	HK 1622	703
RMS 8	4,460	HK 1712	518
W 6205-2Z	5,691	HK 1812	537
		HK 1816	578
Industrial Special Products		HK 2012	633
		HK 2016	640
6207/HC5C3	***	HK 2020	645
6309-2RS1TN9/HC5C3WT	***	HK 2020.2RS	977
		HK 2030	961
NRB-Needle Roller Bearings		HK 2210	984
		HK 2212	573
AXK 1024	296	HK 2216	612
AXK 1226	301	HK 2220	612
AXK 1528	315	HK 2512	612
AXK 1730	320	HK 2516	664
AXK 2035	358	HK 2520	729
AXK 2542	372	HK 2526	815

Note : \*\*\* Price on request - subject to availability.

**SKF India (Industrial) Limited**

Recommended Selling Price list for SKF Industrial Products

(Not to be photocopied and/or given to others without permission of the issuing authority)

• Approved by: CS • Issued by: GH

• RSP 2025 Edition No 1, Effective from 4th December 2025

Product Designation	RSP (INR)	Product Designation	RSP (INR)
HK 2816	683	NA 4901	2,491
HK 2820	743	NA 4901.2RS	3,554
HK 3012	757	NA 4902	2,657
HK 3016	759	NA 4902.2RS	3,758
HK 3020	789	NA 4903	2,909
HK 3026	820	NA 4903.2RS	3,999
HK 3512	836	NA 4904	4,312
HK 3516	879	NA 4904.2RS	4,312
HK 3520	936	NA 4905	4,768
HK 4012	984	NA 4905.2RS	4,831
HK 4016	1,049	NA 4906	4,045
HK 4020	1,123	NA 4906.2RS	5,664
HK 4516	1,206	NA 4907	4,577
HK 4520	1,292	NA 4907.2RS	5,743
HK 5020	1,469	NA 4908	5,275
HK 5025	1,588	NA 4908.2RS	6,890
HK 5520	1,588	NA 4909	5,946
KR 16 PP	5,000	NA 4909.2RS	7,150
KR 19 PP	4,869	NA 4910	6,311
KR 22 PP	4,647	NA 4910.2RS	8,165
KR 26 PP	5,896	NA 4911	7,587
KR 30 PP	7,924	NA 4912	9,720
KR 32 PP	9,541	NA 4913	11,512
KR 35 PP	10,167	NA 4914	14,596
KR 40 PP	11,249	NA 4915	15,045
KR 47 PP	16,527	NA 4916	15,599
KR 52 PP	15,717	NA 4917	20,606
KR 62 PP	11,701	NA 4918	24,488
LS 2035	537	NA 4919	26,753
LS 2542	581	NA 4920	33,043
LS 3047	691	NA 4922	37,608
LS 3552	791	NA 4924	44,983
LS 4060	843	NA 69/32	7,250
NA 22/8.2RS	3,032	NA 6901	2,967
NA 2200.2RS	4,381	NA 6902	3,244
NA 2201.2RS	4,615	NA 6903	3,543
NA 2202.2RS	5,126	NA 6904	5,337
NA 2203.2RS	5,169	NA 6905	5,848
NA 2204.2RS	5,636	NA 6906	7,128
NA 4822	32,021	NA 6907	8,473
NA 4824	32,895	NA 6908	9,716
NA 4826	39,852	NA 6909	11,056
NA 4828	42,983	NA 6910	12,854
NA 4830	60,346	NA 6911	14,515
NA 4832	67,427	NA 6912	17,551
NA 4834	79,299	NA 6913	20,238
NA 4836	98,943	NA 6914	24,488
NA 49/32	4,343	NA 6915	27,534
NA 4900	2,413	NA 6916	29,766
NA 4900.2RS	3,412	NA 6917	34,288

Note : \*\*\* Price on request - subject to availability.

**SKF India (Industrial) Limited**

Recommended Selling Price list for SKF Industrial Products

(Not to be photocopied and/or given to others without permission of the issuing authority)

• Approved by: CS • Issued by: GH

• RSP 2025 Edition No 1, Effective from 4th December 2025

Product Designation	RSP (INR)	Product Designation	RSP (INR)
NA 6919	52,221	NK 24/16	2,043
NATR 10 PP	6,601	NK 24/20	2,104
NATR 12 PP	7,632	NK 25/16	2,114
NATR 15 PP	7,952	NK 25/20	2,147
NATR 17 PP	8,760	NK 26/16	2,210
NATR 20 PP	9,587	NK 26/20	2,210
NATR 25 PP	10,193	NK 28/20	2,210
NATR 30 PP	13,046	NK 28/30	2,454
NATR 35 PP	17,788	NK 29/20 TN	2,319
NATR 40 PP	21,727	NK 29/30	3,658
NATR 5 PP	4,137	NK 30/20 TN	2,456
NATR 50 PP	29,470	NK 30/30 TN	2,518
NATR 6	2,480	NK 32/20 TN	2,578
NATR 6 PP	3,240	NK 32/30	2,683
NATR 8 PP	4,642	NK 35/20 TN	2,513
NATV 10 PP	6,832	NK 35/30 TN	2,694
NATV 12 PP	7,391	NK 37/20	2,547
NATV 15 PP	7,936	NK 38/20	2,604
NATV 17 PP	6,175	NK 40/30	3,328
NATV 20 PP	9,018	NK 42/20	2,893
NATV 25 PP	10,748	NK 42/30	3,476
NATV 30 PP	13,364	NK 45/20	4,441
NATV 40 PP	21,725	NK 47/20	3,486
NATV 5 PP	4,106	NK 47/30	4,333
NATV 6 PP	4,140	NK 5/10 TN	1,089
NATV 8 PP	4,799	NK 5/12 TN	1,089
NK 10/12 TN	1,194	NK 50/25	4,269
NK 10/16 TN	1,269	NK 50/35	5,031
NK 100/26	13,784	NK 55/25	4,503
NK 100/36	15,674	NK 55/35	5,217
NK 12/12	1,237	NK 6/10 TN	1,125
NK 12/16	1,237	NK 6/12 TN	1,125
NK 14/16	1,316	NK 60/25 TN	4,988
NK 14/20	1,510	NK 60/35	6,120
NK 15/16	1,304	NK 65/25	5,690
NK 15/20	1,582	NK 65/35	6,856
NK 16/16	1,440	NK 68/25	6,029
NK 16/20	1,625	NK 68/35	7,427
NK 17/16	1,625	NK 7/10 TN	1,159
NK 17/20	1,701	NK 7/12 TN	1,159
NK 18/16	1,651	NK 70/25	6,469
NK 18/20	1,701	NK 70/35	8,165
NK 19/16	1,555	NK 73/25	8,070
NK 19/20	1,555	NK 73/35	10,845
NK 20/16	1,582	NK 75/25	8,392
NK 20/20	1,828	NK 75/35	11,949
NK 21/16	1,828	NK 8/12 TN	1,264
NK 21/20	1,890	NK 8/16 TN	1,336
NK 22/16	1,930	NK 80/25	8,529
NK 22/20	1,990	NK 80/35	10,385

Note : \*\*\* Price on request - subject to availability.

**SKF India (Industrial) Limited**

Recommended Selling Price list for SKF Industrial Products

(Not to be photocopied and/or given to others without permission of the issuing authority)

• Approved by: CS • Issued by: GH

• RSP 2025 Edition No 1, Effective from 4th December 2025

Product Designation	RSP (INR)	Product Designation	RSP (INR)
NK 85/25	9,893	NKIS 45	8,148
NK 85/35	10,872	NKIS 50	9,328
NK 9/12 TN	1,232	NKIS 55	10,631
NK 9/16 TN	1,269	NKIS 60	13,543
NK 90/25	11,189	NKIS 65	13,598
NK 90/35	12,895	NKX 12 Z	4,745
NK 95/26	12,654	NKX 15	4,794
NK 95/36	15,834	NKX 15 Z	4,993
NKI 100/30	27,580	NKX 17	5,021
NKI 12/16	2,054	NKX 17 Z	5,552
NKI 15/16	2,140	NKX 20	5,695
NKI 15/20	2,301	NKX 20 Z	6,216
NKI 17/20	2,571	NKX 25	6,749
NKI 20/16	2,539	NKX 25 Z	6,938
NKI 20/20	2,874	NKX 30 Z	9,333
NKI 22/20	3,027	NKX 35	9,943
NKI 25/30	3,566	NKX 35 Z	10,563
NKI 32/20	3,660	NKX 40	10,458
NKI 35/30	4,940	NKX 40 Z	11,880
NKI 50/25	6,242	NKX 45	12,606
NKI 50/35	7,747	NKX 45 Z	12,869
NKI 55/35	8,684	NKX 50	13,801
NKI 60/35	10,384	NKX 50 Z	13,715
NKI 70/35	13,861	NKX 60	17,907
NKI 85/26	17,909	NKX 60 Z	18,891
NKI 9/12	1,627	NKX 70	24,054
NKI 90/26	20,908	NKX 70 Z	24,054
NKIA 5901	3,395	NUKR 35 A	8,244
NKIA 5902	3,849	NUKR 40 A	9,744
NKIA 5903	3,922	NUKR 47 A	12,059
NKIA 5904	4,357	NUKR 52 A	12,903
NKIA 5905	5,206	NUKR 62 A	16,529
NKIA 5906	5,876	NUTR 15 A	6,051
NKIA 5907	6,785	NUTR 1542 A	6,613
NKIA 5908	8,514	NUTR 17 A	6,378
NKIA 5910	11,883	NUTR 1747 A	6,995
NKIB 5901	4,224	NUTR 20 A	6,935
NKIB 5902	4,801	NUTR 2052 A	7,683
NKIB 5903	5,335	NUTR 25 A	8,261
NKIB 5904	6,115	NUTR 2562 A	9,140
NKIB 5905	6,832	NUTR 30 A	9,140
NKIB 5906	7,773	NUTR 3072 A	10,630
NKIB 5907	9,040	NUTR 35 A	9,942
NKIB 5908	10,430	NUTR 3580 A	11,753
NKIB 5909	12,685	NUTR 40 A	12,967
NKIB 5910	14,782	NUTR 4090 A	14,629
NKIS 25	15,846	NUTR 45 A	13,536
NKIS 30	6,309	NUTR 45100 A	16,725
NKIS 35	8,935	NUTR 50 A	18,065
NKIS 40	12,897	NUTR 50110 A	22,111

Note : \*\*\* Price on request - subject to availability.

**SKF India (Industrial) Limited**

Recommended Selling Price list for SKF Industrial Products

(Not to be photocopied and/or given to others without permission of the issuing authority)

• Approved by: CS • Issued by: GH

• RSP 2025 Edition No 1, Effective from 4th December 2025

Product Designation	RSP (INR)	Product Designation	RSP (INR)
Plain Bearings		GE 60 ES-2RS	9,720
GE 10 E	1,336	GE 60 ES-2RS/C3	9,720
GE 100 ES	32,998	GE 60 TXE-2LS	24,813
GE 100 ES-2RS	35,171	GE 70 ES	11,311
GE 110 ES	42,331	GE 70 ES-2RS	13,440
GE 110 ES-2RS	44,959	GE 70 TXE-2LS	25,597
GE 12 E	1,419	GE 8 E	1,355
GE 120 ES	49,687	GE 80 ES	16,087
GE 120 ES-2RS	57,097	GE 80 ES/C3	16,087
GE 120 TXA-2LS	103,912	GE 80 ES-2RS	18,989
GE 140 ES	85,195	GE 80 TXE-2LS	29,453
GE 140 ES-2RS	90,419	GE 90 ES	22,852
GE 15 ES	1,926	GE 90 ES/C3	22,852
GE 15 ES-2RS	2,535	GE 90 ES-2RS	21,706
GE 16 ES	2,210	GE 90 TXE-2LS	33,958
GE 160 ES	100,814	GEG 16 ES	3,103
GE 160 ES-2RS	150,792	GEG 20 ES	3,376
GE 160 TXA-2RS	199,174	GEG 25 ES	4,205
GE 17 ES	1,995	GEG 32 ES	6,221
GE 17 ES-2RS	2,207	GEG 40 ES	7,405
GE 180 ES	164,291	GEG 50 ES	11,027
GE 180 ES-2RS	215,157	GEG 63 ES	18,316
GE 20 ES	1,945	GEG 80 ES	30,257
GE 20 ES-2RS	2,389	GEH 20 ES-2RS	3,203
GE 20 TXE-2LS	8,786	GEH 20 ESX-2LS	4,479
GE 200 ES	194,640	GEH 25 ES-2RS	4,025
GE 200 ES-2RS	216,897	GEH 25 ESX-2LS	3,698
GE 25 ES	2,439	GEH 30 ES-2RS	4,792
GE 25 ES-2RS	3,013	GEH 30 ESX-2LS	6,500
GE 25 TXE-2LS	7,998	GEH 35 ES-2RS	5,919
GE 30 ES	2,472	GEH 35 ESX-2LS	7,319
GE 30 ES-2RS	3,199	GEH 40 ES-2RS	7,816
GE 30 TXE-2LS	7,797	GEH 40 ESX-2LS	10,597
GE 35 ES	3,177	GEH 45 ES-2RS	8,958
GE 35 ES-2RS	3,994	GEH 45 ESX-2LS	12,147
GE 35 TXE-2LS	12,074	GEH 50 ES-2RS	14,592
GE 4 E	1,569	GEH 50 ESX-2LS	19,792
GE 40 ES	3,574	GEH 60 ES-2RS	17,370
GE 40 ES-2RS	4,491	GEH 60 ESX-2LS	23,555
GE 40 TXE-2LS	12,174	GEH 70 ES-2RS	26,192
GE 45 ES	4,821	GEH 70 ESX-2LS	35,523
GE 45 ES-2RS	5,482	GEH 80 ES-2RS	37,739
GE 45 TXE-2LS	14,532	GEH 80 ESX-2LS	34,624
GE 5 E	2,251	GEH 90 ES-2RS	46,865
GE 50 ES	5,519	GEM 20 ES-2RS	4,740
GE 50 ES-2RS	6,319	GEM 25 ES-2RS	4,862
GE 50 TXE-2LS	17,475	GEM 30 ES-2RS	5,138
GE 6 E	1,383	GEM 35 ES-2RS	6,128
GE 60 ES	8,110	GEM 40 ES-2RS	7,152
		GEM 45 ES-2RS	8,218

Note : \*\*\* Price on request - subject to availability.

**SKF India (Industrial) Limited**

Recommended Selling Price list for SKF Industrial Products

(Not to be photocopied and/or given to others without permission of the issuing authority)

• Approved by: CS • Issued by: GH

• RSP 2025 Edition No 1, Effective from 4th December 2025

Product Designation	RSP (INR)	Product Designation	RSP (INR)
GEM 50 ES-2RS	9,974	SA 6 E	3,253
GEM 60 ES-2RS	14,126	SA 8 C	3,696
GEM 70 ES-2RS	21,123	SA 8 E	3,068
GEM 80 ES-2RS	31,701	SAKAC 10 M	3,791
GEZ 012 ES	2,544	SAKAC 12 M	4,654
GEZ 012 ES-2RS	3,584	SAKAC 14 M	6,216
GEZ 014 ES	2,718	SAKAC 16 M	7,179
GEZ 100 ES	3,024	SAKAC 18 M	8,585
GEZ 100 ES-2RS	4,133	SAKAC 20 M	8,774
GEZ 104 ES	4,142	SAKAC 22 M	13,063
GEZ 104 ES-2RS	5,489	SAKAC 25 M	13,648
GEZ 106 ES	4,890	SAKAC 30 M	18,172
GEZ 106 ES-2RS	6,366	SAKAC 5 M	4,816
GEZ 108 ES	5,409	SAKAC 6 M	2,929
GEZ 108 ES-2RS	6,987	SAKAC 8 M	3,065
GEZ 112 ES	5,530	SAKB 10 F	3,652
GEZ 112 ES-2RS	9,023	SAKB 12 F	3,984
GEZ 200 ES	7,293	SAKB 14 F	8,273
GEZ 200 ES-2RS	13,096	SAKB 16 F	8,314
GEZ 204 ES	9,692	SAKB 18 F	19,488
GEZ 204 ES-2RS	14,864	SAKB 20 F	8,628
GEZ 208 ES	15,208	SAKB 5 F	2,501
GEZ 208 ES-2RS	18,237	SAKB 6 F	2,537
GEZ 212 ES-2RS	12,575	SAKB 8 F	2,814
GEZ 308 ES	51,579	SI 10 E	3,658
GX 17 F	10,145	SI 12 E	4,156
GX 20 F	10,793	SI 15 ES	4,969
GX 25 F	11,619	SI 17 ES	5,248
GX 30 F	12,298	SI 20 ES	6,557
GX 35 F	22,002	SI 25 ES	8,934
GX 40 F	28,791	SI 30 ES	13,242
GX 45 F	33,492	SI 6 E	3,191
GX 50 F	46,488	SI 8 E	3,395
GX 60 F	68,563	SIKAC 10 M	3,228
SA 10 C	3,535	SIKAC 12 M	4,580
SA 10 E	3,535	SIKAC 14 M	6,557
SA 12 C	4,799	SIKAC 16 M	7,769
SA 12 E	3,968	SIKAC 18 M	8,542
SA 15 C	4,721	SIKAC 20 M	10,337
SA 15 ES	4,314	SIKAC 22 M	14,302
SA 17 C	6,077	SIKAC 25 M	15,014
SA 17 ES	5,638	SIKAC 30 M	20,241
SA 20 C	7,358	SIKAC 5 M	5,017
SA 20 ES	6,753	SIKAC 6 M	2,857
SA 25 C	10,459	SIKAC 8 M	3,268
SA 25 ES	9,252	SIKB 10 F	3,855
SA 30 C	12,914	SIKB 12 F	3,882
SA 30 ES	12,866	SIKB 14 F	5,046
SA 30 ES-2RS	15,967	SIKB 16 F	6,612
SA 6 C	3,253	SIKB 18 F	8,652

Note : \*\*\* Price on request - subject to availability.

**SKF India (Industrial) Limited**

Recommended Selling Price list for SKF Industrial Products

(Not to be photocopied and/or given to others without permission of the issuing authority)

• Approved by: CS • Issued by: GH

• RSP 2025 Edition No 1, Effective from 4th December 2025

Product Designation	RSP (INR)	Product Designation	RSP (INR)
SIKB 20 F	9,338	1206 EKTN9	2,539
SIKB 22 F	17,379	1206 EKTN9/C3	2,539
SIKB 5 F	2,647	1206 EM	15,790
SIKB 6 F	2,805	1206 ETN9	2,613
SIKB 8 F	3,074	1206 ETN9/C3	2,613
SILKAC 10 M	3,335	1207 EKTN9	2,860
SILKAC 12 M	5,024	1207 EKTN9/C3	2,860
SILKAC 14 M	5,943	1207 ETN9	2,860
SILKAC 16 M	8,521	1207 ETN9/C3	2,860
SILKAC 18 M	9,109	1208 EKTN9	3,320
SILKAC 20 M	10,661	1208 EKTN9/C3	3,320
SILKAC 25 M	15,951	1208 ETN9	3,425
SILKAC 30 M	20,874	1208 ETN9/C3	3,425
SILKAC 5 M	2,979	1209 EKTN9	3,562
SILKAC 6 M	3,134	1209 EKTN9/C3	3,562
SILKAC 8 M	3,268	1209 ETN9	3,562
SIR 20 ES	10,267	1209 ETN9/C3	3,562
SIR 25 ES	11,135	1210 EKTN9	3,672
SIR 30 ES	11,868	1210 EKTN9/C3	3,672
SIR 35 ES	19,804	1210 ETN9	3,672
SIR 40 ES	20,542	1210 ETN9/C3	3,672
SIR 50 ES	30,547	1211 EKTN9	4,491
SIR 60 ES	46,641	1211 EKTN9/C3	4,491
SIR 70 ES	59,077	1211 ETN9	4,491
SIR 80 ES	79,622	1211 ETN9/C3	4,491
		1211 K	***
SABB-Self Aligning Ball Bearings		1212 EKTN9	5,014 #
		1212 EKTN9/C3	5,014 #
108 Tn9	2,159	1212 ETN9	4,828 #
108 TN9/C3	2,159	1212 ETN9/C3	4,828 #
11204 Tn9	6,448	1213 EKTN9	5,829 #
11205 Tn9	6,770	1213 EKTN9/C3	5,829 #
11206 Tn9	9,561	1213 ETN9	5,829 #
11207 Tn9	9,592	1213 ETN9/C3	5,829 #
11209 Tn9	12,331	1214 ETN9	8,304 #
11212 Tn9	18,507	1215	8,763 #
11505 ETN9	***	1215 K	8,763 #
1200 ETN9	2,176	1215 K/C3	8,763 #
1201 ETN9	2,200	1215/C3	8,763 #
1202 ETN9	2,215	1216	10,246 #
1202 ETN9/C3	2,215	1216 K	10,246 #
1203 ETN9	2,358	1216 K/C3	10,246 #
1203 ETN9/C3	2,358	1216/C3	10,246 #
1204 ETN9	2,368	1217	14,415
1204 ETN9/C3	2,368	1217 K	14,415
1205 EKTN9	2,394	1217 K/C3	14,415
1205 EKTN9/C3	2,394	1217/C3	14,415
1205 EM	***	1218	15,282
1205 ETN9	2,466	1218 K	15,282
1205 ETN9/C3	2,466	1218 K/C3	15,282

Note : \*\*\* Price on request - subject to availability.

**SKF India (Industrial) Limited**

Recommended Selling Price list for SKF Industrial Products

(Not to be photocopied and/or given to others without permission of the issuing authority)

• Approved by: CS • Issued by: GH

• RSP 2025 Edition No 1, Effective from 4th December 2025

Product Designation	RSP (INR)		Product Designation	RSP (INR)	
1218/C3	15,282		1310 ETN9/C3	6,226	#
1218/C5	***		1311 EKTN9	7,153	#
1219	22,069		1311 EKTN9/C3	7,153	#
1219 K	22,069		1311 ETN9	7,153	#
1219 K/C3	22,069		1311 ETN9/C3	7,153	#
1220	25,031		1312 EKTN9	11,493	#
1220 K	25,031		1312 EKTN9/C3	11,493	#
1220 K/C3	25,031		1312 ETN9	11,493	#
1220/C3	25,031		1312 ETN9/C3	11,493	#
1222	31,213		1313 EKTN9	14,673	#
1222 K	31,213		1313 EKTN9/C3	14,673	#
1222 K/C3	31,213		1313 ETN9	14,673	#
1224 KM	***		1313 ETN9/C3	14,673	#
1224 M	***		1314	19,654	
126 Tn9	2,122		1314/C3	19,654	
126 TN9/C3	2,122		1315	22,627	
127 Tn9	2,176		1315 K	22,627	
129 Tn9	2,454		1315 K/C3	22,627	
129 TN9/C3	2,454		1315/C3	22,627	
1301 ETN9	2,943		1316	25,666	
1302 ETN9	2,972		1316 K	25,666	
1302 ETN9/C3	2,972		1316 K/C3	25,666	
1303 ETN9	2,595		1316/C3	25,666	
1304 ETN9	2,995		1317	33,784	
1304 ETN9/C3	2,995		1317 K	33,784	
1305 EKTN9	3,015		1317 K/C3	33,784	
1305 EKTN9/C3	3,015		1318	34,789	
1305 ETN9	3,015		1318 K	34,789	
1305 ETN9/C3	3,015		1318 K/C3	34,789	
1306 EKTN9	3,961		1319	55,379	
1306 EKTN9/C3	3,961		1319 K	51,277	
1306 ETN9	3,961		1320	55,035	
1306 ETN9/C3	3,961		1320 K	55,035	
1306 K/236725	***		1320 K/C3	55,035	
1307 EKTN9	4,462		135 Tn9	2,191	
1307 EKTN9/C3	4,462		1412 M/C3	***	
1307 ETN9	4,462		2200 E-2RS1TN9	3,399	
1307 ETN9/C3	4,462		2200 ETN9	2,516	
1308 EKTN9	5,112		2200 ETN9/C3	2,516	
1308 EKTN9/C3	5,112		2201 E-2RS1TN9	3,583	
1308 EM	23,124		2201 ETN9	2,578	
1308 ETN9	5,112		2202 E-2RS1TN9	3,676	
1308 ETN9/C3	5,112		2202 E-2RS1TN9/C3	3,676	
1309 EKTN9	5,416		2202 ETN9	2,638	
1309 EKTN9/C3	5,416		2202 ETN9/C3	2,638	
1309 ETN9	5,416		2203 E-2RS1TN9	3,765	
1309 ETN9/C3	5,416		2203 E-2RS1TN9/C3	3,765	
1310 EKTN9	6,226	#	2203 ETN9	2,702	
1310 EKTN9/C3	6,226	#	2203 ETN9/C3	2,702	
1310 ETN9	6,226	#	2204 E-2RS1TN9	3,863	

Note : \*\*\* Price on request - subject to availability.

**SKF India (Industrial) Limited**

Recommended Selling Price list for SKF Industrial Products

(Not to be photocopied and/or given to others without permission of the issuing authority)

• Approved by: CS • Issued by: GH

• RSP 2025 Edition No 1, Effective from 4th December 2025

Product Designation	RSP (INR)	Product Designation	RSP (INR)
2204 E-2RS1TN9/C3	3,863	2210 ETN9	5,005
2204 ETN9	2,773	2210 ETN9/C3	5,005
2204 ETN9/C3	2,773	2211 E-2RS1KTN9	6,072
2205 E-2RS1KTN9	3,911	2211 E-2RS1KTN9/C3	***
2205 E-2RS1KTN9/C3	3,911	2211 E-2RS1TN9	6,072
2205 E-2RS1TN9	3,911	2211 EKTN9	5,936
2205 E-2RS1TN9/C3	3,911	2211 EKTN9/C3	5,936
2205 E-2RS1TN9/C4VT484F7	***	2211 ETN9	5,936
2205 EKTN9	2,810	2211 ETN9/C3	5,936
2205 EKTN9/C3	2,810	2212 E-2RS1TN9	11,168 #
2205 ETN9	2,810	2212 EKTN9	6,570 #
2205 ETN9/C3	2,810	2212 EKTN9/C3	6,570 #
2206 E-2RS1KTN9	4,666	2212 ETN9	6,570 #
2206 E-2RS1KTN9/C3	4,666	2212 ETN9/C3	6,570 #
2206 E-2RS1TN9	4,400	2213 E-2RS1KTN9	9,771 #
2206 E-2RS1TN9/C3	4,400	2213 E-2RS1KTN9/C3	9,771 #
2206 E-2RS1TN9/C4	***	2213 E-2RS1TN9	9,771 #
2206 EKTN9	3,158	2213 E-2RS1TN9/C3	9,771 #
2206 EKTN9/C3	3,158	2213 EKTN9	8,395 #
2206 ETN9	3,158	2213 EKTN9/C3	8,395 #
2206 ETN9/C3	3,158	2213 ETN9	8,395 #
2207 E-2RS1KTN9	5,320	2213 ETN9/C3	8,395 #
2207 E-2RS1KTN9/C3	5,320	2214	9,703 #
2207 E-2RS1TN9	5,320	2214 E-2RS1TN9	17,950 #
2207 E-2RS1TN9/C3	5,320	2214/C3	9,703 #
2207 EKTN9	3,504	2215 EKTN9	11,937 #
2207 EKTN9/C3	3,504	2215 EKTN9/C3	11,937 #
2207 ETN9	3,504	2215 ETN9	12,379 #
2207 ETN9/C3	3,504	2215 ETN9/C3	12,379 #
2208 E-2RS1KTN9	6,555	2216 EKTN9	15,079 #
2208 E-2RS1KTN9/C3	6,555	2216 EKTN9/C3	15,079 #
2208 E-2RS1TN9	6,555	2216 ETN9	15,079 #
2208 E-2RS1TN9/C3	6,555	2216 ETN9/C3	15,079 #
2208 EKTN9	4,047	2217	17,976
2208 EKTN9/C3	4,047	2217 K	17,976
2208 ETN9	4,047	2217 K/C3	17,976
2208 ETN9/C3	4,047	2218	23,540
2209 E-2RS1KTN9	7,274	2218 K	23,540
2209 E-2RS1KTN9/C3	7,274	2218 K/C3	23,540
2209 E-2RS1TN9	7,274	2218/C3	23,540
2209 EKTN9	4,579	2219 KM	39,923
2209 EKTN9/C3	4,579	2219 KM/P63	***
2209 ETN9	4,579	2220	***
2209 ETN9/C3	4,579	2220 K	***
2210 E-2RS1KTN9	5,119	2220 K/C3	***
2210 E-2RS1KTN9/C3	5,119	2220 KM	62,489
2210 E-2RS1TN9	5,119	2220 KM/C3	62,489
2210 E-2RS1TN9/C3	5,119	2220 M	62,489
2210 EKTN9	5,005	2220 M/C3	62,489
2210 EKTN9/C3	5,005	2222 K	***

Note : \*\*\* Price on request - subject to availability.

**SKF India (Industrial) Limited**

Recommended Selling Price list for SKF Industrial Products

(Not to be photocopied and/or given to others without permission of the issuing authority)

• Approved by: CS • Issued by: GH

• RSP 2025 Edition No 1, Effective from 4th December 2025

Product Designation	RSP (INR)	Product Designation	RSP (INR)	
2222 K/C3	***	2310	10,920	#
2222 KM	66,435	2310 E-2RS1TN9	15,795	#
2222 KM/C3	66,435	2310 K	10,920	#
2222 M	62,408	2310 K/C3	10,920	#
2222 M/C3	62,408	2310 M	27,651	#
2302	7,811	2310 M/C3	27,651	#
2302 E-2RS1TN9	4,520	2310/C3	10,920	#
2303 E-2RS1TN9	5,038	2311	13,569	#
2304 E-2RS1TN9	5,258	2311 K	13,569	#
2304 M	***	2311 K/C3	13,569	#
2304 M/VQ335	***	2311 M/C3	28,086	#
2304 Tn9	5,084	2311/C3	13,569	#
2305 E-2RS1TN9	6,080	2312	17,840	
2305 E-2RS1TN9/C3	6,080	2312 K	17,840	
2305 E-2RS1TN9/C4VT484F7	***	2312 K/C3	17,840	
2305 ETN9	4,756	2312 M/C3	***	
2305 ETN9/C3	4,756	2312/C3	17,840	
2305 M	15,927	2313	22,142	
2305 M/VQ335	***	2313 K	22,142	
2306	5,740	2313 K/C3	22,142	
2306 E-2RS1TN9	8,206	2313/C3	22,142	
2306 K	5,910	2314	27,849	
2306 K/C3	5,910	2314 M/C3	***	
2306 M	18,708	2314/C3	27,849	
2306/C3	5,740	2315	34,593	
2307 E-2RS1TN9	9,152	2315 K	34,593	
2307 E-2RS1TN9/C3	9,152	2315 K/C3	34,593	
2307 EKTN9	6,431	2315/C3	34,593	
2307 EKTN9/C3	6,431	2316	39,175	
2307 EM	23,461	2316 K	39,175	
2307 EM/C3	***	2316 K/C3	39,175	
2307 E-RS1TN9/C3	7,042	2316 KM/C3	53,184	
2307 ETN9	6,431	2316 M/C3	***	
2307 ETN9/C3	6,431	2316/C3	39,175	
2308 E-2RS1TN9	7,573	2317 KM	***	
2308 EKTN9	7,688	2317 KM/C3	***	
2308 EKTN9/C3	7,688	2317 M	***	
2308 EM	23,552	2317 M/C3	***	
2308 EM/P6	***	2318 KM	***	
2308 ETN9	7,688	2318 KM/C3	***	
2308 ETN9/C3	7,688	2318 M/C3	***	
2308 M/VQ335	***	2320 KM/C3	***	
2309 E-2RS1TN9	13,285	2320 M	***	
2309 EKTN9	9,338	2320 M/C3	***	
2309 EKTN9/C3	9,338	BJ2-4103	***	
2309 EM	22,646			
2309 EM/C3	22,646	SRB-Spherical Roller Bearings		
2309 ETN9	9,338			
2309 ETN9/C3	9,338	21305 CC	8,521	
2309 M/VQ335	***	21305 CC/C3	8,521	

Note : \*\*\* Price on request - subject to availability.

**SKF India (Industrial) Limited**

Recommended Selling Price list for SKF Industrial Products

(Not to be photocopied and/or given to others without permission of the issuing authority)

• Approved by: CS • Issued by: GH

• RSP 2025 Edition No 1, Effective from 4th December 2025

Product Designation	RSP (INR)	Product Designation	RSP (INR)
21306 CC	9,515	21320 E	60,950
21306 CC/C3	9,515	21320 E/C3	60,950
21307 CC	10,545	21320 EK	65,826
21307 CC/C3	10,545	21320 EK/C3	65,826
21308 E	11,049	22205 E	8,127
21308 E/C3	11,049	22205 E/C3	8,127
21308 EKW	10,726	22205 EK	8,127
21308 EW	***	22205 EK/C3	8,127
21309 E	12,119	22205 K/C3W33VA9A1	***
21309 E/C3	12,119	22205 K/W33VA9A1	***
21309 EK	12,119	22205/20 E	14,063
21309 EK/C3	12,119	22205/C3W33VA9A1	***
21310 E	13,457	22205/W33VA9A1	***
21310 E/C3	13,457	22206 E	8,187
21310 EK	13,457	22206 E/C3	8,187
21310 EK/C3	13,457	22206 E/C4	***
21311 E	16,755	22206 EK	8,187
21311 E/C3	16,755	22206 EK/C3	8,187
21311 EK	16,755	22206 K/C3W33VA9A1	***
21311 EK/C3	16,755	22206 K/W33VA9A1	***
21312 E	18,208	22206/C3W33VA9A1	***
21312 E/C3	18,208	22206/W33VA9A1	***
21312 EK	18,208	22207 E	8,739
21312 EK/C3	18,208	22207 E/C3	8,739
21313 E	21,696	22207 E/C3VQ335	***
21313 E/C3	21,696	22207 EK	8,901
21313 EK	21,696	22207 EK/C3	8,901
21313 EK/C3	21,696	22207 K/C3W33VA9A1	***
21314 E	25,330	22207 K/W33VA9A1	***
21314 E/C3	25,330	22207/C4W33VA9A1	***
21314 EK	25,330	22207/W33VA9A1	***
21315 E	28,411	22208 E	9,575
21315 E/C3	28,411	22208 E/C3	9,575
21315 EK	28,411	22208 E/C4	10,055
21315 EK/C3	28,411	22208 EK	9,575
21316 E	31,218	22208 EK/C3	9,575
21316 E/C3	31,218	22208 K/C3W33VA9A1	***
21316 EK	31,218	22208 K/W33VA9A1	***
21316 EK/C3	31,218	22208/C3W33VA9A1	***
21317 E	34,108	22208/C4W33VA9A1	***
21317 E/C3	34,108	22208/W33VA9A1	***
21317 EK	34,108	22209 E	9,985
21317 EK/C3	34,108	22209 E/C3	9,985
21318 E	39,699	22209 E/C3VQ335	***
21318 E/C3	39,699	22209 E/C4	10,483
21318 EK	39,699	22209 EK	9,985
21318 EK/C3	39,699	22209 EK/C3	9,985
21319 E	51,789	22209 EK/C4	***
21319 E/C3	51,789	22209 K/C3W33VA9A1	***
21319 EK	51,789	22209 K/W33VA9A1	***

Note : \*\*\* Price on request - subject to availability.

**SKF India (Industrial) Limited**

Recommended Selling Price list for SKF Industrial Products

(Not to be photocopied and/or given to others without permission of the issuing authority)

• Approved by: CS • Issued by: GH

• RSP 2025 Edition No 1, Effective from 4th December 2025

Product Designation	RSP (INR)	Product Designation	RSP (INR)
22209/C3W33VA9A1	***	22214 K/C3W33VA9A1	***
22209/C4W33VA9A1	***	22214 K/W33VA9A1	***
22209/W33VA9A1	***	22214/C3W33VA9A1	***
22210 E	10,893	22214/C4W33VA9A1	***
22210 E/C3	10,893	22214/W33VA9A1	***
22210 E/C4	11,436	22215 E	15,747
22210 EK	10,893	22215 E/C3	15,747
22210 EK/C3	10,893	22215 E/C4	16,538
22210 K/C3W33VA9A1	***	22215 EK	15,747
22210 K/W33VA9A1	***	22215 EK/C3	15,747
22210/C3W33VA9A1	***	22215 EK/C4	***
22210/W33VA9A1	***	22215 K/C3W33VA9A1	***
22211 E	11,656	22215 K/W33VA9A1	***
22211 E/C2	***	22215/C3W33VA9A1	***
22211 E/C3	11,656	22215/C4W33VA9A1	***
22211 E/C4	***	22215/W33VA9A1	***
22211 EK	11,656	22216 E	17,919
22211 EK/C3	11,656	22216 E/C2	***
22211 EK/C4	12,240	22216 E/C3	17,919
22211 K/C3W33VA9A1	***	22216 E/C4	18,813
22211 K/W33VA9A1	***	22216 EK	17,919
22211/C3W33VA9A1	***	22216 EK/C3	17,919
22211/W33VA9A1	***	22216 EK/C4	***
22212 E	12,719	22216 K/C3W33VA9A1	***
22212 E/C2	***	22216 K/W33VA9A1	***
22212 E/C3	12,719	22216/C3W33VA9A1	***
22212 E/C4	13,356	22216/C4W33VA9A1	***
22212 EK	12,719	22216/W33VA9A1	***
22212 EK/C3	12,719	22217 E	21,431
22212 K/C3W33VA9A1	***	22217 E/C3	21,431
22212 K/W33VA9A1	***	22217 E/C4	22,503
22212/C3W33VA9A1	***	22217 EK	21,431
22212/C4W33VA9A1	***	22217 EK/C3	21,431
22212/W33VA9A1	***	22217 K/C3W33VA9A1	***
22213 E	13,359	22217 K/W33VA9A1	***
22213 E/C2	***	22217/C3W33VA9A1	***
22213 E/C3	13,359	22217/C4W33VA9A1	***
22213 E/C4	13,616	22217/W33VA9A1	***
22213 EK	13,359	22218 E	23,643
22213 EK/C3	13,359	22218 E/C3	23,643
22213 EK/C4	***	22218 E/C4	24,826
22213 K/C3W33VA9A1	***	22218 EK	23,643
22213 K/W33VA9A1	***	22218 EK/C3	23,643
22213/C3W33VA9A1	***	22218 EK/C4	***
22213/W33VA9A1	***	22218 K/C3W33VA9A1	***
22214 E	14,675	22218 K/W33VA9A1	***
22214 E/C3	14,675	22218/C3W33VA9A1	***
22214 E/C4	***	22218/C4W33VA9A1	***
22214 EK	14,675	22218/W33VA9A1	***
22214 EK/C3	14,675	22219 E	29,087

Note : \*\*\* Price on request - subject to availability.

**SKF India (Industrial) Limited**

Recommended Selling Price list for SKF Industrial Products

(Not to be photocopied and/or given to others without permission of the issuing authority)

• Approved by: CS • Issued by: GH

• RSP 2025 Edition No 1, Effective from 4th December 2025

Product Designation	RSP (INR)		Product Designation	RSP (INR)	
22219 E/C3	29,087		22232 K/W33VA9A1	***	
22219 EK	29,087		22234 CC/C3W33	102,551	#
22219 EK/C3	29,087		22234 CC/W33	102,551	#
22219 K/C3W33VA9A1	***		22234 CCK/C3W33	102,551	#
22219 K/W33VA9A1	***		22234 CCK/W33	102,551	#
22219/C3W33VA9A1	***		22236 CC/C3W33	***	#
22219/C4W33VA9A1	***		22236 CC/W33	***	#
22219/W33VA9A1	***		22236 CCK/C3W33	***	#
22220 E	30,368		22236 CCK/W33	106,618	#
22220 E/C2	***		22236 K/W33VA9A1	***	
22220 E/C3	30,368		22238 CCK/C3W33	***	#
22220 E/C4	***		22238 K/W33VA9A1	***	
22220 EK	30,368		22240 CC/C3W33	164,275	#
22220 EK/C3	30,368		22240 CC/W33	164,275	#
22220 K/C3W33VA9A1	***		22240 CCK/C3W33	***	#
22220 K/W33VA9A1	***		22240 CCK/C4W33	***	#
22220/C3W33VA9A1	***		22240 CCK/W33	164,275	#
22220/C4W33VA9A1	***		22240 K/W33VA9A1	***	
22220/W33VA9A1	***		22244 CC/C3W33	***	#
22222 E	38,585		22244 CC/W33	***	#
22222 E/C3	38,585		22244 CCK/C3W33	***	#
22222 EK	38,585		22244 CCK/W33	191,850	#
22222 EK/C3	38,585		22244 K/W33VA9A1	***	
22222 K/C3W33VA9A1	***		22308 E	11,269	
22222 K/W33VA9A1	***		22308 E/C3	11,269	
22222/C3W33VA9A1	***		22308 E/C4	***	
22222/C4W33VA9A1	***		22308 E/VA405	11,006	
22222/W33VA9A1	***		22308 EK	11,269	
22224 E	50,666		22308 EK/C3	11,269	
22224 E/C3	50,666		22309 E	13,703	
22224 E/C4	53,198		22309 E/C3	13,703	
22224 EK	50,666		22309 EK	13,703	
22224 EK/C3	50,666		22309 EK/C3	13,703	
22224 EK/C4	***		22310 E	16,079	
22224 K/C3W33VA9A1	***		22310 E/C3	16,079	
22224 K/W33VA9A1	***		22310 E/C4	16,882	
22224/C3W33VA9A1	***		22310 E/VA405	20,690	
22224/C4W33VA9A1	***		22310 EK	16,079	
22224/W33VA9A1	***		22310 EK/C3	16,079	
22226 E	62,809		22311 E	19,099	
22226 E/C3	62,809		22311 E/C3	19,099	
22226 E/C4	***		22311 E/C4	***	
22226 EK	62,809		22311 E/VA405	21,104	
22226 EK/C3	62,809		22311 EK	19,099	
22226 K/W33VA9A1	***		22311 EK/C3	19,099	
22228 CCK/C4W33	***	#	22312 E	22,283	
22228 K/C3W33VA9A1	***		22312 E/C3	22,283	
22228 K/W33VA9A1	***		22312 E/C4	***	
22230 K/W33VA9A1	***		22312 E/VA405	21,980	
22232 CCK/C4W33	***		22312 EK	22,283	

Note : \*\*\* Price on request - subject to availability.

**SKF India (Industrial) Limited**

Recommended Selling Price list for SKF Industrial Products

(Not to be photocopied and/or given to others without permission of the issuing authority)

• Approved by: CS • Issued by: GH

• RSP 2025 Edition No 1, Effective from 4th December 2025

Product Designation	RSP (INR)	Product Designation	RSP (INR)
22312 EK/C3	22,283	22320 EJA/VA405	***
22312 EK/VA405	***	22320 EK	69,232
22313 E	23,497	22320 EK/C3	69,232
22313 E/C2	***	22320 EK/C4	***
22313 E/C3	23,497	22320 EKJA/VA405	***
22313 E/VA405	22,947	22322 E	85,042
22313 EK	23,497	22322 E/C3	85,042
22313 EK/C3	23,497	22322 EJA/VA405	***
22314 E	26,400	22322 EK	85,042
22314 E/C3	26,400	22322 EK/C3	85,042
22314 E/C4	27,721	22322 EK/C4	***
22314 E/VA405	26,614	22322 EKJA/VA405	***
22314 EK	26,400	22324 CC/C3W33	104,167
22314 EK/C3	26,400	22324 CC/C4W33	***
22314 EK/VA405	26,614	22324 CC/W33	104,167
22315 E	31,650	22324 CCJA/W33VA405	***
22315 E/C3	31,650	22324 CCK/C3W33	104,167
22315 E/C4	***	22324 CCK/W33	104,167
22315 EJA/VA405	29,090	22324 CCKJA/W33VA405	***
22315 EK	31,650	22328 CCKJA/W33VA405	***
22315 EK/C3	31,650	22330 CC/C3W33	125,386 #
22315 EKJA/VA405	***	22330 CC/W33	125,386 #
22316 E	37,995	22330 CCJA/W33VA405	147,510 #
22316 E/C3	37,995	22330 CCK/C3W33	*** #
22316 EJA/VA405	***	22330 CCK/W33	125,386 #
22316 EK	37,995	22332 CC/C3W33	276,383
22316 EK/C3	37,995	22332 CC/W33	142,380
22316 EKJA/VA405	***	22332 CCK/C3W33	268,009
22317 E	44,130	22332 CCK/W33	268,009
22317 E/C3	44,130	22334 CC/W33	*** #
22317 E/C4	***	22334 CCK/W33	*** #
22317 EJA/VA405	50,296	22338 CCK/W33	*** #
22317 EK	44,130	230/630 CA/W33	***
22317 EK/C3	44,130	230/750 CA/W33	***
22318 E	44,794	23022 CC/C3W33	38,607
22318 E/C3	44,794	23022 CC/W33	38,607
22318 E/C4	***	23022 CCK/C3W33	41,696
22318 EJA/VA405	41,110	23022 CCK/W33	38,607
22318 EK	44,794	23022-2RS/VT143	39,338
22318 EK/C3	44,794	23024 CC/C3W33	39,541
22318 EK/C4	***	23024 CC/C4W33	***
22318 EKJA/VA405	***	23024 CC/W33	39,541
22319 E	62,770	23024 CCK/C3W33	41,799
22319 E/C3	62,770	23024 CCK/W33	41,799
22319 EK	62,770	23024-2RS5/VT143	41,122
22319 EK/C3	62,770	23024-2RS5W/C4GEM9	***
22320 E	69,232	23026 CC/C3W33	55,510
22320 E/C3	69,232	23026 CC/C4W33	***
22320 E/C4	***	23026 CC/W33	55,510
22320 EJA/C4PVA407	***	23026 CCK/C3W33	55,510

Note : \*\*\* Price on request - subject to availability.

**SKF India (Industrial) Limited**

Recommended Selling Price list for SKF Industrial Products

(Not to be photocopied and/or given to others without permission of the issuing authority)

• Approved by: CS • Issued by: GH

• RSP 2025 Edition No 1, Effective from 4th December 2025

Product Designation	RSP (INR)		Product Designation	RSP (INR)	
23026 CCK/W33	55,510		23122 CC/C3W33	53,411	
23028 CC/C4W33	***		23122 CC/W33	53,411	
23030 CC/C3W33	73,803		23122 CCK/C3W33	53,411	
23030 CCK/C3W33	73,803		23122 CCK/W33	53,411	
23030 CCK/W33	73,803		23124 CC/C3W33	59,681	
23032 CC/C2W33	***		23124 CC/W33	59,681	
23034 CC/C3W33	102,460		23124 CCK/C3W33	59,681	
23034 CCK/C3W33	102,460		23124 CCK/W33	59,681	
23034 CCK/C4W33	***		23126 CC/C3W33	73,996	
23036 CC/C3W33	114,681		23126 CC/W33	73,996	
23036 CCK/C4W33	***		23126 CCK/C3W33	73,996	
23038 CC/C3W33	91,716	#	23126 CCK/W33	73,996	
23038 CC/W33	91,716	#	23128 CC/C3W33	86,162	
23038 CCK/C3W33	***	#	23128 CC/W33	86,162	
23038 CCK/C5W33	***	#	23128 CCK/C3W33	86,162	
23038 CCK/W33	***	#	23128 CCK/W33	***	#
23040 CC/C3W33	***	#	23130 CC/C3W33	99,450	
23040 CC/C5W33	***		23130 CC/C4W33	***	
23040 CC/W33	***	#	23130 CC/W33	99,450	
23040 CCK/C3W33	***	#	23130 CCK/C3W33	99,450	
23040 CCK/C4W33	***	#	23130 CCK/W33	99,450	
23040 CCK/W33	***	#	23132 CC/C3W33	127,813	
23044 CC/C3W33	***	#	23132 CC/C4W33	***	
23044 CC/C4W33	***		23132 CC/W33	127,813	
23044 CC/W33	***	#	23132 CCK/C3W33	127,813	
23044 CCK/C3W33	***	#	23132 CCK/W33	127,813	
23044 CCK/C4W33	***	#	23136 CCK/W33	100,000	#
23044 CCK/W33	***	#	23138 CC/C3W33	207,865	
23048 CC/C3W33	***	#	23138 CC/W33	207,865	
23048 CC/W33	***	#	23138 CCK/C3W33	207,865	
23048 CCK/C3W33	***	#	23138 CCK/W33	207,865	
23048 CCK/C4W33	***	#	23140 CC/C3W33	***	#
23048 CCK/W33	***	#	23140 CC/W33	***	#
23052 CC/W33	***		23140 CCK/C3W33	173,159	#
23052 CCK/C3W33	***	#	23140 CCK/W33	***	#
23052 CCK/W33	***	#	23144 CC/C3W33	178,502	#
23056 CC/W33	***		23144 CC/W33	178,502	#
23056 CCK/W33	***	#	23144 CCK/C3W33	178,502	#
23060 CC/C3W33	***	#	23144 CCK/C4W33	***	#
23060 CC/W33	***	#	23144 CCK/W33	178,502	#
23060 CCK/C3W33	***	#	23148 CC/C3W33	205,905	#
23060 CCK/W33	***	#	23148 CC/W33	***	#
23064 CC/C3W33	***	#	23148 CCK/C3W33	***	#
23064 CC/W33	***	#	23148 CCK/C4W33	***	#
23120 CC/C3W33	36,175		23148 CCK/W33	205,905	#
23120 CC/C4W33	37,984		23152 CC/C3W33	***	#
23120 CC/W33	36,175		23152 CC/W33	***	#
23120 CCK/C3W33	36,175		23152 CCK/C3W33	***	#
23120 CCK/CNHW33	***		23152 CCK/W33	***	#
23120 CCK/W33	36,175		23156 CC/C3W33	***	#

Note : \*\*\* Price on request - subject to availability.

**SKF India (Industrial) Limited**

Recommended Selling Price list for SKF Industrial Products

(Not to be photocopied and/or given to others without permission of the issuing authority)

• Approved by: CS • Issued by: GH

• RSP 2025 Edition No 1, Effective from 4th December 2025

Product Designation	RSP (INR)		Product Designation	RSP (INR)	
23156 CC/W33	***	#	23238 CC/W33	298,633	
23156 CCK/C3W33	***	#	23238 CCK/C3W33	298,633	
23156 CCK/W33	***	#	23238 CCK/W33	298,633	
23160 CC/C3W33	***	#	23240 CC/C3W33	373,766	
23160 CC/W33	***	#	23240 CC/W33	373,766	
23218 CC/C3W33	39,228		23240 CCK/C3W33	373,766	
23218 CC/C4W33	41,191		23240 CCK/W33	373,766	
23218 CC/W33	39,228		23244 CC/C3W33	***	#
23218 CCK/C3W33	39,228		23244 CC/C4W33	***	
23218 CCK/W33	39,228		23244 CC/W33	***	#
23220 CC/C3W33	47,883		23244 CCK/C3W33	***	#
23220 CC/W33	47,883		23244 CCK/W33	***	#
23220 CCK/C2LW33VG004	***		23936 CC/C3W33	138,453	
23220 CCK/C3W33	47,883		23936 CC/W33	138,453	
23220 CCK/W33	47,883		23936 CCK/C3W33	138,453	
23220-2RS/VT143	49,799		23936 CCK/W33	138,453	
23222 CC/C3W33	64,662		23938 CC/C3W33	150,302	
23222 CC/W33	64,662		23938 CC/W33	150,302	
23222 CCK/C3W33	64,662		23938 CCK/C3W33	150,302	
23222 CCK/W33	64,662		23938 CCK/W33	150,302	
23224 CC/C3W33	79,048		23940 CC/C3W33	173,680	
23224 CC/W33	79,048		23940 CC/W33	173,680	
23224 CCK/C3W33	79,048		23940 CCK/C3W33	110,962	
23224 CCK/W33	79,048		23940 CCK/W33	110,962	
23226 CC/C3W33	85,305		23944 CC/C3W33	182,351	
23226 CC/W33	85,305		23944 CC/W33	182,351	
23226 CCK/C3W33	85,305		23944 CCK/C3W33	187,416	
23226 CCK/W33	85,305		23944 CCK/W33	187,416	
23228 CC/C3W33	107,472		23988 CC/W33	***	
23228 CC/C4W33	***		240/630 ECJ/C2HW33	***	
23228 CC/W33	107,472		24015 CC/C3W33	39,352	
23228 CCK/C3W33	107,472		24015 CC/C4S3W33	***	
23228 CCK/W33	107,472		24015 CC/W33	39,352	
23230 CC/C3W33	140,201		24015-2RS5/C3GEM9	***	
23230 CC/W33	140,201		24020 CC/C3W33	54,677	
23230 CCK/C3W33	140,201		24020 CC/W33	54,677	
23230 CCK/W33	140,201		24022 CC/C3W33	60,314	
23232 CC/C3W33	178,433		24022 CC/C4W33	***	
23232 CC/W33	178,433		24022 CC/W33	60,314	
23232 CCK/C3W33	178,433		24022/C3W33VA9B1	***	
23232 CCK/W33	178,433		24022/C4W33VA9B1	***	
23234 CC/C3W33	241,908		24024 CC/C3W33	71,406	
23234 CC/W33	241,908		24024 CC/C4W33	74,977	
23234 CCK/C3W33	241,908		24024 CC/W33	71,406	
23234 CCK/W33	241,908		24024 CCK30/C3W33	71,406	
23236 CC/C3W33	276,321		24024 CCK30/W33	71,406	
23236 CC/W33	276,321		24026 CC/C3W33	88,699	
23236 CCK/C3W33	276,321		24026 CC/W33	88,699	
23236 CCK/W33	276,321		24026 CCK30/C3W33	88,699	
23238 CC/C3W33	298,633		24026 CCK30/W33	88,699	

Note : \*\*\* Price on request - subject to availability.

**SKF India (Industrial) Limited**

Recommended Selling Price list for SKF Industrial Products

(Not to be photocopied and/or given to others without permission of the issuing authority)

• Approved by: CS • Issued by: GH

• RSP 2025 Edition No 1, Effective from 4th December 2025

Product Designation	RSP (INR)		Product Designation	RSP (INR)
24028 CC/C3W33	104,554		24128 CC/C3W33	141,534
24028 CC/W33	104,554		24128 CC/W33	141,534
24028 CCK30/C3W33	104,554		24128 CCK30/C3W33	141,534
24028 CCK30/W33	104,554		24128 CCK30/W33	141,534
24030 CC/C4W33	***		24128-2CS5/VT143	179,277
24030 CCK30/W33	64,684		24130 CC/C3W33	158,221
24030-2CS5/VT143	123,921		24130 CC/W33	158,221
24032 CC/C3W33	68,153		24130 CCK30/C3W33	158,221
24032 CC/C4W33	***		24130 CCK30/W33	158,221
24032 CCK30/C3W33	68,153		24132 CC/C3W33	201,792
24032 CCK30/C4W33	***		24132 CC/W33	201,792
24032 CCK30/W33	68,153		24132 CCK30/C3W33	201,792
24034 CC/C3W33	150,347		24132 CCK30/W33	201,792
24034 CC/W33	150,347		24134 CC/C3W33	220,279
24034 CCK30/C3W33	150,347		24134 CC/W33	220,279
24034 CCK30/W33	150,347		24134 CCK30/C3W33	207,690
24036 CC/C3W33	179,465		24134 CCK30/W33	207,690
24036 CC/W33	179,465		24148 CC/C3W33	531,213
24036 CCK30/C3W33	179,465		24148 CC/W33	531,213
24036 CCK30/W33	179,465		24188 ECA/W33	***
24038 CC/C3W33	213,992		BS2-2205-2RS/VT143	***
24038 CC/W33	213,992		BS2-2206-2RS/C3VT143	***
24038 CCK30/C3W33	213,992		BS2-2206-2RS/VT143	8,211
24038 CCK30/W33	213,992		BS2-2206-2RS5/C3GEM9	***
24040 CC/C3W33	133,206	#	BS2-2206-2RS5/C4GEM9	***
24040 CC/W33	133,206	#	BS2-2207-2RS/VT143	***
24040 CCK30/C3W33	133,206	#	BS2-2208-2RS/VT143	10,375
24040 CCK30/W33	***	#	BS2-2208-2RSK/VT143	***
24044 CC/C3W33	304,313		BS2-2209-2RS/VT143	10,583
24044 CC/W33	304,313		BS2-2209-2RSK/VT143	11,834
24044 CCK30/C3W33	304,313		BS2-2210-2RS/C3VT143	***
24044 CCK30/W33	304,313		BS2-2210-2RS/VT143	***
24076 CC/W33	***		BS2-2210-2RS5/C4GEM9	***
241/500 ECA/W33	***	#	BS2-2210-2RSK/VT143	***
241/630 ECAK30/W77	***	#	BS2-2211-2RS/C3VT143	***
241/670 ECAK30/C3W33	***		BS2-2211-2RS/VT143	12,260
24120 CC/C3W33	53,514		BS2-2211-2RS/VT143C	***
24120 CC/W33	53,514		BS2-2211-2RSK/VT143	12,989
24122 CC/C3W33	77,935		BS2-2212-2RS/VT143	13,530
24122 CC/W33	77,935		BS2-2212-2RS5/C3GEM9	***
24122 CCK30/C3W33	77,935		BS2-2212-2RSK/VT143	***
24122 CCK30/W33	77,935		BS2-2213-2RS/VT143	***
24124 CC/C3W33	93,964		BS2-2213-2RSK/VT143	***
24124 CC/W33	93,964		BS2-2214-2RS/C3VT143	***
24124 CCK30/C3W33	93,964		BS2-2214-2RS/VT143	***
24124 CCK30/W33	93,964		BS2-2214-2RSK/VT143	***
24126 CC/C3W33	119,930		BS2-2215-2RS/VT143	***
24126 CC/W33	119,930		BS2-2215-2RSK/VT143	***
24126 CCK30/C3W33	119,930		BS2-2216-2RS/VT143	21,113
24126 CCK30/W33	119,930		BS2-2216-2RSK/VT143	***

Note : \*\*\* Price on request - subject to availability.

**SKF India (Industrial) Limited**

Recommended Selling Price list for SKF Industrial Products

(Not to be photocopied and/or given to others without permission of the issuing authority)

• Approved by: CS • Issued by: GH

• RSP 2025 Edition No 1, Effective from 4th December 2025

Product Designation	RSP (INR)	Product Designation	RSP (INR)
BS2-2217-2RS/VT143	***	51100	1,283
BS2-2217-2RSK/VT143	***	51101	1,326
BS2-2218-2RS/VT143	***	51102	1,345
BS2-2218-2RSK/VT143	***	51103	1,361
BS2-2220-2RS5/C3VT143	***	51104	1,404
BS2-2220-2RS5/VT143	***	51105	1,416
BS2-2220-2RS5K/VT143	***	51106	1,524
BS2-2222-2RS5/VT143	***	51107	1,624
BS2-2222-2RS5K/VT143	***	51108	1,961
BS2-2224-2RS5/VT143	***	51109	2,234
BS2-2312-2RS/VT143	***	51110	2,479
BS2-2315-2RS/VT143	***	51111	3,292
BS2-3076	***	51112	3,660
BS2B 321642 EB	***	51113	3,963
		51114	4,328
THRB/BB-Thrust Roller/Ball		51115	5,716
Bearings		51116	6,474
		51117	6,944
29248	540,366	51118	8,686
29317 E	87,586	51120	13,512
29318 E	90,178	51122	14,997
29320 E	94,619	51124	17,040
29322 E	108,723	51126	22,143
29324 E	111,998	51128	25,384
29326 E	119,660	51130 M	43,229
29328 E	148,450	51132 M	56,913
29330 E	165,041	51134 M	61,734
29332 E	190,421	51136 M	67,895
29334 E	197,391	51138 M	79,903
29336 E	248,258	51140 M	80,548
29338 E	288,993	51200	1,780
29340 E	317,619	51201	1,787
29412 E	63,243	51202	1,809
29413 E	68,726	51203	1,828
29414 E	81,172	51204	1,852
29415 E	88,917	51205	2,002
29416 E	90,503	51206	2,294
29417 E	93,270	51207	2,829
29418 E	99,801	51208	3,812
29420 E	130,409	51209	4,395
29422 E	153,971	51210	4,897
29424 E	178,182	51211	6,521
29426 E	205,425	51212	7,129
29428 E	245,287	51213	7,895
29430 E	290,214	51214	8,564
29432 E	321,905	51215	9,188
29434 E	406,544	51216	10,308
29436 E	484,713	51217	13,720
29438 E	556,324	51218	16,338
29440 E	659,888	51220	21,732

Note : \*\*\* Price on request - subject to availability.

## SKF India (Industrial) Limited

Recommended Selling Price list for SKF Industrial Products

(Not to be photocopied and/or given to others without permission of the issuing authority)

• Approved by: CS • Issued by: GH

• RSP 2025 Edition No 1, Effective from 4th December 2025

Product Designation	RSP (INR)	Product Designation	RSP (INR)
51222	27,974	53213	10,886
51305	3,246	53214	13,210
51306	3,822	53215	15,181
51307	4,487	53216	16,725
51308	5,406	53217	19,629
51309	6,567	53218	22,284
51310	8,741	53220	27,455
51311	11,139	53306	6,367
51312	13,321	53307	6,987
51313	16,269	53308	8,708
51314	20,430	53309	10,664
51315	23,229	53310	14,175
51316	26,502	53311	20,704
51317	32,823	53312	21,416
51318	35,602	53313	23,308
51320	48,313	53314	31,330
51405	6,619	53315	36,022
51406	7,083	53316	38,592
51407	9,095	53317	42,489
51408	10,743	53318	53,612
51409	13,822	53320	70,374
51410	16,901	BA 5	2,554
52202	4,346	BA 6	2,632
52204	5,170	BA 8	2,907
52205	5,215		
52206	5,869	TRB-Tapered Roller Bearings	
52207	6,799		
52208	8,077	02872/2/02820/2/Q	1,062 ^
52209	9,242	11590/11520	658 ^
52210	9,948	15123/15245/Q	715 ^
52211	12,721	1888400/Q	2,497 ^
52212	14,073	1988/1922/Q	671 ^
52213	16,570	24780/24720/Q	934 ^
52215	20,088	25572/25520/Q	1,190 ^
52216	23,334	25577/2/25523/2/Q	1,209 ^
52217	28,139	25590/2/25520/2/Q	1,313 ^
52218	33,528	25590/2/25523/2/Q	1,313 ^
52220	47,439	25877/2/25821/2/Q	1,005 ^
53201	2,769	2789/2729/Q	964 ^
53202	2,900	28580/2/28521/2/Q	1,276 ^
53203	2,982	30203	487
53204	3,087	30203 J2/Q	459 ^
53205	3,877	30204 J2/Q	492 ^
53206	4,434	30205 J2/Q	523 ^
53207	5,261	30206 J2/Q	710 ^
53208	5,800	30207 J2/Q	740 ^
53209	6,508	30208 J2/Q	1,076 ^
53210	6,930	30209 J2/Q	895 ^
53211	8,227	30210	1,404
53212	9,658	30211 J2/Q	1,639 ^

Note : \*\*\* Price on request - subject to availability.

**SKF India (Industrial) Limited**

Recommended Selling Price list for SKF Industrial Products

(Not to be photocopied and/or given to others without permission of the issuing authority)

• Approved by: CS • Issued by: GH

• RSP 2025 Edition No 1, Effective from 4th December 2025

Product Designation	RSP (INR)		Product Designation	RSP (INR)	
30212	6,613		31320 X	85,854	
30213	7,671		31322 X	120,785	
30214 J2/Q	2,163	^	31324 X	144,280	
30215	8,731		31594/2/31520/2	1,356	^
30215 J2/QCLN	2,301	^	320/32 X/Q	612	^
30216	10,509		32004 X/Q	634	^
30217	11,405		32005 X/Q	2,110	
30218	16,942		32006 X/Q	627	^
30220	22,776		32007 J2/Q	746	
30221	28,812		32007 X/Q	789	^
30222 J2	32,181		32008 X/Q	878	^
30230	112,978		32009 X/Q	1,101	
30302 J2	526		32010 X/Q	1,052	^
30302 J2/Q	516	^	32011 X	4,235	
30303	2,107		32012 X/QVB531	1,605	^
30304	2,138		32013 X/QVB533	1,705	^
30305	2,155		32014 X/Q	1,993	^
30305 C	764	^	32015 X	8,289	
30306 J2/QCLN	895	^	32016 X	8,891	
30307	3,619		32017 X	10,272	
30308 J2/Q	1,266	^	32018 X	11,624	
30309 J2/Q	1,774	^	32019 X	13,832	
30310	7,083		32020 X/Q	3,352	^
30311	8,182		32021 X	9,826	
30312 J2/Q	3,257	^	32024 X	25,953	
30313	14,018		32026 X	35,662	
30314	14,864		32028 X	45,749	
30315	19,326		32030 X	63,299	
30316	26,378		32205 BJ2/Q	634	^
30317	26,657		32206	2,000	
30318	34,828		32207 J2/Q	1,028	^
30319	47,795		32208	1,252	
30320	64,459		32209	1,264	
30322	80,874		32210 J2/Q	1,288	^
31305	3,339		32211 J2/Q	1,288	^
31306	3,970		32212 J2/Q	1,811	^
31307	4,410		32213 J2/Q	2,258	^
31308/CL7C	5,103		32214 J2/Q	2,258	^
31309 J2/QCLN	1,871	^	32215	9,389	
31309/CL7C	4,558		32216 J2/Q	3,365	^
31310/CL7C	8,777		32217 J2/Q	3,942	^
31311	10,005		32218 J2/Q	6,267	^
31312	10,181		32219	20,296	
31313/CL7C	9,749		32220	24,495	
31314	16,564		32221	33,012	
31315	24,383		32222	42,819	
31316 J1/QCL7A	30,071		32224	68,126	
31317	40,697		32226	85,327	
31318	49,715		32228	114,722	
31319	58,028		32230	148,171	

Note : \*\*\* Price on request - subject to availability.

**SKF India (Industrial) Limited**

Recommended Selling Price list for SKF Industrial Products

(Not to be photocopied and/or given to others without permission of the issuing authority)

• Approved by: CS • Issued by: GH

• RSP 2025 Edition No 1, Effective from 4th December 2025

Product Designation	RSP (INR)		Product Designation	RSP (INR)	
32303	3,213		33112/Q	2,104	^
32304	3,225		33113	7,771	
32305 J2/Q	917	^	33114	10,635	
32306	4,281		33115	11,175	
32307 J2/Q	1,489	^	33116	11,314	
32308 J2/Q	1,489	^	33117	14,949	
32309 J2/Q	1,843	^	33118	15,716	
32310	7,148		33122	41,359	
32311	10,447		33205	2,878	
32312	13,765		33206	3,731	
32313	16,194		33207	5,234	
32314	18,318		33208	5,557	
32315	27,116		33209	6,247	
32316 J2	32,876		33210	6,252	
32317 Bj2	40,915		33211	8,361	
32318	50,946		33213	9,677	
32319	71,610		33214	10,807	
32320	92,084		33215/Q	3,524	^
32321	121,938		33216	17,652	
32322	148,976		33217	22,745	
32324	154,800		33220	67,223	
32924	30,482		344/332/Q	1,022	^
32926	43,523		3585/3525/Q	1,737	^
32928	46,256		3780/3720/Q	1,971	^
32934	71,547		387/382 A/Q	1,538	^
32936	84,265		395 A/394 A/Q	1,619	^
32938	104,284		3982/3920/2/Q	2,327	^
32940	121,933		3984/2/3920/2/Q	2,140	^
33005/Q	690	^	399 A/394 A/QVB079	1,762	^
33010/Q	1,239	^	42687/42620	2,266	^
33011	6,680		462/453 X/VB535	1,831	^
33012	9,379		47487/47420 X	2,204	^
33013	9,455		482/472/Q	2,086	^
33014	10,294		535/532 A	1,927	^
33015	11,892		539/532 X	1,758	^
33016	13,707		566/563/Q	2,067	^
33017	14,300		580/572/Q	2,123	^
33018	16,902		594/592 A	4,945	
33019/Q	3,522	^	6379/K-6320/Q	4,009	^
33020	18,738		683/672/Q	3,711	^
330201/Q	2,146	^	687/672/Q	3,967	^
33021	19,039		72212/2/72487/2/Q	2,202	^
33022	23,796		HM 220149/110	15,270	
33024	31,373		HM 88649/2/610/2/QCL7C	2,998	
330356 B/Q	2,618	^	HM 89449/2/410/2/QCL7C	6,899	
330632 C/Q	3,480	^	HM 903249/2/210/2/Q	2,018	^
33108	4,985		JL 69349 A/310	4,916	
33108/U4Q	988	^	JLM 104948 AA/910 AA	7,676	
33109	4,985		JM 205149/110	3,787	
33111/QVB500	1,743	^	JM 714249/210	16,951	

Note : \*\*\* Price on request - subject to availability.

**SKF India (Industrial) Limited**

Recommended Selling Price list for SKF Industrial Products

(Not to be photocopied and/or given to others without permission of the issuing authority)

• Approved by: CS • Issued by: GH

• RSP 2025 Edition No 1, Effective from 4th December 2025

Product Designation	RSP (INR)	
JM 718149 A/110	9,905	
L 45449/410/Q	939	
LM 102949/910/Q	1,667	
LM 11749/710/Q	645	
LM 11949/910/Q	652	^
LM 29749/710/QCL7CVA607	811	^
LM 300849/811/Q	1,328	
LM 48548/510/Q	600	^
LM 501349/310/Q	862	^
LM 501349/314/Q	1,135	^
LM 503349 A/310/QCL7C	1,361	
LM 503349/310/QCL7C	1,361	
LM 603049/011	1,108	^
LM 603049/012/Q	835	^
LM 67048/010/Q	1,763	
M 12649/610/Q	718	^
M 86649/2/610/2/Q	1,131	^
M 86649/2/610/2/QVQ506	4,298	
M 88048/010/Q	1,079	^
T2ED 045	11,521	
T2EE 060	7,688	
T7FC 055/CL7C	9,916	

## TSBB-Thin Section Ball Bearings

FPXA 200	31,203
FPXA 208	32,229
FPXA 300	33,726

Note : \*\*\* Price on request - subject to availability.

**SKF India (Industrial) Limited**

Recommended Selling Price list for SKF Industrial Products

(Not to be photocopied and/or given to others without permission of the issuing authority)

• Approved by: CS • Issued by: GH

• RSP 2025 Edition No 1, Effective from 4th December 2025

Product Designation	RSP (INR)	Product Designation	RSP (INR)
7000 ACD/P4ADGA	14,825	7014 CE/P4ADGA	61,758
7000 CD/P4ADGA	14,825	7014 FE/HCDTVU177	29,369
7000 CE/P4ADGA	24,178	7014 FEG/P4BG30GMM1VU175	9,878
7001 ACD/P4ADGA	14,978	7014 FEGA/HCP4BGMM1VU175	13,524
7001 CD/P4ADGA	14,978	7014FEG/HCP4BG6GMM1VU175	13,524
7001 CE/P4ADGA	24,386	7015 ACD/P4ADGA	43,225
7002 ACD/P4ADGA	15,342	7015 CD/P4ADGA	43,225
7002 CD/P4ADGA	15,342	7015 CE/P4ADGA	87,132
7002 CE/P4ADGA	24,923	7016 ACD/P4ADGA	41,168
7003 ACD/P4ADGA	15,611	7016 ACDGATP/P4BV051	11,331
7003 CD/P4ADGA	16,435	7016 ACDGTP/P4BG117V051	11,331
7003 CE/P4ADGA	25,274	7016 CD/P4ADGA	41,168
7004 ACD/P4ADGA	16,096	7016 CDGATP/P4BV051	11,331
7004 CD/P4ADGA	16,096	7017 ACD/P4ADGA	63,831
7004 CE/P4ADGA	25,927	7017 CD/P4ADGA	63,831
7005 ACD/P4ADGA	18,050	7018 ACD/P4ADGA	62,402
7005 CD/P4ADGA	18,050	7018 ACDGATP/P4BV051	12,198
7005 CE/P4ADGA	29,250	7018 CD/P4ADGA	62,402
7006 ACD/P4ADGA	18,788	7018 CDGATP/P4BV051	12,150
7006 CD/P4ADGA	18,788	7018 CDGATP/P4BVU1703	11,693
7006 CE/P4ADGA	29,890	7019 ACD/P4ADGA	85,149
7007 ACD/P4ADGA	22,044	7019 CD/P4ADGA	85,149
7007 CD/P4ADGA	22,044	7020 ACD/P4ADGA	62,453
7007 CE/P4ADGA	30,179	7020 ACDGATP/P4BV051	16,068
7008 ACD/P4ADGA	22,587	7020 CD/P4ADGA	62,453
7008 ACEGA/HCP4E	37,799	7020 CDGATP/P4BV051	16,087
7008 CD/P4ADGA	22,587	7020 CE/P4ADGA	91,354
7008 CDGA/P4A	10,874	71900 CD/P4ADGA	14,838
7008 CE/P4ADGA	31,261	71900 CE/P4ADGA	24,360
7009 ACD/P4ADGA	23,581	71901 ACD/P4ADGA	15,041
7009 ACEGA/HCP4E	37,919	71901 CD/P4ADGA	15,041
7009 CD/P4ADGA	23,581	71901 CE/P4ADGA	24,649
7009 CE/P4ADGA	42,197	71902 CD/P4ADGA	15,387
7010 ACD/P4ADGA	23,146	71902 CE/P4ADGA	25,117
7010 CD/P4ADGA	23,146	71903 ACD/P4ADGA	15,750
7010 CE/P4ADGA	44,462	71903 CD/P4ADGA	15,750
7011 ACD/P4ADGA	25,026	71903 CE/P4ADGA	25,633
7011 CD/P4ADGA	25,026	71904 ACD/P4ADGA	15,994
7011 CE/P4ADGA	57,907	71904 CD/P4ADGA	15,994
7012 ACD/P4ADGA	26,397	71904 CE/P4ADGA	25,944
7012 CD/P4ADGA	26,397	71905 ACD/P4ADGA	16,522
7012 CE/P4ADGA	57,797	71905 CD/P4ADGA	16,522
7013 ACD/P4ADGA	27,534	71905 CE/P4ADGA	26,698
7013 CD/P4ADGA	27,534	71906 ACD/P4ADGA	18,677
7014 ACD/P4ADGA	27,687	71906 CD/P4ADGA	18,677
7014 ACDGATP/P4BVU1703	8,132	71907 ACD/P4ADGA	20,157
7014 ACEGA/HCP4BVU175	13,426	71907 CD/P4ADGA	20,157
7014 CD/P4ADGA	27,687	71907 CE/P4ADGA	32,343
7014 CDGATP/HCP4BV050	13,963	71908 ACD/P4ADGA	23,031
7014 CDGATP/P4BV050	8,285	71908 CD/P4ADGA	23,392

Note : \*\*\* Price on request - subject to availability.

**SKF India (Industrial) Limited**

Recommended Selling Price list for SKF Industrial Products

(Not to be photocopied and/or given to others without permission of the issuing authority)

• Approved by: CS • Issued by: GH

• RSP 2025 Edition No 1, Effective from 4th December 2025

Product Designation	RSP (INR)	Product Designation	RSP (INR)
71909 ACD/P4ADGA	24,696	7215 CD/P4ADGA	52,341
71909 CD/P4ADGA	24,696	7216 ACD/P4ADGA	53,415
71910 ACD/P4ADGA	24,780	7216 CD/P4ADGA	53,415
71910 CD/P4ADGA	24,780	7217 ACD/P4ADGA	93,045
71911 ACD/P4ADGA	25,649	7217 CD/P4ADGA	93,045
71911 CD/P4ADGA	25,649	7218 ACD/P4ADGA	89,412
71912 ACD/P4ADGA	26,474	7218 CD/P4ADGA	89,412
71912 CD/P4ADGA	26,474	7220 ACD/P4ADGA	105,195
71913 ACD/P4ADGA	27,893	7220 CD/P4ADGA	105,195
71913 CD/P4ADGA	27,893	BSD 2047 CGA/VU1703	1,624
71914 ACD/P4ADGA	29,882	BSD 2047 CGA-2RS1/VU1703	1,906
71914 CD/P4ADGA	29,882	BSD 2047 CGA-2RST/VU205	1,694
71916 ACD/P4ADGA	31,218	BSD 2047 CGB	4,448
71916 CD/P4ADGA	31,218	BSD 2562 CGA/VU1703	1,828
71917 CD/P4ADGA	70,935	BSD 2562 CGA-2RS1/VU1703	1,976
71918 ACD/P4ADGA	72,152	BSD 2562 CGA-2RST/VU205	1,847
71918 CD/P4ADGA	72,152	BSD 2562 CGB	4,919
71919 ACD/P4ADGA	73,888	BSD 3062 CGA	4,689
71919 CD/P4ADGA	73,888	BSD 3062 CGA/VU1703	1,749
71920 ACD/P4ADGA	77,574	BSD 3062 CGA/VU205	1,649
71920 CD/P4ADGA	77,574	BSD 3062 CGA-2RS1/VU1703	1,899
7200 CD/P4ADGA	15,735	BSD 3062 CGA-2RST/VU205	1,761
7201 ACD/P4ADGA	15,365	BSD 3062 CGB	4,629
7201 CD/P4ADGA	15,365	BSD 3572 CGA	6,925
7202 ACD/P4ADGA	15,487	BSD 3572 CGA/VU1703	2,461
7202 CD/P4ADGA	15,487	BSD 3572 CGA-2RS1/VU1703	2,628
7203 CD/P4ADGA	15,728	BSD 3572 CGA-2RST/VU205	2,570
7204 ACD/P4ADGA	17,898	BSD 3572 CGB	6,925
7204 CD/P4ADGA	17,898	BSD 4072 CGA	8,019
7205 ACD/P4ADGA	18,700	BSD 4072 CGA/VU1703	2,788
7205 CD/P4ADGA	18,700	BSD 4072 CGA-2RS1/VU1703	2,957
7206 ACD/P4ADGA	19,042	BSD 4072 CGA-2RST/VU205	2,886
7206 CD/P4ADGA	19,042	BSD 4072 CGB	8,019
7207 ACD/P4ADGA	23,762	BSD 4090 CGA	9,842
7207 CD/P4ADGA	23,762	BSD 4090 CGA/S00VU1703	5,504
7208 ACD/P4ADGA	24,637	BSD 4090 CGB	9,842
7208 CD/P4ADGA	24,637	BSD 45100 CGA	19,111
7209 ACD/P4ADGA	26,182	BSD 4575 CGB	32,642
7209 CD/P4ADGA	26,182	BSD 50100 CGA	19,696
7210 ACD/P4ADGA	26,474	BSD 50100 CGA/S00VU1703	6,565
7210 CD/P4ADGA	26,474	BSD 50100 CGA-2RST/VU205	11,364
7211 ACD/P4ADGA	28,982	BSD 50100 CGB	12,756
7211 CD/P4ADGA	28,982	BSD 55120 CGA-2RST/VU205	12,952
7212 ACD/P4ADGA	44,335	BSD 60120 CGA/S00VU1703	8,507
7212 CD/P4ADGA	44,335	BSD 60120 CGA-2RST/VU205	15,650
7213 ACD/P4ADGA	50,408	BSD3062CGA-2RST/HN1VU205	2,614
7213 CD/P4ADGA	50,408	BTW 150 CM/SP	199,990
7214 ACD/P4ADGA	48,912	BTW 40 CTN9/SP	73,398
7214 CD/P4ADGA	48,912	BTW 45 CTN9/SP	75,408
7215 ACD/P4ADGA	52,341	BTW 50 CTN9/SP	69,460

Note : \*\*\* Price on request - subject to availability.

**SKF India (Industrial) Limited**

Recommended Selling Price list for SKF Industrial Products

(Not to be photocopied and/or given to others without permission of the issuing authority)

• Approved by: CS • Issued by: GH

• RSP 2025 Edition No 1, Effective from 4th December 2025

Product Designation	RSP (INR)	Product Designation	RSP (INR)
BTW 55 CTN9/SP	74,657	S7007 ACDGA/P4A	12,470
BTW 60 CTN9/SP	77,271	S7007 CD/P4ADGA	25,797
N 1017 KTN9/SP	40,822	S7007 CDGA/P4A	12,470
N 1018 KTN9/SP	40,675	S7007 FBGB/HCP4E	9,534
N 1019 KTN9/SP	44,039	S7008 ACDGA/P4A	12,814
N 1020 KTN9/SP	44,662	S7008 CDGA/P4A	12,814
NN 3005 K/SP	30,996	S7008 FBGB/HCP4E	38,210
NN 3006 KTN/SP	21,658	S7008 FBGB/P4E	37,405
NN 3007 K/SP	35,164	S7009 CDGA/P4A	13,980
NN 3008 KTN/SP	24,250	S7009 FBGB/HCP4E	38,659
NN 3009 KTN/SP	24,517	S7009 FBGB/HCP5VU1703	38,681
NN 3010 KTN/SP	26,285	S7009 FBGB/P5VU1703	37,757
NN 3010 KTN/SPW33	26,904	S7010 ACDGA/P4A	13,234
NN 3010 KTN/UPW33	27,682	S7010 CDGA/P4A	13,234
NN 3011 KTN/SP	23,428	S7011 ACDGA/P4A	14,649
NN 3011 KTN/SPW33	27,185	S7011 CDGA/P4A	14,649
NN 3012 KTN/SP	25,917	S7012 ACDGA/P4A	15,518
NN 3013 KTN/SP	26,462	S7012 CDGA/P4A	15,518
NN 3013 KTN/SPW33	28,136	S7013 ACDGA/P4A	16,153
NN 3014 KTN/SP	28,101	S7013 CDGA/P4A	16,153
NN 3014 KTN/SPW33	28,973	S7014 ACDGA/P4A	16,460
NN 3015 KTN/SP	30,287	S7014 CDGA/P4A	16,460
NN 3015 KTN/SPW33	30,900	S7014FEGA/HCP4BGMM1VU175	13,911
NN 3016 KTN/SP	30,640	S7015 ACDGA/P4A	24,906
NN 3016 KTN/SPW33	31,194	S7015 CDGA/P4A	24906
NN 3017 KTN9/SP	32,931	S7016 CDGA/P4A	24384
NN 3017 TN9/SPW33	33,468	S7017 ACDGA/P4A	37563
NN 3018 KTN9/SP	31,949	S7018 ACDGA/P4A	37807
NN 3018 KTN9/SPW33	32,517	S7018 CDGA/P4A	37807
NN 3019 KTN9/SP	37,241	S7019 CDGA/P4A	51770
NN 3019 KTN9/SPW33	37,711	S7020 ACDGA/P4A	39588
NN 3020 KTN9/SP	33,134	S7020 CDGA/P4A	39588
NN 3021 KTN9/SP	45,702		
NN 3022 KTN9/SP	48,755		
NN 3022 KTN9/SPW33	49,369		
NN 3024 KTN9/SP	50,396		
NN 3024 KTN9/SPW33	51,010		
NN 3026 KTN9/SP	66,622		
NN 3026 KTN9/SPW33	67,228		
NN 3028 K/SPW33	108,578		
NN 3030 K/SPW33	122,234		
S7003 ACDGA/P4A	8,817		
S7003 FBGB/HCP4EVA9D8	42,498		
S7004 ACDGA/P4A	10,709		
S7004 CDGA/P4A	10,482		
S7005 ACDGA/P4A	11,553		
S7005 CDGA/P4A	11,553		
S7006 ACDGA/P4A	12,002		
S7006 CDGA/P4A	12,002		
S7006 FBGB/HCP4E	38,060		

Note : \*\*\* Price on request - subject to availability.





**Price list serial no.:**  
**RSP25/IM/Ed. No. 1:**

SKF Authorised Industrial Distributor



## Notes

1. The Recommended Selling Price list is effective from 4th Dec 2025 and supersedes all the previous price lists issued by us.
2. These prices are subject to change without prior notice.

## SKF India (Industrial) Limited in India

**Corporate office :** Chinchwad Gaon, Chinchwad, Pune, Maharashtra, India, 411033  
Tel: +91 (20) 6611 2231

**North :** 608-612, 6th floor, Bestech Chamber, B Block, Sushant Lok,  
Phase 1, Gurgaon - 122002  
Tel: +91 (124) 470 5000

**West :** 4th Floor, Mahatma Gandhi Memorial Building [MGM],  
Netaji Subhash Road, Charni Road, Mumbai 400002, Maharashtra, India  
Tel: +91-22-6633 7777

**Toll Free :** 1800 222 007

**Email us at :** [indiacustomercare@skf.com](mailto:indiacustomercare@skf.com)

**CIN No :** U28140PN2024PLC236396

For any queries, please reach out to us at:  
[Inside.sales@skf.com](mailto:Inside.sales@skf.com)

[skf.com](http://skf.com) | [skfindia.com](http://skfindia.com)

SKF is a registered trademark of the SKF Group.

© SKF Group 2025

The contents of this publication are the copyright of the publisher and may not be reproduced (even extracts) unless prior written permission is granted. Every care has been taken to ensure the accuracy of the information contained in this publication but no liability can be accepted for any loss or damage whether direct, indirect or consequential arising out of the use of the information contained herein.

December 2025

Certain image(s) used under license from Shutterstock.com.