



[www:// techno-flex.com](http://www.techno-flex.com)



IS-9537

 Part (II)
 CM/L- 8200152307

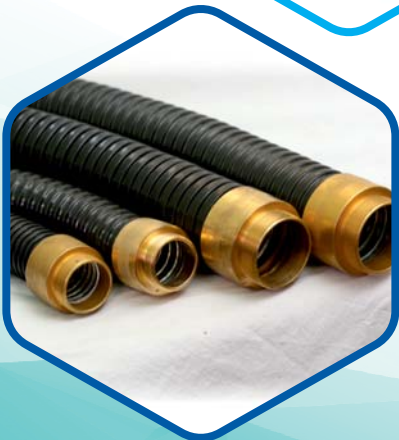




echnoflex

We Technoflex, are one of the topmost organizations of the industry engrossed in manufacturing, supplying and exporting a broad range of Metallic and Non-Metallic Conduit, since our inception in the year of 2011. In our optimum quality product range. We are offering GI Steel Flexible and GI Conduit (AS PER BS4568/BS31 CONDUIT) and accessories. These products are manufactured using superior grade basic material in full compliance with the set industry norms and standards at our ultra-modern manufacturing unit. Owing to their excellent finish, superior corrosion resistance and built in flexibility, these products are demanded by the various industries such as construction & building, rail transportation system, Shipping Companies and hazardous manufacturing units. Our products are manufactured with utmost precision under the assistance of our highly experienced professionals. We procured basic material from the trusted and reliable vendors of the industry. We have appointed a team of qualified personnel to carry out our business operations. To meet the varied demands of our clients, we are manufacturing these products in various technical specifications. Banking on our production capacity, We have been able to fulfill the bulk demands of the provided products.

To be the most efficient and innovative steel conduit manufacturer, service provider, and solution supplier.





Galvanised Steel Flexible Conduit

Construction : Helically Wound Single Lock Conduit

Self Colour : Zink/Silver

Catloge : TF-IS-GI

Features :

- 01) High Mechanical Strenght Instralations
- 02) Flexible
- 03) Temperature Range : -100° C To +300° C etc.
- 04) IP Rating : IP 40 With Standard Fittings

Note : "Double Interlock are available in all the standard"

Dimension -

| Item Code | Size | Internal Diameter (mm) | External Diameter (mm) | Min. Bend Radiuce (mm) | Coil Packing (m) |
|-----------------|------|------------------------|------------------------|------------------------|------------------|
| TF-FMC-US-1/2 | 1/2" | 16 | 19.2 | 43 | 30 |
| TF-FMC-US-3/4 | 3/4" | 20.4 | 24.8 | 50 | 30 |
| TF-FMC-US-1 | 1 | 26.6 | 30.8 | 57 | 30 |
| TF-FMC-US-1-1/4 | 1¼" | 35 | 40 | 70 | 15 |
| TF-FMC-US-1-1/2 | 1½" | 40.3 | 45.4 | 80 | 15 |
| TF-FMC-US-2 | 2" | 51.5 | 56.8 | 95 | 15 |
| TF-FMC-US-2-1/2 | 2½"" | 63.3 | 70.6 | 140 | 7.5 |
| TF-FMC-US-3 | 3" | 78.5 | 85.5 | 150 | 7.5 |
| TF-FMC-US-4 | 4" | 102 | 112 | 190 | 7.5 |

Raw Material : IS 277:2018 Pre - Galvanised Steel Sheet Z120 Gsm Which Corresponds average coating weisght of 120gsm of suface area as basic core material

Marking & Packing : Helically Wound Single Lock Conduit

Standard & Approvals : All Conduits are manufactured in accordance to IS-3480 certified : NABL INDIA



Pvc Coated Steel Flexible Conduit

Construction : Helically Wound Single Lock Conduit

Self Colour : Zink/Silver

PVC Coating : Black/Gray PVC also available LFHSUV
resistant/FRLS/Low smoke density/UV protection

Catloge : TF-BS-PVC

Features :

- 01) High Mechanical Strenght Instralations
- 02) Low Smoke Density
- 03) Temperature Range : -15° C To +90° C
- 04) IP Rating : IP54 & IP65
- 05) Inherent Low Fire Hazard Product

Note : "Double Interlock are available in all the standard"

Dimension -

| Item Code | Size | Internal Diameter (mm) | External Diameter (mm) | Min. Bend Radiuce (mm) | Coil Packing (m) |
|---------------|------|------------------------|------------------------|------------------------|------------------|
| TF-PFMC-BS-16 | 16mm | 13 | 17 | 30 | 15-20-25-30 |
| TF-PFMC-BS-20 | 20mm | 16.9 | 21.5 | 30 | 15-20-25-30 |
| TF-PFMC-BS-25 | 25mm | 21.1 | 26 | 43 | 15-20-25-30 |
| TF-PFMC-BS-32 | 32mm | 28.1 | 32 | 50 | 15-20 |
| TF-PFMC-BS-40 | 40mm | 36 | 40 | 57 | 10-15 |
| TF-PFMC-BS-50 | 50mm | 46 | 50 | 70 | 10-15 |

Raw Material

: IS 277:2018 Pre - Galvanised Steel Sheet Z120 Gsm Which Corresponds average coating weisght of 120gsm of surface area as basic core material-vargin PVC soft greanuals- IS 5831

Marking & Packing

: Helically Wound Single Lock Conduit

Standard & Approvals

: All Conduits are manufactured in accordance to IS-3480 certified : NABL INDIA. Bs-731 part 1 Assistance has been driven from the following while preparing this standard.



Liquid Tight Pvc Coated Steel Flexible Conduit

Construction : Helically Wound Single Lock Conduit

Self Colour : Zink/Silver

PVC Coating : Black/Gray PVC also available LFHSUV
resistant/FRLS/Low smoke density/UV protection

Catloge : TF-LTFMC-US

Features :

- 01) Liquid Tight PVC Coated Steel Flexible Conduit High Mechanical Strength .
- 02) Low Flexible
- 03) Temperature Range : -20° C To 105° C.
- 04) IP Rating : IP 66,IP68 & IP69
- 05) Inhernt Low Fire Hazard Product

Note : "Double Interlock are available in all the standard"

Dimension

| Item Code | Size | Internal Diameter (mm) | External Diameter (mm) | Min. Bend Radiuce (mm) | Coil Packing (m) |
|-------------------|------|------------------------|------------------------|------------------------|------------------|
| TF-LTFMC-US-1/2 | 1/2" | 16 | 21 | 75 | 30 |
| TF-LTFMC-US-3/4 | 3/4" | 20 | 26 | 85 | 30 |
| TF-LTFMC-US-11 | 1 | 26 | 33 | 110 | 30 |
| TF-LTFMC-US-1-1/4 | 1¼" | 33 | 40 | 130 | 15 |
| TF-LTFMC-US-1-1/2 | 1½" | 40 | 45 | 150 | 15 |
| TF-LTFMC-US-2 | 2" | 50 | 58 | 190 | 15 |
| TF-LTFMC-US-2-1/2 | 2½" | 63 | 73 | 250 | 7.5 |
| TF-LTFMC-US-3 | 3" | 78 | 88 | 310 | 7.5 |
| TF-LTFMC-US-4 | 4" | 102 | 114 | 360 | 7.5 |

Raw Material : IS 277:2018 Pre - Galvanised Steel Sheet Z120 Gsm Which Corresponds average coating weisght of 120gsm of suface area as basic core material-vargin PVC soft greannuals- IS 5831

Marking & Packing : Helically Wound Single Lock Conduit

Standard & Approvals : All Conduits are manufactured in accordance to IS-3480 certified : NABL INDIA.

BSEN 6186/BS 4568

GI Conduit Class 4 / Class 3

Self Colour : Zink/Silver

Catloge : TF-GI-Conduit

Description:

AS PER BS4568/BS31 Conduit

Material : Mild Steel, Hot DIP Galvanized

Finish : Pre-Galvanized , Hot Dip Galvanized (HDG)

Standard : BS4568:1970

IP Rating : IP 68

Feature:

- 1) Heavy corrosion protection by Hot-Dip Galvanizing on the exterior and medium corrosion protection by applying an organic coat on the interior surface of the conduit for Class3;
- 2) Threaded on both ends, one end fitted with coupling and the other protected by plastic end cap.
- 3) Metric size threading.

Dimension and Weight Chart

| Item Code | Size | Outer Diameter | | Thikness (mm) | Thread Length (mm) | | Weight(g/m) | |
|-----------|------|----------------|--------|---------------|--------------------|--------|-------------|---------|
| | | MIN | MAX | | MIN | MAX | MIN | MAX |
| TF-GI-20 | 20mm | 19.7mm | 20.0mm | 1.6±0.15 | 13.0mm | 15.0mm | 652g/m | 862g/m |
| TF-GI-25 | 25mm | 24.6mm | 25.0mm | 1.6±0.15 | 16.0mm | 18.0mm | 830g/m | 1095g/m |
| TF-GI-32 | 32mm | 21.6mm | 32.0mm | 1.6±0.15 | 18.0mm | 20.0mm | 1133g/m | 1432g/m |
| TF-GI-40 | 40mm | 39.5mm | 40.0mm | 1.6±0.15 | 19.0mm | 22.0mm | 1.36g/m | 1.52g/m |
| TF-GI-50 | 50mm | 49.5mm | 50.0mm | 1.6±0.15 | 19.0mm | 22.0mm | 1.71g/m | 1.91g/m |

EMT Conduit

The Electrical Metallic Tubing(emt), Sometimes Called Thin-wall, Is Commonly Used Instead Of Galvanized Rigid Conduit (grc), As It Is Less Costly And Lighter Than Grc. Emt Itself Is Not Threaded But Can Be Used With Threaded Fittings And Clamp To It. Lengths Of Conduit Are Connected To Each Other And To Equipment With Clamp-type Fittings. Like Grc, Emt Is More Common In Commercial And Industrial Buildings Than Is Residential Applications. Emt Is Generally Made Of

Product Material : Steel with uniform Zinc coating

Colour : White

Property : Made of the hight Quality steel , good corrosion resistance, suitable for the mechanical equipment it wet, harsh enviroment,

Standard : As Per UI797, Ansi C80.3

Application : Used As An Unthreaded Steel Raceway For Protection And Routing Of Electrical Wiring.

EMT(Electrical Metallic Tubing) Dimensions and Weights

| Nominal Dimension | | Outside Diameter | | Wall Thickness | | Length | | Weight |
|-------------------|-----|------------------|-------|----------------|------|--------|------|----------|
| | | Size | | Size | | | | |
| INCH | MM | INCH | MM | INCH | MM | FT | MM | Kg/Meter |
| 1/2" | 16 | 0.706 | 17.93 | 0.042 | 1.07 | 10 | 3050 | 0.439 |
| 3/4" | 21 | 0.922 | 23.42 | 0.049 | 1.24 | 10 | 3050 | 0.669 |
| 1" | 27 | 1.163 | 29.54 | 0.057 | 1.45 | 10 | 3050 | 0.99 |
| 1-1/4" | 35 | 1.51 | 38.35 | 0.065 | 1.65 | 10 | 3050 | 1.469 |
| 1-1/2" | 41 | 1.74 | 44.2 | 0.065 | 1.65 | 10 | 3050 | 1.698 |
| 2" | 53 | 2.197 | 55.8 | 0.065 | 1.65 | 10 | 3050 | 2.17 |
| 2-1/2" | 63 | 2.875 | 73.03 | 0.072 | 1.83 | 10 | 3050 | 3.177 |
| 3" | 78 | 3.5 | 88.9 | 0.072 | 1.83 | 10 | 3050 | 3.879 |
| 3-1/2" | 91 | 4 | 101.6 | 0.083 | 2.11 | 10 | 3050 | 5.17 |
| 4" | 103 | 4.5 | 114.3 | 0.083 | 2.11 | 10 | 3050 | 5.75 |

High Quality Product

C.I. CONDUIT FITTINGS



SIZE

20mm, 25mm, 32mm

Finish

Electro Glav., Hot Dipd

CIRCULAR JUNCTION BOX ONE WAY



SIZE

20mm, 25mm

Finish

Electro Glav., Hot Dipd

CIRCULAR DOOM COVER



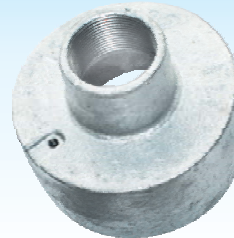
SIZE

20mm, 25mm, 32mm

Finish

Electro Glav., Hot Dipd

CIRCULAR JUNCTION BOX TWO WAY



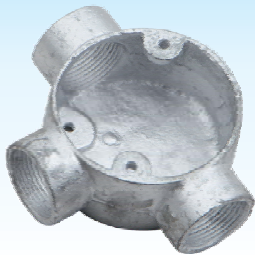
SIZE

20mm, 25mm

Finish

Electro Glav., Hot Dipd

CIRCULAR BACK OUTLET (1,2,3,4 WAY)



SIZE

20mm, 25mm, 32mm

Finish

Electro Glav., Hot Dipd

CIRCULAR JUNCTION BOX THREE WAY



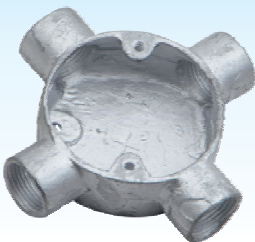
SIZE

20mm, 25mm

Finish

Electro Glav., Hot Dipd

CIRCULAR JUNCTION BOX U TYPE



SIZE

20mm, 25mm, 32mm

Finish

Electro Glav., Hot Dipd

CIRCULAR JUNCTION BOX FOUR WAY



SIZE

20mm, 25mm

Finish

Electro Glav., Hot Dipd

SIZE

20mm, 25mm

Finish

Electro Glav., Hot Dipd

CIRCULAR JUNCTION BOX H TYPE



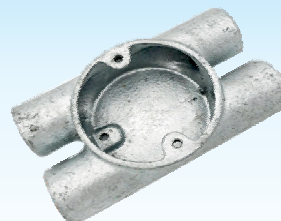
SIZE

20mm, 25mm, 32mm

Finish

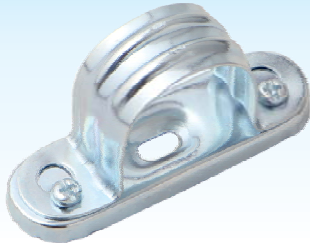
Electro Glav., Hot Dipd

CIRCULAR JUNCTION BOX ANGLE WAY



High Quality Product

G.I. CONDUIT FITTINGS



SIZE

20mm, 25mm, 32mm, 40mm, 50mm,

Finish

Electro Glav., Hot Dipd

SPACER BAR SADDLE



SIZE

20mm, 25mm, 32mm, 40mm, 50mm,

Finish

Electro Glav., Hot Dipd

NORMAL BEND



SIZE

20mm, 25mm, 32mm, 40mm, 50mm,

Finish

Electro Glav., Hot Dipd

PLAIN SADDLE



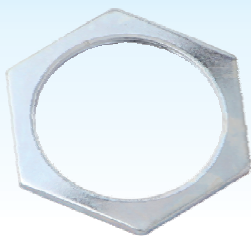
SIZE

20mm, 25mm, 32mm, 40mm, 50mm,

Finish

Electro Glav., Hot Dipd

HALF SADDLE



SIZE

20mm, 25mm, 32mm, 40mm, 50mm,

Finish

Electro Glav., Hot Dipd

HEX LOCK NUT



SIZE

20mm, 25mm, 32mm, 40mm, 50mm,

Finish

Electro Glav., Hot Dipd

G.I. COUPLER



SIZE

20mm, 25mm

Finish

Electro Glav.

G.I. DOOM COVER



SIZE

20mm, 25mm

Finish

Electro Glav

HEX END STOPPER



SIZE

1/2", 3/4", 1" All Size

Finish

Electro Glav

HEX REDUCER



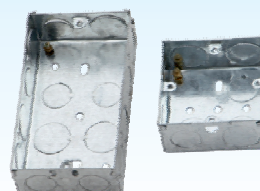
SIZE

3mmX25mm all Size

Finish

Electro Glav.

EARTHING STRIP SADDLE



SIZE

16mm, 25mm, 35mm, 47mm,
(1 GANG, 2 GANG)

Finish

Pre Glav. Sheet,

SWITCH & SOCKET BOX

High Quality Product

FLEXIBLE CONDUIT ACCESSORIES



SIZE

20mm, 25mm, 32mm,
40mm, 50mm

Finish

Brass

BRASS ADAPTOR



SIZE

1/2", 3/4", 1", 1.5", 2"

Finish

Brass

BRASS ADAPTOR

(Screw Type)



SIZE

20mm, 25mm (Long/ Short)

Finish

Brass

BRASS BUSH



SIZE

1/2", 3/4", 1", 1.5", 2"

Finish

Aluminium

ALUMINIUM ADAPTOR

High Quality Product

EMT & RIGID CONDUIT FITTINGS



SIZE

1/2" To 2 inch

Finish

Electro Glav.

EMT ONE HOLE STRAP



SIZE

1/2" To 2 inch

Finish

Electro Glav.

EMT TWO HOLE STRAP



SIZE

1/2", 3/4"

Finish

Zinc. Die Cast

SQUEEZE CONNECTOR



SIZE

1/2", 3/4"

Finish

Zinc. Die Cast

SET SCREW CONNECTOR



SIZE

1/2", 3/4"

Finish

Zinc. Die Cast

SET SCREW COUPLING



SIZE

1/2" to 3 inch

Finish

Electro Glav.

EMT & RIGID CHANNEL CLAMP

EXPORT COUNTRY NAMES :

1. United Arab Emirates
2. Saudi Arabia
3. Qatar
4. Kuwait
5. Oman
6. Bahrain
7. Jordan
8. Malaysia
9. Singapore
10. Sri Lanka
11. Egypt
12. South America
13. South Africa
14. Ireland
15. Lebanon

Our CLIENTS





CORPORATE OFFICE :

TECHNOFLEX STEEL INDIA PVT LTD
403, DUTT NAGAR, CAT SQUARE, OPPOSITE D-MART,
RAJENDRA NAGAR, INDORE, M.P. - 452012, INDIA



REGISTERED OFFICE :

TECHNOFLEX STEEL INDIA PVT LTD,
SURVEY NO.236/4, GRAM AHIRKHEDI, HAWA BUNGLOW ROAD,
NEAR CAT CIRCLE, INDORE , M.P. - 452012,



+91 9827458587, +91 8770608670



indiatechnoflex@gmail.com



indoretechno@gmail.com



www.technoflexsteelindia.com